

Converting Colors

$Yxy(42.9468, 0.3546, 0.3354)$

Have a look what the booklet for
Yxy(42.9468, 0.3546, 0.3354)
contains.

Yxy(42.8248, 0.3544, 0.3354)	3
Conversions	4
Details	6
Harmonies	12
Previews	24
Color Blindness Simulation	27
CSS Examples	30

Color

Yxy(42.8248, 0.3544, 0.3354)

Conversions

Conversions Part 1

Format	Color
Hex	CDA6A1
RGB	205, 166, 161
RGB Percent	80%, 65%, 63%
CMY	0.1960, 0.3490, 0.3686
CMYK	0.00, 0.19, 0.21, 0.20
HSL	7°, 31%, 72%
HSV	7°, 21%, 80%
XYZ	45.2508, 42.8248, 39.6072
YIQ	177.0910, 24.8490, 6.7130

Conversions

Conversions Part 2

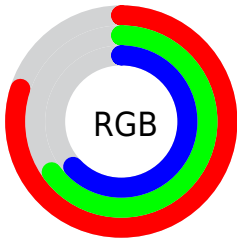
Format	Color
R_{YB}	205, 167, 161
Decimal	13477537
CIE _{Lab}	71.44, 13.54, 7.98
CIE _{LCh}	71, 15.719, 30.518
Yxy	42.8248, 0.3544, 0.3354
Android (android.graphics.Color)	4291667617 (0xFFCDA6A1)
YUV	177.0910, -7.9329, 24.4762
Hunter-Lab	65.4407, 8.9077, 9.9239

Details

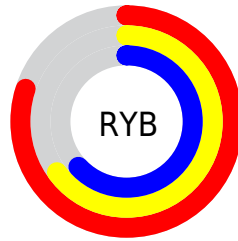
The Yxy color $42.8248, 0.3544, 0.3354$ is a light color, and the websafe version is hex `CC9999`. A complement of this color would be $53.3142, 0.2806, 0.3225$, and the grayscale version is $44.0516, 0.3127, 0.3290$.

A 20% lighter version of the original color is $77.9308, 0.3408, 0.3341$, and $19.6444, 0.3662, 0.3360$ is the 20% darker color. If you saturate the color by 10%, you get $36.0121, 0.3809, 0.3386$, and if you desaturate by 10%, it is $50.6945, 0.3327, 0.3323$.

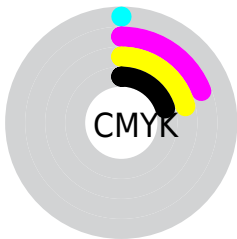
Distribution



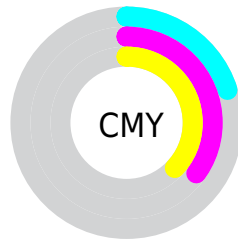
- Red (80%)
- Green (65%)
- Blue (63%)



- Red (80%)
- Yellow (65%)
- Blue (63%)



- Cyan (0%)
- Magenta (19%)
- Yellow (21%)
- Black (20%)





- Cyan (20%)
- Magenta (35%)
- Yellow (37%)

Brightness & Saturation Gradients

These gradients show how the Yxy color 42.8248, 0.3544, 0.3354 changes by changing the brightness by 10 percent. The first figure shows a shift by +10% for each color and the second figure -10%.


Similar to the brightness gradients but the following saturation gradients show a change of the Yxy color 42.8248, 0.3544, 0.3354 by changing the saturation by 10% instead.


 42.8248, 0.3544,
0.3354

 42.8248, 0.3544,
0.3354


357.8908, 0.3331,
0.3325

 29.7477, 0.3599,
0.3360


 79.4464, 0.3466,
0.3344

 19.6471, 0.3670,
0.3368


 103.7597, 0.3436,
0.3340

 12.1388, 0.3766,
0.3377


132.5871, 0.3412,
0.3337

 6.8383, 0.3902,
0.3387

166.3131, 0.3391,
0.3334

 3.3612, 0.4113,
0.3398

205.3221, 0.3373,
0.3331

 1.3231, 0.4482,
0.3406

249.9985, 0.3357,

 0.1590, 0.7519,

0.3329

0.2481

300.7265, 0.3343,
0.3327

0.0000, 0.0000,
0.0000

42.8248, 0.3544,
0.3354

42.8248, 0.3544,
0.3354

36.0121, 0.3809,
0.3386

50.6945, 0.3327,
0.3323

30.2058, 0.4130,
0.3417

59.6575, 0.3150,
0.3294

25.3598, 0.4508,
0.3444

69.7555, 0.3006,
0.3267

21.4223, 0.4934,
0.3462

81.0262, 0.2888,
0.3243

18.3363, 0.5381,
0.3465

91.7216, 0.2833,
0.3289

■ 16.0385, 0.5800,
0.3446

■ 14.4566, 0.6128,
0.3407

■ 13.6023, 0.6314,
0.3369

Harmonies

Analogous

The Analogous color harmony consists of three colors that are next to each other on the color wheel.



42.8248, 0.3400, 0.3164



42.8248, 0.3544, 0.3354



42.8248, 0.3571, 0.3535

Triad

The Triadic color harmony groups three colors that are evenly spaced from another and form a triangle on the color wheel.



42.8248, 0.3544, 0.3354



42.8248, 0.3060, 0.3597



42.8248, 0.2784, 0.2926

Complementary

The Complementary color scheme is a pair of colors which are on the opposite of each other on the color wheel.



42.8248, 0.3544, 0.3354



53.3142, 0.2806, 0.3225

Split Complementary

Split-complementary colors differ from the complementary color scheme. The scheme consists of three colors, the original color and two neighbors of the complement color.



42.8248, 0.2701, 0.3025



42.8248, 0.3544, 0.3354



42.8248, 0.2856, 0.3415

Square

The Square scheme is like the rectangle color scheme, but the four colors are evenly spaced on the color wheel.



42.8248, 0.3544, 0.3354



42.8248, 0.3286, 0.3687



42.8248, 0.2727, 0.3202



42.8248, 0.2958, 0.2923

Rectangle

The Rectangle color scheme consists of four colors that form a rectangle on the color wheel.



42.8248, 0.3544, 0.3354



42.8248, 0.3520, 0.3628



42.8248, 0.2727, 0.3202



42.8248, 0.2745, 0.2949

Sweetspot

The Sweet Spot groups the original color and five complimentary colors.



42.8268, 0.3544, 0.3354



90.6996, 0.3227, 0.3307



42.6769, 0.3190, 0.2811



19.2055, 0.3239, 0.3309



0.0000, 0.0000, 0.0000



21.4041, 0.3127, 0.3290

Same Dimension

The Same Dimension uses a secret algorithm to generate beautiful new colors.



42.8268, 0.3544, 0.3354



64.4920, 0.3667, 0.3370



51.2737, 0.3490, 0.3617



11.4146, 0.3287, 0.3317



8.5375, 0.6298, 0.3381



0.5108, 0.6026, 0.3598

Inverse Universe

The Inverse Universe completely reimagines the original color for something new.



53.3142, 0.2806, 0.3225



84.8272, 0.2738, 0.3209



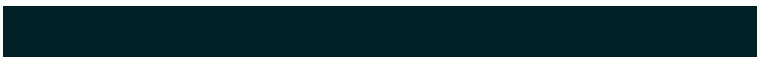
44.0749, 0.2786, 0.2940



12.5018, 0.2983, 0.3263



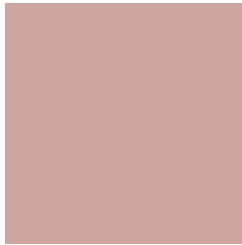
23.6101, 0.2148, 0.2933



1.2812, 0.2169, 0.3009

Previews

White Background



This preview shows how the Yxy color 42.8248, 0.3544, 0.3354 looks on a white background.

Color Contrast Check

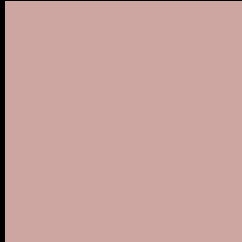
Large Text (above 18pt) WCAG AA × Fail

Any Text WCAG AA × Fail

Large Text (above 18pt) WCAG AAA × Fail

Any Text WCAG AAA × Fail

Black Background



This preview shows how the Yxy color 42.8248, 0.3544, 0.3354 looks on a black background.

Color Contrast Check

Large Text (above 18pt) WCAG AA ✓ Pass

Any Text WCAG AA ✓ Pass

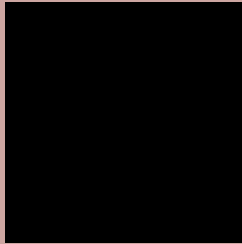
Large Text (above 18pt) WCAG AAA ✓ Pass

Any Text WCAG AAA ✓ Pass

If you want to check with other color combinations, try the [Color Contrast Checker](#).

Yxy 42.8248, 0.3544, 0.3354

Background



This preview shows how black text looks on a background with the Yxy color 42.8248, 0.3544, 0.3354.



This preview shows how white text looks on a background with the Yxy color 42.8248, 0.3544, 0.3354.

Color Blindness Simulation

Color vision deficiency is a very complex topic, and I could not describe the different causes any better than Wikipedia does, so if you want to learn more, you should check out their [article about color blindness](#).

Dichromacy



Original Color

42.8248, 0.3544, 0.3354

Protanopia

42.8490, 0.3257, 0.3398

Deuteranopia

42.9198, 0.3479, 0.3407



Tritanopia

42.9509, 0.3427, 0.3142

Trichromacy



Original Color

42.8248, 0.3544, 0.3354

Protanomaly

42.7533, 0.3363, 0.3383

Deuteranomaly

42.9608, 0.3510, 0.3393

Tritanomaly

42.9724, 0.3462, 0.3216

Monochromacy



Original Color

42.8248, 0.3544, 0.3354

Achromatopsia

43.9657, 0.3127, 0.3290

Achromatomaly

43.3922, 0.3271, 0.3317

CSS Examples

Text

The CSS property to change the color of the text to Yxy 42.8248, 0.3544, 0.3354 is called "color". The color property can be set on classes, ids or directly on the HTML element.

This example shows how text in the color `rgb(205, 166, 161)` looks like.

```
.text, #text, p{  
    color:rgb(205, 166, 161)  
}
```

If you want to add a text shadow in that color use the text-shadow property, you can generate a text shadow directly with our [CSS Text Shadow Generator](#).

Here you see how black text with a 4 pixel rgb(205, 166, 161) colored shadow looks like.

```
.shadow{ text-shadow: 4px 4px 2px rgb(205, 166, 161) }
```

Border

The CSS property to change the border of an element to Yxy 42.8248, 0.3544, 0.3354 is called "border". The border property can be set on classes, ids or directly on the HTML element.

This example shows the color as border, it can be applied via the CSS property "border" or "border-color".

```
.border, #border, table{ border:4px solid rgb(205, 166, 161) }
```

If only the border color should be changed use the property `border-color`.

```
.border{ border-color:rgb(205, 166, 161) }
```

If you want to add a box shadow in that color use:

Here you see how a box with a 4 pixel `rgb(205, 166, 161)` colored shadow looks like.

```
.boxshadow{ -moz-box-shadow:4px 4px 4px  
4px rgb(205, 166, 161); -webkit-box-  
shadow:4px 4px 4px 4px rgb(205, 166, 161);  
box-shadow:4px 4px 4px 4px rgb(205, 166,  
161) }
```


Background

The CSS property to change the background color of an element to Yxy 42.8248, 0.3544, 0.3354 is called "background". The background property can be set on classes, ids or directly on the HTML element.

```
.background, #background, body{  
background: rgb(205, 166, 161) }
```

If only the background color should be changed can be used:

```
.background{ background-color: rgb(205,  
166, 161) }
```

This example shows the color as background, it is applied via the CSS property "background".

To optimize and compress your CSS code, you can use our [online CSS compressor and optimizer](#) based on csstidy. If you want to create a linear or radial gradient as background or border, check our [CSS Gradient Generator](#).

Hey! You found this booklet interesting? Support Converting Colors with the new Membership Option!

The pro membership hides all ads, plus gives you double the colors in the color bucket, and more awesome pro features!

[Learn more, Memberships starting at \\$2.50/m!](#)

**Follow me
on Twitter!**

@ConvertingColor