

Converting Colors

$Yxy(43.0754, 0.3314, 0.3213)$

Have a look what the booklet for
Yxy(43.0754, 0.3314, 0.3213)
contains.

Yxy(43.0732, 0.3315, 0.3214)	3
<i>Conversions</i>	4
<i>Details</i>	6
<i>Harmonies</i>	12
<i>Previews</i>	24
<i>Color Blindness Simulation</i>	27
<i>CSS Examples</i>	30

Color

Yxy(43.0732, 0.3315, 0.3214)

Conversions

Conversions Part 1

Format	Color
Hex	C3A9AF
RGB	195, 169, 175
RGB Percent	76%, 66%, 69%
CMY	0.2353, 0.3372, 0.3138
CMYK	0.00, 0.13, 0.10, 0.24
HSL	346°, 18%, 71%
HSV	346°, 13%, 76%
XYZ	44.4268, 43.0732, 46.5174
YIQ	177.4580, 13.5700, 7.3780

Conversions

Conversions Part 2

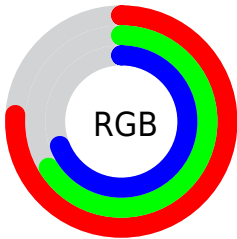
Format	Color
RYB	195, 169, 175
Decimal	12822959
CIELab	71.60, 10.43, 0.41
CIELCh	72, 10.438, 2.257
Yxy	43.0732, 0.3315, 0.3214
Android (android.graphics.Color)	4291013039 (0xFFC3A9AF)
YUV	177.4580, -1.2118, 15.3843
Hunter-Lab	65.6302, 5.9785, 3.9175

Details

The Yxy color **43.0732, 0.3315, 0.3214** is a light color, and the websafe version is hex **CC9999**. A complement of this color would be **51.1354, 0.2968, 0.3367**, and the grayscale version is **44.2206, 0.3127, 0.3290**.

A 20% lighter version of the original color is **79.7199, 0.3286, 0.3230**, and **19.8154, 0.3364, 0.3186** is the 20% darker color. If you saturate the color by 10%, you get **35.7947, 0.3495, 0.3153**, and if you desaturate by 10%, it is **51.5031, 0.3169, 0.3272**.

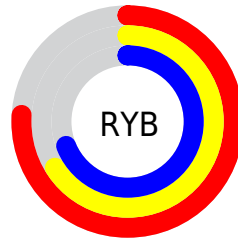
Distribution



Red (76%)

Green (66%)

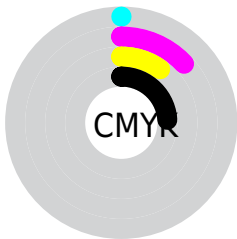
Blue (69%)



Red (76%)

Yellow (66%)

Blue (69%)

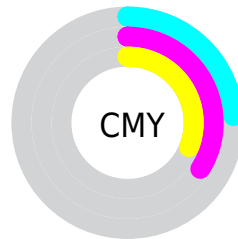


Cyan (0%)

Magenta (13%)

Yellow (10%)

Black (24%)



Cyan (24%)


Magenta (34%)

Yellow (31%)

Brightness & Saturation Gradients


These gradients show how the Yxy color 43.0732, 0.3315, 0.3214 changes by changing the brightness by 10 percent. The first figure shows a shift by +10% for each color and the second figure -10%.


Similar to the brightness gradients but the following saturation gradients show a change of the Yxy color 43.0732, 0.3315, 0.3214 by changing the saturation by 10% instead.


 43.0732, 0.3315,
0.3214


 43.0732, 0.3315,
0.3214


358.9127, 0.3220,
0.3253

 29.9426, 0.3339,
0.3204


 79.8213, 0.3280,
0.3228

 19.7950, 0.3371,
0.3191


 104.2076, 0.3267,
0.3234

 12.2461, 0.3413,
0.3174


133.1145, 0.3256,
0.3238

 6.9115, 0.3473,
0.3149

166.9264, 0.3247,
0.3242

 3.4068, 0.3565,
0.3111

206.0278, 0.3239,
0.3245

 1.3476, 0.3724,
0.3045

250.8031, 0.3232,

 0.1776, 0.5530,

0.3248

0.2320

301.6366, 0.3225,
0.3251

0.0000, 0.0000,
0.0000

43.0732, 0.3315,
0.3214

43.0732, 0.3315,
0.3214

35.7947, 0.3495,
0.3153

51.5031, 0.3169,
0.3272

29.6119, 0.3715,
0.3091

61.1255, 0.3051,
0.3325

24.4734, 0.3982,
0.3031

71.9864, 0.2955,
0.3374

20.3209, 0.4300,
0.2979

84.1277, 0.2876,
0.3419

17.0907, 0.4664,
0.2943

90.0275, 0.2803,
0.3341

■ 14.7116, 0.5059,
0.2934

■ 90.3402, 0.2778,
0.3289

■ 13.1017, 0.5453,
0.2960

■ 12.1627, 0.5803,
0.3025

■ 11.7880, 0.6000,
0.3079

Harmonies

Analogous

The Analogous color harmony consists of three colors that are next to each other on the color wheel.



43.0732, 0.3174, 0.3106



43.0732, 0.3315, 0.3214



43.0732, 0.3405, 0.3343

Triad

The Triadic color harmony groups three colors that are evenly spaced from another and form a triangle on the color wheel.



43.0732, 0.3315, 0.3214



43.0732, 0.3226, 0.3549



43.0732, 0.2843, 0.3110

Complementary

The Complementary color scheme is a pair of colors which are on the opposite of each other on the color wheel.



43.0732, 0.3315, 0.3214



51.1354, 0.2968, 0.3367

Split Complementary

Split-complementary colors differ from the complementary color scheme. The scheme consists of three colors, the original color and two neighbors of the complement color.



43.0732, 0.2857, 0.3227



43.0732, 0.3315, 0.3214



43.0732, 0.3075, 0.3485

Square

The Square scheme is like the rectangle color scheme, but the four colors are evenly spaced on the color wheel.



43.0732, 0.3315, 0.3214



43.0732, 0.3353, 0.3539



43.0732, 0.2941, 0.3365



43.0732, 0.2904, 0.3045

Rectangle

The Rectangle color scheme consists of four colors that form a rectangle on the color wheel.



43.0732, 0.3315, 0.3214



43.0732, 0.3424, 0.3425



43.0732, 0.2941, 0.3365



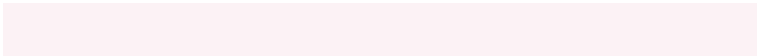
43.0732, 0.2839, 0.3144

Sweetspot

The Sweet Spot groups the original color and five complimentary colors.



43.0751, 0.3315, 0.3214



91.0661, 0.3179, 0.3268



43.1294, 0.3089, 0.2960



19.6754, 0.3189, 0.3263



0.0000, 0.0000, 0.0000



21.4041, 0.3127, 0.3290

Same Dimension

The Same Dimension uses a secret algorithm to generate beautiful new colors.



43.0751, 0.3315, 0.3214



73.1338, 0.3364, 0.3196



45.4920, 0.3356, 0.3379



10.1149, 0.3254, 0.3237



7.6736, 0.5968, 0.3061



0.3425, 0.5324, 0.2707

Inverse Universe

The Inverse Universe completely reimagines the original color for something new.



43.0751, 0.3315, 0.3214



73.1338, 0.3364, 0.3196



48.3679, 0.2924, 0.3199



10.1149, 0.3254, 0.3237



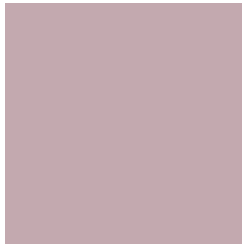
7.6736, 0.5968, 0.3061



0.3425, 0.5324, 0.2707

Previews

White Background



This preview shows how the Yxy color 43.0732, 0.3315, 0.3214 looks on a white background.

Color Contrast Check

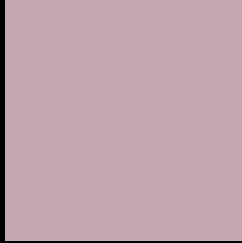
Large Text (above 18pt) WCAG AA × Fail

Any Text WCAG AA × Fail

Large Text (above 18pt) WCAG AAA × Fail

Any Text WCAG AAA × Fail

Black Background



This preview shows how the Yxy color 43.0732, 0.3315, 0.3214 looks on a black background.

Color Contrast Check

Large Text (above 18pt) WCAG AA ✓ Pass

Any Text WCAG AA ✓ Pass

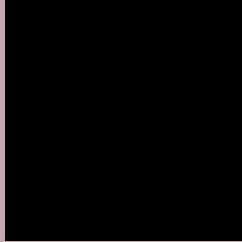
Large Text (above 18pt) WCAG AAA ✓ Pass

Any Text WCAG AAA ✓ Pass

If you want to check with other color combinations, try the [Color Contrast Checker](#).

Yxy 43.0732, 0.3315, 0.3214

Background



This preview shows how black text looks on a background with the Yxy color 43.0732, 0.3315, 0.3214.



This preview shows how white text looks on a background with the Yxy color 43.0732, 0.3315, 0.3214.

Color Blindness Simulation

Color vision deficiency is a very complex topic, and I could not describe the different causes any better than Wikipedia does, so if you want to learn more, you should check out their [article about color blindness](#).

Dichromacy



Original Color

43.0732, 0.3315, 0.3214

Protanopia

43.3393, 0.3129, 0.3250

Deuteranopia

43.1821, 0.3295, 0.3226



Tritanopia

43.0772, 0.3273, 0.3125

Trichromacy



Original Color

43.0732, 0.3315, 0.3214

Protanomaly

43.2518, 0.3192, 0.3238

Deuteranomaly

43.3139, 0.3304, 0.3226

Tritanomaly

42.9957, 0.3290, 0.3150

Monochromacy



Original Color

43.0732, 0.3315, 0.3214

Achromatopsia

43.9657, 0.3127, 0.3290

Achromatomaly

43.5970, 0.3200, 0.3264

CSS Examples

Text

The CSS property to change the color of the text to Yxy 43.0732, 0.3315, 0.3214 is called "color". The color property can be set on classes, ids or directly on the HTML element.

This example shows how text in the color `rgb(195, 169, 175)` looks like.

```
.text, #text, p{  
    color:rgb(195, 169, 175)  
}
```

If you want to add a text shadow in that color use the text-shadow property, you can generate a text shadow directly with our [CSS Text Shadow Generator](#).

Here you see how black text with a 4 pixel rgb(195, 169, 175) colored shadow looks like.

```
.shadow{ text-shadow: 4px 4px 2px rgb(195, 169, 175) }
```

Border

The CSS property to change the border of an element to Yxy 43.0732, 0.3315, 0.3214 is called "border". The border property can be set on classes, ids or directly on the HTML element.

This example shows the color as border, it can be applied via the CSS property "border" or "border-color".

```
.border, #border, table{ border:4px solid rgb(195, 169, 175) }
```

If only the border color should be changed use the property `border-color`.

```
.border{ border-color:rgb(195, 169, 175) }
```

If you want to add a box shadow in that color use:

Here you see how a box with a 4 pixel `rgb(195, 169, 175)` colored shadow looks like.

```
.boxshadow{ -moz-box-shadow:4px 4px 4px  
4px rgb(195, 169, 175); -webkit-box-  
shadow:4px 4px 4px 4px rgb(195, 169, 175);  
box-shadow:4px 4px 4px 4px rgb(195, 169,  
175) }
```


Background

The CSS property to change the background color of an element to Yxy 43.0732, 0.3315, 0.3214 is called "background". The background property can be set on classes, ids or directly on the HTML element.

```
.background, #background, body{  
background: rgb(195, 169, 175) }
```

If only the background color should be changed can be used:

```
.background{ background-color: rgb(195,  
169, 175) }
```

This example shows the color as background, it is applied via the CSS property "background".

To optimize and compress your CSS code, you can use our [online CSS compressor and optimizer](#) based on csstidy. If you want to create a linear or radial gradient as background or border, check our [CSS Gradient Generator](#).

Hey! You found this booklet interesting? Support Converting Colors with the new Membership Option!

The pro membership hides all ads, plus gives you double the colors in the color bucket, and more awesome pro features!

[Learn more, Memberships starting at \\$2.50/m!](#)

**Follow me
on Twitter!**

@ConvertingColor