

Converting Colors

$Yxy(43.0803, 0.3971, 0.3775)$

Have a look what the booklet for
Yxy(43.0803, 0.3971, 0.3775)
contains.

Yxy(43.2259, 0.3973, 0.3780)	3
<i>Conversions</i>	4
<i>Details</i>	6
<i>Harmonies</i>	12
<i>Previews</i>	24
<i>Color Blindness Simulation</i>	27
<i>CSS Examples</i>	30

Color

Yxy(43.2259, 0.3973, 0.3780)

Conversions

Conversions Part 1

Format	Color
Hex	D7A67E
RGB	215, 166, 126
RGB Percent	84%, 65%, 49%
CMY	0.1568, 0.3490, 0.5058
CMYK	0.00, 0.23, 0.41, 0.16
HSL	27°, 53%, 67%
HSV	27°, 41%, 84%
XYZ	45.4329, 43.2259, 25.6954
YIQ	176.0910, 42.0440, -2.0520

Conversions

Conversions Part 2

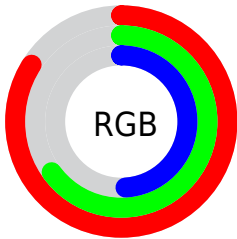
Format	Color
R _Y B	215, 199, 126
Decimal	14132862
CIE Lab	71.71, 12.89, 27.63
CIE LCh	72, 30.487, 64.985
Yxy	43.2259, 0.3973, 0.3780
Android (android.graphics.Color)	4292322942 (0xFFD7A67E)
YUV	176.0910, -24.6949, 34.1232
Hunter-Lab	65.7464, 8.2932, 22.8504

Details

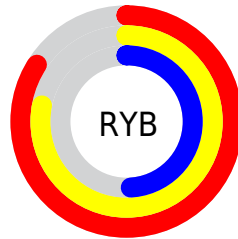
The Yxy color **43.2259, 0.3973, 0.3780** is a light color, and the websafe version is hex **CC9966**. A complement of this color would be **40.0264, 0.2474, 0.2735**, and the grayscale version is **43.5836, 0.3127, 0.3290**.

A 20% lighter version of the original color is **76.2276, 0.3672, 0.3721**, and **19.8255, 0.4218, 0.3904** is the 20% darker color. If you saturate the color by 10%, you get **38.6210, 0.4246, 0.3892**, and if you desaturate by 10%, it is **48.3509, 0.3725, 0.3659**.

Distribution



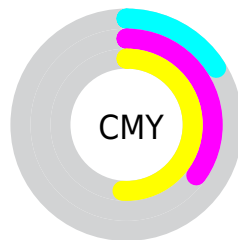
- Red (84%)
- Green (65%)
- Blue (49%)



- Red (84%)
- Yellow (78%)
- Blue (49%)



- Cyan (0%)
- Magenta (23%)
- Yellow (41%)
- Black (16%)





- Cyan (16%)
- Magenta (35%)
- Yellow (51%)

Brightness & Saturation Gradients


These gradients show how the Yxy color 43.2259, 0.3973, 0.3780 changes by changing the brightness by 10 percent. The first figure shows a shift by +10% for each color and the second figure -10%.


Similar to the brightness gradients but the following saturation gradients show a change of the Yxy color 43.2259, 0.3973, 0.3780 by changing the saturation by 10% instead.


 43.2259, 0.3973,
0.3780

 43.2259, 0.3973,
0.3780


359.5400, 0.3544,
0.3547

 30.0624, 0.4080,
0.3833

 80.0516, 0.3817,
0.3699

 19.8860, 0.4216,
0.3897


 104.4827, 0.3758,
0.3667

 12.3122, 0.4395,
0.3974


 133.4383, 0.3709,
0.3640

 6.9567, 0.4638,
0.4066

167.3030, 0.3666,
0.3617

 3.4350, 0.4991,
0.4176

206.4611, 0.3630,
0.3596

 1.3628, 0.5638,
0.4362

251.2971, 0.3598,

 0.1891, 0.7234,

0.3578

0.2766

302.1952, 0.3569,
0.3561

0.0000, 0.0000,
0.0000

43.2259, 0.3973,
0.3780

43.2259, 0.3973,
0.3780

38.6210, 0.4246,
0.3892

48.3509, 0.3725,
0.3659

34.5117, 0.4539,
0.3985

54.0072, 0.3506,
0.3537

30.8803, 0.4839,
0.4046

60.2132, 0.3315,
0.3418

27.7052, 0.5128,
0.4063

66.9843, 0.3148,
0.3305

24.9626, 0.5384,
0.4027

74.3357, 0.3005,
0.3200

■ 22.9202, 0.5572,
0.3958

■ 82.2789, 0.2881,
0.3103

■ 89.3692, 0.2886,
0.3227

■ 93.1907, 0.2889,
0.3289

Harmonies

Analogous

The Analogous color harmony consists of three colors that are next to each other on the color wheel.



43.2259, 0.3964, 0.3443



43.2259, 0.3973, 0.3780



43.2259, 0.3743, 0.4022

Triad

The Triadic color harmony groups three colors that are evenly spaced from another and form a triangle on the color wheel.



43.2259, 0.3973, 0.3780



43.2259, 0.2561, 0.3465



43.2259, 0.2856, 0.2624

Complementary

The Complementary color scheme is a pair of colors which are on the opposite of each other on the color wheel.



43.2259, 0.3973, 0.3780



40.0264, 0.2474, 0.2735

Split Complementary

Split-complementary colors differ from the complementary color scheme. The scheme consists of three colors, the original color and two neighbors of the complement color.



43.2259, 0.2517, 0.2593



43.2259, 0.3973, 0.3780



43.2259, 0.2356, 0.3043

Square

The Square scheme is like the rectangle color scheme, but the four colors are evenly spaced on the color wheel.



43.2259, 0.3973, 0.3780



43.2259, 0.2922, 0.3860



43.2259, 0.2342, 0.2734



43.2259, 0.3293, 0.2804

Rectangle

The Rectangle color scheme consists of four colors that form a rectangle on the color wheel.



43.2259, 0.3973, 0.3780



43.2259, 0.3495, 0.4080



43.2259, 0.2342, 0.2734



43.2259, 0.2728, 0.2596

Sweetspot

The Sweet Spot groups the original color and five complimentary colors.



43.2280, 0.3973, 0.3780



87.8955, 0.3328, 0.3426



32.5315, 0.3579, 0.2684



18.5471, 0.3352, 0.3442



0.0000, 0.0000, 0.0000



21.4041, 0.3127, 0.3290

Same Dimension

The Same Dimension uses a secret algorithm to generate beautiful new colors.



43.2280, 0.3973, 0.3780



57.4028, 0.4221, 0.3883



61.6032, 0.3767, 0.4249



13.3299, 0.3280, 0.3395



13.9108, 0.5547, 0.3978



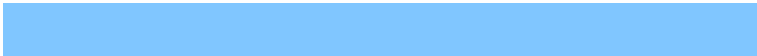
1.0029, 0.5255, 0.4210

Inverse Universe

The Inverse Universe completely reimagines the original color for something new.



40.0264, 0.2474, 0.2735



52.0401, 0.2336, 0.2586



25.8362, 0.2373, 0.2105



13.1315, 0.2982, 0.3183



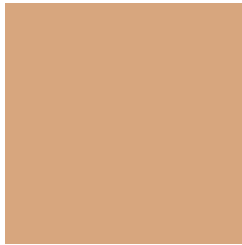
10.9617, 0.1822, 0.1760



0.8254, 0.1902, 0.2048

Previews

White Background



This preview shows how the Yxy color 43.2259, 0.3973, 0.3780 looks on a white background.

Color Contrast Check

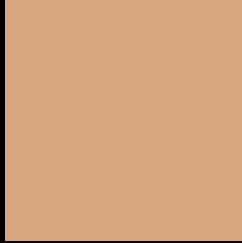
Large Text (above 18pt) WCAG AA × Fail

Any Text WCAG AA × Fail

Large Text (above 18pt) WCAG AAA × Fail

Any Text WCAG AAA × Fail

Black Background



This preview shows how the Yxy color 43.2259, 0.3973, 0.3780 looks on a black background.

Color Contrast Check

Large Text (above 18pt) WCAG AA ✓ Pass

Any Text WCAG AA ✓ Pass

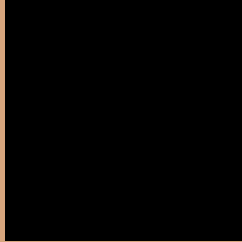
Large Text (above 18pt) WCAG AAA ✓ Pass

Any Text WCAG AAA ✓ Pass

If you want to check with other color combinations, try the [Color Contrast Checker](#).

Yxy 43.2259, 0.3973, 0.3780

Background



This preview shows how black text looks on a background with the Yxy color 43.2259, 0.3973, 0.3780.



This preview shows how white text looks on a background with the Yxy color 43.2259, 0.3973, 0.3780.

Color Blindness Simulation

Color vision deficiency is a very complex topic, and I could not describe the different causes any better than Wikipedia does, so if you want to learn more, you should check out their [article about color blindness](#).

Dichromacy



Original Color

43.2259, 0.3973, 0.3780

Protanopia

43.4812, 0.3639, 0.3903

Deuteranopia

43.4376, 0.3899, 0.3828



Tritanopia

43.1802, 0.3589, 0.3148

Trichromacy



Original Color

43.2259, 0.3973, 0.3780

Protanomaly

43.0958, 0.3751, 0.3849

Deuteranomaly

43.3605, 0.3924, 0.3812

Tritanomaly

43.1126, 0.3740, 0.3377

Monochromacy



Original Color

43.2259, 0.3973, 0.3780

Achromatopsia

43.4154, 0.3127, 0.3290

Achromatomaly

42.9208, 0.3414, 0.3476

CSS Examples

Text

The CSS property to change the color of the text to Yxy 43.2259, 0.3973, 0.3780 is called "color". The color property can be set on classes, ids or directly on the HTML element.

This example shows how text in the color `rgb(215, 166, 126)` looks like.

```
.text, #text, p{  
    color:rgb(215, 166, 126)  
}
```

If you want to add a text shadow in that color use the text-shadow property, you can generate a text shadow directly with our [CSS Text Shadow Generator](#).

Here you see how black text with a 4 pixel rgb(215, 166, 126) colored shadow looks like.

```
.shadow{ text-shadow: 4px 4px 2px rgb(215, 166, 126) }
```

Border

The CSS property to change the border of an element to Yxy 43.2259, 0.3973, 0.3780 is called "border". The border property can be set on classes, ids or directly on the HTML element.

This example shows the color as border, it can be applied via the CSS property "border" or "border-color".

```
.border, #border, table{ border:4px solid rgb(215, 166, 126) }
```

If only the border color should be changed use the property `border-color`.

```
.border{ border-color:rgb(215, 166, 126) }
```

If you want to add a box shadow in that color use:

Here you see how a box with a 4 pixel `rgb(215, 166, 126)` colored shadow looks like.

```
.boxshadow{ -moz-box-shadow:4px 4px 4px  
4px rgb(215, 166, 126); -webkit-box-  
shadow:4px 4px 4px 4px rgb(215, 166, 126);  
box-shadow:4px 4px 4px 4px rgb(215, 166,  
126) }
```


Background

The CSS property to change the background color of an element to Yxy 43.2259, 0.3973, 0.3780 is called "background". The background property can be set on classes, ids or directly on the HTML element.

```
.background, #background, body{  
background: rgb(215, 166, 126) }
```

If only the background color should be changed can be used:

```
.background{ background-color: rgb(215,  
166, 126) }
```

This example shows the color as background, it is applied via the CSS property "background".

To optimize and compress your CSS code, you can use our [online CSS compressor and optimizer](#) based on csstidy. If you want to create a linear or radial gradient as background or border, check our [CSS Gradient Generator](#).

Hey! You found this booklet interesting? Support Converting Colors with the new Membership Option!

The pro membership hides all ads, plus gives you double the colors in the color bucket, and more awesome pro features!

[Learn more, Memberships starting at \\$2.50/m!](#)

**Follow me
on Twitter!**

@ConvertingColor