

Converting Colors

$Yxy(43.0823, 0.3079, 0.3177)$

Have a look what the booklet for
Yxy(43.0823, 0.3079, 0.3177)
contains.

Yxy(43.0381, 0.3080, 0.3170)	3
<i>Conversions</i>	4
<i>Details</i>	6
<i>Harmonies</i>	12
<i>Previews</i>	24
<i>Color Blindness Simulation</i>	27
<i>CSS Examples</i>	30

Color

Yxy(43.0381, 0.3080, 0.3170)

Conversions

Conversions Part 1

Format	Color
Hex	B1AEB7
RGB	177, 174, 183
RGB Percent	69%, 68%, 72%
CMY	0.3059, 0.3176, 0.2823
CMYK	0.03, 0.05, 0.00, 0.28
HSL	260°, 6%, 70%
HSV	260°, 5%, 72%
XYZ	41.8162, 43.0381, 50.9126
YIQ	175.9230, -1.1010, 3.4350

Conversions

Conversions Part 2

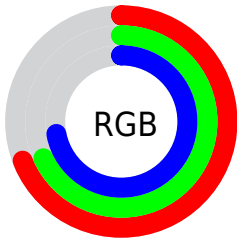
Format	Color
RYB	177, 174, 183
Decimal	11644599
CIELab	71.58, 2.78, -4.23
CIELCh	72, 5.062, 303.284
Yxy	43.0381, 0.3080, 0.3170
Android (android.graphics.Color)	4289834679 (0xFFB1AEB7)
YUV	175.9230, 3.4890, 0.9445
Hunter-Lab	65.6034, -1.0285, -0.0905

Details

The Yxy color **43.0381, 0.3080, 0.3170** is a light color, and the websafe version is hex **999999**. A complement of this color would be **46.6365, 0.3173, 0.3409**, and the grayscale version is **43.3572, 0.3127, 0.3290**.

A 20% lighter version of the original color is **79.5943, 0.3091, 0.3187**, and **19.8159, 0.3062, 0.3143** is the 20% darker color. If you saturate the color by 10%, you get **35.0727, 0.2973, 0.2908**, and if you desaturate by 10%, it is **52.0991, 0.3172, 0.3407**.

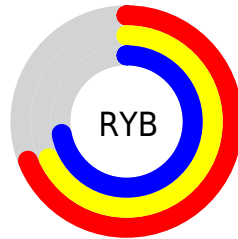
Distribution



Red (69%)

Green (68%)

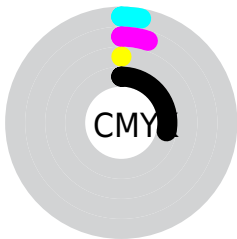
Blue (72%)



Red (69%)

Yellow (68%)

Blue (72%)

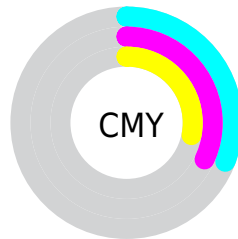


Cyan (3%)

Magenta (5%)

Yellow (0%)

Black (28%)



Cyan (31%)

Magenta (32%)

Yellow (28%)

Brightness & Saturation Gradients

These gradients show how the Yxy color 43.0381, 0.3080, 0.3170 changes by changing the brightness by 10 percent. The first figure shows a shift by +10% for each color and the second figure -10%.

Similar to the brightness gradients but the following saturation gradients show a change of the Yxy color 43.0381, 0.3080, 0.3170 by changing the saturation by 10% instead.

■ 43.0381, 0.3080,
0.3170

■ 43.0381, 0.3080,
0.3170

358.7684, 0.3104,
0.3231

■ 29.9150, 0.3074,
0.3155

■ 79.7684, 0.3089,
0.3192

■ 19.7741, 0.3066,
0.3135

104.1443, 0.3092,
0.3200

■ 12.2309, 0.3055,
0.3109

133.0400, 0.3095,
0.3207

■ 6.9012, 0.3040,
0.3071

166.8398, 0.3097,
0.3213

■ 3.4004, 0.3016,
0.3015

205.9282, 0.3099,
0.3218

■ 1.3441, 0.2974,
0.2920

250.6895, 0.3101,

■ 0.1750, 0.2615,

0.3223

0.1954

301.5081, 0.3103,
0.3227

0.0000, 0.0000,
0.0000

43.0381, 0.3080,
0.3170

43.0381, 0.3080,
0.3170

35.0727, 0.2973,
0.2908

52.0991, 0.3172,
0.3407

28.1553, 0.2850,
0.2622

62.2900, 0.3251,
0.3619

22.2429, 0.2712,
0.2317

73.6502, 0.3317,
0.3807

17.2875, 0.2559,
0.2001

86.2157, 0.3373,
0.3973

13.2370, 0.2397,
0.1688

93.1297, 0.3441,
0.4026

■ 10.0340, 0.2232,
0.1394

■ 95.3171, 0.3523,
0.4006

■ 7.6146, 0.2071,
0.1136

■ 96.1997, 0.3555,
0.3998

■ 5.9052, 0.1924,
0.0931

■ 4.8170, 0.1800,
0.0790

Harmonies

Analogous

The Analogous color harmony consists of three colors that are next to each other on the color wheel.



43.0381, 0.3020, 0.3170



43.0381, 0.3080, 0.3170



43.0381, 0.3153, 0.3201

Triad

The Triadic color harmony groups three colors that are evenly spaced from another and form a triangle on the color wheel.



43.0381, 0.3080, 0.3170



43.0381, 0.3268, 0.3376



43.0381, 0.3035, 0.3325

Complementary

The Complementary color scheme is a pair of colors which are on the opposite of each other on the color wheel.



43.0381, 0.3080, 0.3170



46.6365, 0.3173, 0.3409

Split Complementary

Split-complementary colors differ from the complementary color scheme. The scheme consists of three colors, the original color and two neighbors of the complement color.



43.0381, 0.3100, 0.3382



43.0381, 0.3080, 0.3170



43.0381, 0.3235, 0.3411

Square

The Square scheme is like the rectangle color scheme, but the four colors are evenly spaced on the color wheel.



43.0381, 0.3080, 0.3170



43.0381, 0.3262, 0.3319



43.0381, 0.3173, 0.3414



43.0381, 0.2994, 0.3258

Rectangle

The Rectangle color scheme consists of four colors that form a rectangle on the color wheel.



43.0381, 0.3080, 0.3170



43.0381, 0.3200, 0.3236



43.0381, 0.3173, 0.3414



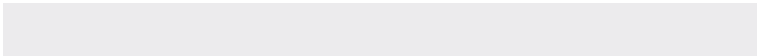
43.0381, 0.3054, 0.3346

Sweetspot

The Sweet Spot groups the original color and five complimentary colors.



43.0399, 0.3080, 0.3170



83.1720, 0.3118, 0.3266



45.1272, 0.3052, 0.3252



18.3888, 0.3118, 0.3267



93.3107, 0.3127, 0.3290



18.7317, 0.3127, 0.3290

Same Dimension

The Same Dimension uses a secret algorithm to generate beautiful new colors.



43.0399, 0.3080, 0.3170



75.2937, 0.3068, 0.3141



43.5607, 0.3118, 0.3172



9.3762, 0.3064, 0.3129



3.1082, 0.1756, 0.0741



0.1443, 0.2065, 0.0911

Inverse Universe

The Inverse Universe completely reimagines the original color for something new.



43.6387, 0.3157, 0.3211



76.6134, 0.3165, 0.3192



46.1208, 0.3136, 0.3410



9.5535, 0.3168, 0.3185



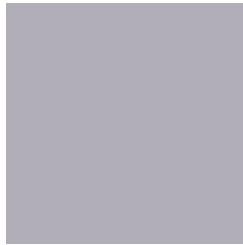
8.0188, 0.4254, 0.2117



0.2936, 0.3922, 0.1934

Previews

White Background



This preview shows how the Yxy color 43.0381, 0.3080, 0.3170 looks on a white background.

Color Contrast Check

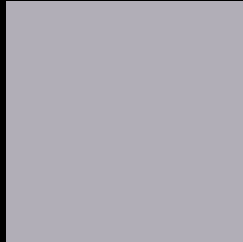
Large Text (above 18pt) WCAG AA × Fail

Any Text WCAG AA × Fail

Large Text (above 18pt) WCAG AAA × Fail

Any Text WCAG AAA × Fail

Black Background



This preview shows how the Yxy color 43.0381, 0.3080, 0.3170 looks on a black background.

Color Contrast Check

Large Text (above 18pt) WCAG AA ✓ Pass

Any Text WCAG AA ✓ Pass

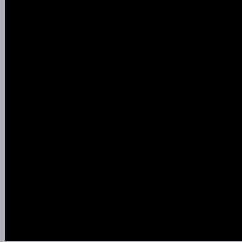
Large Text (above 18pt) WCAG AAA ✓ Pass

Any Text WCAG AAA ✓ Pass

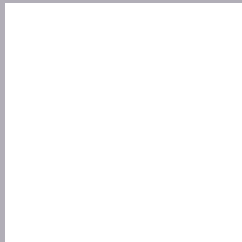
If you want to check with other color combinations, try the [Color Contrast Checker](#).

Yxy 43.0381, 0.3080, 0.3170

Background



This preview shows how black text looks on a background with the Yxy color 43.0381, 0.3080, 0.3170.



This preview shows how white text looks on a background with the Yxy color 43.0381, 0.3080, 0.3170.

Color Blindness Simulation

Color vision deficiency is a very complex topic, and I could not describe the different causes any better than Wikipedia does, so if you want to learn more, you should check out their [article about color blindness](#).

Dichromacy



Original Color

43.0381, 0.3080, 0.3170

Protanopia

42.9211, 0.3071, 0.3170

Deuteranopia

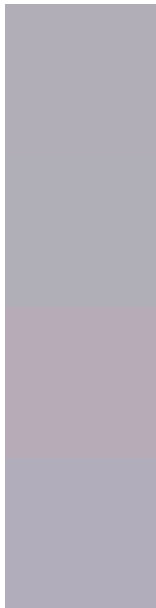
42.9015, 0.3172, 0.3109



Tritanopia

42.9400, 0.3057, 0.3105

Trichromacy



Original Color

43.0381, 0.3080, 0.3170

Protanomaly

42.9211, 0.3071, 0.3170

Deuteranomaly

42.7769, 0.3135, 0.3120

Tritanomaly

42.8973, 0.3065, 0.3118

Monochromacy



Original Color

43.0381, 0.3080, 0.3170

Achromatopsia

43.4154, 0.3127, 0.3290

Achromatomaly

43.1447, 0.3103, 0.3236

CSS Examples

Text

The CSS property to change the color of the text to Yxy 43.0381, 0.3080, 0.3170 is called "color". The color property can be set on classes, ids or directly on the HTML element.

This example shows how text in the color `rgb(177, 174, 183)` looks like.

```
.text, #text, p{  
    color:rgb(177, 174, 183)  
}
```

If you want to add a text shadow in that color use the text-shadow property, you can generate a text shadow directly with our [CSS Text Shadow Generator](#).

Here you see how black text with a 4 pixel rgb(177, 174, 183) colored shadow looks like.

```
.shadow{ text-shadow: 4px 4px 2px rgb(177, 174, 183) }
```

Border

The CSS property to change the border of an element to Yxy 43.0381, 0.3080, 0.3170 is called "border". The border property can be set on classes, ids or directly on the HTML element.

This example shows the color as border, it can be applied via the CSS property "border" or "border-color".

```
.border, #border, table{ border:4px solid rgb(177, 174, 183) }
```

If only the border color should be changed use the property `border-color`.

```
.border{ border-color:rgb(177, 174, 183) }
```

If you want to add a box shadow in that color use:

Here you see how a box with a 4 pixel `rgb(177, 174, 183)` colored shadow looks like.

```
.boxshadow{ -moz-box-shadow:4px 4px 4px  
4px rgb(177, 174, 183); -webkit-box-  
shadow:4px 4px 4px 4px rgb(177, 174, 183);  
box-shadow:4px 4px 4px 4px rgb(177, 174,  
183) }
```


Background

The CSS property to change the background color of an element to Yxy 43.0381, 0.3080, 0.3170 is called "background". The background property can be set on classes, ids or directly on the HTML element.

```
.background, #background, body{  
background: rgb(177, 174, 183) }
```

If only the background color should be changed can be used:

```
.background{ background-color: rgb(177,  
174, 183) }
```

This example shows the color as background, it is applied via the CSS property "background".

To optimize and compress your CSS code, you can use our [online CSS compressor and optimizer](#) based on csstidy. If you want to create a linear or radial gradient as background or border, check our [CSS Gradient Generator](#).

Hey! You found this booklet interesting? Support Converting Colors with the new Membership Option!

The pro membership hides all ads, plus gives you double the colors in the color bucket, and more awesome pro features!

[Learn more, Memberships starting at \\$2.50/m!](#)

**Follow me
on Twitter!**

@ConvertingColor