

Converting Colors

$Yxy(43.1182, 0.3607, 0.3516)$

Have a look what the booklet for
Yxy(43.1182, 0.3607, 0.3516)
contains.

Yxy(43.3068, 0.3610, 0.3521)	3
<i>Conversions</i>	4
<i>Details</i>	6
<i>Harmonies</i>	12
<i>Previews</i>	24
<i>Color Blindness Simulation</i>	27
<i>CSS Examples</i>	30

Color

Yxy(43.3068, 0.3610, 0.3521)

Conversions

Conversions Part 1

Format	Color
Hex	CBA997
RGB	203, 169, 151
RGB Percent	80%, 66%, 59%
CMY	0.2039, 0.3372, 0.4079
CMYK	0.00, 0.17, 0.26, 0.20
HSL	21°, 33%, 69%
HSV	21°, 26%, 80%
XYZ	44.4015, 43.3068, 35.2875
YIQ	177.1140, 26.0420, 1.6100

Conversions

Conversions Part 2

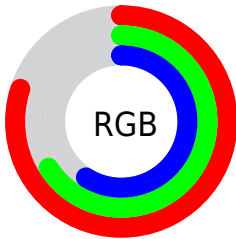
Format	Color
RYB	203, 179, 151
Decimal	13347223
CIELab	71.76, 9.67, 13.94
CIElCh	72, 16.966, 55.232
Yxy	43.3068, 0.3610, 0.3521
Android (android.graphics.Color)	4291537303 (0xFFCBA997)
YUV	177.1140, -12.8742, 22.7020
Hunter-Lab	65.8079, 5.2725, 14.2731

Details

The Yxy color **43.3068, 0.3610, 0.3521** is a light color, and the websafe version is hex **CC9999**. A complement of this color would be **45.5768, 0.2733, 0.3047**, and the grayscale version is **44.0885, 0.3127, 0.3290**.

A 20% lighter version of the original color is **78.9791, 0.3480, 0.3483**, and **19.9386, 0.3753, 0.3585** is the 20% darker color. If you saturate the color by 10%, you get **38.0168, 0.3857, 0.3616**, and if you desaturate by 10%, it is **49.2152, 0.3398, 0.3427**.

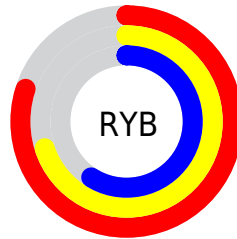
Distribution



Red (80%)

Green (66%)

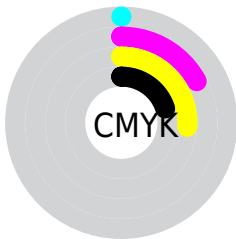
Blue (59%)



Red (80%)

Yellow (70%)

Blue (59%)

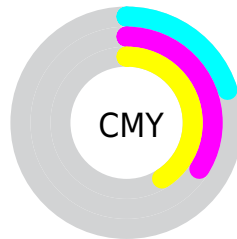


Cyan (0%)

Magenta (17%)

Yellow (26%)

Black (20%)



Cyan (20%)

Magenta (34%)

Yellow (41%)

Brightness & Saturation Gradients


These gradients show how the Yxy color 43.3068, 0.3610, 0.3521 changes by changing the brightness by 10 percent. The first figure shows a shift by +10% for each color and the second figure -10%.


Similar to the brightness gradients but the following saturation gradients show a change of the Yxy color 43.3068, 0.3610, 0.3521 by changing the saturation by 10% instead.

 43.3068, 0.3610,
0.3521


 43.3068, 0.3610,
0.3521

359.8720, 0.3364,
0.3408

 30.1259, 0.3673,
0.3548


 80.1736, 0.3520,
0.3481

 19.9342, 0.3754,
0.3582


 104.6284, 0.3486,
0.3466

 12.3472, 0.3863,
0.3625


133.6098, 0.3458,
0.3453

 6.9806, 0.4018,
0.3683

167.5024, 0.3433,
0.3441

 3.4500, 0.4251,
0.3761

206.6905, 0.3412,
0.3432

 1.3709, 0.4756,
0.3963

251.5586, 0.3394,

 0.1951, 0.6836,

0.3423

0.3164

302.4909, 0.3378,
0.3415

0.0000, 0.0000,
0.0000

43.3068, 0.3610,
0.3521

43.3068, 0.3610,
0.3521

38.0168, 0.3857,
0.3616

49.2152, 0.3398,
0.3427

33.3185, 0.4141,
0.3708

55.7557, 0.3217,
0.3338

29.1920, 0.4458,
0.3788

62.9489, 0.3063,
0.3254

25.6139, 0.4800,
0.3846

70.8127, 0.2933,
0.3177

22.5591, 0.5148,
0.3869

79.3644, 0.2822,
0.3107

■ 19.9999, 0.5474,
0.3847

■ 87.4218, 0.2817,
0.3222

■ 17.9053, 0.5747,
0.3773

■ 91.4369, 0.2822,
0.3289

■ 17.1204, 0.5854,
0.3734

Harmonies

Analogous

The Analogous color harmony consists of three colors that are next to each other on the color wheel.



43.3068, 0.3557, 0.3321



43.3068, 0.3610, 0.3521



43.3068, 0.3528, 0.3671

Triad

The Triadic color harmony groups three colors that are evenly spaced from another and form a triangle on the color wheel.



43.3068, 0.3610, 0.3521



43.3068, 0.2870, 0.3463



43.3068, 0.2907, 0.2889

Complementary

The Complementary color scheme is a pair of colors which are on the opposite of each other on the color wheel.



43.3068, 0.3610, 0.3521



45.5768, 0.2733, 0.3047

Split Complementary

Split-complementary colors differ from the complementary color scheme. The scheme consists of three colors, the original color and two neighbors of the complement color.



43.3068, 0.2735, 0.2910



43.3068, 0.3610, 0.3521



43.3068, 0.2715, 0.3234

Square

The Square scheme is like the rectangle color scheme, but the four colors are evenly spaced on the color wheel.



43.3068, 0.3610, 0.3521



43.3068, 0.3097, 0.3647



43.3068, 0.2667, 0.3032



43.3068, 0.3143, 0.2967

Rectangle

The Rectangle color scheme consists of four colors that form a rectangle on the color wheel.



43.3068, 0.3610, 0.3521



43.3068, 0.3410, 0.3718



43.3068, 0.2667, 0.3032



43.3068, 0.2840, 0.2885

Sweetspot

The Sweet Spot groups the original color and five complimentary colors.



43.3088, 0.3610, 0.3521



90.5425, 0.3259, 0.3359



38.3541, 0.3317, 0.2858



19.0163, 0.3286, 0.3373



0.0000, 0.0000, 0.0000



21.4041, 0.3127, 0.3290

Same Dimension

The Same Dimension uses a secret algorithm to generate beautiful new colors.



43.3088, 0.3610, 0.3521



67.2664, 0.3749, 0.3576



53.6620, 0.3535, 0.3826



11.8388, 0.3282, 0.3371



11.0495, 0.5829, 0.3754



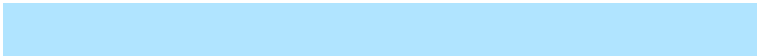
0.7112, 0.5449, 0.4055

Inverse Universe

The Inverse Universe completely reimagines the original color for something new.



45.5768, 0.2733, 0.3047



71.7154, 0.2645, 0.2983



35.9095, 0.2700, 0.2690



12.0471, 0.2983, 0.3208



13.5355, 0.1924, 0.2124



0.8366, 0.1994, 0.2378

Previews

White Background



This preview shows how the Yxy color 43.3068, 0.3610, 0.3521 looks on a white background.

Color Contrast Check

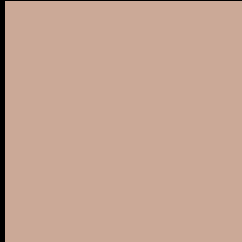
Large Text (above 18pt) WCAG AA × Fail

Any Text WCAG AA × Fail

Large Text (above 18pt) WCAG AAA × Fail

Any Text WCAG AAA × Fail

Black Background



This preview shows how the Yxy color 43.3068, 0.3610, 0.3521 looks on a black background.

Color Contrast Check

Large Text (above 18pt) WCAG AA ✓ Pass

Any Text WCAG AA ✓ Pass

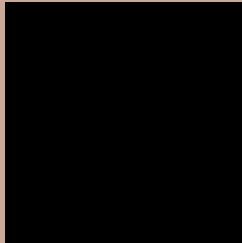
Large Text (above 18pt) WCAG AAA ✓ Pass

Any Text WCAG AAA ✓ Pass

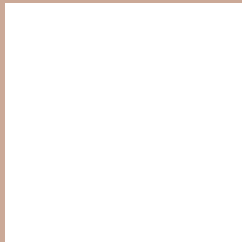
If you want to check with other color combinations, try the [Color Contrast Checker](#).

Yxy 43.3068, 0.3610, 0.3521

Background



This preview shows how black text looks on a background with the Yxy color 43.3068, 0.3610, 0.3521.



This preview shows how white text looks on a background with the Yxy color 43.3068, 0.3610, 0.3521.

Color Blindness Simulation

Color vision deficiency is a very complex topic, and I could not describe the different causes any better than Wikipedia does, so if you want to learn more, you should check out their [article about color blindness](#).

Dichromacy



Original Color

43.3068, 0.3610, 0.3521

Protanopia

43.5741, 0.3384, 0.3586

Deuteranopia

43.1669, 0.3600, 0.3521



Tritanopia

43.2464, 0.3397, 0.3130

Trichromacy



Original Color

43.3068, 0.3610, 0.3521

Protanomaly

43.2634, 0.3466, 0.3555

Deuteranomaly

43.1669, 0.3600, 0.3521

Tritanomaly

43.0787, 0.3478, 0.3266

Monochromacy



Original Color

43.3068, 0.3610, 0.3521

Achromatopsia

43.9657, 0.3127, 0.3290

Achromatomaly

43.5384, 0.3286, 0.3370

CSS Examples

Text

The CSS property to change the color of the text to Yxy 43.3068, 0.3610, 0.3521 is called "color". The color property can be set on classes, ids or directly on the HTML element.

This example shows how text in the color `rgb(203, 169, 151)` looks like.

```
.text, #text, p{  
    color:rgb(203, 169, 151)  
}
```

If you want to add a text shadow in that color use the text-shadow property, you can generate a text shadow directly with our [CSS Text Shadow Generator](#).

Here you see how black text with a 4 pixel rgb(203, 169, 151) colored shadow looks like.

```
.shadow{ text-shadow: 4px 4px 2px rgb(203, 169, 151) }
```

Border

The CSS property to change the border of an element to Yxy 43.3068, 0.3610, 0.3521 is called "border". The border property can be set on classes, ids or directly on the HTML element.

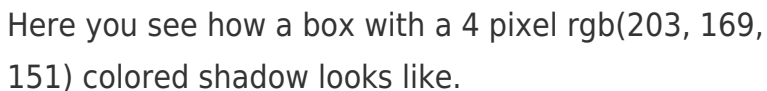
This example shows the color as border, it can be applied via the CSS property "border" or "border-color".

```
.border, #border, table{ border:4px solid rgb(203, 169, 151) }
```

If only the border color should be changed use the property `border-color`.

```
.border{ border-color:rgb(203, 169, 151) }
```

If you want to add a box shadow in that color use:



Here you see how a box with a 4 pixel `rgb(203, 169, 151)` colored shadow looks like.

```
.boxshadow{ -moz-box-shadow:4px 4px 4px 4px rgb(203, 169, 151); -webkit-box-shadow:4px 4px 4px 4px rgb(203, 169, 151); box-shadow:4px 4px 4px 4px rgb(203, 169, 151) }
```


Background

The CSS property to change the background color of an element to Yxy 43.3068, 0.3610, 0.3521 is called "background". The background property can be set on classes, ids or directly on the HTML element.

```
.background, #background, body{  
background: rgb(203, 169, 151) }
```

If only the background color should be changed can be used:

```
.background{ background-color: rgb(203,  
169, 151) }
```

This example shows the color as background, it is applied via the CSS property "background".

To optimize and compress your CSS code, you can use our [online CSS compressor and optimizer](#) based on csstidy. If you want to create a linear or radial gradient as background or border, check our [CSS Gradient Generator](#).

Hey! You found this booklet interesting? Support Converting Colors with the new Membership Option!

The pro membership hides all ads, plus gives you double the colors in the color bucket, and more awesome pro features!

[Learn more, Memberships starting at \\$2.50/m!](#)

**Follow me
on Twitter!**

@ConvertingColor