

# Converting Colors

$Yxy(43.2074, 0.3294, 0.3333)$

Have a look what the booklet for  
Yxy(43.2074, 0.3294, 0.3333)  
contains.

<b>Yxy(43.0610, 0.3298, 0.3330)</b> .....	3
<b><i>Conversions</i></b> .....	4
<b><i>Details</i></b> .....	6
<b><i>Harmonies</i></b> .....	12
<b><i>Previews</i></b> .....	24
<b><i>Color Blindness Simulation</i></b> .....	27
<b><i>CSS Examples</i></b> .....	30

# Color

**Yxy(43.0610, 0.3298, 0.3330)**

# Conversions

## Conversions Part 1

Format	Color
Hex	BCACA9
RGB	188, 172, 169
RGB Percent	74%, 67%, 66%
CMY	0.2629, 0.3254, 0.3372
CMYK	0.00, 0.08, 0.10, 0.26
HSL	10°, 12%, 70%
HSV	10°, 10%, 74%
XYZ	42.6472, 43.0610, 43.6041
YIQ	176.4420, 10.4990, 2.4590

# Conversions

## Conversions Part 2

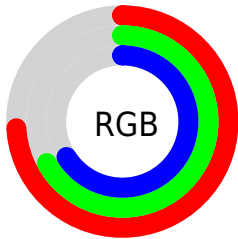
<b>Format</b>	<b>Color</b>
R <sub>Y</sub> B	188, 173, 169
Decimal	12364969
CIE Lab	71.60, 5.21, 3.61
CIE LCh	72, 6.341, 34.695
Yxy	43.0610, 0.3298, 0.3330
Android (android.graphics.Color)	4290555049 (0xFFBCACA9)
YUV	176.4420, -3.6689, 10.1364
Hunter-Lab	65.6209, 1.1711, 6.5373

# Details

The Yxy color **43.0610, 0.3298, 0.3330** is a light color, and the websafe version is hex **999999**. A complement of this color would be **46.7466, 0.2974, 0.3250**, and the grayscale version is **43.6735, 0.3127, 0.3290**.

A 20% lighter version of the original color is **79.5531, 0.3266, 0.3321**, and **19.8682, 0.3353, 0.3345** is the 20% darker color. If you saturate the color by 10%, you get **36.7398, 0.3504, 0.3373**, and if you desaturate by 10%, it is **50.2040, 0.3128, 0.3290**.

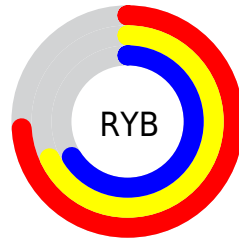
# Distribution



Red (74%)

Green (67%)

Blue (66%)



Red (74%)

Yellow (68%)

Blue (66%)

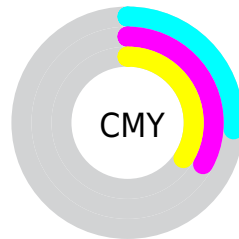


Cyan (0%)

Magenta (8%)

Yellow (10%)

Black (26%)



Cyan (26%)

Magenta (33%)


Yellow (34%)


# Brightness & Saturation Gradients

These gradients show how the Yxy color 43.0610, 0.3298, 0.3330 changes by changing the brightness by 10 percent. The first figure shows a shift by +10% for each color and the second figure -10%.


Similar to the brightness gradients but the following saturation gradients show a change of the Yxy color 43.0610, 0.3298, 0.3330 by changing the saturation by 10% instead.





 43.0610, 0.3298,  
0.3330

 43.0610, 0.3298,  
0.3330


358.8626, 0.3211,  
0.3310

 29.9330, 0.3320,  
0.3335


 79.8029, 0.3266,  
0.3323

 19.7877, 0.3349,  
0.3341


104.1856, 0.3254,  
0.3320

 12.2408, 0.3388,  
0.3349


133.0886, 0.3244,  
0.3318

 6.9079, 0.3443,  
0.3360

166.8963, 0.3236,  
0.3316

 3.4046, 0.3529,  
0.3376

205.9932, 0.3228,  
0.3314

 1.3464, 0.3676,  
0.3401

250.7636, 0.3222,

 0.1767, 0.6256,

0.3313

0.3744

301.5919, 0.3216,  
0.3312

0.0000, 0.0000,  
0.0000

43.0610, 0.3298,  
0.3330

43.0610, 0.3298,  
0.3330

36.7398, 0.3504,  
0.3373

50.2040, 0.3128,  
0.3290

31.2055, 0.3754,  
0.3417

58.1909, 0.2989,  
0.3254

26.4287, 0.4055,  
0.3460

67.0503, 0.2874,  
0.3221

22.3763, 0.4408,  
0.3499

76.8074, 0.2778,  
0.3191

19.0128, 0.4808,  
0.3528

86.9610, 0.2737,  
0.3247

■ 16.2993, 0.5235,  
0.3539

■ 89.4270, 0.2741,  
0.3289

■ 14.1933, 0.5650,  
0.3524

■ 12.6470, 0.5999,  
0.3480

■ 11.6057, 0.6247,  
0.3422

# Harmonies

## Analogous

The Analogous color harmony consists of three colors that are next to each other on the color wheel.



43.0610, 0.3247, 0.3250



43.0610, 0.3298, 0.3330



43.0610, 0.3302, 0.3401

# Triad

The Triadic color harmony groups three colors that are evenly spaced from another and form a triangle on the color wheel.



43.0610, 0.3298, 0.3330



43.0610, 0.3089, 0.3402



43.0610, 0.2996, 0.3139

# Complementary

The Complementary color scheme is a pair of colors which are on the opposite of each other on the color wheel.



43.0610, 0.3298, 0.3330



46.7466, 0.2974, 0.3250

# Split Complementary

Split-complementary colors differ from the complementary color scheme. The scheme consists of three colors, the original color and two neighbors of the complement color.



43.0610, 0.2955, 0.3177



43.0610, 0.3298, 0.3330



43.0610, 0.3008, 0.3329

# Square

The Square scheme is like the rectangle color scheme, but the four colors are evenly spaced on the color wheel.



43.0610, 0.3298, 0.3330



43.0610, 0.3181, 0.3444



43.0610, 0.2959, 0.3246



43.0610, 0.3072, 0.3141



# Rectangle

The Rectangle color scheme consists of four colors that form a rectangle on the color wheel.



43.0610, 0.3298, 0.3330



43.0610, 0.3278, 0.3433



43.0610, 0.2959, 0.3246



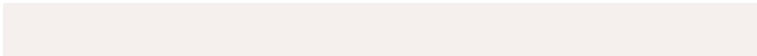
43.0610, 0.2978, 0.3147

# Sweetspot

The Sweet Spot groups the original color and five complimentary colors.



43.0629, 0.3298, 0.3330



87.0287, 0.3175, 0.3302



42.5745, 0.3163, 0.3082



18.4861, 0.3189, 0.3305



95.5105, 0.3127, 0.3290



19.5994, 0.3127, 0.3290

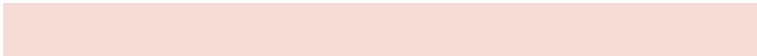


# Same Dimension

The Same Dimension uses a secret algorithm to generate beautiful new colors.



43.0629, 0.3298, 0.3330



75.5342, 0.3338, 0.3339



46.7345, 0.3285, 0.3451



9.7742, 0.3284, 0.3327



7.9775, 0.6230, 0.3435



0.3905, 0.5827, 0.3756



# Inverse Universe

The Inverse Universe completely reimagines the original color for something new.



46.7466, 0.2974, 0.3250



83.4954, 0.2942, 0.3241



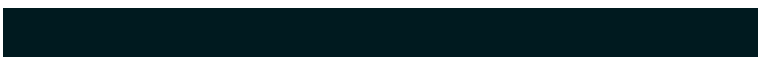
42.9768, 0.2973, 0.3124



10.5448, 0.2985, 0.3253



19.2554, 0.2107, 0.2784

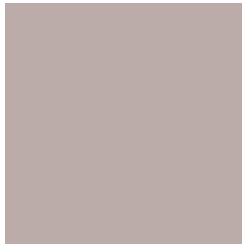


0.8245, 0.2144, 0.2917



# Previews

## White Background



This preview shows how the Yxy color 43.0610, 0.3298, 0.3330 looks on a white background.

## Color Contrast Check

Large Text (above 18pt) WCAG AA × Fail

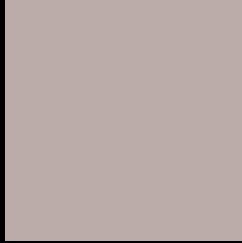
Any Text WCAG AA × Fail

Large Text (above 18pt) WCAG AAA × Fail

Any Text WCAG AAA × Fail



# Black Background



This preview shows how the Yxy color 43.0610, 0.3298, 0.3330 looks on a black background.

## Color Contrast Check

Large Text (above 18pt) WCAG AA ✓ Pass

Any Text WCAG AA ✓ Pass

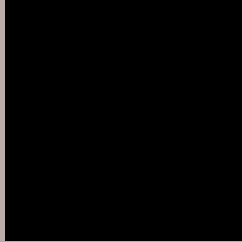
Large Text (above 18pt) WCAG AAA ✓ Pass

Any Text WCAG AAA ✓ Pass

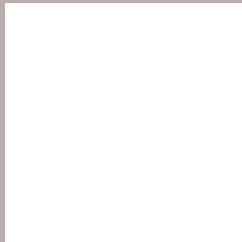
If you want to check with other color combinations, try the [Color Contrast Checker](#).

**Yxy 43.0610, 0.3298, 0.3330**

## Background



This preview shows how black text looks on a background with the Yxy color 43.0610, 0.3298, 0.3330.



This preview shows how white text looks on a background with the Yxy color 43.0610, 0.3298, 0.3330.

# Color Blindness Simulation

Color vision deficiency is a very complex topic, and I could not describe the different causes any better than Wikipedia does, so if you want to learn more, you should check out their [article about color blindness](#).

## Dichromacy



### Original Color

43.0610, 0.3298, 0.3330

### Protanopia

43.2655, 0.3213, 0.3357

### Deuteranopia

43.2161, 0.3367, 0.3304



## Tritanopia

43.1155, 0.3198, 0.3123

# Trichromacy



## Original Color

43.0610, 0.3298, 0.3330

## Protanomaly

43.2417, 0.3241, 0.3344

## Deuteranomaly

43.1969, 0.3337, 0.3317

## Tritanomaly

43.1590, 0.3231, 0.3199

# Monochromacy



## Original Color

43.0610, 0.3298, 0.3330

## Achromatopsia

43.4154, 0.3127, 0.3290

## Achromatomaly

43.3804, 0.3188, 0.3317

# CSS Examples

## Text

The CSS property to change the color of the text to Yxy 43.0610, 0.3298, 0.3330 is called "color". The color property can be set on classes, ids or directly on the HTML element.

This example shows how text in the color `rgb(188, 172, 169)` looks like.

```
.text, #text, p{  
    color:rgb(188, 172, 169)  
}
```

If you want to add a text shadow in that color use the text-shadow property, you can generate a text shadow directly with our [CSS Text Shadow Generator](#).

Here you see how black text with a 4 pixel rgb(188, 172, 169) colored shadow looks like.

```
.shadow{ text-shadow: 4px 4px 2px rgb(188, 172, 169) }
```

## Border

The CSS property to change the border of an element to Yxy 43.0610, 0.3298, 0.3330 is called "border". The border property can be set on classes, ids or directly on the HTML element.

This example shows the color as border, it can be applied via the CSS property "border" or "border-color".

```
.border, #border, table{ border:4px solid rgb(188, 172, 169) }
```

If only the border color should be changed use the property `border-color`.

```
.border{ border-color:rgb(188, 172, 169) }
```

If you want to add a box shadow in that color use:

Here you see how a box with a 4 pixel `rgb(188, 172, 169)` colored shadow looks like.

```
.boxshadow{ -moz-box-shadow:4px 4px 4px  
4px rgb(188, 172, 169); -webkit-box-  
shadow:4px 4px 4px 4px rgb(188, 172, 169);  
box-shadow:4px 4px 4px 4px rgb(188, 172,  
169) }
```



# Background

The CSS property to change the background color of an element to Yxy 43.0610, 0.3298, 0.3330 is called "background". The background property can be set on classes, ids or directly on the HTML element.

```
.background, #background, body{  
background: rgb(188, 172, 169) }
```

If only the background color should be changed can be used:

```
.background{ background-color: rgb(188,  
172, 169) }
```

This example shows the color as background, it is applied via the CSS property "background".

To optimize and compress your CSS code, you can use our [online CSS compressor and optimizer](#) based on csstidy. If you want to create a linear or radial gradient as background or border, check our [CSS Gradient Generator](#).

Hey! You found this booklet interesting? Support Converting Colors with the new Membership Option!

The pro membership hides all ads, plus gives you double the colors in the color bucket, and more awesome pro features!

**[Learn more, Memberships starting at \\$2.50/m!](#)**

**Follow me  
on Twitter!**

@ConvertingColor