

# Converting Colors

$Yxy(43.2478, 0.3545, 0.3622)$

Have a look what the booklet for  
Yxy(43.2478, 0.3545, 0.3622)  
contains.

<b>Yxy(43.0810, 0.3551, 0.3619)</b> .....	3
<b><i>Conversions</i></b> .....	4
<b><i>Details</i></b> .....	6
<b><i>Harmonies</i></b> .....	12
<b><i>Previews</i></b> .....	24
<b><i>Color Blindness Simulation</i></b> .....	27
<b><i>CSS Examples</i></b> .....	30

# Color

**Yxy(43.0810, 0.3551, 0.3619)**

# Conversions

## Conversions Part 1

<b>Format</b>	<b>Color</b>
Hex	C2AC93
RGB	194, 172, 147
RGB Percent	76%, 67%, 58%
CMY	0.2391, 0.3255, 0.4235
CMYK	0.00, 0.11, 0.24, 0.24
HSL	32°, 28%, 67%
HSV	32°, 24%, 76%
XYZ	42.2715, 43.0810, 33.6887
YIQ	175.7280, 21.1370, -3.1110

# Conversions

## Conversions Part 2

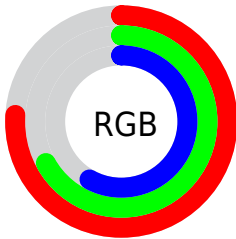
<b>Format</b>	<b>Color</b>
<b>R<sub>YB</sub></b>	188, 194, 147
Decimal	12758163
CIE <sub>Lab</sub>	71.61, 4.03, 15.78
CIE <sub>LCh</sub>	72, 16.287, 75.681
Yxy	43.0810, 0.3551, 0.3619
Android (android.graphics.Color)	4290948243 (0xFFC2AC93)
YUV	175.7280, -14.1629, 16.0245
Hunter-Lab	65.6361, 0.0959, 15.5139

# Details

The Yxy color **43.0810, 0.3551, 0.3619** is a light color, and the websafe version is hex **CC9999**. A complement of this color would be **38.4835, 0.2745, 0.2937**, and the grayscale version is **43.3360, 0.3127, 0.3290**.

A 20% lighter version of the original color is **79.6644, 0.3473, 0.3557**, and **19.8529, 0.3681, 0.3721** is the 20% darker color. If you saturate the color by 10%, you get **39.1825, 0.3764, 0.3762**, and if you desaturate by 10%, it is **47.3227, 0.3361, 0.3479**.

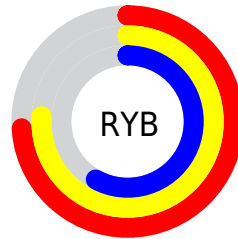
# Distribution



Red (76%)

Green (67%)

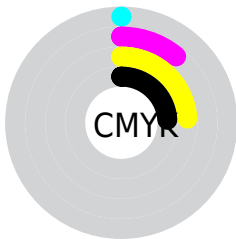
Blue (58%)



Red (74%)

Yellow (76%)

Blue (58%)

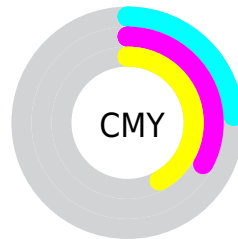


Cyan (0%)

Magenta (11%)

Yellow (24%)

Black (24%)



Cyan (24%)

Magenta (33%)


Yellow (42%)


# Brightness & Saturation Gradients

These gradients show how the Yxy color 43.0810, 0.3551, 0.3619 changes by changing the brightness by 10 percent. The first figure shows a shift by +10% for each color and the second figure -10%.

Similar to the brightness gradients but the following saturation gradients show a change of the Yxy color 43.0810, 0.3551, 0.3619 by changing the saturation by 10% instead.





 43.0810, 0.3551,  
0.3619


 43.0810, 0.3551,  
0.3619


358.9448, 0.3336,  
0.3455

 29.9487, 0.3606,  
0.3660


 79.8331, 0.3472,  
0.3559

 19.7996, 0.3676,  
0.3712


 104.2216, 0.3443,  
0.3537

 12.2495, 0.3771,  
0.3780


133.1310, 0.3418,  
0.3518

 6.9138, 0.3903,  
0.3874

166.9457, 0.3397,  
0.3502

 3.4083, 0.4101,  
0.4008

206.0500, 0.3378,  
0.3488

 1.3484, 0.4627,  
0.4405

250.8283, 0.3362,

 0.1782, 0.6003,

0.3475

0.3997

301.6651, 0.3348,  
0.3464

0.0000, 0.0000,  
0.0000

43.0810, 0.3551,  
0.3619

43.0810, 0.3551,  
0.3619

39.1825, 0.3764,  
0.3762

47.3227, 0.3361,  
0.3479

35.6115, 0.3998,  
0.3901

51.9112, 0.3192,  
0.3345

32.3596, 0.4248,  
0.4028

56.8572, 0.3044,  
0.3218

29.4156, 0.4508,  
0.4132

62.1695, 0.2915,  
0.3101

26.7673, 0.4766,  
0.4201

67.8560, 0.2801,  
0.2993

■ 24.4015, 0.5005,  
0.4224

■ 73.3713, 0.2747,  
0.2980

■ 22.3029, 0.5212,  
0.4193

■ 78.4609, 0.2756,  
0.3080

■ 21.2022, 0.5319,  
0.4159

■ 83.8167, 0.2764,  
0.3179

■ 89.4424, 0.2772,  
0.3276

# Harmonies

## Analogous

The Analogous color harmony consists of three colors that are next to each other on the color wheel.



43.0810, 0.3589, 0.3454



43.0810, 0.3551, 0.3619



43.0810, 0.3397, 0.3702

# Triad

The Triadic color harmony groups three colors that are evenly spaced from another and form a triangle on the color wheel.



43.0810, 0.3551, 0.3619



43.0810, 0.2768, 0.3307



43.0810, 0.3067, 0.2945

# Complementary

The Complementary color scheme is a pair of colors which are on the opposite of each other on the color wheel.



43.0810, 0.3551, 0.3619



38.4835, 0.2745, 0.2937

# Split Complementary

Split-complementary colors differ from the complementary color scheme. The scheme consists of three colors, the original color and two neighbors of the complement color.



43.0810, 0.2854, 0.2900



43.0810, 0.3551, 0.3619



43.0810, 0.2686, 0.3098

# Square

The Square scheme is like the rectangle color scheme, but the four colors are evenly spaced on the color wheel.



43.0810, 0.3551, 0.3619



43.0810, 0.2944, 0.3521



43.0810, 0.2717, 0.2952



43.0810, 0.3304, 0.3074



# Rectangle

The Rectangle color scheme consists of four colors that form a rectangle on the color wheel.



43.0810, 0.3551, 0.3619



43.0810, 0.3252, 0.3693



43.0810, 0.2717, 0.2952



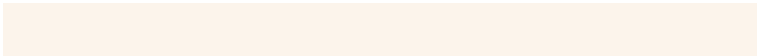
43.0810, 0.2990, 0.2920

# Sweetspot

The Sweet Spot groups the original color and five complimentary colors.



43.0830, 0.3551, 0.3619



91.5703, 0.3238, 0.3382



35.2305, 0.3390, 0.2992



19.9391, 0.3249, 0.3391



0.0000, 0.0000, 0.0000



21.4041, 0.3127, 0.3290



# Same Dimension

The Same Dimension uses a secret algorithm to generate beautiful new colors.



43.0830, 0.3551, 0.3619



74.2691, 0.3659, 0.3693



52.0706, 0.3482, 0.3889



10.9445, 0.3276, 0.3413



14.1013, 0.5300, 0.4174



0.7463, 0.4989, 0.4421

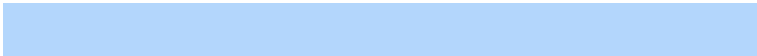


# Inverse Universe

The Inverse Universe completely reimagines the original color for something new.



38.4835, 0.2745, 0.2937



64.5251, 0.2659, 0.2849



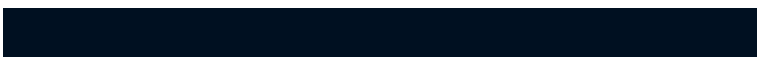
31.0374, 0.2724, 0.2614



10.5084, 0.2984, 0.3164



7.6266, 0.1748, 0.1492

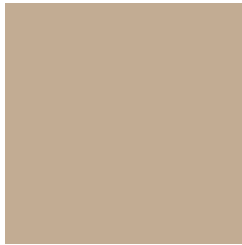


0.4674, 0.1866, 0.1917



# Previews

## White Background



This preview shows how the Yxy color 43.0810, 0.3551, 0.3619 looks on a white background.

## Color Contrast Check

Large Text (above 18pt) WCAG AA × Fail

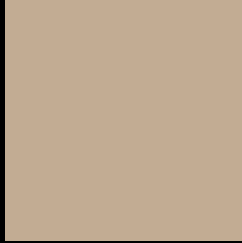
Any Text WCAG AA × Fail

Large Text (above 18pt) WCAG AAA × Fail

Any Text WCAG AAA × Fail



# Black Background



This preview shows how the Yxy color 43.0810, 0.3551, 0.3619 looks on a black background.

## Color Contrast Check

Large Text (above 18pt) WCAG AA ✓ Pass

Any Text WCAG AA ✓ Pass

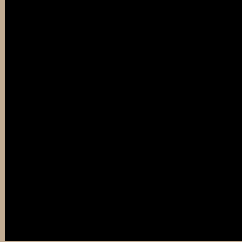
Large Text (above 18pt) WCAG AAA ✓ Pass

Any Text WCAG AAA ✓ Pass

If you want to check with other color combinations, try the [Color Contrast Checker](#).

**Yxy 43.0810, 0.3551, 0.3619**

## **Background**



This preview shows how black text looks on a background with the Yxy color 43.0810, 0.3551, 0.3619.



This preview shows how white text looks on a background with the Yxy color 43.0810, 0.3551, 0.3619.

# Color Blindness Simulation

Color vision deficiency is a very complex topic, and I could not describe the different causes any better than Wikipedia does, so if you want to learn more, you should check out their [article about color blindness](#).

## Dichromacy



### Original Color

43.0810, 0.3551, 0.3619

### Protanopia

43.1442, 0.3439, 0.3640

### Deuteranopia

43.0706, 0.3628, 0.3560



## Tritanopia

42.9385, 0.3301, 0.3126

# Trichromacy



## Original Color

43.0810, 0.3551, 0.3619

## Protanomaly

43.1016, 0.3479, 0.3638

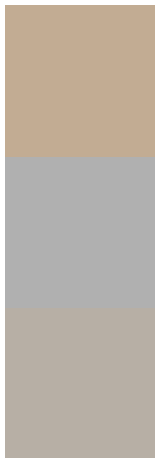
## Deuteranomaly

43.0297, 0.3596, 0.3576

## Tritanomaly

43.0734, 0.3396, 0.3304

# Monochromacy



## Original Color

43.0810, 0.3551, 0.3619

## Achromatopsia

43.4154, 0.3127, 0.3290

## Achromatomaly

43.4438, 0.3283, 0.3424

# CSS Examples

## Text

The CSS property to change the color of the text to Yxy 43.0810, 0.3551, 0.3619 is called "color". The color property can be set on classes, ids or directly on the HTML element.

This example shows how text in the color `rgb(194, 172, 147)` looks like.

```
.text, #text, p{  
    color:rgb(194, 172, 147)  
}
```

If you want to add a text shadow in that color use the text-shadow property, you can generate a text shadow directly with our [CSS Text Shadow Generator](#).

Here you see how black text with a 4 pixel rgb(194, 172, 147) colored shadow looks like.

```
.shadow{ text-shadow: 4px 4px 2px rgb(194, 172, 147) }
```

## Border

The CSS property to change the border of an element to Yxy 43.0810, 0.3551, 0.3619 is called "border". The border property can be set on classes, ids or directly on the HTML element.

This example shows the color as border, it can be applied via the CSS property "border" or "border-color".

```
.border, #border, table{ border:4px solid rgb(194, 172, 147) }
```

If only the border color should be changed use the property `border-color`.

```
.border{ border-color:rgb(194, 172, 147) }
```

If you want to add a box shadow in that color use:

Here you see how a box with a 4 pixel `rgb(194, 172, 147)` colored shadow looks like.

```
.boxshadow{ -moz-box-shadow:4px 4px 4px  
4px rgb(194, 172, 147); -webkit-box-  
shadow:4px 4px 4px 4px rgb(194, 172, 147);  
box-shadow:4px 4px 4px 4px rgb(194, 172,  
147) }
```



# Background

The CSS property to change the background color of an element to Yxy 43.0810, 0.3551, 0.3619 is called "background". The background property can be set on classes, ids or directly on the HTML element.

```
.background, #background, body{  
background: rgb(194, 172, 147) }
```

If only the background color should be changed can be used:

```
.background{ background-color: rgb(194,  
172, 147) }
```

This example shows the color as background, it is applied via the CSS property "background".

To optimize and compress your CSS code, you can use our [online CSS compressor and optimizer](#) based on csstidy. If you want to create a linear or radial gradient as background or border, check our [CSS Gradient Generator](#).

Hey! You found this booklet interesting? Support Converting Colors with the new Membership Option!

The pro membership hides all ads, plus gives you double the colors in the color bucket, and more awesome pro features!

**[Learn more, Memberships starting at \\$2.50/m!](#)**

**Follow me  
on Twitter!**

@ConvertingColor