

Converting Colors

$Yxy(43.3200, 0.3407, 0.3447)$

Have a look what the booklet for
Yxy(43.3200, 0.3407, 0.3447)
contains.

Yxy(43.2496, 0.3415, 0.3448)	3
Conversions	4
Details	6
Harmonies	12
Previews	24
Color Blindness Simulation	27
CSS Examples	30

Color

Yxy(43.2496, 0.3415, 0.3448)

Conversions

Conversions Part 1

Format	Color
Hex	C0ACA0
RGB	192, 172, 160
RGB Percent	75%, 67%, 63%
CMY	0.2471, 0.3255, 0.3725
CMYK	0.00, 0.10, 0.17, 0.25
HSL	23°, 20%, 69%
HSV	23°, 17%, 75%
XYZ	42.8357, 43.2496, 39.3486
YIQ	176.6120, 15.7720, 0.5080

Conversions

Conversions Part 2

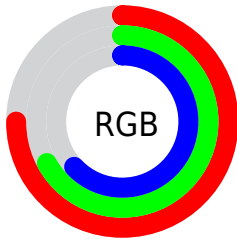
Format	Color
RYB	192, 179, 160
Decimal	12627104
CIELab	71.72, 5.23, 8.79
CIELCh	72, 10.227, 59.267
Yxy	43.2496, 0.3415, 0.3448
Android (android.graphics.Color)	4290817184 (0xFFC0ACA0)
YUV	176.6120, -8.1897, 13.4953
Hunter-Lab	65.7644, 1.1782, 10.5603

Details

The Yxy color **43.2496, 0.3415, 0.3448** is a light color, and the websafe version is hex **999999**. A complement of this color would be **43.9205, 0.2871, 0.3127**, and the grayscale version is **43.7908, 0.3127, 0.3290**.

A 20% lighter version of the original color is **79.9842, 0.3362, 0.3413**, and **19.9403, 0.3491, 0.3488** is the 20% darker color. If you saturate the color by 10%, you get **38.2679, 0.3627, 0.3549**, and if you desaturate by 10%, it is **48.7513, 0.3233, 0.3351**.

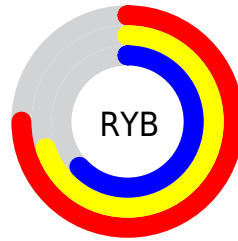
Distribution



Red (75%)

Green (67%)

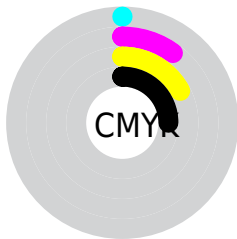
Blue (63%)



Red (75%)

Yellow (70%)

Blue (63%)

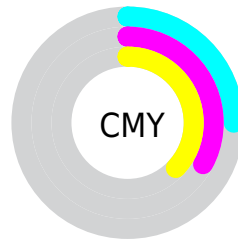


Cyan (0%)

Magenta (10%)

Yellow (17%)

Black (25%)



Cyan (25%)


Magenta (33%)

Yellow (37%)

Brightness & Saturation Gradients


These gradients show how the Yxy color 43.2496, 0.3415, 0.3448 changes by changing the brightness by 10 percent. The first figure shows a shift by +10% for each color and the second figure -10%.


Similar to the brightness gradients but the following saturation gradients show a change of the Yxy color 43.2496, 0.3415, 0.3448 by changing the saturation by 10% instead.


 43.2496, 0.3415,
0.3448


 43.2496, 0.3415,
0.3448


359.6372, 0.3269,
0.3369

 30.0810, 0.3452,
0.3467


 80.0874, 0.3361,
0.3420

 19.9001, 0.3501,
0.3492


 104.5254, 0.3341,
0.3409

 12.3224, 0.3566,
0.3525


133.4886, 0.3324,
0.3400

 6.9637, 0.3659,
0.3571

167.3614, 0.3310,
0.3392

 3.4394, 0.3801,
0.3637

206.5283, 0.3297,
0.3385

 1.3652, 0.4054,
0.3751

251.3737, 0.3287,

 0.1909, 0.6182,

0.3379

0.3818

302.2819, 0.3277,
0.3374

0.0000, 0.0000,
0.0000

43.2496, 0.3415,
0.3448

43.2496, 0.3415,
0.3448

38.2679, 0.3627,
0.3549

48.7513, 0.3233,
0.3351

33.7847, 0.3871,
0.3652

54.7820, 0.3078,
0.3260

29.7856, 0.4150,
0.3750

61.3580, 0.2946,
0.3177

26.2532, 0.4458,
0.3835

68.4930, 0.2832,
0.3100

23.1689, 0.4787,
0.3897

76.1353, 0.2741,
0.3040

■ 20.5126, 0.5119,
0.3923

■ 83.1216, 0.2752,
0.3171

■ 18.2624, 0.5428,
0.3901

■ 89.9463, 0.2762,
0.3289

■ 16.3928, 0.5689,
0.3829

■ 15.8442, 0.5770,
0.3800

Harmonies

Analogous

The Analogous color harmony consists of three colors that are next to each other on the color wheel.



43.2496, 0.3394, 0.3329



43.2496, 0.3415, 0.3448



43.2496, 0.3357, 0.3529

Triad

The Triadic color harmony groups three colors that are evenly spaced from another and form a triangle on the color wheel.



43.2496, 0.3415, 0.3448



43.2496, 0.2956, 0.3377



43.2496, 0.3013, 0.3047

Complementary

The Complementary color scheme is a pair of colors which are on the opposite of each other on the color wheel.



43.2496, 0.3415, 0.3448



43.9205, 0.2871, 0.3127

Split Complementary

Split-complementary colors differ from the complementary color scheme. The scheme consists of three colors, the original color and two neighbors of the complement color.



43.2496, 0.2900, 0.3054



43.2496, 0.3415, 0.3448



43.2496, 0.2868, 0.3241

Square

The Square scheme is like the rectangle color scheme, but the four colors are evenly spaced on the color wheel.



43.2496, 0.3415, 0.3448



43.2496, 0.3091, 0.3490



43.2496, 0.2847, 0.3124



43.2496, 0.3159, 0.3102

Rectangle

The Rectangle color scheme consists of four colors that form a rectangle on the color wheel.



43.2496, 0.3415, 0.3448



43.2496, 0.3283, 0.3548



43.2496, 0.2847, 0.3124



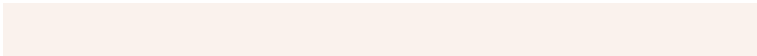
43.2496, 0.2970, 0.3042

Sweetspot

The Sweet Spot groups the original color and five complimentary colors.



43.2515, 0.3415, 0.3448



90.0028, 0.3207, 0.3336



39.6550, 0.3251, 0.3028



19.1481, 0.3219, 0.3343



97.7402, 0.3127, 0.3290



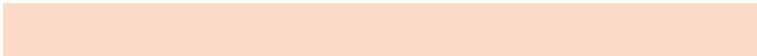
20.4902, 0.3127, 0.3290

Same Dimension

The Same Dimension uses a secret algorithm to generate beautiful new colors.



43.2515, 0.3415, 0.3448



74.9624, 0.3489, 0.3485



49.5968, 0.3383, 0.3646



10.6832, 0.3280, 0.3377



10.8003, 0.5748, 0.3818



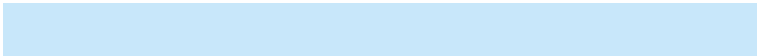
0.5994, 0.5326, 0.4153

Inverse Universe

The Inverse Universe completely reimagines the original color for something new.



43.9205, 0.2871, 0.3127



76.4006, 0.2814, 0.3087



37.9268, 0.2861, 0.2907



10.7729, 0.2984, 0.3202



11.7493, 0.1896, 0.2026



0.6365, 0.1983, 0.2340

Previews

White Background



This preview shows how the Yxy color 43.2496, 0.3415, 0.3448 looks on a white background.

Color Contrast Check

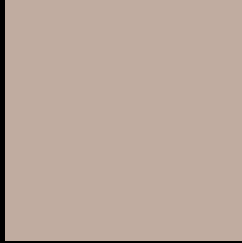
Large Text (above 18pt) WCAG AA × Fail

Any Text WCAG AA × Fail

Large Text (above 18pt) WCAG AAA × Fail

Any Text WCAG AAA × Fail

Black Background



This preview shows how the Yxy color 43.2496, 0.3415, 0.3448 looks on a black background.

Color Contrast Check

Large Text (above 18pt) WCAG AA ✓ Pass

Any Text WCAG AA ✓ Pass

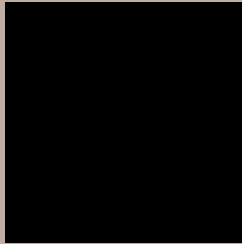
Large Text (above 18pt) WCAG AAA ✓ Pass

Any Text WCAG AAA ✓ Pass

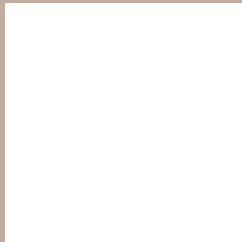
If you want to check with other color combinations, try the [Color Contrast Checker](#).

Yxy 43.2496, 0.3415, 0.3448

Background



This preview shows how black text looks on a background with the Yxy color 43.2496, 0.3415, 0.3448.



This preview shows how white text looks on a background with the Yxy color 43.2496, 0.3415, 0.3448.

Color Blindness Simulation

Color vision deficiency is a very complex topic, and I could not describe the different causes any better than Wikipedia does, so if you want to learn more, you should check out their [article about color blindness](#).

Dichromacy



Original Color

43.2496, 0.3415, 0.3448

Protanopia

43.2137, 0.3299, 0.3465

Deuteranopia

43.2933, 0.3476, 0.3420



Tritanopia

43.3554, 0.3253, 0.3125

Trichromacy



Original Color

43.2496, 0.3415, 0.3448

Protanomaly

43.2844, 0.3346, 0.3464

Deuteranomaly

43.3996, 0.3455, 0.3433

Tritanomaly

43.2748, 0.3313, 0.3239

Monochromacy



Original Color

43.2496, 0.3415, 0.3448

Achromatopsia

43.9657, 0.3127, 0.3290

Achromatomaly

43.5453, 0.3223, 0.3344

CSS Examples

Text

The CSS property to change the color of the text to Yxy 43.2496, 0.3415, 0.3448 is called "color". The color property can be set on classes, ids or directly on the HTML element.

This example shows how text in the color `rgb(192, 172, 160)` looks like.

```
.text, #text, p{  
    color:rgb(192, 172, 160)  
}
```

If you want to add a text shadow in that color use the text-shadow property, you can generate a text shadow directly with our [CSS Text Shadow Generator](#).

Here you see how black text with a 4 pixel rgb(192, 172, 160) colored shadow looks like.

```
.shadow{ text-shadow: 4px 4px 2px rgb(192, 172, 160) }
```

Border

The CSS property to change the border of an element to Yxy 43.2496, 0.3415, 0.3448 is called "border". The border property can be set on classes, ids or directly on the HTML element.

This example shows the color as border, it can be applied via the CSS property "border" or "border-color".

```
.border, #border, table{ border:4px solid rgb(192, 172, 160) }
```

If only the border color should be changed use the property border-color.

```
.border{ border-color:rgb(192, 172, 160) }
```

If you want to add a box shadow in that color use:

Here you see how a box with a 4 pixel rgb(192, 172, 160) colored shadow looks like.

```
.boxshadow{ -moz-box-shadow:4px 4px 4px  
4px rgb(192, 172, 160); -webkit-box-  
shadow:4px 4px 4px 4px rgb(192, 172, 160);  
box-shadow:4px 4px 4px 4px rgb(192, 172,  
160) }
```


Background

The CSS property to change the background color of an element to Yxy 43.2496, 0.3415, 0.3448 is called "background". The background property can be set on classes, ids or directly on the HTML element.

```
.background, #background, body{  
background: rgb(192, 172, 160) }
```

If only the background color should be changed can be used:

```
.background{ background-color: rgb(192,  
172, 160) }
```

This example shows the color as background, it is applied via the CSS property "background".

To optimize and compress your CSS code, you can use our [online CSS compressor and optimizer](#) based on csstidy. If you want to create a linear or radial gradient as background or border, check our [CSS Gradient Generator](#).

Hey! You found this booklet interesting? Support Converting Colors with the new Membership Option!

The pro membership hides all ads, plus gives you double the colors in the color bucket, and more awesome pro features!

[Learn more, Memberships starting at \\$2.50/m!](#)

**Follow me
on Twitter!**

@ConvertingColor