

Converting Colors

$Yxy(43.5662, 0.3339, 0.3282)$

Have a look what the booklet for
Yxy(43.5662, 0.3339, 0.3282)
contains.

Yxy(43.7065, 0.3338, 0.3278)	3
<i>Conversions</i>	4
<i>Details</i>	6
<i>Harmonies</i>	12
<i>Previews</i>	24
<i>Color Blindness Simulation</i>	27
<i>CSS Examples</i>	30

Color

Yxy(43.7065, 0.3338, 0.3278)

Conversions

Conversions Part 1

Format	Color
Hex	C3ABAC
RGB	195, 171, 172
RGB Percent	76%, 67%, 67%
CMY	0.2355, 0.3293, 0.3255
CMYK	0.00, 0.12, 0.12, 0.24
HSL	358°, 17%, 72%
HSV	358°, 12%, 76%
XYZ	44.5065, 43.7065, 45.1198
YIQ	178.2900, 13.9830, 5.3990

Conversions

Conversions Part 2

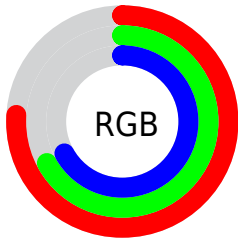
Format	Color
R _Y B	195, 171, 172
Decimal	12823468
CIE Lab	72.03, 8.82, 2.67
CIE LCh	72, 9.216, 16.852
Yxy	43.7065, 0.3338, 0.3278
Android (android.graphics.Color)	4291013548 (0xFFC3ABAC)
YUV	178.2900, -3.1010, 14.6547
Hunter-Lab	66.1109, 4.4739, 5.8130

Details

The Yxy color $43.7065, 0.3338, 0.3278$ is a light color, and the websafe version is hex $CC9999$. A complement of this color would be $51.5651, 0.2948, 0.3302$, and the grayscale version is $44.6923, 0.3127, 0.3290$.

A 20% lighter version of the original color is $80.6342, 0.3304, 0.3281$, and $20.2124, 0.3396, 0.3273$ is the 20% darker color. If you saturate the color by 10%, you get $36.2088, 0.3558, 0.3268$, and if you desaturate by 10%, it is $52.3955, 0.3162, 0.3288$.

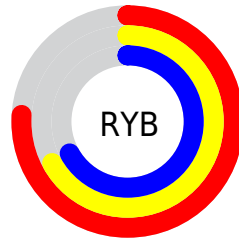
Distribution



Red (76%)

Green (67%)

Blue (67%)



Red (76%)

Yellow (67%)

Blue (67%)

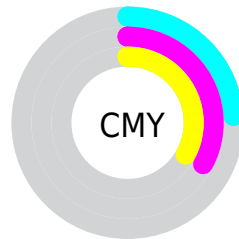


Cyan (0%)

Magenta (12%)

Yellow (12%)

Black (24%)



Cyan (24%)

Magenta (33%)


Yellow (33%)

Brightness & Saturation Gradients


These gradients show how the Yxy color 43.7065, 0.3338, 0.3278 changes by changing the brightness by 10 percent. The first figure shows a shift by +10% for each color and the second figure -10%.

Similar to the brightness gradients but the following saturation gradients show a change of the Yxy color 43.7065, 0.3338, 0.3278 by changing the saturation by 10% instead.


 43.7065, 0.3338,
0.3278

 43.7065, 0.3338,
0.3278


361.5092, 0.3231,
0.3285

 30.4398, 0.3365,
0.3276


 80.7759, 0.3299,
0.3281

 20.1727, 0.3401,
0.3273


105.3475, 0.3284,
0.3282

 12.5206, 0.3448,
0.3270


134.4561, 0.3272,
0.3282

 7.0993, 0.3516,
0.3264

168.4862, 0.3261,
0.3283

 3.5243, 0.3619,
0.3254

207.8222, 0.3252,
0.3284

 1.4112, 0.3797,
0.3234

252.8484, 0.3244,

 0.2249, 0.6025,

0.3284

0.3158

303.9493, 0.3237,
0.3285

0.0000, 0.0000,
0.0000

43.7065, 0.3338,
0.3278

43.7065, 0.3338,
0.3278

36.2088, 0.3558,
0.3268

52.3955, 0.3162,
0.3288

29.8449, 0.3830,
0.3257

62.3184, 0.3021,
0.3297

24.5616, 0.4164,
0.3247

73.5228, 0.2907,
0.3305

20.2987, 0.4562,
0.3240

86.0521, 0.2815,
0.3313

16.9904, 0.5011,
0.3237

90.3363, 0.2778,
0.3289

■ 14.5633, 0.5478,
0.3240

■ 12.9331, 0.5903,
0.3251

■ 11.9991, 0.6215,
0.3269

■ 11.6138, 0.6360,
0.3277

Harmonies

Analogous

The Analogous color harmony consists of three colors that are next to each other on the color wheel.



43.7065, 0.3232, 0.3170



43.7065, 0.3338, 0.3278



43.7065, 0.3386, 0.3391

Triad

The Triadic color harmony groups three colors that are evenly spaced from another and form a triangle on the color wheel.



43.7065, 0.3338, 0.3278



43.7065, 0.3150, 0.3497



43.7065, 0.2896, 0.3097

Complementary

The Complementary color scheme is a pair of colors which are on the opposite of each other on the color wheel.



43.7065, 0.3338, 0.3278



51.5651, 0.2948, 0.3302

Split Complementary

Split-complementary colors differ from the complementary color scheme. The scheme consists of three colors, the original color and two neighbors of the complement color.



43.7065, 0.2875, 0.3181



43.7065, 0.3338, 0.3278



43.7065, 0.3020, 0.3414

Square

The Square scheme is like the rectangle color scheme, but the four colors are evenly spaced on the color wheel.



43.7065, 0.3338, 0.3278



43.7065, 0.3276, 0.3521



43.7065, 0.2920, 0.3297



43.7065, 0.2977, 0.3067

Rectangle

The Rectangle color scheme consists of four colors that form a rectangle on the color wheel.



43.7065, 0.3338, 0.3278



43.7065, 0.3379, 0.3455



43.7065, 0.2920, 0.3297



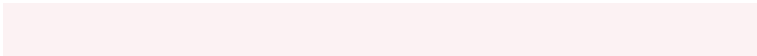
43.7065, 0.2881, 0.3120

Sweetspot

The Sweet Spot groups the original color and five complimentary colors.



43.7084, 0.3338, 0.3278



90.9505, 0.3191, 0.3286



44.5093, 0.3131, 0.2990



19.6456, 0.3203, 0.3285



0.0000, 0.0000, 0.0000



21.4041, 0.3127, 0.3290

Same Dimension

The Same Dimension uses a secret algorithm to generate beautiful new colors.



43.7084, 0.3338, 0.3278



74.1328, 0.3398, 0.3275



47.9081, 0.3329, 0.3428



10.0844, 0.3283, 0.3281



7.5552, 0.6350, 0.3272



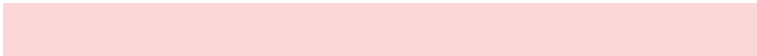
0.3288, 0.6166, 0.3171

Inverse Universe

The Inverse Universe completely reimagines the original color for something new.



43.7084, 0.3338, 0.3278



74.1328, 0.3398, 0.3275



46.9564, 0.2938, 0.3149



10.0844, 0.3283, 0.3281



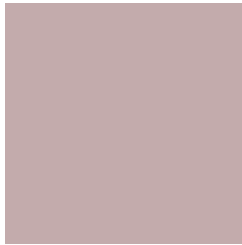
7.5552, 0.6350, 0.3272



0.3288, 0.6166, 0.3171

Previews

White Background



This preview shows how the Yxy color 43.7065, 0.3338, 0.3278 looks on a white background.

Color Contrast Check

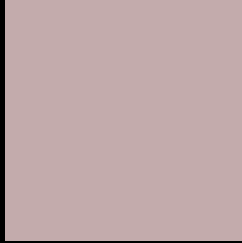
Large Text (above 18pt) WCAG AA × Fail

Any Text WCAG AA × Fail

Large Text (above 18pt) WCAG AAA × Fail

Any Text WCAG AAA × Fail

Black Background



This preview shows how the Yxy color 43.7065, 0.3338, 0.3278 looks on a black background.

Color Contrast Check

Large Text (above 18pt) WCAG AA ✓ Pass

Any Text WCAG AA ✓ Pass

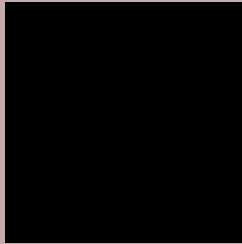
Large Text (above 18pt) WCAG AAA ✓ Pass

Any Text WCAG AAA ✓ Pass

If you want to check with other color combinations, try the [Color Contrast Checker](#).

Yxy 43.7065, 0.3338, 0.3278

Background



This preview shows how black text looks on a background with the Yxy color 43.7065, 0.3338, 0.3278.



This preview shows how white text looks on a background with the Yxy color 43.7065, 0.3338, 0.3278.

Color Blindness Simulation

Color vision deficiency is a very complex topic, and I could not describe the different causes any better than Wikipedia does, so if you want to learn more, you should check out their [article about color blindness](#).

Dichromacy



Original Color

43.7065, 0.3338, 0.3278

Protanopia

43.8491, 0.3171, 0.3303

Deuteranopia

43.7065, 0.3338, 0.3278



Tritanopia

43.5306, 0.3254, 0.3113

Trichromacy



Original Color

43.7065, 0.3338, 0.3278

Protanomaly

43.6424, 0.3226, 0.3290

Deuteranomaly

43.7065, 0.3338, 0.3278

Tritanomaly

43.7399, 0.3288, 0.3176

Monochromacy



Original Color

43.7065, 0.3338, 0.3278

Achromatopsia

44.5201, 0.3127, 0.3290

Achromatomaly

43.9849, 0.3199, 0.3277

CSS Examples

Text

The CSS property to change the color of the text to Yxy 43.7065, 0.3338, 0.3278 is called "color". The color property can be set on classes, ids or directly on the HTML element.

This example shows how text in the color `rgb(195, 171, 172)` looks like.

```
.text, #text, p{  
    color:rgb(195, 171, 172)  
}
```

If you want to add a text shadow in that color use the text-shadow property, you can generate a text shadow directly with our [CSS Text Shadow Generator](#).

Here you see how black text with a 4 pixel rgb(195, 171, 172) colored shadow looks like.

```
.shadow{ text-shadow: 4px 4px 2px rgb(195, 171, 172) }
```

Border

The CSS property to change the border of an element to Yxy 43.7065, 0.3338, 0.3278 is called "border". The border property can be set on classes, ids or directly on the HTML element.

This example shows the color as border, it can be applied via the CSS property "border" or "border-color".

```
.border, #border, table{ border:4px solid rgb(195, 171, 172) }
```

If only the border color should be changed use the property `border-color`.

```
.border{ border-color:rgb(195, 171, 172) }
```

If you want to add a box shadow in that color use:

Here you see how a box with a 4 pixel `rgb(195, 171, 172)` colored shadow looks like.

```
.boxshadow{ -moz-box-shadow:4px 4px 4px  
4px rgb(195, 171, 172); -webkit-box-  
shadow:4px 4px 4px 4px rgb(195, 171, 172);  
box-shadow:4px 4px 4px 4px rgb(195, 171,  
172) }
```


Background

The CSS property to change the background color of an element to Yxy 43.7065, 0.3338, 0.3278 is called "background". The background property can be set on classes, ids or directly on the HTML element.

```
.background, #background, body{  
background: rgb(195, 171, 172) }
```

If only the background color should be changed can be used:

```
.background{ background-color: rgb(195,  
171, 172) }
```

This example shows the color as background, it is applied via the CSS property "background".

To optimize and compress your CSS code, you can use our [online CSS compressor and optimizer](#) based on csstidy. If you want to create a linear or radial gradient as background or border, check our [CSS Gradient Generator](#).

Hey! You found this booklet interesting? Support Converting Colors with the new Membership Option!

The pro membership hides all ads, plus gives you double the colors in the color bucket, and more awesome pro features!

[Learn more, Memberships starting at \\$2.50/m!](#)

**Follow me
on Twitter!**

@ConvertingColor