

Converting Colors

$Yxy(43.6590, 0.3515, 0.3538)$

Have a look what the booklet for
Yxy(43.6590, 0.3515, 0.3538)
contains.

Yxy(43.5407, 0.3516, 0.3538)	3
<i>Conversions</i>	4
<i>Details</i>	6
<i>Harmonies</i>	12
<i>Previews</i>	24
<i>Color Blindness Simulation</i>	27
<i>CSS Examples</i>	30

Color

Yxy(43.5407, 0.3516, 0.3538)

Conversions

Conversions Part 1

Format	Color
Hex	C4AC99
RGB	196, 172, 153
RGB Percent	77%, 67%, 60%
CMY	0.2313, 0.3255, 0.4000
CMYK	0.00, 0.12, 0.22, 0.23
HSL	27°, 27%, 68%
HSV	27°, 22%, 77%
XYZ	43.2700, 43.5407, 36.2552
YIQ	177.0100, 20.4030, -0.8210

Conversions

Conversions Part 2

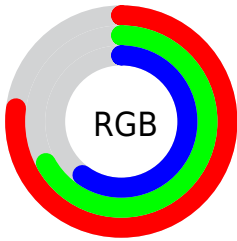
Format	Color
R _Y B	196, 187, 153
Decimal	12889241
CIE Lab	71.92, 5.67, 12.96
CIE LCh	72, 14.151, 66.374
Yxy	43.5407, 0.3516, 0.3538
Android (android.graphics.Color)	4291079321 (0xFFC4AC99)
YUV	177.0100, -11.8369, 16.6542
Hunter-Lab	65.9854, 1.5771, 13.6133

Details

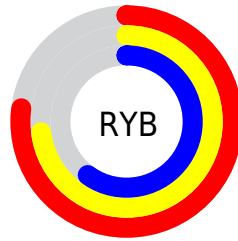
The Yxy color **43.5407, 0.3516, 0.3538** is a light color, and the websafe version is hex **CC9999**. A complement of this color would be **42.2051, 0.2786, 0.3028**, and the grayscale version is **44.0288, 0.3127, 0.3290**.

A 20% lighter version of the original color is **80.3258, 0.3446, 0.3494**, and **20.1430, 0.3632, 0.3610** is the 20% darker color. If you saturate the color by 10%, you get **38.9524, 0.3736, 0.3658**, and if you desaturate by 10%, it is **48.5823, 0.3324, 0.3421**.

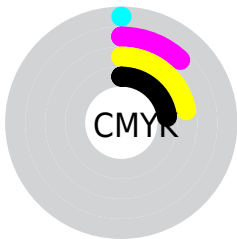
Distribution



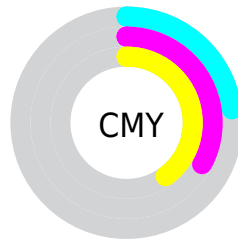
- Red (77%)
- Green (67%)
- Blue (60%)



- Red (77%)
- Yellow (73%)
- Blue (60%)



- Cyan (0%)
- Magenta (12%)
- Yellow (22%)
- Black (23%)




- Cyan (23%)
- Magenta (33%)
- Yellow (40%)

Brightness & Saturation Gradients


These gradients show how the Yxy color 43.5407, 0.3516, 0.3538 changes by changing the brightness by 10 percent. The first figure shows a shift by +10% for each color and the second figure -10%.


Similar to the brightness gradients but the following saturation gradients show a change of the Yxy color 43.5407, 0.3516, 0.3538 by changing the saturation by 10% instead.


 43.5407, 0.3516,
0.3538


 43.5407, 0.3516,
0.3538


360.8307, 0.3318,
0.3415

 30.3096, 0.3566,
0.3568


 80.5262, 0.3443,
0.3494

 20.0737, 0.3631,
0.3607


 105.0493, 0.3416,
0.3477

 12.4486, 0.3719,
0.3657


134.1052, 0.3394,
0.3463

 7.0500, 0.3842,
0.3727

168.0784, 0.3374,
0.3450

 3.4934, 0.4028,
0.3826

207.3531, 0.3357,
0.3440

 1.3944, 0.4415,
0.4046

252.3138, 0.3343,

 0.2126, 0.6156,

0.3431

0.3844

303.3449, 0.3330,
0.3422

0.0000, 0.0000,
0.0000

43.5407, 0.3516,
0.3538

43.5407, 0.3516,
0.3538

38.9524, 0.3736,
0.3658

48.5823, 0.3324,
0.3421

34.7980, 0.3985,
0.3776

54.0841, 0.3157,
0.3311

31.0654, 0.4259,
0.3885

60.0603, 0.3013,
0.3208

27.7396, 0.4554,
0.3976

66.5225, 0.2889,
0.3112

24.8043, 0.4856,
0.4034

73.4820, 0.2781,
0.3025

■ 22.2420, 0.5146,
0.4049

■ 79.9038, 0.2769,
0.3103

■ 20.0330, 0.5404,
0.4011

■ 86.4577, 0.2778,
0.3221

■ 18.4902, 0.5583,
0.3949

■ 90.4783, 0.2784,
0.3289

Harmonies

Analogous

The Analogous color harmony consists of three colors that are next to each other on the color wheel.



43.5407, 0.3513, 0.3382



43.5407, 0.3516, 0.3538



43.5407, 0.3411, 0.3634

Triad

The Triadic color harmony groups three colors that are evenly spaced from another and form a triangle on the color wheel.



43.5407, 0.3516, 0.3538



43.5407, 0.2856, 0.3365



43.5407, 0.3013, 0.2969

Complementary

The Complementary color scheme is a pair of colors which are on the opposite of each other on the color wheel.



43.5407, 0.3516, 0.3538



42.2051, 0.2786, 0.3028

Split Complementary

Split-complementary colors differ from the complementary color scheme. The scheme consists of three colors, the original color and two neighbors of the complement color.



43.5407, 0.2844, 0.2956



43.5407, 0.3516, 0.3538



43.5407, 0.2756, 0.3177

Square

The Square scheme is like the rectangle color scheme, but the four colors are evenly spaced on the color wheel.



43.5407, 0.3516, 0.3538



43.5407, 0.3028, 0.3537



43.5407, 0.2752, 0.3029



43.5407, 0.3218, 0.3061

Rectangle

The Rectangle color scheme consists of four colors that form a rectangle on the color wheel.



43.5407, 0.3516, 0.3538



43.5407, 0.3297, 0.3647



43.5407, 0.2752, 0.3029



43.5407, 0.2951, 0.2955

Sweetspot

The Sweet Spot groups the original color and five complimentary colors.



43.5427, 0.3516, 0.3538



92.7099, 0.3240, 0.3367



37.7063, 0.3326, 0.2976



19.7135, 0.3250, 0.3374



0.0000, 0.0000, 0.0000



21.4041, 0.3127, 0.3290

Same Dimension

The Same Dimension uses a secret algorithm to generate beautiful new colors.



43.5427, 0.3516, 0.3538



75.0594, 0.3611, 0.3591



52.2442, 0.3462, 0.3798



10.7939, 0.3278, 0.3392



12.0441, 0.5560, 0.3967



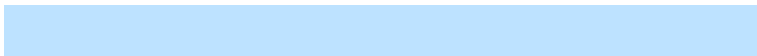
0.6575, 0.5180, 0.4269

Inverse Universe

The Inverse Universe completely reimagines the original color for something new.



42.2051, 0.2786, 0.3028



72.2349, 0.2715, 0.2968



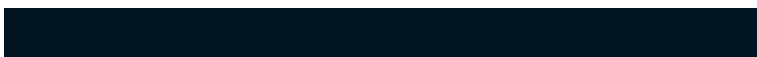
34.4867, 0.2764, 0.2726



10.6595, 0.2984, 0.3186



9.8185, 0.1831, 0.1793



0.5598, 0.1933, 0.2159

Previews

White Background



This preview shows how the Yxy color 43.5407, 0.3516, 0.3538 looks on a white background.

Color Contrast Check

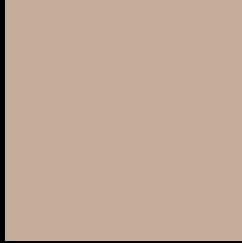
Large Text (above 18pt) WCAG AA × Fail

Any Text WCAG AA × Fail

Large Text (above 18pt) WCAG AAA × Fail

Any Text WCAG AAA × Fail

Black Background



This preview shows how the Yxy color 43.5407, 0.3516, 0.3538 looks on a black background.

Color Contrast Check

Large Text (above 18pt) WCAG AA ✓ Pass

Any Text WCAG AA ✓ Pass

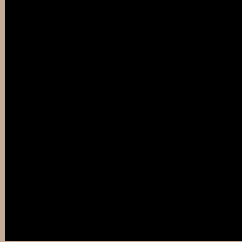
Large Text (above 18pt) WCAG AAA ✓ Pass

Any Text WCAG AAA ✓ Pass

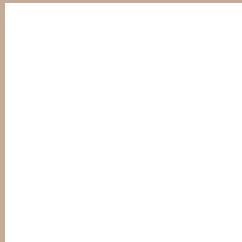
If you want to check with other color combinations, try the [Color Contrast Checker](#).

Yxy 43.5407, 0.3516, 0.3538

Background



This preview shows how black text looks on a background with the Yxy color 43.5407, 0.3516, 0.3538.



This preview shows how white text looks on a background with the Yxy color 43.5407, 0.3516, 0.3538.

Color Blindness Simulation

Color vision deficiency is a very complex topic, and I could not describe the different causes any better than Wikipedia does, so if you want to learn more, you should check out their [article about color blindness](#).

Dichromacy



Original Color

43.5407, 0.3516, 0.3538

Protanopia

43.6076, 0.3376, 0.3572

Deuteranopia

43.6059, 0.3579, 0.3508



Tritanopia

43.4836, 0.3300, 0.3127

Trichromacy



Original Color

43.5407, 0.3516, 0.3538

Protanomaly

43.6844, 0.3424, 0.3570

Deuteranomaly

43.7051, 0.3557, 0.3522

Tritanomaly

43.3220, 0.3379, 0.3265

Monochromacy



Original Color

43.5407, 0.3516, 0.3538

Achromatopsia

43.9657, 0.3127, 0.3290

Achromatomaly

43.6774, 0.3266, 0.3383

CSS Examples

Text

The CSS property to change the color of the text to Yxy 43.5407, 0.3516, 0.3538 is called "color". The color property can be set on classes, ids or directly on the HTML element.

This example shows how text in the color `rgb(196, 172, 153)` looks like.

```
.text, #text, p{  
    color:rgb(196, 172, 153)  
}
```

If you want to add a text shadow in that color use the text-shadow property, you can generate a text shadow directly with our [CSS Text Shadow Generator](#).

Here you see how black text with a 4 pixel rgb(196, 172, 153) colored shadow looks like.

```
.shadow{ text-shadow: 4px 4px 2px rgb(196, 172, 153) }
```

Border

The CSS property to change the border of an element to Yxy 43.5407, 0.3516, 0.3538 is called "border". The border property can be set on classes, ids or directly on the HTML element.

This example shows the color as border, it can be applied via the CSS property "border" or "border-color".

```
.border, #border, table{ border:4px solid rgb(196, 172, 153) }
```

If only the border color should be changed use the property `border-color`.

```
.border{ border-color:rgb(196, 172, 153) }
```

If you want to add a box shadow in that color use:

Here you see how a box with a 4 pixel `rgb(196, 172, 153)` colored shadow looks like.

```
.boxshadow{ -moz-box-shadow:4px 4px 4px  
4px rgb(196, 172, 153); -webkit-box-  
shadow:4px 4px 4px 4px rgb(196, 172, 153);  
box-shadow:4px 4px 4px 4px rgb(196, 172,  
153) }
```


Background

The CSS property to change the background color of an element to Yxy 43.5407, 0.3516, 0.3538 is called "background". The background property can be set on classes, ids or directly on the HTML element.

```
.background, #background, body{  
background: rgb(196, 172, 153) }
```

If only the background color should be changed can be used:

```
.background{ background-color: rgb(196,  
172, 153) }
```

This example shows the color as background, it is applied via the CSS property "background".

To optimize and compress your CSS code, you can use our [online CSS compressor and optimizer](#) based on csstidy. If you want to create a linear or radial gradient as background or border, check our [CSS Gradient Generator](#).

Hey! You found this booklet interesting? Support Converting Colors with the new Membership Option!

The pro membership hides all ads, plus gives you double the colors in the color bucket, and more awesome pro features!

[Learn more, Memberships starting at \\$2.50/m!](#)

**Follow me
on Twitter!**

@ConvertingColor