

Converting Colors

$Yxy(43.7033, 0.3398, 0.3474)$

Have a look what the booklet for
Yxy(43.7033, 0.3398, 0.3474)
contains.

Yxy(43.7573, 0.3392, 0.3475)	3
Conversions	4
Details	6
Harmonies	12
Previews	24
Color Blindness Simulation	27
CSS Examples	30

Color

Yxy(43.7573, 0.3392, 0.3475)

Conversions

Conversions Part 1

Format	Color
Hex	BEAEA0
RGB	190, 174, 160
RGB Percent	75%, 68%, 63%
CMY	0.2550, 0.3176, 0.3726
CMYK	0.00, 0.08, 0.16, 0.25
HSL	28°, 19%, 69%
HSV	28°, 16%, 75%
XYZ	42.7122, 43.7573, 39.4508
YIQ	177.1880, 14.0300, -0.9620

Conversions

Conversions Part 2

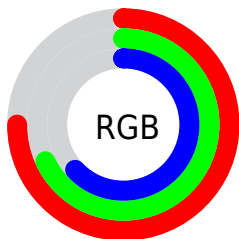
Format	Color
RYB	190, 186, 160
Decimal	12496544
CIELab	72.07, 3.38, 9.26
CIELCh	72, 9.856, 69.920
Yxy	43.7573, 0.3392, 0.3475
Android (android.graphics.Color)	4290686624 (0xFFBEAEA0)
YUV	177.1880, -8.4737, 11.2361
Hunter-Lab	66.1493, -0.5050, 10.9445

Details

The Yxy color $43.7573, 0.3392, 0.3475$ is a light color, and the websafe version is hex 999999 . A complement of this color would be $42.2269, 0.2884, 0.3098$, and the grayscale version is $44.1098, 0.3127, 0.3290$.

A 20% lighter version of the original color is $80.5377, 0.3338, 0.3434$, and $20.2574, 0.3459, 0.3525$ is the 20% darker color. If you saturate the color by 10%, you get $39.3808, 0.3592, 0.3600$, and if you desaturate by 10%, it is $48.5338, 0.3217, 0.3356$.

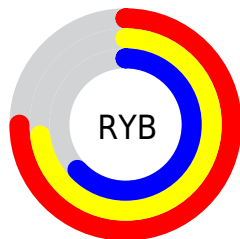
Distribution



Red (75%)

Green (68%)

Blue (63%)



Red (75%)

Yellow (73%)

Blue (63%)

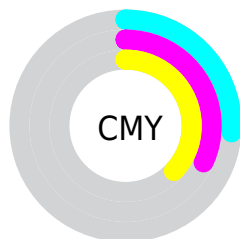


Cyan (0%)

Magenta (8%)

Yellow (16%)

Black (25%)



Cyan (26%)

Magenta (32%)

Yellow (37%)

Brightness & Saturation Gradients

These gradients show how the Yxy color 43.7573, 0.3392, 0.3475 changes by changing the brightness by 10 percent. The first figure shows a shift by +10% for each color and the second figure -10%.

Similar to the brightness gradients but the following saturation gradients show a change of the Yxy color 43.7573, 0.3392, 0.3475 by changing the saturation by 10% instead.

■ 43.7573, 0.3392,
0.3475

■ 43.7573, 0.3392,
0.3475

361.7170, 0.3258,
0.3383

■ 30.4798, 0.3426,
0.3498

■ 80.8524, 0.3343,
0.3441

■ 20.2030, 0.3470,
0.3528

■ 105.4388, 0.3324,
0.3429

■ 12.5427, 0.3530,
0.3567

134.5635, 0.3309,
0.3418

■ 7.1144, 0.3614,
0.3622

168.6111, 0.3296,
0.3409

■ 3.5338, 0.3742,
0.3703

207.9658, 0.3284,
0.3401

■ 1.4163, 0.3967,
0.3843

253.0121, 0.3274,

■ 0.2287, 0.5674,

0.3394

0.4326

304.1343, 0.3265,
0.3388

0.0000, 0.0000,
0.0000

43.7573, 0.3392,
0.3475

43.7573, 0.3392,
0.3475

39.3808, 0.3592,
0.3600

48.5338, 0.3217,
0.3356

35.3873, 0.3818,
0.3726

53.7151, 0.3066,
0.3244

31.7674, 0.4070,
0.3848

59.3131, 0.2934,
0.3140

28.5085, 0.4344,
0.3957

65.3376, 0.2820,
0.3044

25.5977, 0.4631,
0.4043

71.7979, 0.2721,
0.2956

■ 23.0207, 0.4917,
0.4092

■ 77.4194, 0.2732,
0.3069

■ 20.7619, 0.5185,
0.4094

■ 83.3694, 0.2742,
0.3180

■ 18.8034, 0.5415,
0.4041

■ 89.6541, 0.2752,
0.3288

■ 18.0566, 0.5505,
0.4011

■ 89.6845, 0.2752,
0.3289

Harmonies

Analogous

The Analogous color harmony consists of three colors that are next to each other on the color wheel.



43.7573, 0.3399, 0.3371



43.7573, 0.3392, 0.3475



43.7573, 0.3313, 0.3533

Triad

The Triadic color harmony groups three colors that are evenly spaced from another and form a triangle on the color wheel.



43.7573, 0.3392, 0.3475



43.7573, 0.2926, 0.3328



43.7573, 0.3065, 0.3069

Complementary

The Complementary color scheme is a pair of colors which are on the opposite of each other on the color wheel.



43.7573, 0.3392, 0.3475



42.2269, 0.2884, 0.3098

Split Complementary

Split-complementary colors differ from the complementary color scheme. The scheme consists of three colors, the original color and two neighbors of the complement color.



43.7573, 0.2942, 0.3054



43.7573, 0.3392, 0.3475



43.7573, 0.2863, 0.3200

Square

The Square scheme is like the rectangle color scheme, but the four colors are evenly spaced on the color wheel.



43.7573, 0.3392, 0.3475



43.7573, 0.3043, 0.3448



43.7573, 0.2869, 0.3100



43.7573, 0.3208, 0.3140

Rectangle

The Rectangle color scheme consists of four colors that form a rectangle on the color wheel.



43.7573, 0.3392, 0.3475



43.7573, 0.3231, 0.3535



43.7573, 0.2869, 0.3100



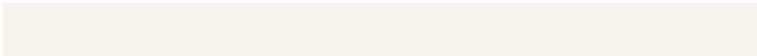
43.7573, 0.3020, 0.3057

Sweetspot

The Sweet Spot groups the original color and five complimentary colors.



43.7592, 0.3392, 0.3475



88.6057, 0.3206, 0.3348



39.2193, 0.3271, 0.3081



19.3156, 0.3218, 0.3356



97.7402, 0.3127, 0.3290



20.4902, 0.3127, 0.3290

Same Dimension

The Same Dimension uses a secret algorithm to generate beautiful new colors.



43.7592, 0.3392, 0.3475



76.4381, 0.3459, 0.3518



49.8689, 0.3363, 0.3664



10.2518, 0.3277, 0.3398



12.1638, 0.5484, 0.4028



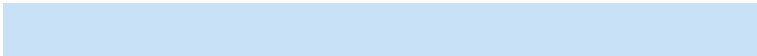
0.6074, 0.5097, 0.4335

Inverse Universe

The Inverse Universe completely reimagines the original color for something new.



42.2269, 0.2884, 0.3098



73.1223, 0.2828, 0.3050



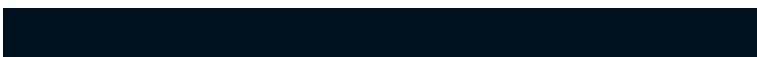
36.6788, 0.2875, 0.2887



10.0439, 0.2984, 0.3180



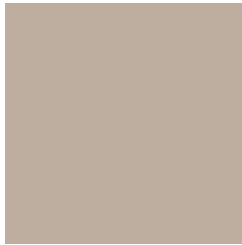
8.8435, 0.1808, 0.1707



0.4763, 0.1922, 0.2120

Previews

White Background



This preview shows how the Yxy color 43.7573, 0.3392, 0.3475 looks on a white background.

Color Contrast Check

Large Text (above 18pt) WCAG AA × Fail

Any Text WCAG AA × Fail

Large Text (above 18pt) WCAG AAA × Fail

Any Text WCAG AAA × Fail

Black Background



This preview shows how the Yxy color 43.7573, 0.3392, 0.3475 looks on a black background.

Color Contrast Check

Large Text (above 18pt) WCAG AA ✓ Pass

Any Text WCAG AA ✓ Pass

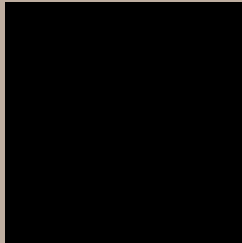
Large Text (above 18pt) WCAG AAA ✓ Pass

Any Text WCAG AAA ✓ Pass

If you want to check with other color combinations, try the [Color Contrast Checker](#).

Yxy 43.7573, 0.3392, 0.3475

Background



This preview shows how black text looks on a background with the Yxy color 43.7573, 0.3392, 0.3475.



This preview shows how white text looks on a background with the Yxy color 43.7573, 0.3392, 0.3475.

Color Blindness Simulation

Color vision deficiency is a very complex topic, and I could not describe the different causes any better than Wikipedia does, so if you want to learn more, you should check out their [article about color blindness](#).

Dichromacy



Original Color

43.7573, 0.3392, 0.3475

Protanopia

43.8142, 0.3324, 0.3491

Deuteranopia

43.6020, 0.3486, 0.3406



Tritanopia

43.5476, 0.3217, 0.3112

Trichromacy



Original Color

43.7573, 0.3392, 0.3475

Protanomaly

43.6723, 0.3344, 0.3477

Deuteranomaly

43.4348, 0.3446, 0.3420

Tritanomaly

43.4274, 0.3284, 0.3239

Monochromacy



Original Color

43.7573, 0.3392, 0.3475

Achromatopsia

43.9657, 0.3127, 0.3290

Achromatomaly

43.9360, 0.3222, 0.3357

CSS Examples

Text

The CSS property to change the color of the text to Yxy 43.7573, 0.3392, 0.3475 is called "color". The color property can be set on classes, ids or directly on the HTML element.

This example shows how text in the color `rgb(190, 174, 160)` looks like.

```
.text, #text, p{  
    color:rgb(190, 174, 160)  
}
```

If you want to add a text shadow in that color use the text-shadow property, you can generate a text shadow directly with our [CSS Text Shadow Generator](#).

Here you see how black text with a 4 pixel rgb(190, 174, 160) colored shadow looks like.

```
.shadow{ text-shadow: 4px 4px 2px rgb(190, 174, 160) }
```

Border

The CSS property to change the border of an element to Yxy 43.7573, 0.3392, 0.3475 is called "border". The border property can be set on classes, ids or directly on the HTML element.

This example shows the color as border, it can be applied via the CSS property "border" or "border-color".

```
.border, #border, table{ border:4px solid rgb(190, 174, 160) }
```

If only the border color should be changed use the property `border-color`.

```
.border{ border-color:rgb(190, 174, 160) }
```

If you want to add a box shadow in that color use:

Here you see how a box with a 4 pixel `rgb(190, 174, 160)` colored shadow looks like.

```
.boxshadow{ -moz-box-shadow:4px 4px 4px  
4px rgb(190, 174, 160); -webkit-box-  
shadow:4px 4px 4px 4px rgb(190, 174, 160);  
box-shadow:4px 4px 4px 4px rgb(190, 174,  
160) }
```


Background

The CSS property to change the background color of an element to Yxy 43.7573, 0.3392, 0.3475 is called "background". The background property can be set on classes, ids or directly on the HTML element.

```
.background, #background, body{  
background: rgb(190, 174, 160) }
```

If only the background color should be changed can be used:

```
.background{ background-color: rgb(190,  
174, 160) }
```

This example shows the color as background, it is applied via the CSS property "background".

To optimize and compress your CSS code, you can use our [online CSS compressor and optimizer](#) based on csstidy. If you want to create a linear or radial gradient as background or border, check our [CSS Gradient Generator](#).

Hey! You found this booklet interesting? Support Converting Colors with the new Membership Option!

The pro membership hides all ads, plus gives you double the colors in the color bucket, and more awesome pro features!

[Learn more, Memberships starting at \\$2.50/m!](#)

**Follow me
on Twitter!**

@ConvertingColor