

Converting Colors

$Yxy(43.7991, 0.3368, 0.3266)$

Have a look what the booklet for
Yxy(43.7991, 0.3368, 0.3266)
contains.

Yxy(43.7338, 0.3368, 0.3265)	3
Conversions	4
Details	6
Harmonies	12
Previews	24
Color Blindness Simulation	27
CSS Examples	30

Color

Yxy(43.7338, 0.3368, 0.3265)

Conversions

Conversions Part 1

Format	Color
Hex	C6AAAC
RGB	198, 170, 172
RGB Percent	78%, 67%, 67%
CMY	0.2235, 0.3333, 0.3254
CMYK	0.00, 0.14, 0.13, 0.22
HSL	356°, 20%, 72%
HSV	356°, 14%, 78%
XYZ	45.1135, 43.7338, 45.1001
YIQ	178.6000, 16.0460, 6.5580

Conversions

Conversions Part 2

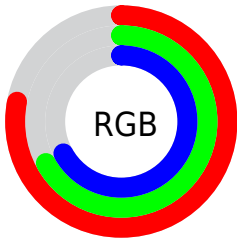
Format	Color
R _Y B	198, 170, 172
Decimal	13019820
CIE Lab	72.05, 10.50, 2.73
CIE LCh	72, 10.846, 14.551
Yxy	43.7338, 0.3368, 0.3265
Android (android.graphics.Color)	4291209900 (0xFFC6AAAC)
YUV	178.6000, -3.2538, 17.0138
Hunter-Lab	66.1315, 6.0385, 5.8578

Details

The Yxy color $43.7338, 0.3368, 0.3265$ is a light color, and the websafe version is hex $CC9999$. A complement of this color would be $52.9260, 0.2928, 0.3315$, and the grayscale version is $44.8687, 0.3127, 0.3290$.

A 20% lighter version of the original color is $80.6565, 0.3326, 0.3271$, and $20.2422, 0.3438, 0.3256$ is the 20% darker color. If you saturate the color by 10%, you get $36.2044, 0.3589, 0.3246$, and if you desaturate by 10%, it is $52.4829, 0.3190, 0.3283$.

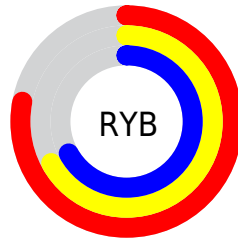
Distribution



Red (78%)

Green (67%)

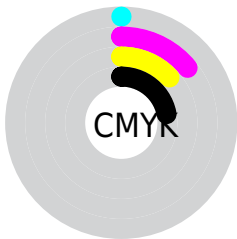
Blue (67%)



Red (78%)

Yellow (67%)

Blue (67%)

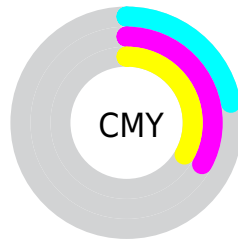


Cyan (0%)

Magenta (14%)

Yellow (13%)

Black (22%)



Cyan (22%)


Magenta (33%)

Yellow (33%)

Brightness & Saturation Gradients


These gradients show how the Yxy color 43.7338, 0.3368, 0.3265 changes by changing the brightness by 10 percent. The first figure shows a shift by +10% for each color and the second figure -10%.


Similar to the brightness gradients but the following saturation gradients show a change of the Yxy color 43.7338, 0.3368, 0.3265 by changing the saturation by 10% instead.


 43.7338, 0.3368,
0.3265

 43.7338, 0.3368,
0.3265


361.6209, 0.3246,
0.3279

 30.4613, 0.3399,
0.3261


 80.8170, 0.3323,
0.3270

 20.1890, 0.3439,
0.3256


105.3965, 0.3306,
0.3272

 12.5325, 0.3494,
0.3249


134.5138, 0.3292,
0.3274

 7.1074, 0.3571,
0.3239

168.5533, 0.3280,
0.3275

 3.5294, 0.3689,
0.3222

207.8993, 0.3270,
0.3276

 1.4140, 0.3892,
0.3190

252.9364, 0.3261,

 0.2270, 0.6247,

0.3277

0.3004

304.0487, 0.3253,
0.3278

0.0000, 0.0000,
0.0000

43.7338, 0.3368,
0.3265

43.7338, 0.3368,
0.3265

36.2044, 0.3589,
0.3246

52.4829, 0.3190,
0.3283

29.8351, 0.3864,
0.3227

62.4963, 0.3047,
0.3300

24.5699, 0.4198,
0.3210

73.8236, 0.2932,
0.3315

20.3460, 0.4594,
0.3196

86.5099, 0.2839,
0.3328

17.0942, 0.5038,
0.3190

90.7477, 0.2794,
0.3289

■ 14.7371, 0.5497,
0.3196

■ 13.1853, 0.5910,
0.3215

■ 12.3309, 0.6212,
0.3247

■ 12.0401, 0.6329,
0.3260

Harmonies

Analogous

The Analogous color harmony consists of three colors that are next to each other on the color wheel.



43.7338, 0.3239, 0.3141



43.7338, 0.3368, 0.3265



43.7338, 0.3431, 0.3398

Triad

The Triadic color harmony groups three colors that are evenly spaced from another and form a triangle on the color wheel.



43.7338, 0.3368, 0.3265



43.7338, 0.3166, 0.3539



43.7338, 0.2851, 0.3069

Complementary

The Complementary color scheme is a pair of colors which are on the opposite of each other on the color wheel.



43.7338, 0.3368, 0.3265



52.9260, 0.2928, 0.3315

Split Complementary

Split-complementary colors differ from the complementary color scheme. The scheme consists of three colors, the original color and two neighbors of the complement color.



43.7338, 0.2833, 0.3170



43.7338, 0.3368, 0.3265



43.7338, 0.3012, 0.3446

Square

The Square scheme is like the rectangle color scheme, but the four colors are evenly spaced on the color wheel.



43.7338, 0.3368, 0.3265



43.7338, 0.3312, 0.3561



43.7338, 0.2891, 0.3309



43.7338, 0.2941, 0.3029

Rectangle

The Rectangle color scheme consists of four colors that form a rectangle on the color wheel.



43.7338, 0.3368, 0.3265



43.7338, 0.3427, 0.3475



43.7338, 0.2891, 0.3309



43.7338, 0.2836, 0.3097

Sweetspot

The Sweet Spot groups the original color and five complimentary colors.



43.7358, 0.3368, 0.3265



93.0691, 0.3189, 0.3283



44.5197, 0.3123, 0.2942



19.6505, 0.3201, 0.3282



0.0000, 0.0000, 0.0000



21.4041, 0.3127, 0.3290

Same Dimension

The Same Dimension uses a secret algorithm to generate beautiful new colors.



43.7358, 0.3368, 0.3265



73.0666, 0.3432, 0.3259



48.2315, 0.3365, 0.3438



10.6491, 0.3278, 0.3274



7.8336, 0.6313, 0.3251



0.3753, 0.6022, 0.3091

Inverse Universe

The Inverse Universe completely reimagines the original color for something new.



43.7358, 0.3368, 0.3265



73.0666, 0.3432, 0.3259



47.8854, 0.2909, 0.3137



10.6491, 0.3278, 0.3274



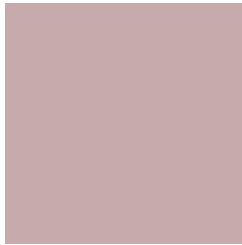
7.8336, 0.6313, 0.3251



0.3753, 0.6022, 0.3091

Previews

White Background



This preview shows how the Yxy color 43.7338, 0.3368, 0.3265 looks on a white background.

Color Contrast Check

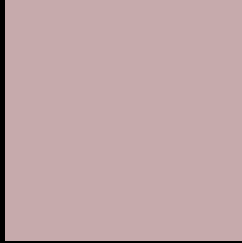
Large Text (above 18pt) WCAG AA × Fail

Any Text WCAG AA × Fail

Large Text (above 18pt) WCAG AAA × Fail

Any Text WCAG AAA × Fail

Black Background



This preview shows how the Yxy color 43.7338, 0.3368, 0.3265 looks on a black background.

Color Contrast Check

Large Text (above 18pt) WCAG AA ✓ Pass

Any Text WCAG AA ✓ Pass

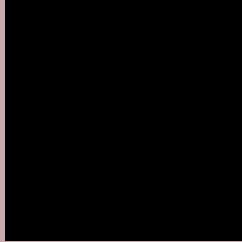
Large Text (above 18pt) WCAG AAA ✓ Pass

Any Text WCAG AAA ✓ Pass

If you want to check with other color combinations, try the [Color Contrast Checker](#).

Yxy 43.7338, 0.3368, 0.3265

Background



This preview shows how black text looks on a background with the Yxy color 43.7338, 0.3368, 0.3265.



This preview shows how white text looks on a background with the Yxy color 43.7338, 0.3368, 0.3265.

Color Blindness Simulation

Color vision deficiency is a very complex topic, and I could not describe the different causes any better than Wikipedia does, so if you want to learn more, you should check out their [article about color blindness](#).

Dichromacy



Original Color

43.7338, 0.3368, 0.3265

Protanopia

43.8491, 0.3171, 0.3303

Deuteranopia

43.8401, 0.3348, 0.3278



Tritanopia

43.5248, 0.3291, 0.3114

Trichromacy



Original Color

43.7338, 0.3368, 0.3265

Protanomaly

43.8929, 0.3244, 0.3290

Deuteranomaly

43.9747, 0.3357, 0.3278

Tritanomaly

43.7324, 0.3325, 0.3177

Monochromacy



Original Color

43.7338, 0.3368, 0.3265

Achromatopsia

45.0786, 0.3127, 0.3290

Achromatomaly

44.6244, 0.3216, 0.3290

CSS Examples

Text

The CSS property to change the color of the text to Yxy 43.7338, 0.3368, 0.3265 is called "color". The color property can be set on classes, ids or directly on the HTML element.

This example shows how text in the color `rgb(198, 170, 172)` looks like.

```
.text, #text, p{  
    color:rgb(198, 170, 172)  
}
```

If you want to add a text shadow in that color use the text-shadow property, you can generate a text shadow directly with our [CSS Text Shadow Generator](#).

Here you see how black text with a 4 pixel rgb(198, 170, 172) colored shadow looks like.

```
.shadow{ text-shadow: 4px 4px 2px rgb(198, 170, 172) }
```

Border

The CSS property to change the border of an element to Yxy 43.7338, 0.3368, 0.3265 is called "border". The border property can be set on classes, ids or directly on the HTML element.

This example shows the color as border, it can be applied via the CSS property "border" or "border-color".

```
.border, #border, table{ border:4px solid rgb(198, 170, 172) }
```

If only the border color should be changed use the property `border-color`.

```
.border{ border-color:rgb(198, 170, 172) }
```

If you want to add a box shadow in that color use:

Here you see how a box with a 4 pixel `rgb(198, 170, 172)` colored shadow looks like.

```
.boxshadow{ -moz-box-shadow:4px 4px 4px  
4px rgb(198, 170, 172); -webkit-box-  
shadow:4px 4px 4px 4px rgb(198, 170, 172);  
box-shadow:4px 4px 4px 4px rgb(198, 170,  
172) }
```


Background

The CSS property to change the background color of an element to Yxy 43.7338, 0.3368, 0.3265 is called "background". The background property can be set on classes, ids or directly on the HTML element.

```
.background, #background, body{  
background: rgb(198, 170, 172) }
```

If only the background color should be changed can be used:

```
.background{ background-color: rgb(198,  
170, 172) }
```

This example shows the color as background, it is applied via the CSS property "background".

To optimize and compress your CSS code, you can use our [online CSS compressor and optimizer](#) based on csstidy. If you want to create a linear or radial gradient as background or border, check our [CSS Gradient Generator](#).

Hey! You found this booklet interesting? Support Converting Colors with the new Membership Option!

The pro membership hides all ads, plus gives you double the colors in the color bucket, and more awesome pro features!

[Learn more, Memberships starting at \\$2.50/m!](#)

**Follow me
on Twitter!**

@ConvertingColor