

Converting Colors

$Yxy(43.8228, 0.3182, 0.3290)$

Have a look what the booklet for
Yxy(43.8228, 0.3182, 0.3290)
contains.

Yxy(43.7002, 0.3189, 0.3290)	3
<i>Conversions</i>	4
<i>Details</i>	6
<i>Harmonies</i>	12
<i>Previews</i>	24
<i>Color Blindness Simulation</i>	27
<i>CSS Examples</i>	30

Color

Yxy(43.7002, 0.3189, 0.3290)

Conversions

Conversions Part 1

Format	Color
Hex	B6AFAF
RGB	182, 175, 175
RGB Percent	71%, 69%, 69%
CMY	0.2863, 0.3137, 0.3137
CMYK	0.00, 0.04, 0.04, 0.29
HSL	360°, 5%, 70%
HSV	360°, 4%, 71%
XYZ	42.3586, 43.7002, 46.7685
YIQ	177.0930, 4.1720, 1.4840

Conversions

Conversions Part 2

Format	Color
R_{YB}	182, 175, 175
Decimal	11972527
CIE Lab	72.03, 2.49, 0.87
CIE LCh	72, 2.637, 19.263
Yxy	43.7002, 0.3189, 0.3290
Android (android.graphics.Color)	4290162607 (0xFFB6AFAF)
YUV	177.0930, -1.0318, 4.3034
Hunter-Lab	66.1061, -1.3088, 4.3280

Details

The Yxy color **43.7002, 0.3189, 0.3290** is a light color, and the websafe version is hex **999999**. A complement of this color would be **45.9430, 0.3068, 0.3290**, and the grayscale version is **44.0225, 0.3127, 0.3290**.

A 20% lighter version of the original color is **81.0421, 0.3181, 0.3300**, and **20.2631, 0.3201, 0.3290** is the 20% darker color. If you saturate the color by 10%, you get **36.4218, 0.3377, 0.3290**, and if you desaturate by 10%, it is **52.0332, 0.3038, 0.3290**.

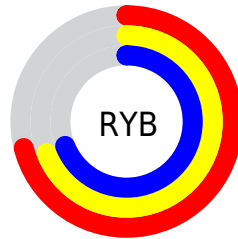
Distribution



Red (71%)

Green (69%)

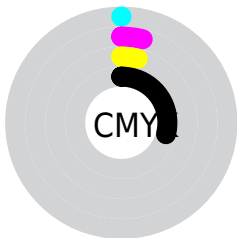
Blue (69%)



Red (71%)

Yellow (69%)

Blue (69%)

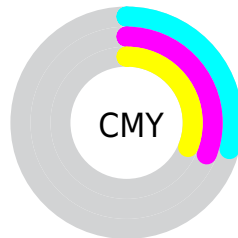


Cyan (0%)

Magenta (4%)

Yellow (4%)

Black (29%)



Cyan (29%)

Magenta (31%)

Yellow (31%)

Brightness & Saturation Gradients

These gradients show how the Yxy color 43.7002, 0.3189, 0.3290 changes by changing the brightness by 10 percent. The first figure shows a shift by +10% for each color and the second figure -10%.

Similar to the brightness gradients but the following saturation gradients show a change of the Yxy color 43.7002, 0.3189, 0.3290 by changing the saturation by 10% instead.

■ 43.7002, 0.3189,
0.3290

■ 43.7002, 0.3189,
0.3290

361.4835, 0.3158,
0.3290

■ 30.4349, 0.3197,
0.3290

■ 80.7664, 0.3178,
0.3290

■ 20.1689, 0.3207,
0.3290

105.3361, 0.3173,
0.3290

■ 12.5179, 0.3221,
0.3290

134.4428, 0.3170,
0.3290

■ 7.0974, 0.3241,
0.3289

168.4707, 0.3167,
0.3290

■ 3.5231, 0.3271,
0.3289

207.8043, 0.3164,
0.3290

■ 1.4105, 0.3322,
0.3288

252.8281, 0.3162,

■ 0.2245, 0.4018,

0.3290

0.3290

303.9263, 0.3160,
0.3290

0.0000, 0.0000,
0.0000

43.7002, 0.3189,
0.3290

43.7002, 0.3189,
0.3290

36.4218, 0.3377,
0.3290

52.0332, 0.3038,
0.3290

30.1506, 0.3612,
0.3290

61.4545, 0.2917,
0.3290

24.8440, 0.3904,
0.3291

72.0033, 0.2819,
0.3290

20.4542, 0.4261,
0.3291

83.7153, 0.2739,
0.3290

16.9291, 0.4681,
0.3292

88.6839, 0.2711,
0.3289

■ 14.2118, 0.5147,
0.3294

■ 12.2384, 0.5617,
0.3295

■ 10.9351, 0.6020,
0.3297

■ 10.2135, 0.6289,
0.3298

Harmonies

Analogous

The Analogous color harmony consists of three colors that are next to each other on the color wheel.



43.7002, 0.3160, 0.3258



43.7002, 0.3189, 0.3290



43.7002, 0.3201, 0.3322

Triad

The Triadic color harmony groups three colors that are evenly spaced from another and form a triangle on the color wheel.



43.7002, 0.3189, 0.3290



43.7002, 0.3131, 0.3347



43.7002, 0.3062, 0.3234

Complementary

The Complementary color scheme is a pair of colors which are on the opposite of each other on the color wheel.



43.7002, 0.3189, 0.3290



45.9430, 0.3068, 0.3290

Split Complementary

Split-complementary colors differ from the complementary color scheme. The scheme consists of three colors, the original color and two neighbors of the complement color.



43.7002, 0.3054, 0.3257



43.7002, 0.3189, 0.3290



43.7002, 0.3094, 0.3323

Square

The Square scheme is like the rectangle color scheme, but the four colors are evenly spaced on the color wheel.



43.7002, 0.3189, 0.3290



43.7002, 0.3168, 0.3356



43.7002, 0.3066, 0.3290



43.7002, 0.3087, 0.3225

Rectangle

The Rectangle color scheme consists of four colors that form a rectangle on the color wheel.



43.7002, 0.3189, 0.3290



43.7002, 0.3198, 0.3340



43.7002, 0.3066, 0.3290



43.7002, 0.3057, 0.3240

Sweetspot

The Sweet Spot groups the original color and five complimentary colors.



43.7021, 0.3189, 0.3290



83.3059, 0.3143, 0.3290



43.9691, 0.3130, 0.3198



18.4168, 0.3142, 0.3290



93.3107, 0.3127, 0.3290



18.7317, 0.3127, 0.3290

Same Dimension

The Same Dimension uses a secret algorithm to generate beautiful new colors.



43.7021, 0.3189, 0.3290



77.4924, 0.3210, 0.3290



45.0322, 0.3186, 0.3335



9.6441, 0.3219, 0.3290



7.0237, 0.6399, 0.3298



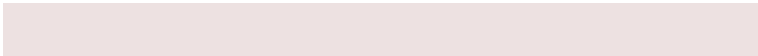
0.2477, 0.6389, 0.3294

Inverse Universe

The Inverse Universe completely reimagines the original color for something new.



43.7021, 0.3189, 0.3290



77.4924, 0.3210, 0.3290



44.5776, 0.3069, 0.3245



9.6441, 0.3219, 0.3290



7.0237, 0.6399, 0.3298



0.2477, 0.6389, 0.3294

Previews

White Background



This preview shows how the Yxy color 43.7002, 0.3189, 0.3290 looks on a white background.

Color Contrast Check

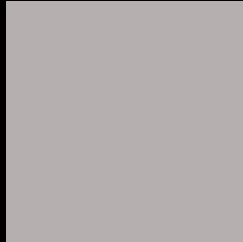
Large Text (above 18pt) WCAG AA × Fail

Any Text WCAG AA × Fail

Large Text (above 18pt) WCAG AAA × Fail

Any Text WCAG AAA × Fail

Black Background



This preview shows how the Yxy color 43.7002, 0.3189, 0.3290 looks on a black background.

Color Contrast Check

Large Text (above 18pt) WCAG AA ✓ Pass

Any Text WCAG AA ✓ Pass

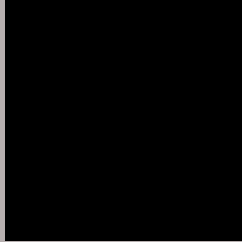
Large Text (above 18pt) WCAG AAA ✓ Pass

Any Text WCAG AAA ✓ Pass

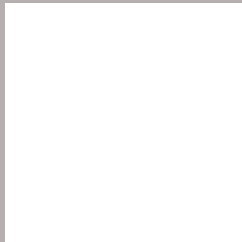
If you want to check with other color combinations, try the [Color Contrast Checker](#).

Yxy 43.7002, 0.3189, 0.3290

Background



This preview shows how black text looks on a background with the Yxy color 43.7002, 0.3189, 0.3290.



This preview shows how white text looks on a background with the Yxy color 43.7002, 0.3189, 0.3290.

Color Blindness Simulation

Color vision deficiency is a very complex topic, and I could not describe the different causes any better than Wikipedia does, so if you want to learn more, you should check out their [article about color blindness](#).

Dichromacy



Original Color

43.7002, 0.3189, 0.3290

Protanopia

43.8491, 0.3171, 0.3303

Deuteranopia

43.7297, 0.3294, 0.3226



Tritanopia

43.6653, 0.3109, 0.3108

Trichromacy



Original Color

43.7002, 0.3189, 0.3290

Protanomaly

43.9696, 0.3179, 0.3303

Deuteranomaly

43.5868, 0.3256, 0.3239

Tritanomaly

43.7583, 0.3133, 0.3172

Monochromacy



Original Color

43.7002, 0.3189, 0.3290

Achromatopsia

43.9657, 0.3127, 0.3290

Achromatomaly

43.7690, 0.3154, 0.3290

CSS Examples

Text

The CSS property to change the color of the text to Yxy 43.7002, 0.3189, 0.3290 is called "color". The color property can be set on classes, ids or directly on the HTML element.

This example shows how text in the color `rgb(182, 175, 175)` looks like.

```
.text, #text, p{  
    color:rgb(182, 175, 175)  
}
```

If you want to add a text shadow in that color use the text-shadow property, you can generate a text shadow directly with our [CSS Text Shadow Generator](#).

Here you see how black text with a 4 pixel rgb(182, 175, 175) colored shadow looks like.

```
.shadow{ text-shadow: 4px 4px 2px rgb(182, 175, 175) }
```

Border

The CSS property to change the border of an element to Yxy 43.7002, 0.3189, 0.3290 is called "border". The border property can be set on classes, ids or directly on the HTML element.

This example shows the color as border, it can be applied via the CSS property "border" or "border-color".

```
.border, #border, table{ border:4px solid rgb(182, 175, 175) }
```

If only the border color should be changed use the property border-color.

```
.border{ border-color:rgb(182, 175, 175) }
```

If you want to add a box shadow in that color use:

Here you see how a box with a 4 pixel rgb(182, 175, 175) colored shadow looks like.

```
.boxshadow{ -moz-box-shadow:4px 4px 4px  
4px rgb(182, 175, 175); -webkit-box-  
shadow:4px 4px 4px 4px rgb(182, 175, 175);  
box-shadow:4px 4px 4px 4px rgb(182, 175,  
175) }
```


Background

The CSS property to change the background color of an element to Yxy 43.7002, 0.3189, 0.3290 is called "background". The background property can be set on classes, ids or directly on the HTML element.

```
.background, #background, body{  
background: rgb(182, 175, 175) }
```

If only the background color should be changed can be used:

```
.background{ background-color: rgb(182,  
175, 175) }
```

This example shows the color as background, it is applied via the CSS property "background".

To optimize and compress your CSS code, you can use our [online CSS compressor and optimizer](#) based on csstidy. If you want to create a linear or radial gradient as background or border, check our [CSS Gradient Generator](#).

Hey! You found this booklet interesting? Support Converting Colors with the new Membership Option!

The pro membership hides all ads, plus gives you double the colors in the color bucket, and more awesome pro features!

[Learn more, Memberships starting at \\$2.50/m!](#)

**Follow me
on Twitter!**

@ConvertingColor