

Converting Colors

$Yxy(43.8398, 0.3817, 0.3742)$

Have a look what the booklet for
Yxy(43.8398, 0.3817, 0.3742)
contains.

Yxy(43.8806, 0.3812, 0.3743)	3
<i>Conversions</i>	4
<i>Details</i>	6
<i>Harmonies</i>	12
<i>Previews</i>	24
<i>Color Blindness Simulation</i>	27
<i>CSS Examples</i>	30

Color

Yxy(43.8806, 0.3812, 0.3743)

Conversions

Conversions Part 1

Format	Color
Hex	D0AA86
RGB	208, 170, 134
RGB Percent	82%, 67%, 53%
CMY	0.1843, 0.3333, 0.4746
CMYK	0.00, 0.18, 0.36, 0.18
HSL	29°, 44%, 67%
HSV	29°, 36%, 82%
XYZ	44.6895, 43.8806, 28.6637
YIQ	177.2580, 34.2040, -3.1400

Conversions

Conversions Part 2

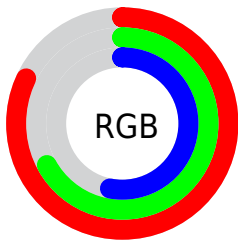
Format	Color
RYB	208, 204, 134
Decimal	13675142
CIELab	72.15, 8.85, 23.80
CIElCh	72, 25.392, 69.606
Yxy	43.8806, 0.3812, 0.3743
Android (android.graphics.Color)	4291865222 (0xFFD0AA86)
YUV	177.2580, -21.3262, 26.9607
Hunter-Lab	66.2424, 4.4982, 20.7144

Details

The Yxy color **43.8806, 0.3812, 0.3743** is a light color, and the websafe version is hex **CC9966**. A complement of this color would be **39.1195, 0.2561, 0.2786**, and the grayscale version is **44.2105, 0.3127, 0.3290**.

A 20% lighter version of the original color is **78.6983, 0.3605, 0.3678**, and **20.2724, 0.4006, 0.3862** is the 20% darker color. If you saturate the color by 10%, you get **39.5159, 0.4061, 0.3871**, and if you desaturate by 10%, it is **48.6887, 0.3588, 0.3611**.

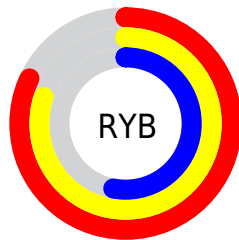
Distribution



Red (82%)

Green (67%)

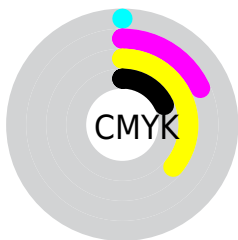
Blue (53%)



Red (82%)

Yellow (80%)

Blue (53%)

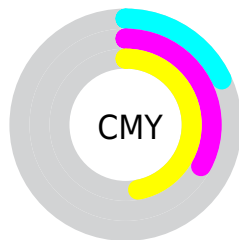


Cyan (0%)

Magenta (18%)

Yellow (36%)

Black (18%)



Cyan (18%)


Magenta (33%)


Yellow (47%)

Brightness & Saturation Gradients

These gradients show how the Yxy color 43.8806, 0.3812, 0.3743 changes by changing the brightness by 10 percent. The first figure shows a shift by +10% for each color and the second figure -10%.


Similar to the brightness gradients but the following saturation gradients show a change of the Yxy color 43.8806, 0.3812, 0.3743 by changing the saturation by 10% instead.


 43.8806, 0.3812,
0.3743


 43.8806, 0.3812,
0.3743

362.2208, 0.3466,
0.3523


 30.5767, 0.3899,
0.3795


 81.0380, 0.3686,
0.3665

 20.2767, 0.4010,
0.3859


 105.6603, 0.3638,
0.3635

 12.5963, 0.4156,
0.3941


 134.8242, 0.3598,
0.3610

 7.1512, 0.4357,
0.4045

168.9140, 0.3564,
0.3588

 3.5568, 0.4644,
0.4175

208.3142, 0.3534,
0.3568

 1.4289, 0.5400,
0.4600

253.4091, 0.3509,

 0.2379, 0.6502,

0.3551

0.3498

304.5832, 0.3486,
0.3536

0.0000, 0.0000,
0.0000

43.8806, 0.3812,
0.3743

43.8806, 0.3812,
0.3743

39.5159, 0.4061,
0.3871

48.6887, 0.3588,
0.3611

35.5741, 0.4330,
0.3985

53.9477, 0.3389,
0.3481

32.0418, 0.4611,
0.4075

59.6726, 0.3215,
0.3356

28.9024, 0.4889,
0.4128

65.8756, 0.3063,
0.3239

26.1374, 0.5148,
0.4132

72.5686, 0.2931,
0.3131

■ 23.7259, 0.5369,
0.4081

■ 79.5165, 0.2837,
0.3069

■ 22.7609, 0.5458,
0.4048

■ 85.7832, 0.2843,
0.3182

■ 92.1499, 0.2849,
0.3289

Harmonies

Analogous

The Analogous color harmony consists of three colors that are next to each other on the color wheel.



43.8806, 0.3835, 0.3470



43.8806, 0.3812, 0.3743



43.8806, 0.3599, 0.3916

Triad

The Triadic color harmony groups three colors that are evenly spaced from another and form a triangle on the color wheel.



43.8806, 0.3812, 0.3743



43.8806, 0.2620, 0.3382



43.8806, 0.2957, 0.2745

Complementary

The Complementary color scheme is a pair of colors which are on the opposite of each other on the color wheel.



43.8806, 0.3812, 0.3743



39.1195, 0.2561, 0.2786

Split Complementary

Split-complementary colors differ from the complementary color scheme. The scheme consists of three colors, the original color and two neighbors of the complement color.



43.8806, 0.2654, 0.2700



43.8806, 0.3812, 0.3743



43.8806, 0.2468, 0.3043

Square

The Square scheme is like the rectangle color scheme, but the four colors are evenly spaced on the color wheel.



43.8806, 0.3812, 0.3743



43.8806, 0.2908, 0.3714



43.8806, 0.2480, 0.2801



43.8806, 0.3324, 0.2915

Rectangle

The Rectangle color scheme consists of four colors that form a rectangle on the color wheel.



43.8806, 0.3812, 0.3743



43.8806, 0.3384, 0.3938



43.8806, 0.2480, 0.2801



43.8806, 0.2845, 0.2715

Sweetspot

The Sweet Spot groups the original color and five complimentary colors.



43.8827, 0.3812, 0.3743



89.4777, 0.3308, 0.3425



33.4441, 0.3535, 0.2814



18.8881, 0.3333, 0.3442



0.0000, 0.0000, 0.0000



21.4041, 0.3127, 0.3290

Same Dimension

The Same Dimension uses a secret algorithm to generate beautiful new colors.



43.8827, 0.3812, 0.3743



64.0295, 0.4007, 0.3845



59.6435, 0.3663, 0.4156



12.7443, 0.3279, 0.3403



14.3779, 0.5436, 0.4066



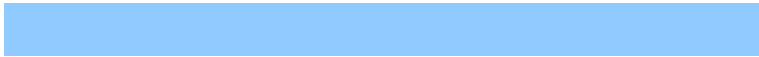
0.9625, 0.5149, 0.4294

Inverse Universe

The Inverse Universe completely reimagines the original color for something new.



39.1195, 0.2561, 0.2786



55.3431, 0.2434, 0.2651



27.0112, 0.2488, 0.2247



12.4069, 0.2982, 0.3174



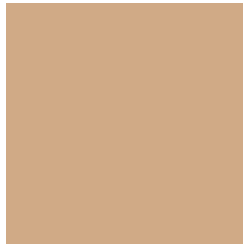
9.5573, 0.1787, 0.1634



0.6930, 0.1878, 0.1960

Previews

White Background



This preview shows how the Yxy color 43.8806, 0.3812, 0.3743 looks on a white background.

Color Contrast Check

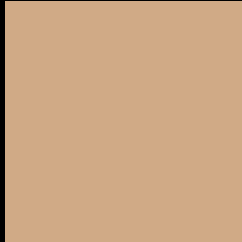
Large Text (above 18pt) WCAG AA × Fail

Any Text WCAG AA × Fail

Large Text (above 18pt) WCAG AAA × Fail

Any Text WCAG AAA × Fail

Black Background



This preview shows how the Yxy color 43.8806, 0.3812, 0.3743 looks on a black background.

Color Contrast Check

Large Text (above 18pt) WCAG AA ✓ Pass

Any Text WCAG AA ✓ Pass

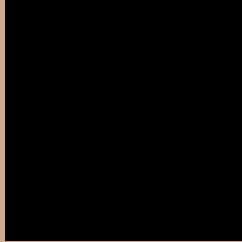
Large Text (above 18pt) WCAG AAA ✓ Pass

Any Text WCAG AAA ✓ Pass

If you want to check with other color combinations, try the [Color Contrast Checker](#).

Yxy 43.8806, 0.3812, 0.3743

Background



This preview shows how black text looks on a background with the Yxy color 43.8806, 0.3812, 0.3743.



This preview shows how white text looks on a background with the Yxy color 43.8806, 0.3812, 0.3743.

Color Blindness Simulation

Color vision deficiency is a very complex topic, and I could not describe the different causes any better than Wikipedia does, so if you want to learn more, you should check out their [article about color blindness](#).

Dichromacy



Original Color

43.8806, 0.3812, 0.3743

Protanopia

44.0692, 0.3576, 0.3822

Deuteranopia

43.8806, 0.3812, 0.3743



Tritanopia

43.8714, 0.3475, 0.3133

Trichromacy



Original Color

43.8806, 0.3812, 0.3743

Protanomaly

43.7854, 0.3662, 0.3786

Deuteranomaly

43.8806, 0.3812, 0.3743

Tritanomaly

43.6945, 0.3602, 0.3353

Monochromacy



Original Color

43.8806, 0.3812, 0.3743

Achromatopsia

43.9657, 0.3127, 0.3290

Achromatomaly

43.5367, 0.3365, 0.3463

CSS Examples

Text

The CSS property to change the color of the text to Yxy 43.8806, 0.3812, 0.3743 is called "color". The color property can be set on classes, ids or directly on the HTML element.

This example shows how text in the color `rgb(208, 170, 134)` looks like.

```
.text, #text, p{  
    color:rgb(208, 170, 134)  
}
```

If you want to add a text shadow in that color use the text-shadow property, you can generate a text shadow directly with our [CSS Text Shadow Generator](#).

Here you see how black text with a 4 pixel rgb(208, 170, 134) colored shadow looks like.

```
.shadow{ text-shadow: 4px 4px 2px rgb(208, 170, 134) }
```

Border

The CSS property to change the border of an element to Yxy 43.8806, 0.3812, 0.3743 is called "border". The border property can be set on classes, ids or directly on the HTML element.

This example shows the color as border, it can be applied via the CSS property "border" or "border-color".

```
.border, #border, table{ border:4px solid rgb(208, 170, 134) }
```

If only the border color should be changed use the property `border-color`.

```
.border{ border-color:rgb(208, 170, 134) }
```

If you want to add a box shadow in that color use:

Here you see how a box with a 4 pixel `rgb(208, 170, 134)` colored shadow looks like.

```
.boxshadow{ -moz-box-shadow:4px 4px 4px  
4px rgb(208, 170, 134); -webkit-box-  
shadow:4px 4px 4px 4px rgb(208, 170, 134);  
box-shadow:4px 4px 4px 4px rgb(208, 170,  
134) }
```


Background

The CSS property to change the background color of an element to Yxy 43.8806, 0.3812, 0.3743 is called "background". The background property can be set on classes, ids or directly on the HTML element.

```
.background, #background, body{  
background: rgb(208, 170, 134) }
```

If only the background color should be changed can be used:

```
.background{ background-color: rgb(208,  
170, 134) }
```

This example shows the color as background, it is applied via the CSS property "background".

To optimize and compress your CSS code, you can use our [online CSS compressor and optimizer](#) based on csstidy. If you want to create a linear or radial gradient as background or border, check our [CSS Gradient Generator](#).

Hey! You found this booklet interesting? Support Converting Colors with the new Membership Option!

The pro membership hides all ads, plus gives you double the colors in the color bucket, and more awesome pro features!

[Learn more, Memberships starting at \\$2.50/m!](#)

**Follow me
on Twitter!**

@ConvertingColor