

Converting Colors

$Y_{xy}(43.9493, 0.3172, 0.3274)$

Have a look what the booklet for
Yxy(43.9493, 0.3172, 0.3274)
contains.

Yxy(44.1701, 0.3172, 0.3277)	3
Conversions	4
Details	6
Harmonies	12
Previews	24
Color Blindness Simulation	27
CSS Examples	30

Color

Yxy(44.1701, 0.3172, 0.3277)

Conversions

Conversions Part 1

Format	Color
Hex	B6B0B1
RGB	182, 176, 177
RGB Percent	71%, 69%, 69%
CMY	0.2862, 0.3098, 0.3059
CMYK	0.00, 0.03, 0.03, 0.29
HSL	350°, 4%, 70%
HSV	350°, 3%, 71%
XYZ	42.7548, 44.1701, 47.8633
YIQ	177.9080, 3.2550, 1.5830

Conversions

Conversions Part 2

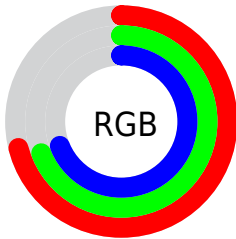
Format	Color
RYB	182, 176, 177
Decimal	11972785
CIELab	72.34, 2.32, 0.24
CIElCh	72, 2.334, 5.992
Yxy	44.1701, 0.3172, 0.3277
Android (android.graphics.Color)	4290162865 (0xFFB6B0B1)
YUV	177.9080, -0.4476, 3.5887
Hunter-Lab	66.4606, -1.4750, 3.8232

Details

The Yxy color **44.1701, 0.3172, 0.3277** is a light color, and the websafe version is hex **999999**. A complement of this color would be **46.0303, 0.3084, 0.3303**, and the grayscale version is **44.4726, 0.3127, 0.3290**.

A 20% lighter version of the original color is **81.7736, 0.3162, 0.3280**, and **20.5377, 0.3188, 0.3290** is the 20% darker color. If you saturate the color by 10%, you get **36.9336, 0.3329, 0.3236**, and if you desaturate by 10%, it is **52.4349, 0.3045, 0.3315**.

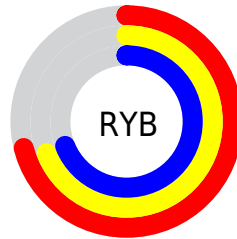
Distribution



Red (71%)

Green (69%)

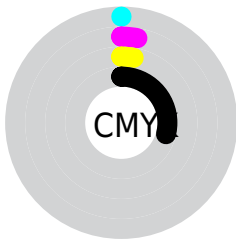
Blue (69%)



Red (71%)

Yellow (69%)

Blue (69%)

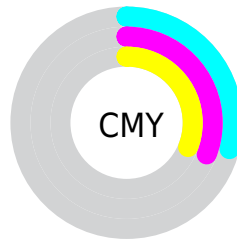


Cyan (0%)

Magenta (3%)

Yellow (3%)

Black (29%)



Cyan (29%)

Magenta (31%)

Yellow (31%)

Brightness & Saturation Gradients

These gradients show how the Yxy color 44.1701, 0.3172, 0.3277 changes by changing the brightness by 10 percent. The first figure shows a shift by +10% for each color and the second figure -10%.

Similar to the brightness gradients but the following saturation gradients show a change of the Yxy color 44.1701, 0.3172, 0.3277 by changing the saturation by 10% instead.

■ 44.1701, 0.3172,
0.3277

■ 44.1701, 0.3172,
0.3277

363.4020, 0.3149,
0.3284

■ 30.8043, 0.3178,
0.3275

■ 81.4736, 0.3164,
0.3279

■ 20.4498, 0.3185,
0.3273

106.1801, 0.3161,
0.3280

■ 12.7225, 0.3195,
0.3270

135.4356, 0.3158,
0.3281

■ 7.2377, 0.3209,
0.3266

169.6245, 0.3156,
0.3282

■ 3.6112, 0.3230,
0.3260

209.1312, 0.3154,
0.3282

■ 1.4585, 0.3267,
0.3249

254.3401, 0.3152,

■ 0.2593, 0.3662,

0.3283

0.3133

305.6355, 0.3151,
0.3283

0.0000, 0.0000,
0.0000

44.1701, 0.3172,
0.3277

44.1701, 0.3172,
0.3277

36.9336, 0.3329,
0.3236

52.4349, 0.3045,
0.3315

30.6798, 0.3522,
0.3192

61.7602, 0.2943,
0.3350

25.3678, 0.3760,
0.3148

72.1836, 0.2859,
0.3382

20.9520, 0.4051,
0.3105

83.7395, 0.2790,
0.3411

17.3827, 0.4395,
0.3069

88.5575, 0.2721,
0.3311

■ 14.6055, 0.4790,
0.3046

■ 88.6872, 0.2711,
0.3289

■ 12.5596, 0.5213,
0.3045

■ 11.1753, 0.5625,
0.3071

■ 10.3694, 0.5974,
0.3126

Harmonies

Analogous

The Analogous color harmony consists of three colors that are next to each other on the color wheel.



44.1701, 0.3142, 0.3251



44.1701, 0.3172, 0.3277



44.1701, 0.3190, 0.3306

Triad

The Triadic color harmony groups three colors that are evenly spaced from another and form a triangle on the color wheel.



44.1701, 0.3172, 0.3277



44.1701, 0.3146, 0.3346



44.1701, 0.3064, 0.3248

Complementary

The Complementary color scheme is a pair of colors which are on the opposite of each other on the color wheel.



44.1701, 0.3172, 0.3277



46.0303, 0.3084, 0.3303

Split Complementary

Split-complementary colors differ from the complementary color scheme. The scheme consists of three colors, the original color and two neighbors of the complement color.



44.1701, 0.3065, 0.3273



44.1701, 0.3172, 0.3277



44.1701, 0.3112, 0.3330

Square

The Square scheme is like the rectangle color scheme, but the four colors are evenly spaced on the color wheel.



44.1701, 0.3172, 0.3277



44.1701, 0.3174, 0.3346



44.1701, 0.3083, 0.3303



44.1701, 0.3080, 0.3234

Rectangle

The Rectangle color scheme consists of four colors that form a rectangle on the color wheel.



44.1701, 0.3172, 0.3277



44.1701, 0.3192, 0.3324



44.1701, 0.3083, 0.3303



44.1701, 0.3063, 0.3256

Sweetspot

The Sweet Spot groups the original color and five complimentary colors.



44.1720, 0.3172, 0.3277



83.3283, 0.3141, 0.3286



44.2544, 0.3122, 0.3211



18.4215, 0.3140, 0.3286



93.3107, 0.3127, 0.3290



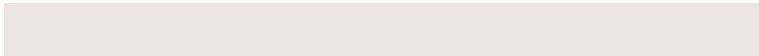
18.7317, 0.3127, 0.3290

Same Dimension

The Same Dimension uses a secret algorithm to generate beautiful new colors.



44.1720, 0.3172, 0.3277



79.0025, 0.3183, 0.3274



44.9249, 0.3178, 0.3317



9.8195, 0.3191, 0.3272



7.0963, 0.6135, 0.3153



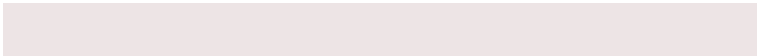
0.2577, 0.5499, 0.2803

Inverse Universe

The Inverse Universe completely reimagines the original color for something new.



44.1720, 0.3172, 0.3277



79.0025, 0.3183, 0.3274



45.2555, 0.3077, 0.3263



9.8195, 0.3191, 0.3272



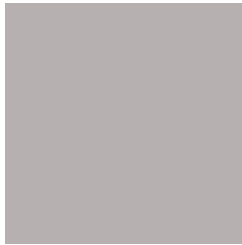
7.0963, 0.6135, 0.3153



0.2577, 0.5499, 0.2803

Previews

White Background



This preview shows how the Yxy color 44.1701, 0.3172, 0.3277 looks on a white background.

Color Contrast Check

Large Text (above 18pt) WCAG AA × Fail

Any Text WCAG AA × Fail

Large Text (above 18pt) WCAG AAA × Fail

Any Text WCAG AAA × Fail

Black Background



This preview shows how the Yxy color 44.1701, 0.3172, 0.3277 looks on a black background.

Color Contrast Check

Large Text (above 18pt) WCAG AA ✓ Pass

Any Text WCAG AA ✓ Pass

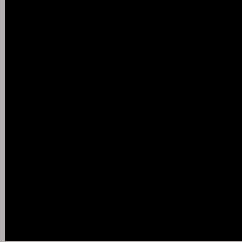
Large Text (above 18pt) WCAG AAA ✓ Pass

Any Text WCAG AAA ✓ Pass

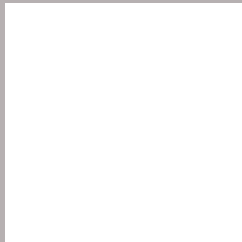
If you want to check with other color combinations, try the [Color Contrast Checker](#).

Yxy 44.1701, 0.3172, 0.3277

Background



This preview shows how black text looks on a background with the Yxy color 44.1701, 0.3172, 0.3277.

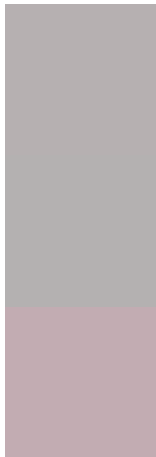


This preview shows how white text looks on a background with the Yxy color 44.1701, 0.3172, 0.3277.

Color Blindness Simulation

Color vision deficiency is a very complex topic, and I could not describe the different causes any better than Wikipedia does, so if you want to learn more, you should check out their [article about color blindness](#).

Dichromacy



Original Color

44.1701, 0.3172, 0.3277

Protanopia

44.3219, 0.3153, 0.3290

Deuteranopia

44.1887, 0.3275, 0.3214



Tritanopia

44.0933, 0.3101, 0.3109

Trichromacy



Original Color

44.1701, 0.3172, 0.3277

Protanomaly

44.4424, 0.3162, 0.3290

Deuteranomaly

44.0486, 0.3238, 0.3226

Tritanomaly

44.1879, 0.3124, 0.3173

Monochromacy



Original Color

44.1701, 0.3172, 0.3277

Achromatopsia

44.5201, 0.3127, 0.3290

Achromatomaly

44.2423, 0.3137, 0.3277

CSS Examples

Text

The CSS property to change the color of the text to Yxy 44.1701, 0.3172, 0.3277 is called "color". The color property can be set on classes, ids or directly on the HTML element.

This example shows how text in the color `rgb(182, 176, 177)` looks like.

```
.text, #text, p{  
    color:rgb(182, 176, 177)  
}
```

If you want to add a text shadow in that color use the text-shadow property, you can generate a text shadow directly with our [CSS Text Shadow Generator](#).

Here you see how black text with a 4 pixel rgb(182, 176, 177) colored shadow looks like.

```
.shadow{ text-shadow: 4px 4px 2px rgb(182, 176, 177) }
```

Border

The CSS property to change the border of an element to Yxy 44.1701, 0.3172, 0.3277 is called "border". The border property can be set on classes, ids or directly on the HTML element.

This example shows the color as border, it can be applied via the CSS property "border" or "border-color".

```
.border, #border, table{ border:4px solid rgb(182, 176, 177) }
```

If only the border color should be changed use the property `border-color`.

```
.border{ border-color:rgb(182, 176, 177) }
```

If you want to add a box shadow in that color use:

Here you see how a box with a 4 pixel `rgb(182, 176, 177)` colored shadow looks like.

```
.boxshadow{ -moz-box-shadow:4px 4px 4px 4px rgb(182, 176, 177); -webkit-box-shadow:4px 4px 4px 4px rgb(182, 176, 177); box-shadow:4px 4px 4px 4px rgb(182, 176, 177) }
```


Background

The CSS property to change the background color of an element to Yxy 44.1701, 0.3172, 0.3277 is called "background". The background property can be set on classes, ids or directly on the HTML element.

```
.background, #background, body{  
background: rgb(182, 176, 177) }
```

If only the background color should be changed can be used:

```
.background{ background-color: rgb(182,  
176, 177) }
```

This example shows the color as background, it is applied via the CSS property "background".

To optimize and compress your CSS code, you can use our [online CSS compressor and optimizer](#) based on csstidy. If you want to create a linear or radial gradient as background or border, check our [CSS Gradient Generator](#).

Hey! You found this booklet interesting? Support Converting Colors with the new Membership Option!

The pro membership hides all ads, plus gives you double the colors in the color bucket, and more awesome pro features!

[Learn more, Memberships starting at \\$2.50/m!](#)

**Follow me
on Twitter!**

@ConvertingColor