

Converting Colors

$Yxy(43.9626, 0.3099, 0.3193)$

Have a look what the booklet for
Yxy(43.9626, 0.3099, 0.3193)
contains.

Yxy(44.0533, 0.3097, 0.3198)	3
<i>Conversions</i>	4
<i>Details</i>	6
<i>Harmonies</i>	12
<i>Previews</i>	24
<i>Color Blindness Simulation</i>	27
<i>CSS Examples</i>	30

Color

Yxy(44.0533, 0.3097, 0.3198)

Conversions

Conversions Part 1

Format	Color
Hex	B3B0B7
RGB	179, 176, 183
RGB Percent	70%, 69%, 72%
CMY	0.2980, 0.3098, 0.2825
CMYK	0.02, 0.04, 0.00, 0.28
HSL	266°, 5%, 70%
HSV	266°, 4%, 72%
XYZ	42.6620, 44.0533, 51.0374
YIQ	177.6950, -0.4590, 2.8130

Conversions

Conversions Part 2

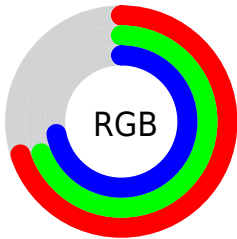
Format	Color
RYB	179, 176, 183
Decimal	11776183
CIELab	72.26, 2.38, -3.18
CIELCh	72, 3.972, 306.805
Yxy	44.0533, 0.3097, 0.3198
Android (android.graphics.Color)	4289966263 (0xFFB3B0B7)
YUV	177.6950, 2.6154, 1.1445
Hunter-Lab	66.3727, -1.4187, 0.8697

Details

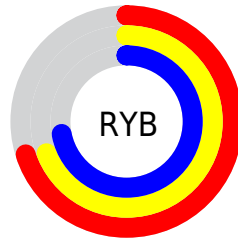
The Yxy color **44.0533, 0.3097, 0.3198** is a light color, and the websafe version is hex **999999**. A complement of this color would be **46.6884, 0.3157, 0.3382**, and the grayscale version is **44.3382, 0.3127, 0.3290**.

A 20% lighter version of the original color is **81.6074, 0.3104, 0.3218**, and **20.4626, 0.3084, 0.3181** is the 20% darker color. If you saturate the color by 10%, you get **36.1637, 0.3009, 0.2941**, and if you desaturate by 10%, it is **53.0073, 0.3172, 0.3432**.

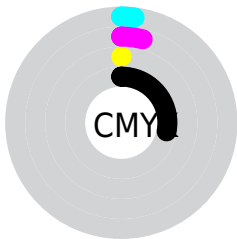
Distribution



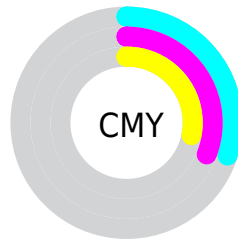
- Red (70%)
- Green (69%)
- Blue (72%)



- Red (70%)
- Yellow (69%)
- Blue (72%)



- Cyan (2%)
- Magenta (4%)
- Yellow (0%)
- Black (28%)



- Cyan (30%)
- Magenta (31%)
- Yellow (28%)

Brightness & Saturation Gradients

These gradients show how the Yxy color 44.0533, 0.3097, 0.3198 changes by changing the brightness by 10 percent. The first figure shows a shift by +10% for each color and the second figure -10%.

Similar to the brightness gradients but the following saturation gradients show a change of the Yxy color 44.0533, 0.3097, 0.3198 by changing the saturation by 10% instead.

■ 44.0533, 0.3097,
0.3198

■ 44.0533, 0.3097,
0.3198

362.9257, 0.3112,
0.3244

■ 30.7124, 0.3093,
0.3186

■ 81.2979, 0.3103,
0.3215

■ 20.3800, 0.3088,
0.3171

105.9705, 0.3105,
0.3221

■ 12.6715, 0.3081,
0.3151

135.1890, 0.3107,
0.3227

■ 7.2028, 0.3071,
0.3123

169.3380, 0.3108,
0.3231

■ 3.5892, 0.3056,
0.3080

208.8017, 0.3109,
0.3235

■ 1.4465, 0.3031,
0.3009

253.9647, 0.3110,

■ 0.2507, 0.2843,

0.3239

0.2405

305.2112, 0.3111,
0.3242

0.0000, 0.0000,
0.0000

44.0533, 0.3097,
0.3198

44.0533, 0.3097,
0.3198

36.1637, 0.3009,
0.2941

53.0073, 0.3172,
0.3432

29.2923, 0.2906,
0.2662

63.0582, 0.3236,
0.3644

23.3980, 0.2790,
0.2368

74.2443, 0.3290,
0.3832

18.4345, 0.2661,
0.2065

86.6002, 0.3334,
0.4000

14.3517, 0.2522,
0.1765

91.9293, 0.3394,
0.4038

■ 11.0947, 0.2376,
0.1482

■ 93.7120, 0.3464,
0.4021

■ 8.6021, 0.2230,
0.1233

■ 95.5993, 0.3534,
0.4004

■ 6.8035, 0.2092,
0.1031

■ 96.1977, 0.3556,
0.3998

■ 5.6147, 0.1968,
0.0887

Harmonies

Analogous

The Analogous color harmony consists of three colors that are next to each other on the color wheel.



44.0533, 0.3048, 0.3195



44.0533, 0.3097, 0.3198



44.0533, 0.3154, 0.3225

Triad

The Triadic color harmony groups three colors that are evenly spaced from another and form a triangle on the color wheel.



44.0533, 0.3097, 0.3198



44.0533, 0.3235, 0.3362



44.0533, 0.3050, 0.3311

Complementary

The Complementary color scheme is a pair of colors which are on the opposite of each other on the color wheel.



44.0533, 0.3097, 0.3198



46.6884, 0.3157, 0.3382

Split Complementary

Split-complementary colors differ from the complementary color scheme. The scheme consists of three colors, the original color and two neighbors of the complement color.



44.0533, 0.3100, 0.3357



44.0533, 0.3097, 0.3198



44.0533, 0.3206, 0.3386

Square

The Square scheme is like the rectangle color scheme, but the four colors are evenly spaced on the color wheel.



44.0533, 0.3097, 0.3198



44.0533, 0.3234, 0.3319



44.0533, 0.3157, 0.3384



44.0533, 0.3021, 0.3260

Rectangle

The Rectangle color scheme consists of four colors that form a rectangle on the color wheel.



44.0533, 0.3097, 0.3198



44.0533, 0.3190, 0.3253



44.0533, 0.3157, 0.3384



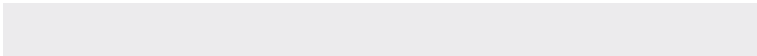
44.0533, 0.3065, 0.3328

Sweetspot

The Sweet Spot groups the original color and five complimentary colors.



44.0552, 0.3097, 0.3198



83.2121, 0.3119, 0.3266



45.3183, 0.3070, 0.3251



18.3972, 0.3120, 0.3267



93.3107, 0.3127, 0.3290



18.7317, 0.3127, 0.3290

Same Dimension

The Same Dimension uses a secret algorithm to generate beautiful new colors.



44.0552, 0.3097, 0.3198



77.0227, 0.3086, 0.3166



44.4628, 0.3126, 0.3199



9.5790, 0.3082, 0.3153



3.5828, 0.1910, 0.0826



0.1630, 0.2215, 0.0994

Inverse Universe

The Inverse Universe completely reimagines the original color for something new.



44.4100, 0.3156, 0.3238



77.8671, 0.3166, 0.3221



46.2879, 0.3128, 0.3383



9.6957, 0.3170, 0.3213



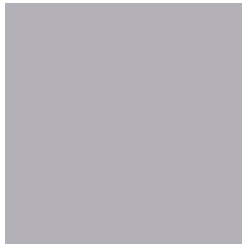
7.7347, 0.4647, 0.2334



0.2848, 0.4182, 0.2077

Previews

White Background



This preview shows how the Yxy color 44.0533, 0.3097, 0.3198 looks on a white background.

Color Contrast Check

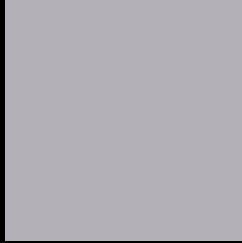
Large Text (above 18pt) WCAG AA × Fail

Any Text WCAG AA × Fail

Large Text (above 18pt) WCAG AAA × Fail

Any Text WCAG AAA × Fail

Black Background



This preview shows how the Yxy color 44.0533, 0.3097, 0.3198 looks on a black background.

Color Contrast Check

Large Text (above 18pt) WCAG AA ✓ Pass

Any Text WCAG AA ✓ Pass

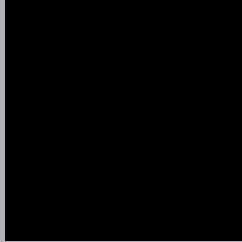
Large Text (above 18pt) WCAG AAA ✓ Pass

Any Text WCAG AAA ✓ Pass

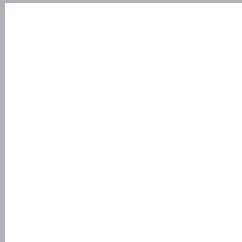
If you want to check with other color combinations, try the [Color Contrast Checker](#).

Yxy 44.0533, 0.3097, 0.3198

Background



This preview shows how black text looks on a background with the Yxy color 44.0533, 0.3097, 0.3198.



This preview shows how white text looks on a background with the Yxy color 44.0533, 0.3097, 0.3198.

Color Blindness Simulation

Color vision deficiency is a very complex topic, and I could not describe the different causes any better than Wikipedia does, so if you want to learn more, you should check out their [article about color blindness](#).

Dichromacy



Original Color

44.0533, 0.3097, 0.3198

Protanopia

44.0533, 0.3097, 0.3198

Deuteranopia

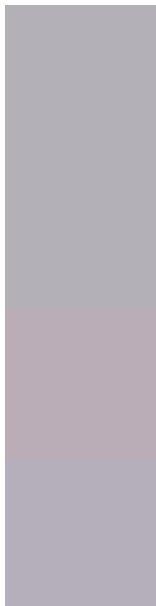
44.0421, 0.3197, 0.3137



Tritanopia

44.0374, 0.3058, 0.3107

Trichromacy



Original Color

44.0533, 0.3097, 0.3198

Protanomaly

44.0533, 0.3097, 0.3198

Deuteranomaly

43.9126, 0.3160, 0.3148

Tritanomaly

43.9511, 0.3074, 0.3133

Monochromacy



Original Color

44.0533, 0.3097, 0.3198

Achromatopsia

44.5201, 0.3127, 0.3290

Achromatomaly

44.2045, 0.3112, 0.3250

CSS Examples

Text

The CSS property to change the color of the text to Yxy 44.0533, 0.3097, 0.3198 is called "color". The color property can be set on classes, ids or directly on the HTML element.

This example shows how text in the color `rgb(179, 176, 183)` looks like.

```
.text, #text, p{  
    color:rgb(179, 176, 183)  
}
```

If you want to add a text shadow in that color use the text-shadow property, you can generate a text shadow directly with our [CSS Text Shadow Generator](#).

Here you see how black text with a 4 pixel rgb(179, 176, 183) colored shadow looks like.

```
.shadow{ text-shadow: 4px 4px 2px rgb(179, 176, 183) }
```

Border

The CSS property to change the border of an element to Yxy 44.0533, 0.3097, 0.3198 is called "border". The border property can be set on classes, ids or directly on the HTML element.

This example shows the color as border, it can be applied via the CSS property "border" or "border-color".

```
.border, #border, table{ border:4px solid rgb(179, 176, 183) }
```

If only the border color should be changed use the property `border-color`.

```
.border{ border-color:rgb(179, 176, 183) }
```

If you want to add a box shadow in that color use:

Here you see how a box with a 4 pixel `rgb(179, 176, 183)` colored shadow looks like.

```
.boxshadow{ -moz-box-shadow:4px 4px 4px  
4px rgb(179, 176, 183); -webkit-box-  
shadow:4px 4px 4px 4px rgb(179, 176, 183);  
box-shadow:4px 4px 4px 4px rgb(179, 176,  
183) }
```


Background

The CSS property to change the background color of an element to Yxy 44.0533, 0.3097, 0.3198 is called "background". The background property can be set on classes, ids or directly on the HTML element.

```
.background, #background, body{  
background: rgb(179, 176, 183) }
```

If only the background color should be changed can be used:

```
.background{ background-color: rgb(179,  
176, 183) }
```

This example shows the color as background, it is applied via the CSS property "background".

To optimize and compress your CSS code, you can use our [online CSS compressor and optimizer](#) based on csstidy. If you want to create a linear or radial gradient as background or border, check our [CSS Gradient Generator](#).

Hey! You found this booklet interesting? Support Converting Colors with the new Membership Option!

The pro membership hides all ads, plus gives you double the colors in the color bucket, and more awesome pro features!

[Learn more, Memberships starting at \\$2.50/m!](#)

**Follow me
on Twitter!**

@ConvertingColor