

Converting Colors

Yxy(43.9871, 0.3556, 0.3624)

Have a look what the booklet for
Yxy(43.9871, 0.3556, 0.3624)
contains.

Yxy(44.1460, 0.3555, 0.3629)	3
Conversions	4
Details	6
Harmonies	12
Previews	24
Color Blindness Simulation	27
CSS Examples	30

Color

Yxy(44.1460, 0.3555, 0.3629)

Conversions

Conversions Part 1

Format	Color
Hex	C4AE94
RGB	196, 174, 148
RGB Percent	77%, 68%, 58%
CMY	0.2314, 0.3176, 0.4196
CMYK	0.00, 0.11, 0.24, 0.23
HSL	33°, 29%, 67%
HSV	33°, 24%, 77%
XYZ	43.2458, 44.1460, 34.2560
YIQ	177.6140, 21.4580, -3.4220

Conversions

Conversions Part 2

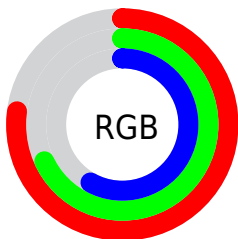
Format	Color
R _Y B	189, 196, 148
Decimal	12889748
CIE Lab	72.33, 3.85, 16.26
CIE LCh	72, 16.710, 76.674
Yxy	44.1460, 0.3555, 0.3629
Android (android.graphics.Color)	4291079828 (0xFFC4AE94)
YUV	177.6140, -14.5997, 16.1245
Hunter-Lab	66.4425, -0.0929, 15.9413

Details

The Yxy color $44.1460, 0.3555, 0.3629$ is a light color, and the websafe version is hex `CCCC99`. A complement of this color would be $39.0264, 0.2740, 0.2925$, and the grayscale version is $44.3771, 0.3127, 0.3290$.

A 20% lighter version of the original color is $81.1855, 0.3477, 0.3565$, and $20.5329, 0.3685, 0.3733$ is the 20% darker color. If you saturate the color by 10%, you get $40.2242, 0.3767, 0.3774$, and if you desaturate by 10%, it is $48.4089, 0.3365, 0.3486$.

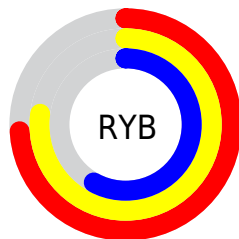
Distribution



Red (77%)

Green (68%)

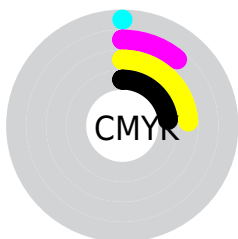
Blue (58%)



Red (74%)

Yellow (77%)

Blue (58%)

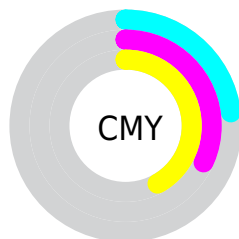


Cyan (0%)

Magenta (11%)

Yellow (24%)

Black (23%)



Cyan (23%)


Magenta (32%)

Yellow (42%)

Brightness & Saturation Gradients


These gradients show how the Yxy color 44.1460, 0.3555, 0.3629 changes by changing the brightness by 10 percent. The first figure shows a shift by +10% for each color and the second figure -10%.

Similar to the brightness gradients but the following saturation gradients show a change of the Yxy color 44.1460, 0.3555, 0.3629 by changing the saturation by 10% instead.


 44.1460, 0.3555,
0.3629


 44.1460, 0.3555,
0.3629


363.3037, 0.3339,
0.3460

 30.7853, 0.3610,
0.3671


 81.4374, 0.3476,
0.3568

 20.4354, 0.3680,
0.3724


 106.1369, 0.3446,
0.3545

 12.7119, 0.3774,
0.3793


135.3848, 0.3421,
0.3526

 7.2305, 0.3904,
0.3888

169.5654, 0.3400,
0.3509

 3.6067, 0.4098,
0.4024

209.0632, 0.3382,
0.3494

 1.4561, 0.4570,
0.4380

254.2626, 0.3365,

 0.2575, 0.5681,

0.3482

0.4319

305.5480, 0.3351,
0.3470

0.0000, 0.0000,
0.0000

44.1460, 0.3555,
0.3629

44.1460, 0.3555,
0.3629

40.2242, 0.3767,
0.3774

48.4089, 0.3365,
0.3486

36.6277, 0.3999,
0.3915

53.0162, 0.3196,
0.3349

33.3481, 0.4247,
0.4044

57.9788, 0.3048,
0.3220

30.3743, 0.4503,
0.4150

63.3050, 0.2918,
0.3100

27.6943, 0.4756,
0.4221

69.0032, 0.2804,
0.2990

■ 25.2946, 0.4989,
0.4244

■ 74.3798, 0.2760,
0.2996

■ 23.1601, 0.5190,
0.4214

■ 79.4466, 0.2768,
0.3095

■ 22.0850, 0.5290,
0.4182

■ 84.7737, 0.2776,
0.3192

■ 90.3649, 0.2784,
0.3287

Harmonies

Analogous

The Analogous color harmony consists of three colors that are next to each other on the color wheel.



44.1460, 0.3598, 0.3463



44.1460, 0.3555, 0.3629



44.1460, 0.3395, 0.3710

Triad

The Triadic color harmony groups three colors that are evenly spaced from another and form a triangle on the color wheel.



44.1460, 0.3555, 0.3629



44.1460, 0.2757, 0.3300



44.1460, 0.3074, 0.2943

Complementary

The Complementary color scheme is a pair of colors which are on the opposite of each other on the color wheel.



44.1460, 0.3555, 0.3629



39.0264, 0.2740, 0.2925

Split Complementary

Split-complementary colors differ from the complementary color scheme. The scheme consists of three colors, the original color and two neighbors of the complement color.



44.1460, 0.2855, 0.2893



44.1460, 0.3555, 0.3629



44.1460, 0.2678, 0.3088

Square

The Square scheme is like the rectangle color scheme, but the four colors are evenly spaced on the color wheel.



44.1460, 0.3555, 0.3629



44.1460, 0.2934, 0.3519



44.1460, 0.2713, 0.2943



44.1460, 0.3314, 0.3076

Rectangle

The Rectangle color scheme consists of four colors that form a rectangle on the color wheel.



44.1460, 0.3555, 0.3629



44.1460, 0.3246, 0.3699



44.1460, 0.2713, 0.2943



44.1460, 0.2995, 0.2916

Sweetspot

The Sweet Spot groups the original color and five complimentary colors.



44.1480, 0.3555, 0.3629



93.7957, 0.3238, 0.3384



35.8313, 0.3402, 0.2999



19.9649, 0.3248, 0.3392



0.0000, 0.0000, 0.0000



21.4041, 0.3127, 0.3290

Same Dimension

The Same Dimension uses a secret algorithm to generate beautiful new colors.



44.1480, 0.3555, 0.3629



76.3738, 0.3657, 0.3701



53.1401, 0.3479, 0.3897



10.9618, 0.3276, 0.3415



14.3645, 0.5271, 0.4197



0.7572, 0.4968, 0.4437

Inverse Universe

The Inverse Universe completely reimagines the original color for something new.



39.0264, 0.2740, 0.2925



65.6157, 0.2657, 0.2840



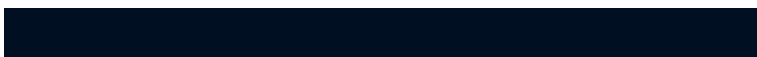
31.6094, 0.2726, 0.2607



10.4913, 0.2984, 0.3162



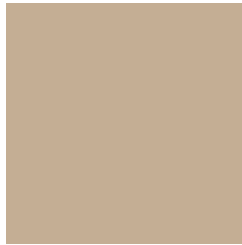
7.4058, 0.1739, 0.1459



0.4576, 0.1858, 0.1889

Previews

White Background



This preview shows how the Yxy color 44.1460, 0.3555, 0.3629 looks on a white background.

Color Contrast Check

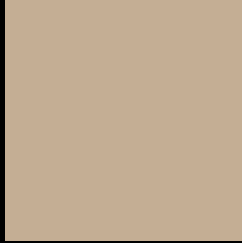
Large Text (above 18pt) WCAG AA × Fail

Any Text WCAG AA × Fail

Large Text (above 18pt) WCAG AAA × Fail

Any Text WCAG AAA × Fail

Black Background



This preview shows how the Yxy color 44.1460, 0.3555, 0.3629 looks on a black background.

Color Contrast Check

Large Text (above 18pt) WCAG AA ✓ Pass

Any Text WCAG AA ✓ Pass

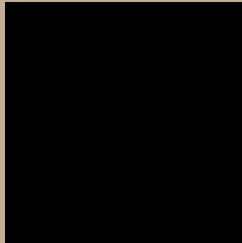
Large Text (above 18pt) WCAG AAA ✓ Pass

Any Text WCAG AAA ✓ Pass

If you want to check with other color combinations, try the [Color Contrast Checker](#).

Yxy 44.1460, 0.3555, 0.3629

Background



This preview shows how black text looks on a background with the Yxy color 44.1460, 0.3555, 0.3629.



This preview shows how white text looks on a background with the Yxy color 44.1460, 0.3555, 0.3629.

Color Blindness Simulation

Color vision deficiency is a very complex topic, and I could not describe the different causes any better than Wikipedia does, so if you want to learn more, you should check out their [article about color blindness](#).

Dichromacy



Original Color

44.1460, 0.3555, 0.3629

Protanopia

44.1790, 0.3453, 0.3664

Deuteranopia

44.2749, 0.3641, 0.3569



Tritanopia

44.0327, 0.3299, 0.3128

Trichromacy



Original Color

44.1460, 0.3555, 0.3629

Protanomaly

44.1677, 0.3484, 0.3648

Deuteranomaly

44.2315, 0.3609, 0.3585

Tritanomaly

44.1702, 0.3393, 0.3304

Monochromacy



Original Color

44.1460, 0.3555, 0.3629

Achromatopsia

44.5201, 0.3127, 0.3290

Achromatomaly

44.5486, 0.3281, 0.3423

CSS Examples

Text

The CSS property to change the color of the text to Yxy 44.1460, 0.3555, 0.3629 is called "color". The color property can be set on classes, ids or directly on the HTML element.

This example shows how text in the color `rgb(196, 174, 148)` looks like.

```
.text, #text, p{  
    color:rgb(196, 174, 148)  
}
```

If you want to add a text shadow in that color use the text-shadow property, you can generate a text shadow directly with our [CSS Text Shadow Generator](#).

Here you see how black text with a 4 pixel rgb(196, 174, 148) colored shadow looks like.

```
.shadow{ text-shadow: 4px 4px 2px rgb(196, 174, 148) }
```

Border

The CSS property to change the border of an element to Yxy 44.1460, 0.3555, 0.3629 is called "border". The border property can be set on classes, ids or directly on the HTML element.

This example shows the color as border, it can be applied via the CSS property "border" or "border-color".

```
.border, #border, table{ border:4px solid rgb(196, 174, 148) }
```

If only the border color should be changed use the property `border-color`.

```
.border{ border-color:rgb(196, 174, 148) }
```

If you want to add a box shadow in that color use:

Here you see how a box with a 4 pixel `rgb(196, 174, 148)` colored shadow looks like.

```
.boxshadow{ -moz-box-shadow:4px 4px 4px  
4px rgb(196, 174, 148); -webkit-box-  
shadow:4px 4px 4px 4px rgb(196, 174, 148);  
box-shadow:4px 4px 4px 4px rgb(196, 174,  
148) }
```


Background

The CSS property to change the background color of an element to Yxy 44.1460, 0.3555, 0.3629 is called "background". The background property can be set on classes, ids or directly on the HTML element.

```
.background, #background, body{  
background: rgb(196, 174, 148) }
```

If only the background color should be changed can be used:

```
.background{ background-color: rgb(196,  
174, 148) }
```

This example shows the color as background, it is applied via the CSS property "background".

To optimize and compress your CSS code, you can use our [online CSS compressor and optimizer](#) based on csstidy. If you want to create a linear or radial gradient as background or border, check our [CSS Gradient Generator](#).

Hey! You found this booklet interesting? Support Converting Colors with the new Membership Option!

The pro membership hides all ads, plus gives you double the colors in the color bucket, and more awesome pro features!

[Learn more, Memberships starting at \\$2.50/m!](#)

**Follow me
on Twitter!**

@ConvertingColor