

Converting Colors

$Yxy(44.1298, 0.3477, 0.3461)$

Have a look what the booklet for
Yxy(44.1298, 0.3477, 0.3461)
contains.

Yxy(44.0140, 0.3481, 0.3458)	3
<i>Conversions</i>	4
<i>Details</i>	6
<i>Harmonies</i>	12
<i>Previews</i>	24
<i>Color Blindness Simulation</i>	27
<i>CSS Examples</i>	30

Color

Yxy(44.0140, 0.3481, 0.3458)

Conversions

Conversions Part 1

Format	Color
Hex	C6AC9F
RGB	198, 172, 159
RGB Percent	78%, 67%, 62%
CMY	0.2234, 0.3255, 0.3765
CMYK	0.00, 0.13, 0.20, 0.22
HSL	20°, 26%, 70%
HSV	20°, 20%, 78%
XYZ	44.3067, 44.0140, 38.9609
YIQ	178.2920, 19.6690, 1.4690

Conversions

Conversions Part 2

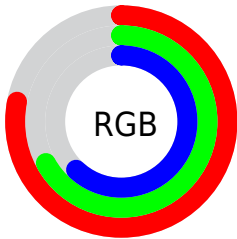
Format	Color
RYB	198, 179, 159
Decimal	13020319
CIELab	72.24, 7.35, 10.15
CIELCh	72, 12.529, 54.076
Yxy	44.0140, 0.3481, 0.3458
Android (android.graphics.Color)	4291210399 (0xFFC6AC9F)
YUV	178.2920, -9.5110, 17.2839
Hunter-Lab	66.3430, 3.1097, 11.6212

Details

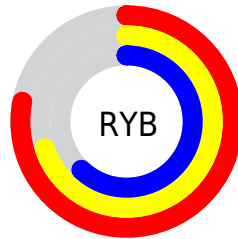
The Yxy color **44.0140, 0.3481, 0.3458** is a light color, and the websafe version is hex **CC9999**. A complement of this color would be **46.1683, 0.2825, 0.3116**, and the grayscale version is **44.7300, 0.3127, 0.3290**.

A 20% lighter version of the original color is **81.0532, 0.3413, 0.3421**, and **20.4449, 0.3583, 0.3501** is the 20% darker color. If you saturate the color by 10%, you get **38.6006, 0.3708, 0.3549**, and if you desaturate by 10%, it is **50.0417, 0.3287, 0.3370**.

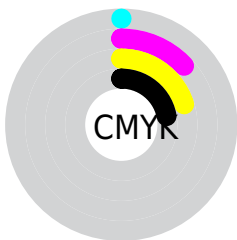
Distribution



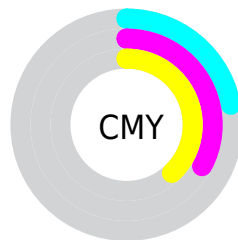
- Red (78%)
- Green (67%)
- Blue (62%)



- Red (78%)
- Yellow (70%)
- Blue (62%)



- Cyan (0%)
- Magenta (13%)
- Yellow (20%)
- Black (22%)





- Cyan (22%)
- Magenta (33%)
- Yellow (38%)

Brightness & Saturation Gradients


These gradients show how the Yxy color 44.0140, 0.3481, 0.3458 changes by changing the brightness by 10 percent. The first figure shows a shift by +10% for each color and the second figure -10%.


Similar to the brightness gradients but the following saturation gradients show a change of the Yxy color 44.0140, 0.3481, 0.3458 by changing the saturation by 10% instead.


 44.0140, 0.3481,
0.3458


 44.0140, 0.3481,
0.3458


362.7654, 0.3301,
0.3376

 30.6815, 0.3527,
0.3478


 81.2388, 0.3415,
0.3428

 20.3565, 0.3586,
0.3504


 105.8999, 0.3390,
0.3417

 12.6544, 0.3666,
0.3537


135.1060, 0.3370,
0.3408

 7.1910, 0.3778,
0.3582

169.2415, 0.3352,
0.3399

 3.5818, 0.3950,
0.3646

208.6908, 0.3337,
0.3392

 1.4425, 0.4254,
0.3753

253.8383, 0.3323,

 0.2477, 0.6261,

0.3386

0.3739

305.0684, 0.3312,
0.3380

0.0000, 0.0000,
0.0000

44.0140, 0.3481,
0.3458

44.0140, 0.3481,
0.3458

38.6006, 0.3708,
0.3549

50.0417, 0.3287,
0.3370

33.7758, 0.3973,
0.3640

56.6965, 0.3123,
0.3288

29.5207, 0.4274,
0.3724

63.9984, 0.2984,
0.3211

25.8130, 0.4608,
0.3794

71.9646, 0.2865,
0.3141

22.6290, 0.4960,
0.3836

80.4157, 0.2781,
0.3109

■ 19.9429, 0.5309,
0.3840

■ 88.3974, 0.2792,
0.3250

■ 17.7263, 0.5623,
0.3796

■ 90.7511, 0.2795,
0.3289

■ 15.9415, 0.5880,
0.3710

■ 15.8958, 0.5887,
0.3707

Harmonies

Analogous

The Analogous color harmony consists of three colors that are next to each other on the color wheel.



44.0140, 0.3438, 0.3310



44.0140, 0.3481, 0.3458



44.0140, 0.3426, 0.3568

Triad

The Triadic color harmony groups three colors that are evenly spaced from another and form a triangle on the color wheel.



44.0140, 0.3481, 0.3458



44.0140, 0.2944, 0.3423



44.0140, 0.2960, 0.2992

Complementary

The Complementary color scheme is a pair of colors which are on the opposite of each other on the color wheel.



44.0140, 0.3481, 0.3458



46.1683, 0.2825, 0.3116

Split Complementary

Split-complementary colors differ from the complementary color scheme. The scheme consists of three colors, the original color and two neighbors of the complement color.



44.0140, 0.2834, 0.3012



44.0140, 0.3481, 0.3458



44.0140, 0.2825, 0.3258

Square

The Square scheme is like the rectangle color scheme, but the four colors are evenly spaced on the color wheel.



44.0140, 0.3481, 0.3458



44.0140, 0.3113, 0.3552



44.0140, 0.2786, 0.3108



44.0140, 0.3133, 0.3046

Rectangle

The Rectangle color scheme consists of four colors that form a rectangle on the color wheel.



44.0140, 0.3481, 0.3458



44.0140, 0.3342, 0.3602



44.0140, 0.2786, 0.3108



44.0140, 0.2911, 0.2990

Sweetspot

The Sweet Spot groups the original color and five complimentary colors.



44.0160, 0.3481, 0.3458



92.7120, 0.3224, 0.3340



40.3390, 0.3260, 0.2954



19.6798, 0.3236, 0.3345



0.0000, 0.0000, 0.0000



21.4041, 0.3127, 0.3290

Same Dimension

The Same Dimension uses a secret algorithm to generate beautiful new colors.



44.0160, 0.3481, 0.3458



73.3227, 0.3582, 0.3500



51.7245, 0.3437, 0.3691



11.2040, 0.3281, 0.3367



10.4746, 0.5863, 0.3727



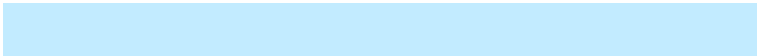
0.6297, 0.5452, 0.4053

Inverse Universe

The Inverse Universe completely reimagines the original color for something new.



46.1683, 0.2825, 0.3116



77.8708, 0.2754, 0.3070



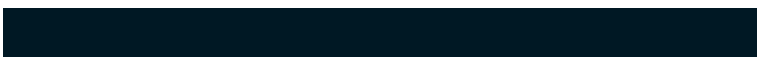
38.7798, 0.2809, 0.2854



11.4498, 0.2984, 0.3211



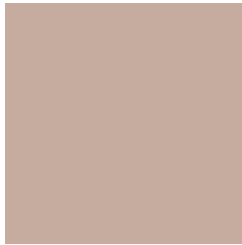
13.5661, 0.1938, 0.2175



0.7714, 0.2010, 0.2435

Previews

White Background



This preview shows how the Yxy color 44.0140, 0.3481, 0.3458 looks on a white background.

Color Contrast Check

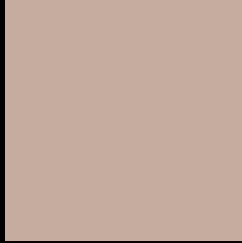
Large Text (above 18pt) WCAG AA × Fail

Any Text WCAG AA × Fail

Large Text (above 18pt) WCAG AAA × Fail

Any Text WCAG AAA × Fail

Black Background



This preview shows how the Yxy color 44.0140, 0.3481, 0.3458 looks on a black background.

Color Contrast Check

Large Text (above 18pt) WCAG AA ✓ Pass

Any Text WCAG AA ✓ Pass

Large Text (above 18pt) WCAG AAA ✓ Pass

Any Text WCAG AAA ✓ Pass

If you want to check with other color combinations, try the [Color Contrast Checker](#).

Yxy 44.0140, 0.3481, 0.3458

Background



This preview shows how black text looks on a background with the Yxy color 44.0140, 0.3481, 0.3458.



This preview shows how white text looks on a background with the Yxy color 44.0140, 0.3481, 0.3458.

Color Blindness Simulation

Color vision deficiency is a very complex topic, and I could not describe the different causes any better than Wikipedia does, so if you want to learn more, you should check out their [article about color blindness](#).

Dichromacy



Original Color

44.0140, 0.3481, 0.3458

Protanopia

44.2078, 0.3323, 0.3504

Deuteranopia

44.0465, 0.3511, 0.3444



Tritanopia

44.1708, 0.3308, 0.3128

Trichromacy



Original Color

44.0140, 0.3481, 0.3458

Protanomaly

44.0168, 0.3381, 0.3488

Deuteranomaly

43.9084, 0.3502, 0.3445

Tritanomaly

44.0848, 0.3369, 0.3240

Monochromacy



Original Color

44.0140, 0.3481, 0.3458

Achromatopsia

44.5201, 0.3127, 0.3290

Achromatomaly

44.3052, 0.3249, 0.3356

CSS Examples

Text

The CSS property to change the color of the text to Yxy 44.0140, 0.3481, 0.3458 is called "color". The color property can be set on classes, ids or directly on the HTML element.

This example shows how text in the color `rgb(198, 172, 159)` looks like.

```
.text, #text, p{  
    color:rgb(198, 172, 159)  
}
```

If you want to add a text shadow in that color use the text-shadow property, you can generate a text shadow directly with our [CSS Text Shadow Generator](#).

Here you see how black text with a 4 pixel rgb(198, 172, 159) colored shadow looks like.

```
.shadow{ text-shadow: 4px 4px 2px rgb(198, 172, 159) }
```

Border

The CSS property to change the border of an element to Yxy 44.0140, 0.3481, 0.3458 is called "border". The border property can be set on classes, ids or directly on the HTML element.

This example shows the color as border, it can be applied via the CSS property "border" or "border-color".

```
.border, #border, table{ border:4px solid rgb(198, 172, 159) }
```

If only the border color should be changed use the property `border-color`.

```
.border{ border-color:rgb(198, 172, 159) }
```

If you want to add a box shadow in that color use:

Here you see how a box with a 4 pixel `rgb(198, 172, 159)` colored shadow looks like.

```
.boxshadow{ -moz-box-shadow:4px 4px 4px  
4px rgb(198, 172, 159); -webkit-box-  
shadow:4px 4px 4px 4px rgb(198, 172, 159);  
box-shadow:4px 4px 4px 4px rgb(198, 172,  
159) }
```


Background

The CSS property to change the background color of an element to Yxy 44.0140, 0.3481, 0.3458 is called "background". The background property can be set on classes, ids or directly on the HTML element.

```
.background, #background, body{  
background: rgb(198, 172, 159) }
```

If only the background color should be changed can be used:

```
.background{ background-color: rgb(198,  
172, 159) }
```

This example shows the color as background, it is applied via the CSS property "background".

To optimize and compress your CSS code, you can use our [online CSS compressor and optimizer](#) based on csstidy. If you want to create a linear or radial gradient as background or border, check our [CSS Gradient Generator](#).

Hey! You found this booklet interesting? Support Converting Colors with the new Membership Option!

The pro membership hides all ads, plus gives you double the colors in the color bucket, and more awesome pro features!

[Learn more, Memberships starting at \\$2.50/m!](#)

**Follow me
on Twitter!**

@ConvertingColor