

# Converting Colors

$Yxy(44.2383, 0.3672, 0.3461)$

Have a look what the booklet for  
Yxy(44.2383, 0.3672, 0.3461)  
contains.

<b>Yxy(44.3354, 0.3672, 0.3464)</b> .....	3
<b><i>Conversions</i></b> .....	4
<b><i>Details</i></b> .....	6
<b><i>Harmonies</i></b> .....	12
<b><i>Previews</i></b> .....	24
<b><i>Color Blindness Simulation</i></b> .....	27
<b><i>CSS Examples</i></b> .....	30

# Color

**Yxy(44.3354, 0.3672, 0.3464)**

# Conversions

## Conversions Part 1

Format	Color
Hex	D4A89A
RGB	212, 168, 154
RGB Percent	83%, 66%, 60%
CMY	0.1684, 0.3412, 0.3960
CMYK	0.00, 0.21, 0.27, 0.17
HSL	14°, 40%, 72%
HSV	14°, 27%, 83%
XYZ	46.9976, 44.3354, 36.6561
YIQ	179.5600, 30.7180, 4.9740

# Conversions

## Conversions Part 2

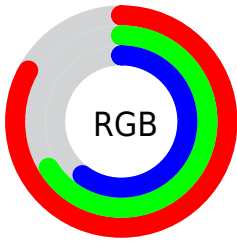
Format	Color
RYB	212, 172, 154
Decimal	13936794
CIELab	72.45, 14.12, 13.37
CIELCh	72, 19.448, 43.438
Yxy	44.3354, 0.3672, 0.3464
Android (android.graphics.Color)	4292126874 (0xFFD4A89A)
YUV	179.5600, -12.6011, 28.4499
Hunter-Lab	66.5848, 9.4672, 13.9693

# Details

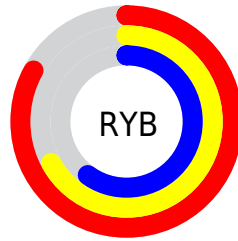
The Yxy color **44.3354, 0.3672, 0.3464** is a light color, and the websafe version is hex **CC9999**. A complement of this color would be **52.0483, 0.2713, 0.3108**, and the grayscale version is **45.4532, 0.3127, 0.3290**.

A 20% lighter version of the original color is **78.5894, 0.3461, 0.3443**, and **20.5380, 0.3826, 0.3507** is the 20% darker color. If you saturate the color by 10%, you get **38.1119, 0.3946, 0.3531**, and if you desaturate by 10%, it is **51.4237, 0.3441, 0.3398**.

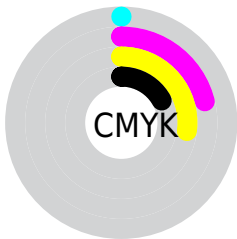
# Distribution



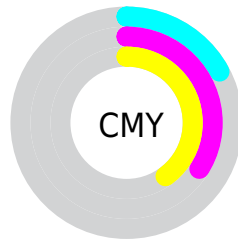
- Red (83%)
- Green (66%)
- Blue (60%)



- Red (83%)
- Yellow (67%)
- Blue (60%)



- Cyan (0%)
- Magenta (21%)
- Yellow (27%)
- Black (17%)



- Cyan (17%)
- Magenta (34%)
- Yellow (40%)

# Brightness & Saturation Gradients

These gradients show how the Yxy color 44.3354, 0.3672, 0.3464 changes by changing the brightness by 10 percent. The first figure shows a shift by +10% for each color and the second figure -10%.


Similar to the brightness gradients but the following saturation gradients show a change of the Yxy color 44.3354, 0.3672, 0.3464 by changing the saturation by 10% instead.





 44.3354, 0.3672,  
0.3464

 44.3354, 0.3672,  
0.3464

364.0752, 0.3395,  
0.3382

 30.9343, 0.3742,  
0.3483


 81.7222, 0.3570,  
0.3436

 20.5488, 0.3834,  
0.3506


 106.4767, 0.3532,  
0.3424

 12.7946, 0.3956,  
0.3534


135.7844, 0.3501,  
0.3415

 7.2873, 0.4128,  
0.3569


170.0297, 0.3473,  
0.3407

 3.6424, 0.4387,  
0.3612

209.5970, 0.3450,  
0.3399

 1.4756, 0.4879,  
0.3701

254.8708, 0.3429,

 0.2715, 0.6895,

0.3393

0.3105

306.2354, 0.3411,  
0.3387

0.0000, 0.0000,  
0.0000

44.3354, 0.3672,  
0.3464

44.3354, 0.3672,  
0.3464

38.1119, 0.3946,  
0.3531

51.4237, 0.3441,  
0.3398

32.7138, 0.4267,  
0.3594

59.4021, 0.3248,  
0.3334

28.1074, 0.4630,  
0.3645

68.3026, 0.3088,  
0.3275

24.2546, 0.5023,  
0.3675

78.1537, 0.2954,  
0.3221

21.1137, 0.5418,  
0.3673

88.6540, 0.2869,  
0.3222

■ 18.6389, 0.5773,  
0.3631

■ 92.7442, 0.2872,  
0.3289

■ 16.7768, 0.6048,  
0.3551

■ 16.3772, 0.6111,  
0.3530

# Harmonies

## Analogous

The Analogous color harmony consists of three colors that are next to each other on the color wheel.



44.3354, 0.3552, 0.3232



44.3354, 0.3672, 0.3464



44.3354, 0.3637, 0.3664

# Triad

The Triadic color harmony groups three colors that are evenly spaced from another and form a triangle on the color wheel.



44.3354, 0.3672, 0.3464



44.3354, 0.2929, 0.3582



44.3354, 0.2789, 0.2832

# Complementary

The Complementary color scheme is a pair of colors which are on the opposite of each other on the color wheel.



44.3354, 0.3672, 0.3464



52.0483, 0.2713, 0.3108

# Split Complementary

Split-complementary colors differ from the complementary color scheme. The scheme consists of three colors, the original color and two neighbors of the complement color.



44.3354, 0.2638, 0.2900



44.3354, 0.3672, 0.3464



44.3354, 0.2716, 0.3328

# Square

The Square scheme is like the rectangle color scheme, but the four colors are evenly spaced on the color wheel.



44.3354, 0.3672, 0.3464



44.3354, 0.3201, 0.3749



44.3354, 0.2612, 0.3077



44.3354, 0.3034, 0.2878



# Rectangle

The Rectangle color scheme consists of four colors that form a rectangle on the color wheel.



44.3354, 0.3672, 0.3464



44.3354, 0.3533, 0.3752



44.3354, 0.2612, 0.3077



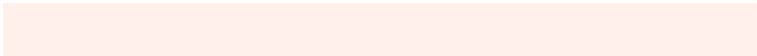
44.3354, 0.2726, 0.2842

# Sweetspot

The Sweet Spot groups the original color and five complimentary colors.



44.3375, 0.3672, 0.3464



89.2684, 0.3261, 0.3338



41.2192, 0.3280, 0.2761



18.6971, 0.3288, 0.3348



0.0000, 0.0000, 0.0000



21.4041, 0.3127, 0.3290



# Same Dimension

The Same Dimension uses a secret algorithm to generate beautiful new colors.



44.3375, 0.3672, 0.3464



61.5055, 0.3830, 0.3504



56.0757, 0.3583, 0.3800



12.9015, 0.3285, 0.3347



10.2367, 0.6087, 0.3549



0.7478, 0.5744, 0.3821

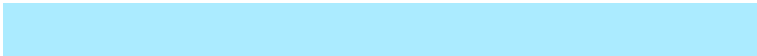


# Inverse Universe

The Inverse Universe completely reimagines the original color for something new.



52.0483, 0.2713, 0.3108



75.1272, 0.2627, 0.3063



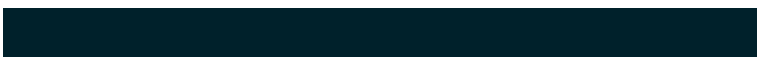
40.1842, 0.2675, 0.2721



13.5775, 0.2982, 0.3233



18.8227, 0.2027, 0.2497

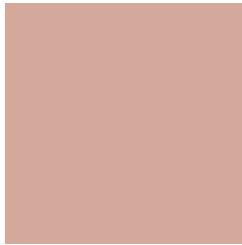


1.2598, 0.2069, 0.2650



# Previews

## White Background



This preview shows how the Yxy color 44.3354, 0.3672, 0.3464 looks on a white background.

## Color Contrast Check

Large Text (above 18pt) WCAG AA × Fail

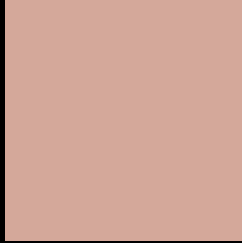
Any Text WCAG AA × Fail

Large Text (above 18pt) WCAG AAA × Fail

Any Text WCAG AAA × Fail



# Black Background



This preview shows how the Yxy color 44.3354, 0.3672, 0.3464 looks on a black background.

## Color Contrast Check

Large Text (above 18pt) WCAG AA ✓ Pass

Any Text WCAG AA ✓ Pass

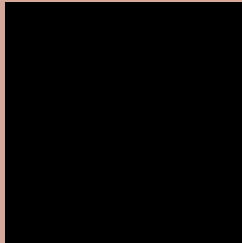
Large Text (above 18pt) WCAG AAA ✓ Pass

Any Text WCAG AAA ✓ Pass

If you want to check with other color combinations, try the [Color Contrast Checker](#).

**Yxy 44.3354, 0.3672, 0.3464**

## Background



This preview shows how black text looks on a background with the Yxy color 44.3354, 0.3672, 0.3464.



This preview shows how white text looks on a background with the Yxy color 44.3354, 0.3672, 0.3464.

# Color Blindness Simulation

Color vision deficiency is a very complex topic, and I could not describe the different causes any better than Wikipedia does, so if you want to learn more, you should check out their [article about color blindness](#).

## Dichromacy



### Original Color

44.3354, 0.3672, 0.3464

### Protanopia

44.3866, 0.3358, 0.3529

### Deuteranopia

44.2631, 0.3595, 0.3519



## Tritanopia

44.5317, 0.3491, 0.3146

# Trichromacy



## Original Color

44.3354, 0.3672, 0.3464

## Protanomaly

44.3085, 0.3465, 0.3511

## Deuteranomaly

44.3148, 0.3627, 0.3505

## Tritanomaly

44.4332, 0.3555, 0.3255

# Monochromacy



## Original Color

44.3354, 0.3672, 0.3464

## Achromatopsia

45.6411, 0.3127, 0.3290

## Achromatomaly

45.1974, 0.3312, 0.3355

# CSS Examples

## Text

The CSS property to change the color of the text to Yxy 44.3354, 0.3672, 0.3464 is called "color". The color property can be set on classes, ids or directly on the HTML element.

This example shows how text in the color `rgb(212, 168, 154)` looks like.

```
.text, #text, p{  
    color:rgb(212, 168, 154)  
}
```

If you want to add a text shadow in that color use the text-shadow property, you can generate a text shadow directly with our [CSS Text Shadow Generator](#).

Here you see how black text with a 4 pixel rgb(212, 168, 154) colored shadow looks like.

```
.shadow{ text-shadow: 4px 4px 2px rgb(212, 168, 154) }
```

## Border

The CSS property to change the border of an element to Yxy 44.3354, 0.3672, 0.3464 is called "border". The border property can be set on classes, ids or directly on the HTML element.

This example shows the color as border, it can be applied via the CSS property "border" or "border-color".

```
.border, #border, table{ border:4px solid rgb(212, 168, 154) }
```

If only the border color should be changed use the property border-color.

```
.border{ border-color:rgb(212, 168, 154) }
```

If you want to add a box shadow in that color use:

Here you see how a box with a 4 pixel rgb(212, 168, 154) colored shadow looks like.

```
.boxshadow{ -moz-box-shadow:4px 4px 4px  
4px rgb(212, 168, 154); -webkit-box-  
shadow:4px 4px 4px 4px rgb(212, 168, 154);  
box-shadow:4px 4px 4px 4px rgb(212, 168,  
154) }
```



# Background

The CSS property to change the background color of an element to Yxy 44.3354, 0.3672, 0.3464 is called "background". The background property can be set on classes, ids or directly on the HTML element.

```
.background, #background, body{  
background: rgb(212, 168, 154) }
```

If only the background color should be changed can be used:

```
.background{ background-color: rgb(212,  
168, 154) }
```

This example shows the color as background, it is applied via the CSS property "background".

To optimize and compress your CSS code, you can use our [online CSS compressor and optimizer](#) based on csstidy. If you want to create a linear or radial gradient as background or border, check our [CSS Gradient Generator](#).

Hey! You found this booklet interesting? Support Converting Colors with the new Membership Option!

The pro membership hides all ads, plus gives you double the colors in the color bucket, and more awesome pro features!

**[Learn more, Memberships starting at \\$2.50/m!](#)**

**Follow me  
on Twitter!**

@ConvertingColor