

Converting Colors

$Y_{xy}(44.2508, 0.3422, 0.3315)$

Have a look what the booklet for
Yxy(44.2508, 0.3422, 0.3315)
contains.

Yxy(44.4079, 0.3421, 0.3316)	3
Conversions	4
Details	6
Harmonies	12
Previews	24
Color Blindness Simulation	27
CSS Examples	30

Color

Yxy(44.4079, 0.3421, 0.3316)

Conversions

Conversions Part 1

Format	Color
Hex	C9ABA9
RGB	201, 171, 169
RGB Percent	79%, 67%, 66%
CMY	0.2117, 0.3294, 0.3372
CMYK	0.00, 0.15, 0.16, 0.21
HSL	4°, 23%, 73%
HSV	4°, 16%, 79%
XYZ	45.8141, 44.4079, 43.6981
YIQ	179.7420, 18.5220, 5.7380

Conversions

Conversions Part 2

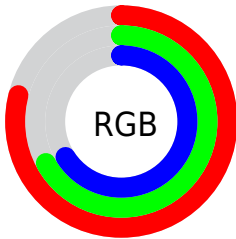
Format	Color
R _Y B	201, 171, 169
Decimal	13216681
CIE Lab	72.50, 10.57, 5.06
CIE LCh	73, 11.717, 25.597
Yxy	44.4079, 0.3421, 0.3316
Android (android.graphics.Color)	4291406761 (0xFFC9ABA9)
YUV	179.7420, -5.2958, 18.6433
Hunter-Lab	66.6393, 6.0989, 7.7686

Details

The Yxy color **44.4079, 0.3421, 0.3316** is a light color, and the websafe version is hex **CC9999**. A complement of this color would be **53.5093, 0.2887, 0.3264**, and the grayscale version is **45.5195, 0.3127, 0.3290**.

A 20% lighter version of the original color is **81.0345, 0.3346, 0.3311**, and **20.6810, 0.3512, 0.3325** is the 20% darker color. If you saturate the color by 10%, you get **37.0909, 0.3664, 0.3334**, and if you desaturate by 10%, it is **52.8605, 0.3225, 0.3299**.

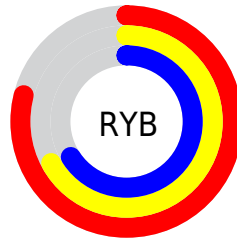
Distribution



Red (79%)

Green (67%)

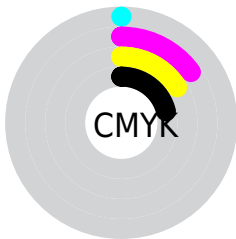
Blue (66%)



Red (79%)

Yellow (67%)

Blue (66%)

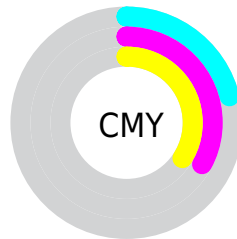


Cyan (0%)

Magenta (15%)

Yellow (16%)

Black (21%)



Cyan (21%)


Magenta (33%)


Yellow (34%)

Brightness & Saturation Gradients


These gradients show how the Yxy color 44.4079, 0.3421, 0.3316 changes by changing the brightness by 10 percent. The first figure shows a shift by +10% for each color and the second figure -10%.


Similar to the brightness gradients but the following saturation gradients show a change of the Yxy color 44.4079, 0.3421, 0.3316 by changing the saturation by 10% instead.


 44.4079, 0.3421,
0.3316

 44.4079, 0.3421,
0.3316

364.3702, 0.3272,
0.3305

 30.9913, 0.3459,
0.3318


 81.8312, 0.3366,
0.3312

 20.5922, 0.3508,
0.3321


106.6067, 0.3346,
0.3311

 12.8263, 0.3574,
0.3324


135.9372, 0.3329,
0.3309

 7.3090, 0.3667,
0.3328

170.2073, 0.3314,
0.3308

 3.6561, 0.3810,
0.3331

209.8012, 0.3302,
0.3307

 1.4831, 0.4054,
0.3330

255.1034, 0.3290,

 0.2768, 0.6531,

0.3306

0.3469

306.4983, 0.3281,
0.3305

0.0000, 0.0000,
0.0000

44.4079, 0.3421,
0.3316

44.4079, 0.3421,
0.3316

37.0909, 0.3664,
0.3334

52.8605, 0.3225,
0.3299

30.8556, 0.3961,
0.3352

62.4881, 0.3067,
0.3284

25.6525, 0.4320,
0.3368

73.3352, 0.2938,
0.3270

21.4257, 0.4738,
0.3381

85.4425, 0.2834,
0.3257

18.1145, 0.5195,
0.3387

91.1587, 0.2811,
0.3289

■ 15.6510, 0.5649,
0.3382

■ 13.9579, 0.6034,
0.3365

■ 12.9438, 0.6289,
0.3338

■ 12.6939, 0.6360,
0.3332

Harmonies

Analogous

The Analogous color harmony consists of three colors that are next to each other on the color wheel.



44.4079, 0.3305, 0.3176



44.4079, 0.3421, 0.3316



44.4079, 0.3456, 0.3454

Triad

The Triadic color harmony groups three colors that are evenly spaced from another and form a triangle on the color wheel.



44.4079, 0.3421, 0.3316



44.4079, 0.3106, 0.3530



44.4079, 0.2858, 0.3028

Complementary

The Complementary color scheme is a pair of colors which are on the opposite of each other on the color wheel.



44.4079, 0.3421, 0.3316



53.5093, 0.2887, 0.3264

Split Complementary

Split-complementary colors differ from the complementary color scheme. The scheme consists of three colors, the original color and two neighbors of the complement color.



44.4079, 0.2809, 0.3114



44.4079, 0.3421, 0.3316



44.4079, 0.2949, 0.3407

Square

The Square scheme is like the rectangle color scheme, but the four colors are evenly spaced on the color wheel.



44.4079, 0.3421, 0.3316



44.4079, 0.3272, 0.3583



44.4079, 0.2842, 0.3253



44.4079, 0.2978, 0.3012

Rectangle

The Rectangle color scheme consists of four colors that form a rectangle on the color wheel.



44.4079, 0.3421, 0.3316



44.4079, 0.3429, 0.3526



44.4079, 0.2842, 0.3253



44.4079, 0.2833, 0.3050

Sweetspot

The Sweet Spot groups the original color and five complimentary colors.



44.4099, 0.3421, 0.3316



91.8126, 0.3210, 0.3298



44.9414, 0.3159, 0.2919



19.4143, 0.3223, 0.3299



0.0000, 0.0000, 0.0000



21.4041, 0.3127, 0.3290

Same Dimension

The Same Dimension uses a secret algorithm to generate beautiful new colors.



44.4099, 0.3421, 0.3316



71.6204, 0.3497, 0.3322



50.6590, 0.3391, 0.3510



10.7410, 0.3288, 0.3305



8.0279, 0.6349, 0.3341



0.4179, 0.6173, 0.3480

Inverse Universe

The Inverse Universe completely reimagines the original color for something new.



53.5093, 0.2887, 0.3264



90.0337, 0.2839, 0.3258



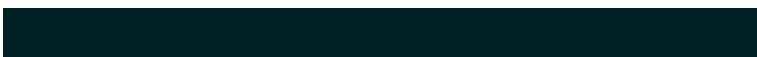
46.6902, 0.2879, 0.3060



11.9502, 0.2984, 0.3275



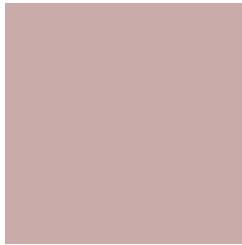
25.4513, 0.2194, 0.3097



1.2401, 0.2206, 0.3140

Previews

White Background



This preview shows how the Yxy color 44.4079, 0.3421, 0.3316 looks on a white background.

Color Contrast Check

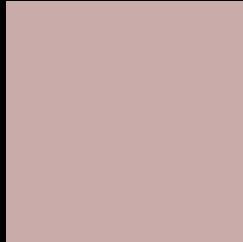
Large Text (above 18pt) WCAG AA × Fail

Any Text WCAG AA × Fail

Large Text (above 18pt) WCAG AAA × Fail

Any Text WCAG AAA × Fail

Black Background



This preview shows how the Yxy color 44.4079, 0.3421, 0.3316 looks on a black background.

Color Contrast Check

Large Text (above 18pt) WCAG AA ✓ Pass

Any Text WCAG AA ✓ Pass

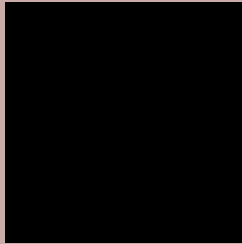
Large Text (above 18pt) WCAG AAA ✓ Pass

Any Text WCAG AAA ✓ Pass

If you want to check with other color combinations, try the [Color Contrast Checker](#).

Yxy 44.4079, 0.3421, 0.3316

Background



This preview shows how black text looks on a background with the Yxy color 44.4079, 0.3421, 0.3316.



This preview shows how white text looks on a background with the Yxy color 44.4079, 0.3421, 0.3316.

Color Blindness Simulation

Color vision deficiency is a very complex topic, and I could not describe the different causes any better than Wikipedia does, so if you want to learn more, you should check out their [article about color blindness](#).

Dichromacy



Original Color

44.4079, 0.3421, 0.3316

Protanopia

44.3679, 0.3212, 0.3357

Deuteranopia

44.5117, 0.3400, 0.3329



Tritanopia

44.4498, 0.3327, 0.3129

Trichromacy



Original Color

44.4079, 0.3421, 0.3316

Protanomaly

44.4190, 0.3286, 0.3343

Deuteranomaly

44.6490, 0.3410, 0.3329

Tritanomaly

44.4803, 0.3361, 0.3203

Monochromacy



Original Color

44.4079, 0.3421, 0.3316

Achromatopsia

45.6411, 0.3127, 0.3290

Achromatomaly

45.2702, 0.3232, 0.3303

CSS Examples

Text

The CSS property to change the color of the text to Yxy 44.4079, 0.3421, 0.3316 is called "color". The color property can be set on classes, ids or directly on the HTML element.

This example shows how text in the color `rgb(201, 171, 169)` looks like.

```
.text, #text, p{  
    color:rgb(201, 171, 169)  
}
```

If you want to add a text shadow in that color use the text-shadow property, you can generate a text shadow directly with our [CSS Text Shadow Generator](#).

Here you see how black text with a 4 pixel rgb(201, 171, 169) colored shadow looks like.

```
.shadow{ text-shadow: 4px 4px 2px rgb(201, 171, 169) }
```

Border

The CSS property to change the border of an element to Yxy 44.4079, 0.3421, 0.3316 is called "border". The border property can be set on classes, ids or directly on the HTML element.

This example shows the color as border, it can be applied via the CSS property "border" or "border-color".

```
.border, #border, table{ border:4px solid rgb(201, 171, 169) }
```

If only the border color should be changed use the property `border-color`.

```
.border{ border-color:rgb(201, 171, 169) }
```

If you want to add a box shadow in that color use:

Here you see how a box with a 4 pixel `rgb(201, 171, 169)` colored shadow looks like.

```
.boxshadow{ -moz-box-shadow:4px 4px 4px  
4px rgb(201, 171, 169); -webkit-box-  
shadow:4px 4px 4px 4px rgb(201, 171, 169);  
box-shadow:4px 4px 4px 4px rgb(201, 171,  
169) }
```


Background

The CSS property to change the background color of an element to Yxy 44.4079, 0.3421, 0.3316 is called "background". The background property can be set on classes, ids or directly on the HTML element.

```
.background, #background, body{  
background: rgb(201, 171, 169) }
```

If only the background color should be changed can be used:

```
.background{ background-color: rgb(201,  
171, 169) }
```

This example shows the color as background, it is applied via the CSS property "background".

To optimize and compress your CSS code, you can use our [online CSS compressor and optimizer](#) based on csstidy. If you want to create a linear or radial gradient as background or border, check our [CSS Gradient Generator](#).

Hey! You found this booklet interesting? Support Converting Colors with the new Membership Option!

The pro membership hides all ads, plus gives you double the colors in the color bucket, and more awesome pro features!

[Learn more, Memberships starting at \\$2.50/m!](#)

**Follow me
on Twitter!**

@ConvertingColor