

# Converting Colors

$Yxy(44.3272, 0.3531, 0.3443)$

Have a look what the booklet for  
Yxy(44.3272, 0.3531, 0.3443)  
contains.

<b>Yxy(44.3255, 0.3530, 0.3443)</b> .....	3
<b>Conversions</b> .....	4
<b>Details</b> .....	6
<b>Harmonies</b> .....	12
<b>Previews</b> .....	24
<b>Color Blindness Simulation</b> .....	27
<b>CSS Examples</b> .....	30

# Color

**Yxy(44.3255, 0.3530, 0.3443)**

# Conversions

## Conversions Part 1

Format	Color
Hex	CBAB9F
RGB	203, 171, 159
RGB Percent	80%, 67%, 62%
CMY	0.2040, 0.3294, 0.3764
CMYK	0.00, 0.16, 0.22, 0.20
HSL	16°, 30%, 71%
HSV	16°, 22%, 80%
XYZ	45.4455, 44.3255, 38.9699
YIQ	179.2000, 22.9240, 3.0520

# Conversions

## Conversions Part 2

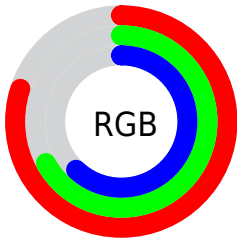
Format	Color
R <sub>Y</sub> B	203, 176, 159
Decimal	13347743
CIE Lab	72.45, 9.75, 10.49
CIE LCh	72, 14.323, 47.105
Yxy	44.3255, 0.3530, 0.3443
Android (android.graphics.Color)	4291537823 (0xFFC BAB9F)
YUV	179.2000, -9.9586, 20.8726
Hunter-Lab	66.5774, 5.3332, 11.8998

# Details

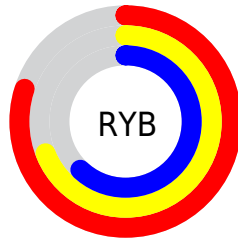
The Yxy color  $44.3255, 0.3530, 0.3443$  is a light color, and the websafe version is hex  $CC9999$ . A complement of this color would be  $48.9372, 0.2797, 0.3132$ , and the grayscale version is  $45.2369, 0.3127, 0.3290$ .

A 20% lighter version of the original color is  $80.5078, 0.3414, 0.3411$ , and  $20.5723, 0.3640, 0.3480$  is the 20% darker color. If you saturate the color by 10%, you get  $38.4110, 0.3773, 0.3519$ , and if you desaturate by 10%, it is  $50.9824, 0.3325, 0.3370$ .

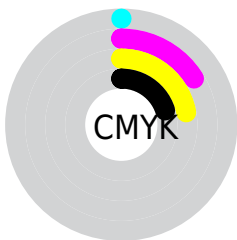
# Distribution



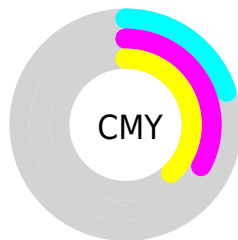
- Red (80%)
- Green (67%)
- Blue (62%)



- Red (80%)
- Yellow (69%)
- Blue (62%)



- Cyan (0%)
- Magenta (16%)
- Yellow (22%)
- Black (20%)




- Cyan (20%)
- Magenta (33%)
- Yellow (38%)


# Brightness & Saturation Gradients

These gradients show how the Yxy color 44.3255, 0.3530, 0.3443 changes by changing the brightness by 10 percent. The first figure shows a shift by +10% for each color and the second figure -10%.


Similar to the brightness gradients but the following saturation gradients show a change of the Yxy color 44.3255, 0.3530, 0.3443 by changing the saturation by 10% instead.





 44.3255, 0.3530,  
0.3443


 44.3255, 0.3530,  
0.3443

364.0349, 0.3325,  
0.3369

 30.9265, 0.3582,  
0.3461


 81.7073, 0.3455,  
0.3417

 20.5429, 0.3649,  
0.3483


 106.4589, 0.3427,  
0.3407

 12.7903, 0.3740,  
0.3511


135.7635, 0.3403,  
0.3398

 7.2843, 0.3868,  
0.3549

170.0054, 0.3383,  
0.3391

 3.6405, 0.4062,  
0.3600

209.5692, 0.3366,  
0.3384

 1.4746, 0.4403,  
0.3682

254.8390, 0.3351,

 0.2707, 0.6466,

0.3379

0.3534

306.1995, 0.3337,  
0.3373

0.0000, 0.0000,  
0.0000

44.3255, 0.3530,  
0.3443

44.3255, 0.3530,  
0.3443

38.4110, 0.3773,  
0.3519

50.9824, 0.3325,  
0.3370

33.2069, 0.4059,  
0.3593

58.4003, 0.3153,  
0.3301

28.6875, 0.4387,  
0.3660

66.6048, 0.3009,  
0.3237

24.8235, 0.4751,  
0.3711

75.6183, 0.2888,  
0.3179

21.5831, 0.5133,  
0.3734

85.1026, 0.2814,  
0.3182

■ 18.9317, 0.5504,  
0.3720

■ 91.4329, 0.2821,  
0.3289

■ 16.8309, 0.5824,  
0.3661

■ 15.4616, 0.6036,  
0.3589

# Harmonies

## Analogous

The Analogous color harmony consists of three colors that are next to each other on the color wheel.



44.3255, 0.3456, 0.3270



44.3255, 0.3530, 0.3443



44.3255, 0.3492, 0.3583

# Triad

The Triadic color harmony groups three colors that are evenly spaced from another and form a triangle on the color wheel.



44.3255, 0.3530, 0.3443



44.3255, 0.2959, 0.3482



44.3255, 0.2896, 0.2949

# Complementary

The Complementary color scheme is a pair of colors which are on the opposite of each other on the color wheel.



44.3255, 0.3530, 0.3443



48.9372, 0.2797, 0.3132

# Split Complementary

Split-complementary colors differ from the complementary color scheme. The scheme consists of three colors, the original color and two neighbors of the complement color.



44.3255, 0.2772, 0.2991



44.3255, 0.3530, 0.3443



44.3255, 0.2808, 0.3297

# Square

The Square scheme is like the rectangle color scheme, but the four colors are evenly spaced on the color wheel.



44.3255, 0.3530, 0.3443



44.3255, 0.3159, 0.3614



44.3255, 0.2741, 0.3116



44.3255, 0.3085, 0.2992



# Rectangle

The Rectangle color scheme consists of four colors that form a rectangle on the color wheel.



44.3255, 0.3530, 0.3443



44.3255, 0.3409, 0.3637



44.3255, 0.2741, 0.3116



44.3255, 0.2846, 0.2953

# Sweetspot

The Sweet Spot groups the original color and five complimentary colors.



44.3275, 0.3530, 0.3443



92.1594, 0.3225, 0.3331



41.2689, 0.3256, 0.2892



19.5494, 0.3237, 0.3335



0.0000, 0.0000, 0.0000



21.4041, 0.3127, 0.3290



# Same Dimension

The Same Dimension uses a secret algorithm to generate beautiful new colors.



44.3275, 0.3530, 0.3443



69.4449, 0.3639, 0.3478



53.2124, 0.3475, 0.3707



11.7035, 0.3283, 0.3354



9.9739, 0.6012, 0.3608



0.6434, 0.5618, 0.3921

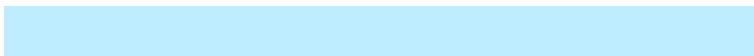


# Inverse Universe

The Inverse Universe completely reimagines the original color for something new.



48.9372, 0.2797, 0.3132



78.5169, 0.2727, 0.3093



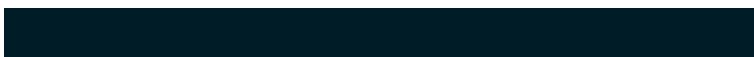
40.1623, 0.2776, 0.2835



12.1892, 0.2983, 0.3225



16.3037, 0.1996, 0.2386

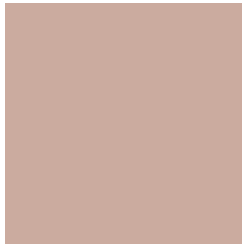


0.9633, 0.2051, 0.2583



# Previews

## White Background



This preview shows how the Yxy color 44.3255, 0.3530, 0.3443 looks on a white background.

## Color Contrast Check

Large Text (above 18pt) WCAG AA × Fail

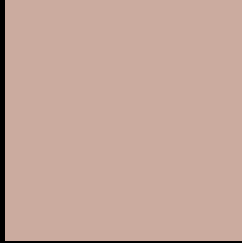
Any Text WCAG AA × Fail

Large Text (above 18pt) WCAG AAA × Fail

Any Text WCAG AAA × Fail



# Black Background



This preview shows how the Yxy color 44.3255, 0.3530, 0.3443 looks on a black background.

## Color Contrast Check

Large Text (above 18pt) WCAG AA ✓ Pass

Any Text WCAG AA ✓ Pass

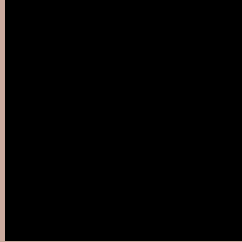
Large Text (above 18pt) WCAG AAA ✓ Pass

Any Text WCAG AAA ✓ Pass

If you want to check with other color combinations, try the [Color Contrast Checker](#).

**Yxy 44.3255, 0.3530, 0.3443**

## Background



This preview shows how black text looks on a background with the Yxy color 44.3255, 0.3530, 0.3443.



This preview shows how white text looks on a background with the Yxy color 44.3255, 0.3530, 0.3443.

# Color Blindness Simulation

Color vision deficiency is a very complex topic, and I could not describe the different causes any better than Wikipedia does, so if you want to learn more, you should check out their [article about color blindness](#).

## Dichromacy



### Original Color

44.3255, 0.3530, 0.3443

### Protanopia

44.3672, 0.3323, 0.3490

### Deuteranopia

44.1856, 0.3521, 0.3444



## Tritanopia

44.4633, 0.3365, 0.3130

# Trichromacy



## Original Color

44.3255, 0.3530, 0.3443

## Protanomaly

44.4396, 0.3400, 0.3473

## Deuteranomaly

44.1856, 0.3521, 0.3444

## Tritanomaly

44.3722, 0.3426, 0.3241

# Monochromacy



## Original Color

44.3255, 0.3530, 0.3443

## Achromatopsia

45.0786, 0.3127, 0.3290

## Achromatomaly

44.7206, 0.3267, 0.3343

# CSS Examples

## Text

The CSS property to change the color of the text to Yxy 44.3255, 0.3530, 0.3443 is called "color". The color property can be set on classes, ids or directly on the HTML element.

This example shows how text in the color `rgb(203, 171, 159)` looks like.

```
.text, #text, p{  
    color:rgb(203, 171, 159)  
}
```

If you want to add a text shadow in that color use the text-shadow property, you can generate a text shadow directly with our [CSS Text Shadow Generator](#).

Here you see how black text with a 4 pixel rgb(203, 171, 159) colored shadow looks like.

```
.shadow{ text-shadow: 4px 4px 2px rgb(203, 171, 159) }
```

## Border

The CSS property to change the border of an element to Yxy 44.3255, 0.3530, 0.3443 is called "border". The border property can be set on classes, ids or directly on the HTML element.

This example shows the color as border, it can be applied via the CSS property "border" or "border-color".

```
.border, #border, table{ border:4px solid rgb(203, 171, 159) }
```

If only the border color should be changed use the property `border-color`.

```
.border{ border-color:rgb(203, 171, 159) }
```

If you want to add a box shadow in that color use:

Here you see how a box with a 4 pixel `rgb(203, 171, 159)` colored shadow looks like.

```
.boxshadow{ -moz-box-shadow:4px 4px 4px  
4px rgb(203, 171, 159); -webkit-box-  
shadow:4px 4px 4px 4px rgb(203, 171, 159);  
box-shadow:4px 4px 4px 4px rgb(203, 171,  
159) }
```



# Background

The CSS property to change the background color of an element to Yxy 44.3255, 0.3530, 0.3443 is called "background". The background property can be set on classes, ids or directly on the HTML element.

```
.background, #background, body{  
background: rgb(203, 171, 159) }
```

If only the background color should be changed can be used:

```
.background{ background-color: rgb(203,  
171, 159) }
```

This example shows the color as background, it is applied via the CSS property "background".

To optimize and compress your CSS code, you can use our [online CSS compressor and optimizer](#) based on csstidy. If you want to create a linear or radial gradient as background or border, check our [CSS Gradient Generator](#).

Hey! You found this booklet interesting? Support Converting Colors with the new Membership Option!

The pro membership hides all ads, plus gives you double the colors in the color bucket, and more awesome pro features!

**[Learn more, Memberships starting at \\$2.50/m!](#)**

**Follow me  
on Twitter!**

@ConvertingColor