

Converting Colors

$Yxy(44.3352, 0.3536, 0.3289)$

Have a look what the booklet for
Yxy(44.3352, 0.3536, 0.3289)
contains.

Yxy(44.2763, 0.3543, 0.3291)	3
<i>Conversions</i>	4
<i>Details</i>	6
<i>Harmonies</i>	12
<i>Previews</i>	24
<i>Color Blindness Simulation</i>	27
<i>CSS Examples</i>	30

Color

Yxy(44.2763, 0.3543, 0.3291)

Conversions

Conversions Part 1

Format	Color
Hex	D3A7A7
RGB	211, 167, 167
RGB Percent	83%, 65%, 65%
CMY	0.1724, 0.3451, 0.3451
CMYK	0.00, 0.21, 0.21, 0.17
HSL	360°, 33%, 74%
HSV	360°, 21%, 83%
XYZ	47.6666, 44.2763, 42.5946
YIQ	180.1560, 26.2240, 9.3280

Conversions

Conversions Part 2

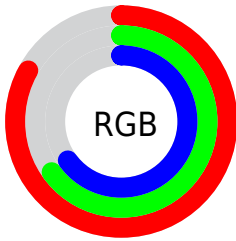
Format	Color
R _Y B	211, 167, 167
Decimal	13871015
CIE Lab	72.41, 16.16, 6.16
CIE LCh	72, 17.294, 20.879
Yxy	44.2763, 0.3543, 0.3291
Android (android.graphics.Color)	4292061095 (0xFFD3A7A7)
YUV	180.1560, -6.4859, 27.0502
Hunter-Lab	66.5404, 11.4238, 8.6250

Details

The Yxy color $44.2763, 0.3543, 0.3291$ is a light color, and the websafe version is hex $CC9999$. A complement of this color would be $59.5278, 0.2818, 0.3289$, and the grayscale version is $45.7575, 0.3127, 0.3290$.

A 20% lighter version of the original color is $78.7765, 0.3365, 0.3291$, and $20.5672, 0.3671, 0.3292$ is the 20% darker color. If you saturate the color by 10%, you get $36.4495, 0.3822, 0.3292$, and if you desaturate by 10%, it is $53.4961, 0.3319, 0.3290$.

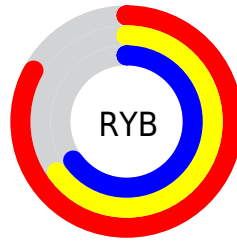
Distribution



Red (83%)

Green (65%)

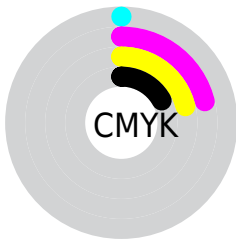
Blue (65%)



Red (83%)

Yellow (65%)

Blue (65%)

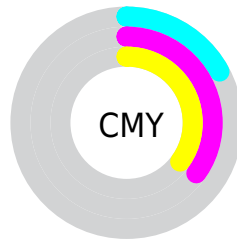


Cyan (0%)

Magenta (21%)

Yellow (21%)

Black (17%)



Cyan (17%)


Magenta (35%)


Yellow (35%)

Brightness & Saturation Gradients


These gradients show how the Yxy color 44.2763, 0.3543, 0.3291 changes by changing the brightness by 10 percent. The first figure shows a shift by +10% for each color and the second figure -10%.


Similar to the brightness gradients but the following saturation gradients show a change of the Yxy color 44.2763, 0.3543, 0.3291 by changing the saturation by 10% instead.


 44.2763, 0.3543,
0.3291

 44.2763, 0.3543,
0.3291


363.8346, 0.3332,
0.3293

 30.8878, 0.3597,
0.3289


 81.6333, 0.3465,
0.3293

 20.5134, 0.3666,
0.3287


 106.3707, 0.3437,
0.3293

 12.7688, 0.3760,
0.3283


135.6597, 0.3412,
0.3293

 7.2695, 0.3893,
0.3275


169.8849, 0.3392,
0.3293

 3.6312, 0.4095,
0.3258

209.4305, 0.3374,
0.3293

 1.4695, 0.4438,
0.3220

254.6811, 0.3358,

 0.2671, 0.7082,

0.3293

0.2918

306.0210, 0.3344,
0.3293

0.0000, 0.0000,
0.0000

44.2763, 0.3543,
0.3291

44.2763, 0.3543,
0.3291

36.4495, 0.3822,
0.3292

53.4961, 0.3319,
0.3290

29.9424, 0.4165,
0.3293

64.1657, 0.3141,
0.3290

24.6842, 0.4574,
0.3294

76.3458, 0.2998,
0.3290

20.5948, 0.5037,
0.3295

90.0923, 0.2883,
0.3289

17.5852, 0.5516,
0.3297

92.5950, 0.2866,
0.3289

■ 15.5533, 0.5945,
0.3298

■ 14.3777, 0.6249,
0.3299

■ 13.8552, 0.6400,
0.3300

Harmonies

Analogous

The Analogous color harmony consists of three colors that are next to each other on the color wheel.



44.2763, 0.3353, 0.3093



44.2763, 0.3543, 0.3291



44.2763, 0.3617, 0.3496

Triad

The Triadic color harmony groups three colors that are evenly spaced from another and form a triangle on the color wheel.



44.2763, 0.3543, 0.3291



44.2763, 0.3132, 0.3670



44.2763, 0.2714, 0.2918

Complementary

The Complementary color scheme is a pair of colors which are on the opposite of each other on the color wheel.



44.2763, 0.3543, 0.3291



59.5278, 0.2818, 0.3289

Split Complementary

Split-complementary colors differ from the complementary color scheme. The scheme consists of three colors, the original color and two neighbors of the complement color.



44.2763, 0.2661, 0.3055



44.2763, 0.3543, 0.3291



44.2763, 0.2897, 0.3497

Square

The Square scheme is like the rectangle color scheme, but the four colors are evenly spaced on the color wheel.



44.2763, 0.3543, 0.3291



44.2763, 0.3373, 0.3727



44.2763, 0.2727, 0.3267



44.2763, 0.2874, 0.2881

Rectangle

The Rectangle color scheme consists of four colors that form a rectangle on the color wheel.



44.2763, 0.3543, 0.3291



44.2763, 0.3589, 0.3612



44.2763, 0.2727, 0.3267



44.2763, 0.2683, 0.2953

Sweetspot

The Sweet Spot groups the original color and five complimentary colors.



44.2783, 0.3543, 0.3291



89.6775, 0.3229, 0.3290



46.0851, 0.3145, 0.2774



18.9650, 0.3240, 0.3290



0.0000, 0.0000, 0.0000



21.4041, 0.3127, 0.3290

Same Dimension

The Same Dimension uses a secret algorithm to generate beautiful new colors.



44.2783, 0.3543, 0.3291



62.4044, 0.3658, 0.3291



52.7311, 0.3492, 0.3548



11.8083, 0.3291, 0.3290



8.3579, 0.6400, 0.3299



0.4673, 0.6399, 0.3299

Inverse Universe

The Inverse Universe completely reimagines the original color for something new.



44.2783, 0.3543, 0.3291



62.4044, 0.3658, 0.3291



49.6377, 0.2800, 0.3017



11.8083, 0.3291, 0.3290



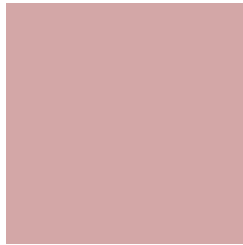
8.3579, 0.6400, 0.3299



0.4673, 0.6399, 0.3299

Previews

White Background



This preview shows how the Yxy color 44.2763, 0.3543, 0.3291 looks on a white background.

Color Contrast Check

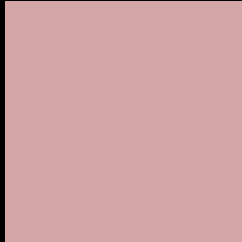
Large Text (above 18pt) WCAG AA × Fail

Any Text WCAG AA × Fail

Large Text (above 18pt) WCAG AAA × Fail

Any Text WCAG AAA × Fail

Black Background



This preview shows how the Yxy color 44.2763, 0.3543, 0.3291 looks on a black background.

Color Contrast Check

Large Text (above 18pt) WCAG AA ✓ Pass

Any Text WCAG AA ✓ Pass

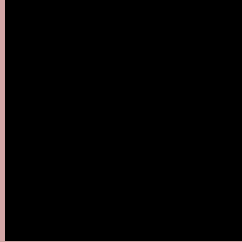
Large Text (above 18pt) WCAG AAA ✓ Pass

Any Text WCAG AAA ✓ Pass

If you want to check with other color combinations, try the [Color Contrast Checker](#).

Yxy 44.2763, 0.3543, 0.3291

Background



This preview shows how black text looks on a background with the Yxy color 44.2763, 0.3543, 0.3291.



This preview shows how white text looks on a background with the Yxy color 44.2763, 0.3543, 0.3291.

Color Blindness Simulation

Color vision deficiency is a very complex topic, and I could not describe the different causes any better than Wikipedia does, so if you want to learn more, you should check out their [article about color blindness](#).

Dichromacy



Original Color

44.2763, 0.3543, 0.3291

Protanopia

44.4065, 0.3204, 0.3343

Deuteranopia

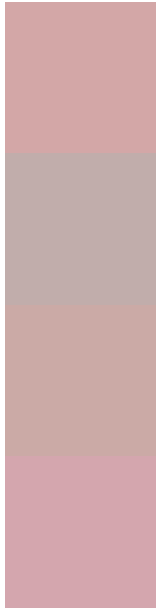
44.4003, 0.3427, 0.3367



Tritanopia

44.1217, 0.3454, 0.3133

Trichromacy



Original Color

44.2763, 0.3543, 0.3291

Protanomaly

44.1649, 0.3326, 0.3316

Deuteranomaly

44.1991, 0.3469, 0.3341

Tritanomaly

44.3255, 0.3489, 0.3193

Monochromacy



Original Color

44.2763, 0.3543, 0.3291

Achromatopsia

45.6411, 0.3127, 0.3290

Achromatomaly

44.8315, 0.3270, 0.3290

CSS Examples

Text

The CSS property to change the color of the text to Yxy 44.2763, 0.3543, 0.3291 is called "color". The color property can be set on classes, ids or directly on the HTML element.

This example shows how text in the color `rgb(211, 167, 167)` looks like.

```
.text, #text, p{  
    color:rgb(211, 167, 167)  
}
```

If you want to add a text shadow in that color use the text-shadow property, you can generate a text shadow directly with our [CSS Text Shadow Generator](#).

Here you see how black text with a 4 pixel rgb(211, 167, 167) colored shadow looks like.

```
.shadow{ text-shadow: 4px 4px 2px rgb(211, 167, 167) }
```

Border

The CSS property to change the border of an element to Yxy 44.2763, 0.3543, 0.3291 is called "border". The border property can be set on classes, ids or directly on the HTML element.

This example shows the color as border, it can be applied via the CSS property "border" or "border-color".

```
.border, #border, table{ border:4px solid rgb(211, 167, 167) }
```

If only the border color should be changed use the property `border-color`.

```
.border{ border-color:rgb(211, 167, 167) }
```

If you want to add a box shadow in that color use:

Here you see how a box with a 4 pixel `rgb(211, 167, 167)` colored shadow looks like.

```
.boxshadow{ -moz-box-shadow:4px 4px 4px  
4px rgb(211, 167, 167); -webkit-box-  
shadow:4px 4px 4px 4px rgb(211, 167, 167);  
box-shadow:4px 4px 4px 4px rgb(211, 167,  
167) }
```


Background

The CSS property to change the background color of an element to Yxy 44.2763, 0.3543, 0.3291 is called "background". The background property can be set on classes, ids or directly on the HTML element.

```
.background, #background, body{  
background: rgb(211, 167, 167) }
```

If only the background color should be changed can be used:

```
.background{ background-color: rgb(211,  
167, 167) }
```

This example shows the color as background, it is applied via the CSS property "background".

To optimize and compress your CSS code, you can use our [online CSS compressor and optimizer](#) based on csstidy. If you want to create a linear or radial gradient as background or border, check our [CSS Gradient Generator](#).

Hey! You found this booklet interesting? Support Converting Colors with the new Membership Option!

The pro membership hides all ads, plus gives you double the colors in the color bucket, and more awesome pro features!

[Learn more, Memberships starting at \\$2.50/m!](#)

**Follow me
on Twitter!**

@ConvertingColor