

# Converting Colors

$Yxy(44.5098, 0.3416, 0.3292)$

Have a look what the booklet for  
Yxy(44.5098, 0.3416, 0.3292)  
contains.

<b>Yxy(44.6227, 0.3412, 0.3291)</b> .....	3
<b>Conversions</b> .....	4
<b>Details</b> .....	6
<b>Harmonies</b> .....	12
<b>Previews</b> .....	24
<b>Color Blindness Simulation</b> .....	27
<b>CSS Examples</b> .....	30

# Color

**Yxy(44.6227, 0.3412, 0.3291)**

# Conversions

## Conversions Part 1

Format	Color
Hex	CAABAB
RGB	202, 171, 171
RGB Percent	79%, 67%, 67%
CMY	0.2080, 0.3293, 0.3294
CMYK	0.00, 0.15, 0.15, 0.21
HSL	0°, 23%, 73%
HSV	0°, 15%, 79%
XYZ	46.2633, 44.6227, 44.7041
YIQ	180.2690, 18.4760, 6.5720

# Conversions

## Conversions Part 2

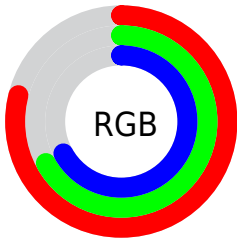
Format	Color
R <sub>YB</sub>	202, 171, 171
Decimal	13282219
CIE Lab	72.64, 11.23, 4.18
CIE LCh	73, 11.984, 20.435
Yxy	44.6227, 0.3412, 0.3291
Android (android.graphics.Color)	4291472299 (0xFFCAABAB)
YUV	180.2690, -4.5696, 19.0581
Hunter-Lab	66.8002, 6.7220, 7.0821

# Details

The Yxy color **44.6227, 0.3412, 0.3291** is a light color, and the websafe version is hex **CC9999**. A complement of this color would be **55.1375, 0.2897, 0.3289**, and the grayscale version is **45.8108, 0.3127, 0.3290**.

A 20% lighter version of the original color is **81.1437, 0.3332, 0.3291**, and **20.8215, 0.3499, 0.3291** is the 20% darker color. If you saturate the color by 10%, you get **36.8587, 0.3658, 0.3292**, and if you desaturate by 10%, it is **53.6730, 0.3215, 0.3290**.

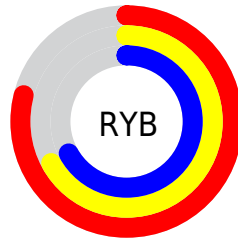
# Distribution



Red (79%)

Green (67%)

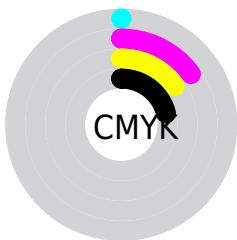
Blue (67%)



Red (79%)

Yellow (67%)

Blue (67%)

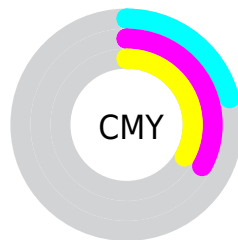


Cyan (0%)

Magenta (15%)

Yellow (15%)

Black (21%)



Cyan (21%)

Magenta (33%)

Yellow (33%)

# Brightness & Saturation Gradients

These gradients show how the Yxy color 44.6227, 0.3412, 0.3291 changes by changing the brightness by 10 percent. The first figure shows a shift by +10% for each color and the second figure -10%.


Similar to the brightness gradients but the following saturation gradients show a change of the Yxy color 44.6227, 0.3412, 0.3291 by changing the saturation by 10% instead.





 44.6227, 0.3412,  
0.3291

 44.6227, 0.3412,  
0.3291


365.2433, 0.3268,  
0.3292

 31.1603, 0.3449,  
0.3290


 82.1539, 0.3359,  
0.3292

 20.7210, 0.3496,  
0.3289


106.9916, 0.3339,  
0.3292

 12.9202, 0.3560,  
0.3287


136.3899, 0.3323,  
0.3292

 7.3736, 0.3650,  
0.3284

170.7331, 0.3309,  
0.3292

 3.6968, 0.3787,  
0.3276

210.4056, 0.3296,  
0.3292

 1.5055, 0.4021,  
0.3258

255.7919, 0.3286,

 0.2926, 0.6342,

0.3292

0.3360

307.2764, 0.3276,  
0.3292

0.0000, 0.0000,  
0.0000

44.6227, 0.3412,  
0.3291

44.6227, 0.3412,  
0.3291

36.8587, 0.3658,  
0.3292

53.6730, 0.3215,  
0.3290

30.3171, 0.3963,  
0.3293

64.0579, 0.3058,  
0.3290

24.9374, 0.4334,  
0.3294

75.8306, 0.2932,  
0.3289

20.6517, 0.4768,  
0.3296

89.0395, 0.2830,  
0.3289

17.3850, 0.5243,  
0.3297

91.2914, 0.2816,  
0.3289

■ 15.0528, 0.5709,  
0.3298

■ 13.5573, 0.6092,  
0.3299

■ 12.7789, 0.6327,  
0.3300

■ 12.5535, 0.6400,  
0.3300

# Harmonies

## Analogous

The Analogous color harmony consists of three colors that are next to each other on the color wheel.



44.6227, 0.3282, 0.3151



44.6227, 0.3412, 0.3291



44.6227, 0.3464, 0.3434

# Triad

The Triadic color harmony groups three colors that are evenly spaced from another and form a triangle on the color wheel.



44.6227, 0.3412, 0.3291



44.6227, 0.3135, 0.3550



44.6227, 0.2838, 0.3033

# Complementary

The Complementary color scheme is a pair of colors which are on the opposite of each other on the color wheel.



44.6227, 0.3412, 0.3291



55.1375, 0.2897, 0.3289

# Split Complementary

Split-complementary colors differ from the complementary color scheme. The scheme consists of three colors, the original color and two neighbors of the complement color.



44.6227, 0.2802, 0.3132



44.6227, 0.3412, 0.3291



44.6227, 0.2971, 0.3434

# Square

The Square scheme is like the rectangle color scheme, but the four colors are evenly spaced on the color wheel.



44.6227, 0.3412, 0.3291



44.6227, 0.3301, 0.3590



44.6227, 0.2850, 0.3279



44.6227, 0.2950, 0.3004



# Rectangle

The Rectangle color scheme consists of four colors that form a rectangle on the color wheel.



44.6227, 0.3412, 0.3291



44.6227, 0.3446, 0.3514



44.6227, 0.2850, 0.3279



44.6227, 0.2817, 0.3059

# Sweetspot

The Sweet Spot groups the original color and five complimentary colors.



44.6247, 0.3412, 0.3291



91.3427, 0.3211, 0.3290



45.9411, 0.3145, 0.2915



19.3007, 0.3223, 0.3290



0.0000, 0.0000, 0.0000



21.4041, 0.3127, 0.3290



# Same Dimension

The Same Dimension uses a secret algorithm to generate beautiful new colors.



44.6247, 0.3412, 0.3291



71.5293, 0.3478, 0.3291



50.8136, 0.3383, 0.3483



11.2145, 0.3290, 0.3291



8.0817, 0.6400, 0.3300



0.4172, 0.6399, 0.3301

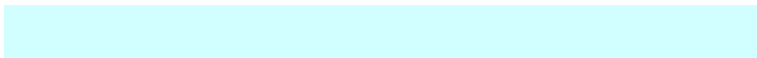


# Inverse Universe

The Inverse Universe completely reimagines the original color for something new.



55.1375, 0.2897, 0.3289



92.2957, 0.2855, 0.3289



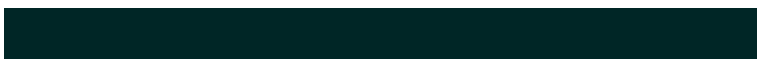
48.2427, 0.2889, 0.3090



12.7261, 0.2984, 0.3289



29.8966, 0.2246, 0.3286

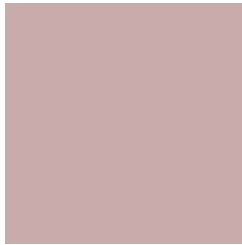


1.5426, 0.2246, 0.3286



# Previews

## White Background



This preview shows how the Yxy color 44.6227, 0.3412, 0.3291 looks on a white background.

## Color Contrast Check

Large Text (above 18pt) WCAG AA × Fail

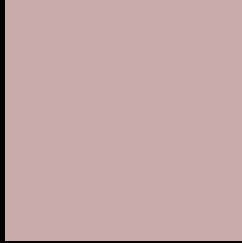
Any Text WCAG AA × Fail

Large Text (above 18pt) WCAG AAA × Fail

Any Text WCAG AAA × Fail



# Black Background



This preview shows how the Yxy color 44.6227, 0.3412, 0.3291 looks on a black background.

## Color Contrast Check

Large Text (above 18pt) WCAG AA ✓ Pass

Any Text WCAG AA ✓ Pass

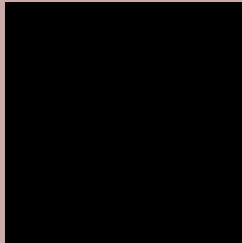
Large Text (above 18pt) WCAG AAA ✓ Pass

Any Text WCAG AAA ✓ Pass

If you want to check with other color combinations, try the [Color Contrast Checker](#).

**Yxy 44.6227, 0.3412, 0.3291**

## **Background**



This preview shows how black text looks on a background with the Yxy color 44.6227, 0.3412, 0.3291.



This preview shows how white text looks on a background with the Yxy color 44.6227, 0.3412, 0.3291.

# Color Blindness Simulation

Color vision deficiency is a very complex topic, and I could not describe the different causes any better than Wikipedia does, so if you want to learn more, you should check out their [article about color blindness](#).

## Dichromacy



### Original Color

44.6227, 0.3412, 0.3291

### Protanopia

44.8810, 0.3186, 0.3330

### Deuteranopia

44.4511, 0.3373, 0.3303



## Tritanopia

44.4498, 0.3327, 0.3129

# Trichromacy



## Original Color

44.6227, 0.3412, 0.3291

## Protanomaly

44.5348, 0.3260, 0.3303

## Deuteranomaly

44.5874, 0.3383, 0.3303

## Tritanomaly

44.6603, 0.3361, 0.3191

# Monochromacy



## Original Color

44.6227, 0.3412, 0.3291

## Achromatopsia

45.6411, 0.3127, 0.3290

## Achromatomaly

45.3100, 0.3224, 0.3290

# CSS Examples

## Text

The CSS property to change the color of the text to Yxy 44.6227, 0.3412, 0.3291 is called "color". The color property can be set on classes, ids or directly on the HTML element.

This example shows how text in the color `rgb(202, 171, 171)` looks like.

```
.text, #text, p{  
    color:rgb(202, 171, 171)  
}
```

If you want to add a text shadow in that color use the text-shadow property, you can generate a text shadow directly with our [CSS Text Shadow Generator](#).

Here you see how black text with a 4 pixel rgb(202, 171, 171) colored shadow looks like.

```
.shadow{ text-shadow: 4px 4px 2px rgb(202, 171, 171) }
```

## Border

The CSS property to change the border of an element to Yxy 44.6227, 0.3412, 0.3291 is called "border". The border property can be set on classes, ids or directly on the HTML element.

This example shows the color as border, it can be applied via the CSS property "border" or "border-color".

```
.border, #border, table{ border:4px solid rgb(202, 171, 171) }
```

If only the border color should be changed use the property `border-color`.

```
.border{ border-color:rgb(202, 171, 171) }
```

If you want to add a box shadow in that color use:

Here you see how a box with a 4 pixel `rgb(202, 171, 171)` colored shadow looks like.

```
.boxshadow{ -moz-box-shadow:4px 4px 4px  
4px rgb(202, 171, 171); -webkit-box-  
shadow:4px 4px 4px 4px rgb(202, 171, 171);  
box-shadow:4px 4px 4px 4px rgb(202, 171,  
171) }
```



# Background

The CSS property to change the background color of an element to Yxy 44.6227, 0.3412, 0.3291 is called "background". The background property can be set on classes, ids or directly on the HTML element.

```
.background, #background, body{  
background: rgb(202, 171, 171) }
```

If only the background color should be changed can be used:

```
.background{ background-color: rgb(202,  
171, 171) }
```

This example shows the color as background, it is applied via the CSS property "background".

To optimize and compress your CSS code, you can use our [online CSS compressor and optimizer](#) based on csstidy. If you want to create a linear or radial gradient as background or border, check our [CSS Gradient Generator](#).

Hey! You found this booklet interesting? Support Converting Colors with the new Membership Option!

The pro membership hides all ads, plus gives you double the colors in the color bucket, and more awesome pro features!

**[Learn more, Memberships starting at \\$2.50/m!](#)**

**Follow me  
on Twitter!**

@ConvertingColor