

# Converting Colors

$Yxy(44.5995, 0.3830, 0.3206)$

Have a look what the booklet for  
Yxy(44.5995, 0.3830, 0.3206)  
contains.

<b>Yxy(44.6634, 0.3831, 0.3202)</b> .....	3
<b><i>Conversions</i></b> .....	4
<b><i>Details</i></b> .....	6
<b><i>Harmonies</i></b> .....	12
<b><i>Previews</i></b> .....	24
<b><i>Color Blindness Simulation</i></b> .....	27
<b><i>CSS Examples</i></b> .....	30

# Color

**Yxy(44.6634, 0.3831, 0.3202)**

# Conversions

## Conversions Part 1

Format	Color
Hex	EC9DA5
RGB	236, 157, 165
RGB Percent	93%, 62%, 65%
CMY	0.0745, 0.3843, 0.3531
CMYK	0.00, 0.33, 0.30, 0.07
HSL	354°, 68%, 77%
HSV	354°, 33%, 93%
XYZ	53.4371, 44.6634, 41.3855
YIQ	181.5330, 44.5160, 19.2360

# Conversions

## Conversions Part 2

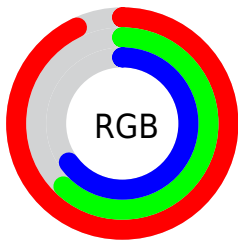
<b>Format</b>	<b>Color</b>
R <sub>Y</sub> B	236, 157, 165
Decimal	15506853
CIE Lab	72.67, 30.47, 8.00
CIE LCh	73, 31.508, 14.716
Yxy	44.6634, 0.3831, 0.3202
Android (android.graphics.Color)	4293696933 (0xFFEC9DA5)
YUV	181.5330, -8.1508, 47.7676
Hunter-Lab	66.8307, 25.7729, 10.0656

# Details

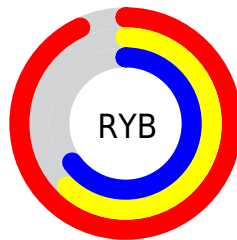
The Yxy color **44.6634, 0.3831, 0.3202** is a light color, and the websafe version is hex **FF9999**. A complement of this color would be **72.7617, 0.2692, 0.3383**, and the grayscale version is **46.5394, 0.3127, 0.3290**.

A 20% lighter version of the original color is **73.5143, 0.3393, 0.3210**, and **20.7604, 0.4036, 0.3175** is the 20% darker color. If you saturate the color by 10%, you get **36.7261, 0.4156, 0.3177**, and if you desaturate by 10%, it is **54.2754, 0.3565, 0.3229**.

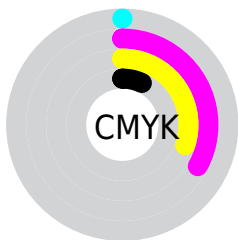
# Distribution



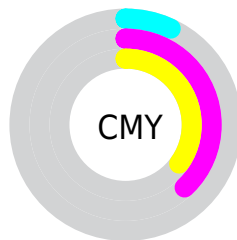
- Red (93%)
- Green (62%)
- Blue (65%)



- Red (93%)
- Yellow (62%)
- Blue (65%)



- Cyan (0%)
- Magenta (33%)
- Yellow (30%)
- Black (7%)



- Cyan (7%)
- Magenta (38%)
- Yellow (35%)

# Brightness & Saturation Gradients

These gradients show how the Yxy color 44.6634, 0.3831, 0.3202 changes by changing the brightness by 10 percent. The first figure shows a shift by +10% for each color and the second figure -10%.

Similar to the brightness gradients but the following saturation gradients show a change of the Yxy color 44.6634, 0.3831, 0.3202 by changing the saturation by 10% instead.




 44.6634, 0.3831,  
0.3202

 44.6634, 0.3831,  
0.3202


365.4086, 0.3474,  
0.3253

 31.1924, 0.3922,  
0.3187


 82.2151, 0.3700,  
0.3222

 20.7454, 0.4038,  
0.3167


 107.0645, 0.3651,  
0.3229

 12.9380, 0.4195,  
0.3137


136.4756, 0.3610,  
0.3235

 7.3859, 0.4415,  
0.3092

170.8326, 0.3575,  
0.3240

 3.7046, 0.4745,  
0.3017

210.5200, 0.3544,  
0.3244

 1.5097, 0.5288,  
0.2872

255.9223, 0.3518,

 0.2956, 0.7784,

0.3247

0.2216

307.4236, 0.3495,  
0.3250

0.0000, 0.0000,  
0.0000

44.6634, 0.3831,  
0.3202

44.6634, 0.3831,  
0.3202

36.7261, 0.4156,  
0.3177

54.2754, 0.3565,  
0.3229

30.3618, 0.4542,  
0.3156

65.6435, 0.3351,  
0.3256

25.4673, 0.4978,  
0.3146

78.8516, 0.3179,  
0.3282

21.9248, 0.5433,  
0.3152

93.9763, 0.3040,  
0.3305

19.5984, 0.5851,  
0.3176

96.5722, 0.3011,  
0.3290

■ 18.3232, 0.6168,  
0.3219

■ 17.8972, 0.6304,  
0.3247

# Harmonies

## Analogous

The Analogous color harmony consists of three colors that are next to each other on the color wheel.



44.6634, 0.3444, 0.2880



44.6634, 0.3831, 0.3202



44.6634, 0.4015, 0.3561

# Triad

The Triadic color harmony groups three colors that are evenly spaced from another and form a triangle on the color wheel.



44.6634, 0.3831, 0.3202



44.6634, 0.3215, 0.4046



44.6634, 0.2363, 0.2656

# Complementary

The Complementary color scheme is a pair of colors which are on the opposite of each other on the color wheel.



44.6634, 0.3831, 0.3202



72.7617, 0.2692, 0.3383

# Split Complementary

Split-complementary colors differ from the complementary color scheme. The scheme consists of three colors, the original color and two neighbors of the complement color.



44.6634, 0.2314, 0.2918



44.6634, 0.3831, 0.3202



44.6634, 0.2785, 0.3756

# Square

The Square scheme is like the rectangle color scheme, but the four colors are evenly spaced on the color wheel.



44.6634, 0.3831, 0.3202



44.6634, 0.3640, 0.4080



44.6634, 0.2461, 0.3323



44.6634, 0.2600, 0.2571



# Rectangle

The Rectangle color scheme consists of four colors that form a rectangle on the color wheel.



44.6634, 0.3831, 0.3202



44.6634, 0.3993, 0.3787



44.6634, 0.2461, 0.3323



44.6634, 0.2325, 0.2724

# Sweetspot

The Sweet Spot groups the original color and five complimentary colors.



44.6655, 0.3831, 0.3202



83.4058, 0.3287, 0.3265



46.4692, 0.3087, 0.2439



17.3921, 0.3313, 0.3261



0.0000, 0.0000, 0.0000



21.4041, 0.3127, 0.3290



# Same Dimension

The Same Dimension uses a secret algorithm to generate beautiful new colors.



44.6655, 0.3831, 0.3202



46.6966, 0.4042, 0.3185



55.9304, 0.3798, 0.3631



15.0787, 0.3277, 0.3267



9.8742, 0.6282, 0.3234



0.7837, 0.6020, 0.3090



# Inverse Universe

The Inverse Universe completely reimagines the original color for something new.



44.6655, 0.3831, 0.3202



46.6966, 0.4042, 0.3185



57.2325, 0.2605, 0.2920



15.0787, 0.3277, 0.3267



9.8742, 0.6282, 0.3234



0.7837, 0.6020, 0.3090



# Previews

## White Background



This preview shows how the Yxy color 44.6634, 0.3831, 0.3202 looks on a white background.

## Color Contrast Check

Large Text (above 18pt) WCAG AA × Fail

Any Text WCAG AA × Fail

Large Text (above 18pt) WCAG AAA × Fail

Any Text WCAG AAA × Fail



# Black Background



This preview shows how the Yxy color 44.6634, 0.3831, 0.3202 looks on a black background.

## Color Contrast Check

Large Text (above 18pt) WCAG AA ✓ Pass

Any Text WCAG AA ✓ Pass

Large Text (above 18pt) WCAG AAA ✓ Pass

Any Text WCAG AAA ✓ Pass

If you want to check with other color combinations, try the [Color Contrast Checker](#).

**Yxy 44.6634, 0.3831, 0.3202**

## Background



This preview shows how black text looks on a background with the Yxy color 44.6634, 0.3831, 0.3202.



This preview shows how white text looks on a background with the Yxy color 44.6634, 0.3831, 0.3202.

# Color Blindness Simulation

Color vision deficiency is a very complex topic, and I could not describe the different causes any better than Wikipedia does, so if you want to learn more, you should check out their [article about color blindness](#).

## Dichromacy



### Original Color

44.6634, 0.3831, 0.3202

### Protanopia

44.9205, 0.3178, 0.3317

### Deuteranopia

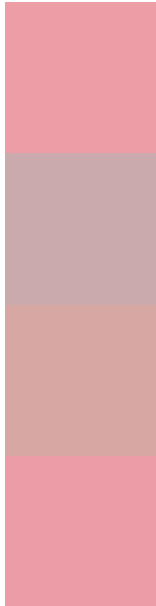
44.6702, 0.3491, 0.3418



## Tritanopia

44.4370, 0.3804, 0.3156

# Trichromacy



**Original Color**

44.6634, 0.3831, 0.3202

**Protanomaly**

44.2846, 0.3405, 0.3266

**Deuteranomaly**

44.5779, 0.3609, 0.3340

**Tritanomaly**

44.3998, 0.3814, 0.3168

# Monochromacy



**Original Color**

44.6634, 0.3831, 0.3202

**Achromatopsia**

46.7784, 0.3127, 0.3290

**Achromatomaly**

45.5783, 0.3364, 0.3253

# CSS Examples

## Text

The CSS property to change the color of the text to Yxy 44.6634, 0.3831, 0.3202 is called "color". The color property can be set on classes, ids or directly on the HTML element.

This example shows how text in the color `rgb(236, 157, 165)` looks like.

```
.text, #text, p{  
    color:rgb(236, 157, 165)  
}
```

If you want to add a text shadow in that color use the text-shadow property, you can generate a text shadow directly with our [CSS Text Shadow Generator](#).

Here you see how black text with a 4 pixel rgb(236, 157, 165) colored shadow looks like.

```
.shadow{ text-shadow: 4px 4px 2px rgb(236, 157, 165) }
```

## Border

The CSS property to change the border of an element to Yxy 44.6634, 0.3831, 0.3202 is called "border". The border property can be set on classes, ids or directly on the HTML element.

This example shows the color as border, it can be applied via the CSS property "border" or "border-color".

```
.border, #border, table{ border:4px solid rgb(236, 157, 165) }
```

If only the border color should be changed use the property `border-color`.

```
.border{ border-color:rgb(236, 157, 165) }
```

If you want to add a box shadow in that color use:

Here you see how a box with a 4 pixel `rgb(236, 157, 165)` colored shadow looks like.

```
.boxshadow{ -moz-box-shadow:4px 4px 4px  
4px rgb(236, 157, 165); -webkit-box-  
shadow:4px 4px 4px 4px rgb(236, 157, 165);  
box-shadow:4px 4px 4px 4px rgb(236, 157,  
165) }
```



# Background

The CSS property to change the background color of an element to Yxy 44.6634, 0.3831, 0.3202 is called "background". The background property can be set on classes, ids or directly on the HTML element.

```
.background, #background, body{  
background: rgb(236, 157, 165) }
```

If only the background color should be changed can be used:

```
.background{ background-color: rgb(236,  
157, 165) }
```

This example shows the color as background, it is applied via the CSS property "background".

To optimize and compress your CSS code, you can use our [online CSS compressor and optimizer](#) based on csstidy. If you want to create a linear or radial gradient as background or border, check our [CSS Gradient Generator](#).

Hey! You found this booklet interesting? Support Converting Colors with the new Membership Option!

The pro membership hides all ads, plus gives you double the colors in the color bucket, and more awesome pro features!

**[Learn more, Memberships starting at \\$2.50/m!](#)**

**Follow me  
on Twitter!**

@ConvertingColor