

Converting Colors

$Yxy(44.6419, 0.3465, 0.3214)$

Have a look what the booklet for
Yxy(44.6419, 0.3465, 0.3214)
contains.

Yxy(44.7629, 0.3466, 0.3217)	3
Conversions	4
Details	6
Harmonies	12
Previews	24
Color Blindness Simulation	27
CSS Examples	30

Color

Yxy(44.7629, 0.3466, 0.3217)

Conversions

Conversions Part 1

Format	Color
Hex	D2A8AE
RGB	210, 168, 174
RGB Percent	82%, 66%, 68%
CMY	0.1764, 0.3412, 0.3176
CMYK	0.00, 0.20, 0.17, 0.18
HSL	351°, 32%, 74%
HSV	351°, 20%, 82%
XYZ	48.2276, 44.7629, 46.1543
YIQ	181.2420, 23.1060, 10.7700

Conversions

Conversions Part 2

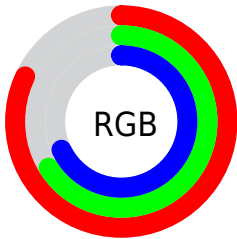
Format	Color
R _Y B	210, 168, 174
Decimal	13805742
CIE Lab	72.74, 16.32, 2.75
CIE LCh	73, 16.551, 9.578
Yxy	44.7629, 0.3466, 0.3217
Android (android.graphics.Color)	4291995822 (0xFFD2A8AE)
YUV	181.2420, -3.5703, 25.2208
Hunter-Lab	66.9051, 11.5854, 5.9325

Details

The Yxy color **44.7629, 0.3466, 0.3217** is a light color, and the websafe version is hex **CC9999**. A complement of this color would be **58.7883, 0.2867, 0.3365**, and the grayscale version is **46.3591, 0.3127, 0.3290**.

A 20% lighter version of the original color is **79.6925, 0.3315, 0.3231**, and **20.8645, 0.3562, 0.3193** is the 20% darker color. If you saturate the color by 10%, you get **36.9713, 0.3698, 0.3178**, and if you desaturate by 10%, it is **53.9049, 0.3278, 0.3255**.

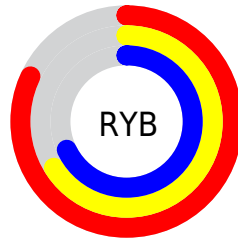
Distribution



Red (82%)

Green (66%)

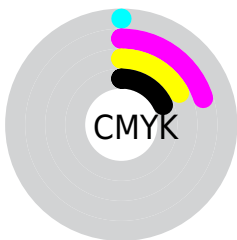
Blue (68%)



Red (82%)

Yellow (66%)

Blue (68%)

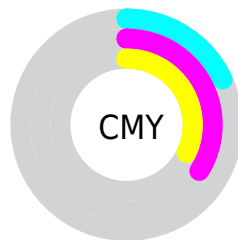


Cyan (0%)

Magenta (20%)

Yellow (17%)

Black (18%)



Cyan (18%)


Magenta (34%)

Yellow (32%)

Brightness & Saturation Gradients

These gradients show how the Yxy color 44.7629, 0.3466, 0.3217 changes by changing the brightness by 10 percent. The first figure shows a shift by +10% for each color and the second figure -10%.


Similar to the brightness gradients but the following saturation gradients show a change of the Yxy color 44.7629, 0.3466, 0.3217 by changing the saturation by 10% instead.


 44.7629, 0.3466,
0.3217

 44.7629, 0.3466,
0.3217


365.8124, 0.3295,
0.3255

 31.2707, 0.3509,
0.3207


 82.3645, 0.3403,
0.3231

 20.8051, 0.3565,
0.3194

 107.2427, 0.3380,
0.3236

 12.9816, 0.3641,
0.3176


136.6850, 0.3360,
0.3241

 7.4159, 0.3747,
0.3150

171.0759, 0.3343,
0.3245

 3.7235, 0.3908,
0.3109

210.7997, 0.3329,
0.3248

 1.5201, 0.4182,
0.3035

256.2408, 0.3316,

 0.3028, 0.6093,

0.3251

0.2689

307.7836, 0.3305,
0.3253

0.0000, 0.0000,
0.0000

44.7629, 0.3466,
0.3217

44.7629, 0.3466,
0.3217

36.9713, 0.3698,
0.3178

53.9049, 0.3278,
0.3255

30.4603, 0.3983,
0.3140

64.4507, 0.3127,
0.3290

25.1630, 0.4325,
0.3107

76.4582, 0.3005,
0.3322

21.0040, 0.4721,
0.3084

89.9804, 0.2907,
0.3352

17.8994, 0.5154,
0.3078

92.4451, 0.2860,
0.3289

■ 15.7540, 0.5583,
0.3097

■ 14.4548, 0.5954,
0.3143

■ 13.7995, 0.6222,
0.3201

Harmonies

Analogous

The Analogous color harmony consists of three colors that are next to each other on the color wheel.



44.7629, 0.3257, 0.3042



44.7629, 0.3466, 0.3217



44.7629, 0.3582, 0.3416

Triad

The Triadic color harmony groups three colors that are evenly spaced from another and form a triangle on the color wheel.



44.7629, 0.3466, 0.3217



44.7629, 0.3222, 0.3687



44.7629, 0.2700, 0.2974

Complementary

The Complementary color scheme is a pair of colors which are on the opposite of each other on the color wheel.



44.7629, 0.3466, 0.3217



58.7883, 0.2867, 0.3365

Split Complementary

Split-complementary colors differ from the complementary color scheme. The scheme consists of three colors, the original color and two neighbors of the complement color.



44.7629, 0.2693, 0.3136



44.7629, 0.3466, 0.3217



44.7629, 0.2988, 0.3559

Square

The Square scheme is like the rectangle color scheme, but the four colors are evenly spaced on the color wheel.



44.7629, 0.3466, 0.3217



44.7629, 0.3437, 0.3695



44.7629, 0.2796, 0.3353



44.7629, 0.2817, 0.2901

Rectangle

The Rectangle color scheme consists of four colors that form a rectangle on the color wheel.



44.7629, 0.3466, 0.3217



44.7629, 0.3589, 0.3539



44.7629, 0.2796, 0.3353



44.7629, 0.2685, 0.3019

Sweetspot

The Sweet Spot groups the original color and five complimentary colors.



44.7649, 0.3466, 0.3217



89.8082, 0.3215, 0.3269



45.4549, 0.3095, 0.2788



18.9958, 0.3225, 0.3267



0.0000, 0.0000, 0.0000



21.4041, 0.3127, 0.3290

Same Dimension

The Same Dimension uses a secret algorithm to generate beautiful new colors.



44.7649, 0.3466, 0.3217



64.0465, 0.3559, 0.3201



50.2770, 0.3487, 0.3470



11.8355, 0.3268, 0.3257



8.4244, 0.6195, 0.3186



0.4801, 0.5758, 0.2946

Inverse Universe

The Inverse Universe completely reimagines the original color for something new.



44.7649, 0.3466, 0.3217



64.0465, 0.3559, 0.3201



52.1491, 0.2818, 0.3103



11.8355, 0.3268, 0.3257



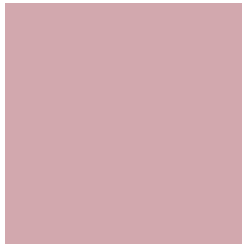
8.4244, 0.6195, 0.3186



0.4801, 0.5758, 0.2946

Previews

White Background



This preview shows how the Yxy color 44.7629, 0.3466, 0.3217 looks on a white background.

Color Contrast Check

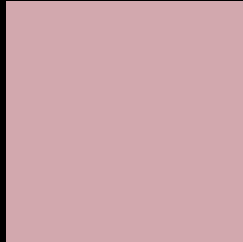
Large Text (above 18pt) WCAG AA × Fail

Any Text WCAG AA × Fail

Large Text (above 18pt) WCAG AAA × Fail

Any Text WCAG AAA × Fail

Black Background



This preview shows how the Yxy color 44.7629, 0.3466, 0.3217 looks on a black background.

Color Contrast Check

Large Text (above 18pt) WCAG AA ✓ Pass

Any Text WCAG AA ✓ Pass

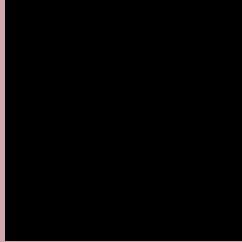
Large Text (above 18pt) WCAG AAA ✓ Pass

Any Text WCAG AAA ✓ Pass

If you want to check with other color combinations, try the [Color Contrast Checker](#).

Yxy 44.7629, 0.3466, 0.3217

Background



This preview shows how black text looks on a background with the Yxy color 44.7629, 0.3466, 0.3217.



This preview shows how white text looks on a background with the Yxy color 44.7629, 0.3466, 0.3217.

Color Blindness Simulation

Color vision deficiency is a very complex topic, and I could not describe the different causes any better than Wikipedia does, so if you want to learn more, you should check out their [article about color blindness](#).

Dichromacy



Original Color

44.7629, 0.3466, 0.3217

Protanopia

44.9598, 0.3137, 0.3264

Deuteranopia

44.9100, 0.3354, 0.3291



Tritanopia

44.7816, 0.3422, 0.3133

Trichromacy



Original Color

44.7629, 0.3466, 0.3217

Protanomaly

44.6929, 0.3255, 0.3239

Deuteranomaly

44.6995, 0.3395, 0.3266

Tritanomaly

44.7007, 0.3441, 0.3157

Monochromacy



Original Color

44.7629, 0.3466, 0.3217

Achromatopsia

46.2077, 0.3127, 0.3290

Achromatomaly

45.4715, 0.3252, 0.3265

CSS Examples

Text

The CSS property to change the color of the text to Yxy 44.7629, 0.3466, 0.3217 is called "color". The color property can be set on classes, ids or directly on the HTML element.

This example shows how text in the color `rgb(210, 168, 174)` looks like.

```
.text, #text, p{  
    color:rgb(210, 168, 174)  
}
```

If you want to add a text shadow in that color use the text-shadow property, you can generate a text shadow directly with our [CSS Text Shadow Generator](#).

Here you see how black text with a 4 pixel rgb(210, 168, 174) colored shadow looks like.

```
.shadow{ text-shadow: 4px 4px 2px rgb(210, 168, 174) }
```

Border

The CSS property to change the border of an element to Yxy 44.7629, 0.3466, 0.3217 is called "border". The border property can be set on classes, ids or directly on the HTML element.

This example shows the color as border, it can be applied via the CSS property "border" or "border-color".

```
.border, #border, table{ border:4px solid rgb(210, 168, 174) }
```

If only the border color should be changed use the property `border-color`.

```
.border{ border-color:rgb(210, 168, 174) }
```

If you want to add a box shadow in that color use:

Here you see how a box with a 4 pixel `rgb(210, 168, 174)` colored shadow looks like.

```
.boxshadow{ -moz-box-shadow:4px 4px 4px 4px rgb(210, 168, 174); -webkit-box-shadow:4px 4px 4px 4px rgb(210, 168, 174); box-shadow:4px 4px 4px 4px rgb(210, 168, 174) }
```


Background

The CSS property to change the background color of an element to Yxy 44.7629, 0.3466, 0.3217 is called "background". The background property can be set on classes, ids or directly on the HTML element.

```
.background, #background, body{  
background: rgb(210, 168, 174) }
```

If only the background color should be changed can be used:

```
.background{ background-color: rgb(210,  
168, 174) }
```

This example shows the color as background, it is applied via the CSS property "background".

To optimize and compress your CSS code, you can use our [online CSS compressor and optimizer](#) based on csstidy. If you want to create a linear or radial gradient as background or border, check our [CSS Gradient Generator](#).

Hey! You found this booklet interesting? Support Converting Colors with the new Membership Option!

The pro membership hides all ads, plus gives you double the colors in the color bucket, and more awesome pro features!

[Learn more, Memberships starting at \\$2.50/m!](#)

**Follow me
on Twitter!**

@ConvertingColor