

Converting Colors

Yxy(44.7421, 0.3175, 0.3144)

Have a look what the booklet for
Yxy(44.7421, 0.3175, 0.3144)
contains.

Yxy(44.7220, 0.3178, 0.3149)	3
<i>Conversions</i>	4
<i>Details</i>	6
<i>Harmonies</i>	12
<i>Previews</i>	24
<i>Color Blindness Simulation</i>	27
<i>CSS Examples</i>	30

Color

Yxy(44.7220, 0.3178, 0.3149)

Conversions

Conversions Part 1

Format	Color
Hex	BEAEB9
RGB	190, 174, 185
RGB Percent	75%, 68%, 73%
CMY	0.2548, 0.3177, 0.2744
CMYK	0.00, 0.08, 0.03, 0.25
HSL	319°, 11%, 71%
HSV	319°, 8%, 75%
XYZ	45.1339, 44.7220, 52.1638
YIQ	180.0380, 6.0050, 6.8130

Conversions

Conversions Part 2

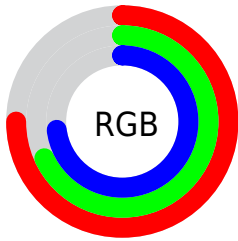
Format	Color
RYB	190, 174, 185
Decimal	12496569
CIELab	72.71, 7.72, -3.55
CIElCh	73, 8.497, 335.310
Yxy	44.7220, 0.3178, 0.3149
Android (android.graphics.Color)	4290686649 (0xFFBEAEB9)
YUV	180.0380, 2.4463, 8.7367
Hunter-Lab	66.8745, 3.4399, 0.5644

Details

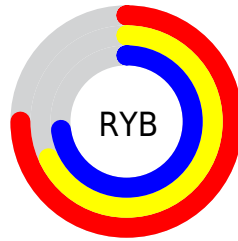
The Yxy color **44.7220, 0.3178, 0.3149** is a light color, and the websafe version is hex **CCCCCC**. A complement of this color would be **49.0891, 0.3080, 0.3435**, and the grayscale version is **45.6503, 0.3127, 0.3290**.

A 20% lighter version of the original color is **81.9823, 0.3167, 0.3170**, and **20.9034, 0.3196, 0.3116** is the 20% darker color. If you saturate the color by 10%, you get **37.6488, 0.3248, 0.2975**, and if you desaturate by 10%, it is **52.8482, 0.3118, 0.3315**.

Distribution



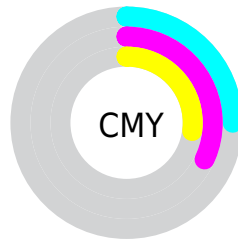
- Red (75%)
- Green (68%)
- Blue (73%)



- Red (75%)
- Yellow (68%)
- Blue (73%)



- Cyan (0%)
- Magenta (8%)
- Yellow (3%)
- Black (25%)



- Cyan (25%)
- Magenta (32%)
- Yellow (27%)

Brightness & Saturation Gradients

These gradients show how the Yxy color 44.7220, 0.3178, 0.3149 changes by changing the brightness by 10 percent. The first figure shows a shift by +10% for each color and the second figure -10%.

Similar to the brightness gradients but the following saturation gradients show a change of the Yxy color 44.7220, 0.3178, 0.3149 by changing the saturation by 10% instead.

■ 44.7220, 0.3178,
0.3149

■ 44.7220, 0.3178,
0.3149

365.6465, 0.3153,
0.3219

■ 31.2385, 0.3184,
0.3132

■ 82.3031, 0.3169,
0.3175

■ 20.7805, 0.3192,
0.3109

107.1695, 0.3165,
0.3184

■ 12.9637, 0.3203,
0.3079

136.5989, 0.3163,
0.3192

■ 7.4035, 0.3218,
0.3038

170.9759, 0.3160,
0.3199

■ 3.7157, 0.3239,
0.2976

210.6847, 0.3158,
0.3205

■ 1.5158, 0.3275,
0.2874

256.1099, 0.3156,

■ 0.2998, 0.3512,

0.3211

0.2225

307.6356, 0.3154,
0.3215

■ 0.0000, 0.0000,
0.0000

■ 44.7220, 0.3178,
0.3149

■ 44.7220, 0.3178,
0.3149

■ 37.6488, 0.3248,
0.2975

■ 52.8482, 0.3118,
0.3315

■ 31.5792, 0.3330,
0.2797

■ 62.0624, 0.3068,
0.3472

■ 26.4687, 0.3425,
0.2620

■ 72.4055, 0.3027,
0.3618

■ 22.2669, 0.3532,
0.2452

■ 83.9141, 0.2992,
0.3752

■ 18.9190, 0.3650,
0.2303

■ 87.3591, 0.2960,
0.3736

■ 16.3642, 0.3777,
0.2183

■ 87.6688, 0.2929,
0.3668

■ 14.5335, 0.3910,
0.2102

■ 87.9897, 0.2897,
0.3601

■ 13.3462, 0.4043,
0.2068

■ 88.3218, 0.2866,
0.3534

■ 12.6714, 0.4173,
0.2081

■ 88.6653, 0.2836,
0.3469

Harmonies

Analogous

The Analogous color harmony consists of three colors that are next to each other on the color wheel.



44.7220, 0.3056, 0.3095



44.7220, 0.3178, 0.3149



44.7220, 0.3288, 0.3239

Triad

The Triadic color harmony groups three colors that are evenly spaced from another and form a triangle on the color wheel.



44.7220, 0.3178, 0.3149



44.7220, 0.3300, 0.3493



44.7220, 0.2905, 0.3229

Complementary

The Complementary color scheme is a pair of colors which are on the opposite of each other on the color wheel.



44.7220, 0.3178, 0.3149



49.0891, 0.3080, 0.3435

Split Complementary

Split-complementary colors differ from the complementary color scheme. The scheme consists of three colors, the original color and two neighbors of the complement color.



44.7220, 0.2968, 0.3339



44.7220, 0.3178, 0.3149



44.7220, 0.3195, 0.3494

Square

The Square scheme is like the rectangle color scheme, but the four colors are evenly spaced on the color wheel.



44.7220, 0.3178, 0.3149



44.7220, 0.3359, 0.3437



44.7220, 0.3074, 0.3438



44.7220, 0.2901, 0.3138

Rectangle

The Rectangle color scheme consists of four colors that form a rectangle on the color wheel.



44.7220, 0.3178, 0.3149



44.7220, 0.3339, 0.3309



44.7220, 0.3074, 0.3438



44.7220, 0.2920, 0.3265

Sweetspot

The Sweet Spot groups the original color and five complimentary colors.



44.7239, 0.3178, 0.3149



88.7112, 0.3145, 0.3240



43.5492, 0.3039, 0.3080



19.2175, 0.3150, 0.3226



97.7402, 0.3127, 0.3290



20.4902, 0.3127, 0.3290

Same Dimension

The Same Dimension uses a secret algorithm to generate beautiful new colors.



44.7239, 0.3178, 0.3149



78.6772, 0.3189, 0.3119



44.4026, 0.3244, 0.3249



9.6442, 0.3184, 0.3133



8.3785, 0.4177, 0.2075



0.3395, 0.3893, 0.1918

Inverse Universe

The Inverse Universe completely reimagines the original color for something new.



44.7239, 0.3178, 0.3149



78.6772, 0.3189, 0.3119



49.4147, 0.3022, 0.3332



9.6442, 0.3184, 0.3133



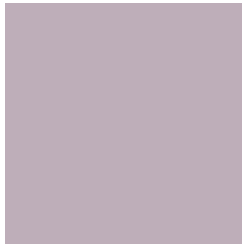
8.3785, 0.4177, 0.2075



0.3395, 0.3893, 0.1918

Previews

White Background



This preview shows how the Yxy color 44.7220, 0.3178, 0.3149 looks on a white background.

Color Contrast Check

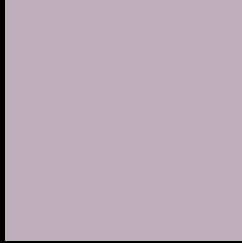
Large Text (above 18pt) WCAG AA × Fail

Any Text WCAG AA × Fail

Large Text (above 18pt) WCAG AAA × Fail

Any Text WCAG AAA × Fail

Black Background



This preview shows how the Yxy color 44.7220, 0.3178, 0.3149 looks on a black background.

Color Contrast Check

Large Text (above 18pt) WCAG AA ✓ Pass

Any Text WCAG AA ✓ Pass

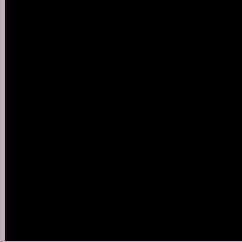
Large Text (above 18pt) WCAG AAA ✓ Pass

Any Text WCAG AAA ✓ Pass

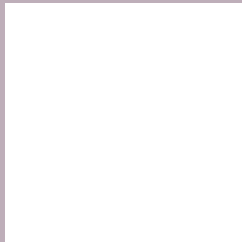
If you want to check with other color combinations, try the [Color Contrast Checker](#).

Yxy 44.7220, 0.3178, 0.3149

Background



This preview shows how black text looks on a background with the Yxy color 44.7220, 0.3178, 0.3149.



This preview shows how white text looks on a background with the Yxy color 44.7220, 0.3178, 0.3149.

Color Blindness Simulation

Color vision deficiency is a very complex topic, and I could not describe the different causes any better than Wikipedia does, so if you want to learn more, you should check out their [article about color blindness](#).

Dichromacy



Original Color

44.7220, 0.3178, 0.3149

Protanopia

44.6158, 0.3064, 0.3159

Deuteranopia

44.7274, 0.3206, 0.3138



Tritanopia

44.8071, 0.3161, 0.3124

Trichromacy



Original Color

44.7220, 0.3178, 0.3149

Protanomaly

44.6631, 0.3107, 0.3160

Deuteranomaly

44.5964, 0.3197, 0.3137

Tritanomaly

44.7644, 0.3170, 0.3137

Monochromacy



Original Color

44.7220, 0.3178, 0.3149

Achromatopsia

45.6411, 0.3127, 0.3290

Achromatomaly

45.4085, 0.3147, 0.3238

CSS Examples

Text

The CSS property to change the color of the text to Yxy 44.7220, 0.3178, 0.3149 is called "color". The color property can be set on classes, ids or directly on the HTML element.

This example shows how text in the color `rgb(190, 174, 185)` looks like.

```
.text, #text, p{  
    color:rgb(190, 174, 185)  
}
```

If you want to add a text shadow in that color use the text-shadow property, you can generate a text shadow directly with our [CSS Text Shadow Generator](#).

Here you see how black text with a 4 pixel rgb(190, 174, 185) colored shadow looks like.

```
.shadow{ text-shadow: 4px 4px 2px rgb(190, 174, 185) }
```

Border

The CSS property to change the border of an element to Yxy 44.7220, 0.3178, 0.3149 is called "border". The border property can be set on classes, ids or directly on the HTML element.

This example shows the color as border, it can be applied via the CSS property "border" or "border-color".

```
.border, #border, table{ border:4px solid rgb(190, 174, 185) }
```

If only the border color should be changed use the property `border-color`.

```
.border{ border-color:rgb(190, 174, 185) }
```

If you want to add a box shadow in that color use:

Here you see how a box with a 4 pixel `rgb(190, 174, 185)` colored shadow looks like.

```
.boxshadow{ -moz-box-shadow:4px 4px 4px  
4px rgb(190, 174, 185); -webkit-box-  
shadow:4px 4px 4px 4px rgb(190, 174, 185);  
box-shadow:4px 4px 4px 4px rgb(190, 174,  
185) }
```


Background

The CSS property to change the background color of an element to Yxy 44.7220, 0.3178, 0.3149 is called "background". The background property can be set on classes, ids or directly on the HTML element.

```
.background, #background, body{  
background: rgb(190, 174, 185) }
```

If only the background color should be changed can be used:

```
.background{ background-color: rgb(190,  
174, 185) }
```

This example shows the color as background, it is applied via the CSS property "background".

To optimize and compress your CSS code, you can use our [online CSS compressor and optimizer](#) based on csstidy. If you want to create a linear or radial gradient as background or border, check our [CSS Gradient Generator](#).

Hey! You found this booklet interesting? Support Converting Colors with the new Membership Option!

The pro membership hides all ads, plus gives you double the colors in the color bucket, and more awesome pro features!

[Learn more, Memberships starting at \\$2.50/m!](#)

**Follow me
on Twitter!**

@ConvertingColor