

Converting Colors

$Yxy(44.9246, 0.3676, 0.3677)$

Have a look what the booklet for
Yxy(44.9246, 0.3676, 0.3677)
contains.

Yxy(45.0926, 0.3676, 0.3684)	3
Conversions	4
Details	6
Harmonies	12
Previews	24
Color Blindness Simulation	27
CSS Examples	30

Color

Yxy(45.0926, 0.3676, 0.3684)

Conversions

Conversions Part 1

Format	Color
Hex	CCA8E8F
RGB	204, 174, 143
RGB Percent	80%, 68%, 56%
CMY	0.2000, 0.3176, 0.4393
CMYK	0.00, 0.15, 0.30, 0.20
HSL	31°, 37%, 68%
HSV	31°, 30%, 80%
XYZ	44.9947, 45.0926, 32.3139
YIQ	179.4360, 27.8310, -3.2810

Conversions

Conversions Part 2

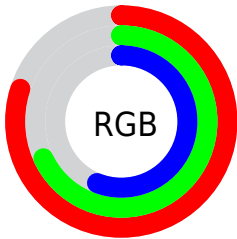
Format	Color
R_{YB}	202, 204, 143
Decimal	13414031
CIE _{Lab}	72.95, 6.27, 19.96
CIE _{LCh}	73, 20.922, 72.575
Yxy	45.0926, 0.3676, 0.3684
Android (android.graphics.Color)	4291604111 (0xFFCCA8E8F)
YUV	179.4360, -17.9629, 21.5426
Hunter-Lab	67.1510, 2.0900, 18.4746

Details

The Yxy color **45.0926, 0.3676, 0.3684** is a light color, and the websafe version is hex **CC9966**. A complement of this color would be **40.0780, 0.2652, 0.2860**, and the grayscale version is **45.4113, 0.3127, 0.3290**.

A 20% lighter version of the original color is **81.3298, 0.3526, 0.3615**, and **21.0989, 0.3827, 0.3786** is the 20% darker color. If you saturate the color by 10%, you get **40.8001, 0.3906, 0.3820**, and if you desaturate by 10%, it is **49.7910, 0.3469, 0.3547**.

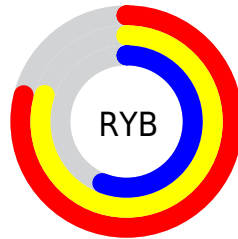
Distribution



Red (80%)

Green (68%)

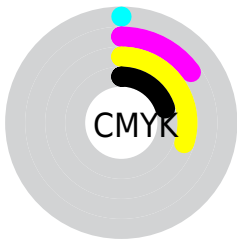
Blue (56%)



Red (79%)

Yellow (80%)

Blue (56%)

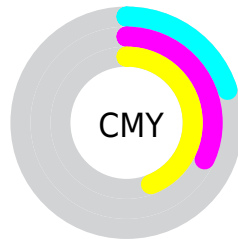


Cyan (0%)

Magenta (15%)

Yellow (30%)

Black (20%)



Cyan (20%)


Magenta (32%)


Yellow (44%)

Brightness & Saturation Gradients


These gradients show how the Yxy color 45.0926, 0.3676, 0.3684 changes by changing the brightness by 10 percent. The first figure shows a shift by +10% for each color and the second figure -10%.


Similar to the brightness gradients but the following saturation gradients show a change of the Yxy color 45.0926, 0.3676, 0.3684 by changing the saturation by 10% instead.


 45.0926, 0.3676,
0.3684

 45.0926, 0.3676,
0.3684


367.1485, 0.3399,
0.3491

 31.5304, 0.3745,
0.3731


 82.8594, 0.3575,
0.3615

 21.0030, 0.3834,
0.3789


 107.8327, 0.3537,
0.3589

 13.1262, 0.3952,
0.3865


137.3785, 0.3506,
0.3566

 7.5155, 0.4114,
0.3965

171.8811, 0.3478,
0.3547

 3.7865, 0.4350,
0.4100

211.7251, 0.3455,
0.3530

 1.5549, 0.4987,
0.4530

257.2947, 0.3434,

 0.3269, 0.5865,

0.3515

0.4135

308.9743, 0.3416,
0.3502

0.0000, 0.0000,
0.0000

45.0926, 0.3676,
0.3684

45.0926, 0.3676,
0.3684

40.8001, 0.3906,
0.3820

49.7910, 0.3469,
0.3547

36.8949, 0.4158,
0.3948

54.9008, 0.3286,
0.3415

33.3659, 0.4425,
0.4059

60.4353, 0.3126,
0.3289

30.1989, 0.4697,
0.4139

66.4050, 0.2986,
0.3171

27.3786, 0.4958,
0.4177


72.8203, 0.2863,
0.3063

 24.8875, 0.5191,
0.4163

 79.0037, 0.2813,
0.3068

 22.6996, 0.5390,
0.4101

 84.8823, 0.2820,
0.3176

 22.6804, 0.5392,
0.4101

 91.0893, 0.2827,
0.3281

 91.5771, 0.2827,
0.3289

Harmonies

Analogous

The Analogous color harmony consists of three colors that are next to each other on the color wheel.



45.0926, 0.3709, 0.3467



45.0926, 0.3676, 0.3684



45.0926, 0.3492, 0.3808

Triad

The Triadic color harmony groups three colors that are evenly spaced from another and form a triangle on the color wheel.



45.0926, 0.3676, 0.3684



45.0926, 0.2693, 0.3339



45.0926, 0.3018, 0.2848

Complementary

The Complementary color scheme is a pair of colors which are on the opposite of each other on the color wheel.



45.0926, 0.3676, 0.3684



40.0780, 0.2652, 0.2860

Split Complementary

Split-complementary colors differ from the complementary color scheme. The scheme consists of three colors, the original color and two neighbors of the complement color.



45.0926, 0.2759, 0.2802



45.0926, 0.3676, 0.3684



45.0926, 0.2578, 0.3068

Square

The Square scheme is like the rectangle color scheme, but the four colors are evenly spaced on the color wheel.



45.0926, 0.3676, 0.3684



45.0926, 0.2922, 0.3610



45.0926, 0.2602, 0.2877



45.0926, 0.3319, 0.2999

Rectangle

The Rectangle color scheme consists of four colors that form a rectangle on the color wheel.



45.0926, 0.3676, 0.3684



45.0926, 0.3312, 0.3811



45.0926, 0.2602, 0.2877



45.0926, 0.2924, 0.2820

Sweetspot

The Sweet Spot groups the original color and five complimentary colors.



45.0947, 0.3676, 0.3684



91.6208, 0.3273, 0.3404



35.5151, 0.3461, 0.2905



19.3325, 0.3298, 0.3424



0.0000, 0.0000, 0.0000



21.4041, 0.3127, 0.3290

Same Dimension

The Same Dimension uses a secret algorithm to generate beautiful new colors.



45.0947, 0.3676, 0.3684



69.9415, 0.3825, 0.3774



58.0050, 0.3575, 0.4030



12.1408, 0.3278, 0.3408



14.4624, 0.5371, 0.4117



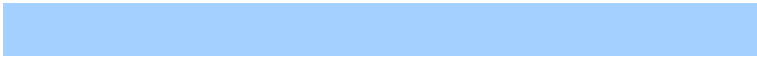
0.8978, 0.5080, 0.4348

Inverse Universe

The Inverse Universe completely reimagines the original color for something new.



40.0780, 0.2652, 0.2860



60.2996, 0.2544, 0.2748



29.8398, 0.2604, 0.2424



11.7394, 0.2983, 0.3169



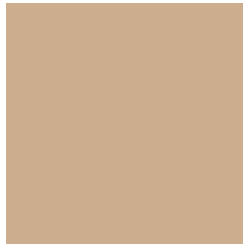
8.7007, 0.1768, 0.1563



0.6007, 0.1868, 0.1923

Previews

White Background



This preview shows how the Yxy color 45.0926, 0.3676, 0.3684 looks on a white background.

Color Contrast Check

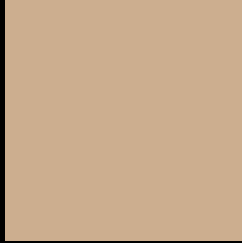
Large Text (above 18pt) WCAG AA × Fail

Any Text WCAG AA × Fail

Large Text (above 18pt) WCAG AAA × Fail

Any Text WCAG AAA × Fail

Black Background



This preview shows how the Yxy color 45.0926, 0.3676, 0.3684 looks on a black background.

Color Contrast Check

Large Text (above 18pt) WCAG AA ✓ Pass

Any Text WCAG AA ✓ Pass

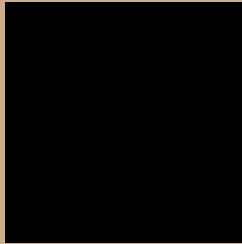
Large Text (above 18pt) WCAG AAA ✓ Pass

Any Text WCAG AAA ✓ Pass

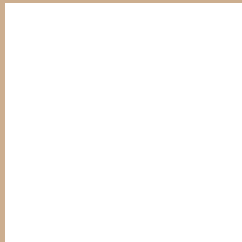
If you want to check with other color combinations, try the [Color Contrast Checker](#).

Yxy 45.0926, 0.3676, 0.3684

Background



This preview shows how black text looks on a background with the Yxy color 45.0926, 0.3676, 0.3684.



This preview shows how white text looks on a background with the Yxy color 45.0926, 0.3676, 0.3684.

Color Blindness Simulation

Color vision deficiency is a very complex topic, and I could not describe the different causes any better than Wikipedia does, so if you want to learn more, you should check out their [article about color blindness](#).

Dichromacy



Original Color

45.0926, 0.3676, 0.3684

Protanopia

45.2317, 0.3510, 0.3739

Deuteranopia

45.0435, 0.3731, 0.3653



Tritanopia

45.1632, 0.3373, 0.3132

Trichromacy



Original Color

45.0926, 0.3676, 0.3684

Protanomaly

45.0600, 0.3572, 0.3720

Deuteranomaly

45.1357, 0.3708, 0.3668

Tritanomaly

45.2184, 0.3486, 0.3328

Monochromacy



Original Color

45.0926, 0.3676, 0.3684

Achromatopsia

45.0786, 0.3127, 0.3290

Achromatomaly

44.8888, 0.3317, 0.3435

CSS Examples

Text

The CSS property to change the color of the text to Yxy 45.0926, 0.3676, 0.3684 is called "color". The color property can be set on classes, ids or directly on the HTML element.

This example shows how text in the color `rgb(204, 174, 143)` looks like.

```
.text, #text, p{  
    color:rgb(204, 174, 143)  
}
```

If you want to add a text shadow in that color use the text-shadow property, you can generate a text shadow directly with our [CSS Text Shadow Generator](#).

Here you see how black text with a 4 pixel rgb(204, 174, 143) colored shadow looks like.

```
.shadow{ text-shadow: 4px 4px 2px rgb(204, 174, 143) }
```

Border

The CSS property to change the border of an element to Yxy 45.0926, 0.3676, 0.3684 is called "border". The border property can be set on classes, ids or directly on the HTML element.

This example shows the color as border, it can be applied via the CSS property "border" or "border-color".

```
.border, #border, table{ border:4px solid rgb(204, 174, 143) }
```

If only the border color should be changed use the property border-color.

```
.border{ border-color:rgb(204, 174, 143) }
```

If you want to add a box shadow in that color use:

Here you see how a box with a 4 pixel rgb(204, 174, 143) colored shadow looks like.

```
.boxshadow{ -moz-box-shadow:4px 4px 4px  
4px rgb(204, 174, 143); -webkit-box-  
shadow:4px 4px 4px 4px rgb(204, 174, 143);  
box-shadow:4px 4px 4px 4px rgb(204, 174,  
143) }
```


Background

The CSS property to change the background color of an element to Yxy 45.0926, 0.3676, 0.3684 is called "background". The background property can be set on classes, ids or directly on the HTML element.

```
.background, #background, body{  
background: rgb(204, 174, 143) }
```

If only the background color should be changed can be used:

```
.background{ background-color: rgb(204,  
174, 143) }
```

This example shows the color as background, it is applied via the CSS property "background".

To optimize and compress your CSS code, you can use our [online CSS compressor and optimizer](#) based on csstidy. If you want to create a linear or radial gradient as background or border, check our [CSS Gradient Generator](#).

Hey! You found this booklet interesting? Support Converting Colors with the new Membership Option!

The pro membership hides all ads, plus gives you double the colors in the color bucket, and more awesome pro features!

[Learn more, Memberships starting at \\$2.50/m!](#)

**Follow me
on Twitter!**

@ConvertingColor