

Converting Colors

Yxy(44.9445, 0.3543, 0.3599)

Have a look what the booklet for
Yxy(44.9445, 0.3543, 0.3599)
contains.

Yxy(44.9001, 0.3544, 0.3600)	3
<i>Conversions</i>	4
<i>Details</i>	6
<i>Harmonies</i>	12
<i>Previews</i>	24
<i>Color Blindness Simulation</i>	27
<i>CSS Examples</i>	30

Color

Yxy(44.9001, 0.3544, 0.3600)

Conversions

Conversions Part 1

Format	Color
Hex	C6AF97
RGB	198, 175, 151
RGB Percent	78%, 69%, 59%
CMY	0.2236, 0.3137, 0.4078
CMYK	0.00, 0.12, 0.24, 0.22
HSL	31°, 29%, 68%
HSV	31°, 24%, 78%
XYZ	44.2017, 44.9001, 35.6207
YIQ	179.1410, 21.4120, -2.5880

Conversions

Conversions Part 2

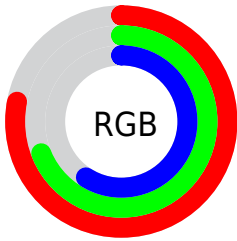
Format	Color
R_{YB}	196, 198, 151
Decimal	13021079
CIE _{Lab}	72.83, 4.51, 15.34
CIE _{LCh}	73, 15.988, 73.621
Yxy	44.9001, 0.3544, 0.3600
Android (android.graphics.Color)	4291211159 (0xFFC6AF97)
YUV	179.1410, -13.8735, 16.5393
Hunter-Lab	67.0075, 0.4847, 15.3871

Details

The Yxy color **44.9001, 0.3544, 0.3600** is a light color, and the websafe version is hex **CC9999**. A complement of this color would be **40.9233, 0.2754, 0.2959**, and the grayscale version is **45.2257, 0.3127, 0.3290**.

A 20% lighter version of the original color is **82.2614, 0.3469, 0.3543**, and **21.0153, 0.3670, 0.3693** is the 20% darker color. If you saturate the color by 10%, you get **40.6765, 0.3759, 0.3738**, and if you desaturate by 10%, it is **49.5062, 0.3353, 0.3465**.

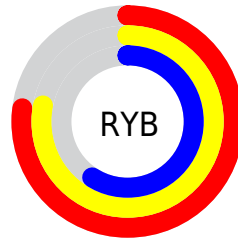
Distribution



Red (78%)

Green (69%)

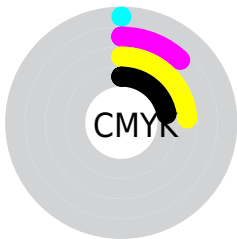
Blue (59%)



Red (77%)

Yellow (78%)

Blue (59%)

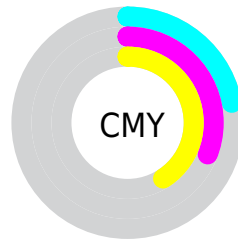


Cyan (0%)

Magenta (12%)

Yellow (24%)

Black (22%)



Cyan (22%)


Magenta (31%)


Yellow (41%)

Brightness & Saturation Gradients


These gradients show how the Yxy color 44.9001, 0.3544, 0.3600 changes by changing the brightness by 10 percent. The first figure shows a shift by +10% for each color and the second figure -10%.


Similar to the brightness gradients but the following saturation gradients show a change of the Yxy color 44.9001, 0.3544, 0.3600 by changing the saturation by 10% instead.


 44.9001, 0.3544,
0.3600

 44.9001, 0.3544,
0.3600


366.3688, 0.3334,
0.3446

 31.3787, 0.3597,
0.3638


 82.5705, 0.3467,
0.3545

 20.8874, 0.3665,
0.3686


 107.4883, 0.3438,
0.3524

 13.0417, 0.3756,
0.3748


136.9737, 0.3414,
0.3506

 7.4573, 0.3883,
0.3834

171.4112, 0.3393,
0.3491

 3.7497, 0.4072,
0.3956

211.1850, 0.3375,
0.3477

 1.5346, 0.4470,
0.4226

256.6796, 0.3360,

 0.3129, 0.5656,

0.3466

0.4344

308.2794, 0.3346,
0.3456

0.0000, 0.0000,
0.0000

44.9001, 0.3544,
0.3600

44.9001, 0.3544,
0.3600

40.6765, 0.3759,
0.3738

49.5062, 0.3353,
0.3465

36.8181, 0.3997,
0.3872

54.4990, 0.3184,
0.3336

33.3154, 0.4254,
0.3995

59.8906, 0.3037,
0.3215

30.1558, 0.4522,
0.4097

65.6907, 0.2908,
0.3103

27.3260, 0.4790,
0.4163

71.9083, 0.2796,
0.2999

■ 24.8112, 0.5041,
0.4184

■ 77.5620, 0.2777,
0.3054

■ 22.5944, 0.5260,
0.4150

■ 83.1991, 0.2784,
0.3160

■ 21.3402, 0.5382,
0.4109

■ 89.1417, 0.2792,
0.3263

■ 90.7432, 0.2794,
0.3289

Harmonies

Analogous

The Analogous color harmony consists of three colors that are next to each other on the color wheel.



44.9001, 0.3572, 0.3437



44.9001, 0.3544, 0.3600



44.9001, 0.3402, 0.3686

Triad

The Triadic color harmony groups three colors that are evenly spaced from another and form a triangle on the color wheel.



44.9001, 0.3544, 0.3600



44.9001, 0.2788, 0.3322



44.9001, 0.3053, 0.2950

Complementary

The Complementary color scheme is a pair of colors which are on the opposite of each other on the color wheel.



44.9001, 0.3544, 0.3600



40.9233, 0.2754, 0.2959

Split Complementary

Split-complementary colors differ from the complementary color scheme. The scheme consists of three colors, the original color and two neighbors of the complement color.



44.9001, 0.2850, 0.2912



44.9001, 0.3544, 0.3600



44.9001, 0.2702, 0.3117

Square

The Square scheme is like the rectangle color scheme, but the four colors are evenly spaced on the color wheel.



44.9001, 0.3544, 0.3600



44.9001, 0.2964, 0.3526



44.9001, 0.2724, 0.2970



44.9001, 0.3283, 0.3070

Rectangle

The Rectangle color scheme consists of four colors that form a rectangle on the color wheel.



44.9001, 0.3544, 0.3600



44.9001, 0.3264, 0.3683



44.9001, 0.2724, 0.2970



44.9001, 0.2980, 0.2927

Sweetspot

The Sweet Spot groups the original color and five complimentary colors.



44.9021, 0.3544, 0.3600



93.4591, 0.3239, 0.3379



37.2166, 0.3376, 0.2989



19.8869, 0.3249, 0.3387



0.0000, 0.0000, 0.0000



21.4041, 0.3127, 0.3290

Same Dimension

The Same Dimension uses a secret algorithm to generate beautiful new colors.



44.9021, 0.3544, 0.3600



75.9322, 0.3642, 0.3665



54.6175, 0.3481, 0.3876



11.5179, 0.3277, 0.3408



14.0528, 0.5362, 0.4125



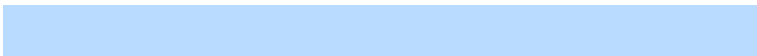
0.8101, 0.5055, 0.4369

Inverse Universe

The Inverse Universe completely reimagines the original color for something new.



40.9233, 0.2754, 0.2959



67.7741, 0.2677, 0.2883



32.7950, 0.2727, 0.2628



11.1296, 0.2983, 0.3169



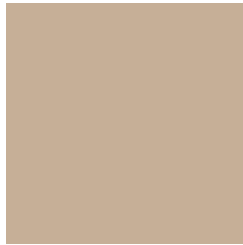
8.3622, 0.1766, 0.1557



0.5409, 0.1873, 0.1942

Previews

White Background



This preview shows how the Yxy color 44.9001, 0.3544, 0.3600 looks on a white background.

Color Contrast Check

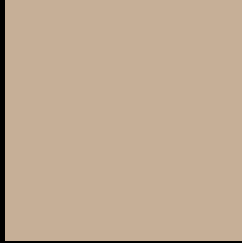
Large Text (above 18pt) WCAG AA × Fail

Any Text WCAG AA × Fail

Large Text (above 18pt) WCAG AAA × Fail

Any Text WCAG AAA × Fail

Black Background



This preview shows how the Yxy color 44.9001, 0.3544, 0.3600 looks on a black background.

Color Contrast Check

Large Text (above 18pt) WCAG AA ✓ Pass

Any Text WCAG AA ✓ Pass

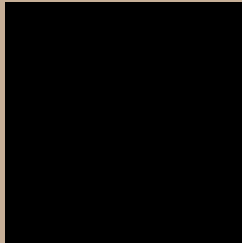
Large Text (above 18pt) WCAG AAA ✓ Pass

Any Text WCAG AAA ✓ Pass

If you want to check with other color combinations, try the [Color Contrast Checker](#).

Yxy 44.9001, 0.3544, 0.3600

Background



This preview shows how black text looks on a background with the Yxy color 44.9001, 0.3544, 0.3600.



This preview shows how white text looks on a background with the Yxy color 44.9001, 0.3544, 0.3600.

Color Blindness Simulation

Color vision deficiency is a very complex topic, and I could not describe the different causes any better than Wikipedia does, so if you want to learn more, you should check out their [article about color blindness](#).

Dichromacy



Original Color

44.9001, 0.3544, 0.3600

Protanopia

44.8321, 0.3426, 0.3621

Deuteranopia

44.8939, 0.3620, 0.3543



Tritanopia

44.7667, 0.3299, 0.3117

Trichromacy



Original Color

44.9001, 0.3544, 0.3600

Protanomaly

44.9177, 0.3474, 0.3618

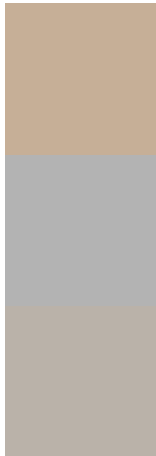
Deuteranomaly

44.8506, 0.3588, 0.3558

Tritanomaly

44.9011, 0.3392, 0.3291

Monochromacy



Original Color

44.9001, 0.3544, 0.3600

Achromatopsia

45.0786, 0.3127, 0.3290

Achromatomaly

45.1445, 0.3272, 0.3409

CSS Examples

Text

The CSS property to change the color of the text to Yxy 44.9001, 0.3544, 0.3600 is called "color". The color property can be set on classes, ids or directly on the HTML element.

This example shows how text in the color `rgb(198, 175, 151)` looks like.

```
.text, #text, p{  
    color:rgb(198, 175, 151)  
}
```

If you want to add a text shadow in that color use the text-shadow property, you can generate a text shadow directly with our [CSS Text Shadow Generator](#).

Here you see how black text with a 4 pixel rgb(198, 175, 151) colored shadow looks like.

```
.shadow{ text-shadow: 4px 4px 2px rgb(198, 175, 151) }
```

Border

The CSS property to change the border of an element to Yxy 44.9001, 0.3544, 0.3600 is called "border". The border property can be set on classes, ids or directly on the HTML element.

This example shows the color as border, it can be applied via the CSS property "border" or "border-color".

```
.border, #border, table{ border:4px solid rgb(198, 175, 151) }
```

If only the border color should be changed use the property `border-color`.

```
.border{ border-color:rgb(198, 175, 151) }
```

If you want to add a box shadow in that color use:

Here you see how a box with a 4 pixel `rgb(198, 175, 151)` colored shadow looks like.

```
.boxshadow{ -moz-box-shadow:4px 4px 4px  
4px rgb(198, 175, 151); -webkit-box-  
shadow:4px 4px 4px 4px rgb(198, 175, 151);  
box-shadow:4px 4px 4px 4px rgb(198, 175,  
151) }
```


Background

The CSS property to change the background color of an element to Yxy 44.9001, 0.3544, 0.3600 is called "background". The background property can be set on classes, ids or directly on the HTML element.

```
.background, #background, body{  
background: rgb(198, 175, 151) }
```

If only the background color should be changed can be used:

```
.background{ background-color: rgb(198,  
175, 151) }
```

This example shows the color as background, it is applied via the CSS property "background".

To optimize and compress your CSS code, you can use our [online CSS compressor and optimizer](#) based on csstidy. If you want to create a linear or radial gradient as background or border, check our [CSS Gradient Generator](#).

Hey! You found this booklet interesting? Support Converting Colors with the new Membership Option!

The pro membership hides all ads, plus gives you double the colors in the color bucket, and more awesome pro features!

[Learn more, Memberships starting at \\$2.50/m!](#)

**Follow me
on Twitter!**

@ConvertingColor