

Converting Colors

Yxy(44.9580, 0.3327, 0.3340)

Have a look what the booklet for
Yxy(44.9580, 0.3327, 0.3340)
contains.

Yxy(45.0696, 0.3332, 0.3342)	3
<i>Conversions</i>	4
<i>Details</i>	6
<i>Harmonies</i>	12
<i>Previews</i>	24
<i>Color Blindness Simulation</i>	27
<i>CSS Examples</i>	30

Color

Yxy(45.0696, 0.3332, 0.3342)

Conversions

Conversions Part 1

Format	Color
Hex	C2AFAB
RGB	194, 175, 171
RGB Percent	76%, 69%, 67%
CMY	0.2391, 0.3137, 0.3294
CMYK	0.00, 0.10, 0.12, 0.24
HSL	10°, 16%, 72%
HSV	10°, 12%, 76%
XYZ	44.9347, 45.0696, 44.8538
YIQ	180.2250, 12.6080, 2.7840

Conversions

Conversions Part 2

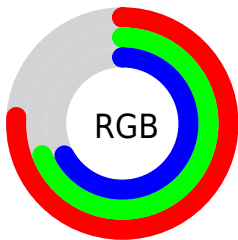
Format	Color
RYB	194, 176, 171
Decimal	12758955
CIELab	72.94, 6.16, 4.53
CIELCh	73, 7.642, 36.325
Yxy	45.0696, 0.3332, 0.3342
Android (android.graphics.Color)	4290949035 (0xFFC2AFAB)
YUV	180.2250, -4.5479, 12.0807
Hunter-Lab	67.1339, 1.9911, 7.3806

Details

The Yxy color **45.0696, 0.3332, 0.3342** is a light color, and the websafe version is hex **CCCCCC**. A complement of this color would be **49.3948, 0.2946, 0.3237**, and the grayscale version is **45.7915, 0.3127, 0.3290**.

A 20% lighter version of the original color is **83.1520, 0.3298, 0.3341**, and **21.0733, 0.3385, 0.3361** is the 20% darker color. If you saturate the color by 10%, you get **38.5104, 0.3545, 0.3389**, and if you desaturate by 10%, it is **52.4825, 0.3156, 0.3298**.

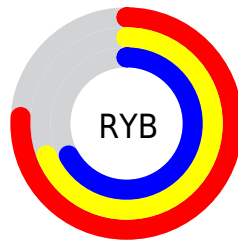
Distribution



Red (76%)

Green (69%)

Blue (67%)



Red (76%)

Yellow (69%)

Blue (67%)

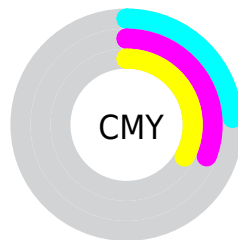


Cyan (0%)

Magenta (10%)

Yellow (12%)

Black (24%)



Cyan (24%)


Magenta (31%)


Yellow (33%)

Brightness & Saturation Gradients


These gradients show how the Yxy color 45.0696, 0.3332, 0.3342 changes by changing the brightness by 10 percent. The first figure shows a shift by +10% for each color and the second figure -10%.


Similar to the brightness gradients but the following saturation gradients show a change of the Yxy color 45.0696, 0.3332, 0.3342 by changing the saturation by 10% instead.


 45.0696, 0.3332,
0.3342

 45.0696, 0.3332,
0.3342


367.0554, 0.3229,
0.3317

 31.5123, 0.3358,
0.3348


 82.8248, 0.3294,
0.3333

 20.9892, 0.3392,
0.3356


107.7915, 0.3280,
0.3330

 13.1161, 0.3438,
0.3366


137.3301, 0.3268,
0.3327

 7.5086, 0.3502,
0.3380

171.8250, 0.3258,
0.3324

 3.7821, 0.3599,
0.3399

211.6606, 0.3249,
0.3322

 1.5525, 0.3765,
0.3428

257.2212, 0.3241,

 0.3252, 0.5587,

0.3320

0.3955

308.8914, 0.3235,
0.3318

0.0000, 0.0000,
0.0000

45.0696, 0.3332,
0.3342

45.0696, 0.3332,
0.3342

38.5104, 0.3545,
0.3389

52.4825, 0.3156,
0.3298

32.7683, 0.3802,
0.3438

60.7720, 0.3012,
0.3257

27.8129, 0.4110,
0.3485

69.9677, 0.2892,
0.3220

23.6098, 0.4469,
0.3526

80.0960, 0.2793,
0.3187

20.1217, 0.4871,
0.3555

90.2141, 0.2773,
0.3289

■ 17.3083, 0.5295,
0.3563

■ 15.1252, 0.5698,
0.3543

■ 13.5222, 0.6029,
0.3491

■ 12.6014, 0.6226,
0.3438

Harmonies

Analogous

The Analogous color harmony consists of three colors that are next to each other on the color wheel.



45.0696, 0.3274, 0.3248



45.0696, 0.3332, 0.3342



45.0696, 0.3334, 0.3425

Triad

The Triadic color harmony groups three colors that are evenly spaced from another and form a triangle on the color wheel.



45.0696, 0.3332, 0.3342



45.0696, 0.3076, 0.3420



45.0696, 0.2975, 0.3110

Complementary

The Complementary color scheme is a pair of colors which are on the opposite of each other on the color wheel.



45.0696, 0.3332, 0.3342



49.3948, 0.2946, 0.3237

Split Complementary

Split-complementary colors differ from the complementary color scheme. The scheme consists of three colors, the original color and two neighbors of the complement color.



45.0696, 0.2924, 0.3152



45.0696, 0.3332, 0.3342



45.0696, 0.2982, 0.3331

Square

The Square scheme is like the rectangle color scheme, but the four colors are evenly spaced on the color wheel.



45.0696, 0.3332, 0.3342



45.0696, 0.3185, 0.3472



45.0696, 0.2927, 0.3233



45.0696, 0.3067, 0.3115

Rectangle

The Rectangle color scheme consists of four colors that form a rectangle on the color wheel.



45.0696, 0.3332, 0.3342



45.0696, 0.3303, 0.3462



45.0696, 0.2927, 0.3233



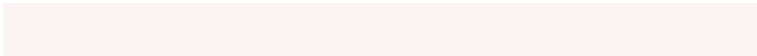
45.0696, 0.2953, 0.3119

Sweetspot

The Sweet Spot groups the original color and five complimentary colors.



45.0716, 0.3332, 0.3342



91.9768, 0.3192, 0.3307



44.3227, 0.3173, 0.3048



19.9103, 0.3205, 0.3311



0.0000, 0.0000, 0.0000



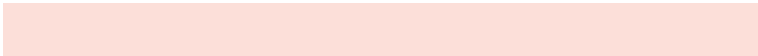
21.4041, 0.3127, 0.3290

Same Dimension

The Same Dimension uses a secret algorithm to generate beautiful new colors.



45.0716, 0.3332, 0.3342



78.7019, 0.3378, 0.3353



49.6813, 0.3314, 0.3485



10.3544, 0.3285, 0.3331



8.3668, 0.6208, 0.3453



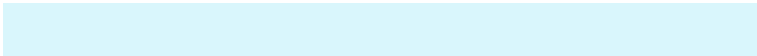
0.4508, 0.5808, 0.3770

Inverse Universe

The Inverse Universe completely reimagines the original color for something new.



49.3948, 0.2946, 0.3237



87.9257, 0.2911, 0.3226



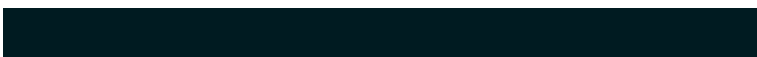
44.6627, 0.2943, 0.3087



11.1211, 0.2984, 0.3249



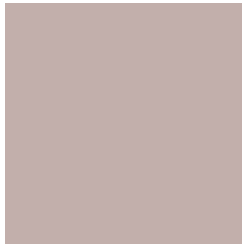
19.2660, 0.2092, 0.2732



0.9126, 0.2130, 0.2869

Previews

White Background



This preview shows how the Yxy color 45.0696, 0.3332, 0.3342 looks on a white background.

Color Contrast Check

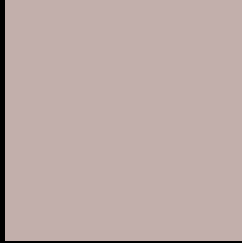
Large Text (above 18pt) WCAG AA × Fail

Any Text WCAG AA × Fail

Large Text (above 18pt) WCAG AAA × Fail

Any Text WCAG AAA × Fail

Black Background



This preview shows how the Yxy color 45.0696, 0.3332, 0.3342 looks on a black background.

Color Contrast Check

Large Text (above 18pt) WCAG AA ✓ Pass

Any Text WCAG AA ✓ Pass

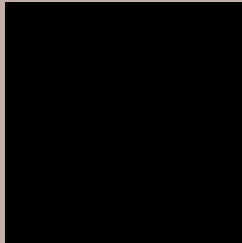
Large Text (above 18pt) WCAG AAA ✓ Pass

Any Text WCAG AAA ✓ Pass

If you want to check with other color combinations, try the [Color Contrast Checker](#).

Yxy 45.0696, 0.3332, 0.3342

Background



This preview shows how black text looks on a background with the Yxy color 45.0696, 0.3332, 0.3342.



This preview shows how white text looks on a background with the Yxy color 45.0696, 0.3332, 0.3342.

Color Blindness Simulation

Color vision deficiency is a very complex topic, and I could not describe the different causes any better than Wikipedia does, so if you want to learn more, you should check out their [article about color blindness](#).

Dichromacy



Original Color

45.0696, 0.3332, 0.3342

Protanopia

45.0483, 0.3221, 0.3356

Deuteranopia

44.9695, 0.3381, 0.3316



Tritanopia

45.1681, 0.3224, 0.3127

Trichromacy



Original Color

45.0696, 0.3332, 0.3342

Protanomaly

45.1142, 0.3266, 0.3356

Deuteranomaly

45.0827, 0.3361, 0.3329

Tritanomaly

45.2104, 0.3256, 0.3202

Monochromacy



Original Color

45.0696, 0.3332, 0.3342

Achromatopsia

45.6411, 0.3127, 0.3290

Achromatomaly

45.3294, 0.3196, 0.3303

CSS Examples

Text

The CSS property to change the color of the text to Yxy 45.0696, 0.3332, 0.3342 is called "color". The color property can be set on classes, ids or directly on the HTML element.

This example shows how text in the color `rgb(194, 175, 171)` looks like.

```
.text, #text, p{  
    color:rgb(194, 175, 171)  
}
```

If you want to add a text shadow in that color use the text-shadow property, you can generate a text shadow directly with our [CSS Text Shadow Generator](#).

Here you see how black text with a 4 pixel rgb(194, 175, 171) colored shadow looks like.

```
.shadow{ text-shadow: 4px 4px 2px rgb(194, 175, 171) }
```

Border

The CSS property to change the border of an element to Yxy 45.0696, 0.3332, 0.3342 is called "border". The border property can be set on classes, ids or directly on the HTML element.

This example shows the color as border, it can be applied via the CSS property "border" or "border-color".

```
.border, #border, table{ border:4px solid rgb(194, 175, 171) }
```

If only the border color should be changed use the property `border-color`.

```
.border{ border-color:rgb(194, 175, 171) }
```

If you want to add a box shadow in that color use:

Here you see how a box with a 4 pixel `rgb(194, 175, 171)` colored shadow looks like.

```
.boxshadow{ -moz-box-shadow:4px 4px 4px  
4px rgb(194, 175, 171); -webkit-box-  
shadow:4px 4px 4px 4px rgb(194, 175, 171);  
box-shadow:4px 4px 4px 4px rgb(194, 175,  
171) }
```


Background

The CSS property to change the background color of an element to Yxy 45.0696, 0.3332, 0.3342 is called "background". The background property can be set on classes, ids or directly on the HTML element.

```
.background, #background, body{  
background: rgb(194, 175, 171) }
```

If only the background color should be changed can be used:

```
.background{ background-color: rgb(194,  
175, 171) }
```

This example shows the color as background, it is applied via the CSS property "background".

To optimize and compress your CSS code, you can use our [online CSS compressor and optimizer](#) based on csstidy. If you want to create a linear or radial gradient as background or border, check our [CSS Gradient Generator](#).

Hey! You found this booklet interesting? Support Converting Colors with the new Membership Option!

The pro membership hides all ads, plus gives you double the colors in the color bucket, and more awesome pro features!

[Learn more, Memberships starting at \\$2.50/m!](#)

**Follow me
on Twitter!**

@ConvertingColor