

Converting Colors

$Y_{xy}(45.0030, 0.3386, 0.3230)$

Have a look what the booklet for
Yxy(45.0030, 0.3386, 0.3230)
contains.

Yxy(45.0978, 0.3386, 0.3229)	3
Conversions	4
Details	6
Harmonies	12
Previews	24
Color Blindness Simulation	27
CSS Examples	30

Color

Yxy(45.0978, 0.3386, 0.3229)

Conversions

Conversions Part 1

Format	Color
Hex	CCABBO
RGB	204, 171, 176
RGB Percent	80%, 67%, 69%
CMY	0.2002, 0.3293, 0.3099
CMYK	0.00, 0.16, 0.14, 0.20
HSL	351°, 24%, 74%
HSV	351°, 16%, 80%
XYZ	47.2905, 45.0978, 47.2766
YIQ	181.4370, 18.0630, 8.5510

Conversions

Conversions Part 2

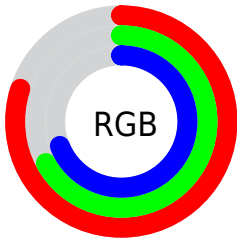
Format	Color
RYB	204, 171, 176
Decimal	13413296
CIELab	72.96, 12.77, 1.93
CIELCh	73, 12.913, 8.580
Yxy	45.0978, 0.3386, 0.3229
Android (android.graphics.Color)	4291603376 (0xFFCCABB0)
YUV	181.4370, -2.6804, 19.7878
Hunter-Lab	67.1549, 8.1788, 5.2687

Details

The Yxy color **45.0978, 0.3386, 0.3229** is a light color, and the websafe version is hex **CC9999**. A complement of this color would be **55.9487, 0.2917, 0.3352**, and the grayscale version is **46.4633, 0.3127, 0.3290**.

A 20% lighter version of the original color is **81.4789, 0.3291, 0.3231**, and **21.0384, 0.3449, 0.3207** is the 20% darker color. If you saturate the color by 10%, you get **37.3362, 0.3598, 0.3189**, and if you desaturate by 10%, it is **54.1399, 0.3215, 0.3268**.

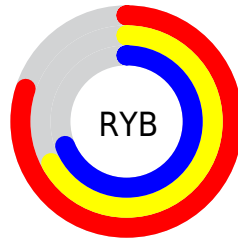
Distribution



Red (80%)

Green (67%)

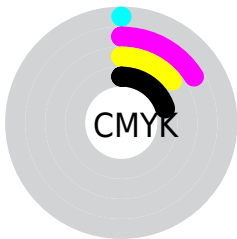
Blue (69%)



Red (80%)

Yellow (67%)

Blue (69%)

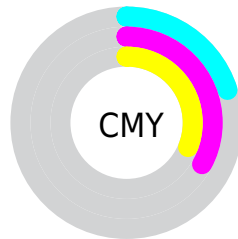


Cyan (0%)

Magenta (16%)

Yellow (14%)

Black (20%)



Cyan (20%)

Magenta (33%)

Yellow (31%)

Brightness & Saturation Gradients


These gradients show how the Yxy color 45.0978, 0.3386, 0.3229 changes by changing the brightness by 10 percent. The first figure shows a shift by +10% for each color and the second figure -10%.

Similar to the brightness gradients but the following saturation gradients show a change of the Yxy color 45.0978, 0.3386, 0.3229 by changing the saturation by 10% instead.


 45.0978, 0.3386,
0.3229

 45.0978, 0.3386,
0.3229

367.1695, 0.3255,
0.3260

 31.5345, 0.3419,
0.3221


 82.8672, 0.3338,
0.3241

 21.0062, 0.3462,
0.3210


107.8420, 0.3320,
0.3245

 13.1285, 0.3519,
0.3196

137.3894, 0.3305,
0.3249

 7.5171, 0.3599,
0.3175

171.8938, 0.3293,
0.3252

 3.7875, 0.3722,
0.3143

211.7396, 0.3281,
0.3254

 1.5554, 0.3928,
0.3086

257.3113, 0.3272,

 0.3273, 0.5315,

0.3257

0.2793

308.9931, 0.3263,
0.3259

0.0000, 0.0000,
0.0000

45.0978, 0.3386,
0.3229

45.0978, 0.3386,
0.3229

37.3362, 0.3598,
0.3189

54.1399, 0.3215,
0.3268

30.7913, 0.3858,
0.3148

64.5103, 0.3078,
0.3303

25.4033, 0.4174,
0.3111

76.2620, 0.2966,
0.3336

21.1044, 0.4546,
0.3081

89.4430, 0.2876,
0.3366

17.8203, 0.4963,
0.3067

91.5711, 0.2827,
0.3289

■ 15.4669, 0.5396,
0.3075

■ 13.9468, 0.5797,
0.3110

■ 13.1377, 0.6109,
0.3171

■ 12.9285, 0.6204,
0.3192

Harmonies

Analogous

The Analogous color harmony consists of three colors that are next to each other on the color wheel.



45.0978, 0.3223, 0.3091



45.0978, 0.3386, 0.3229



45.0978, 0.3479, 0.3386

Triad

The Triadic color harmony groups three colors that are evenly spaced from another and form a triangle on the color wheel.



45.0978, 0.3386, 0.3229



45.0978, 0.3209, 0.3598



45.0978, 0.2791, 0.3048

Complementary

The Complementary color scheme is a pair of colors which are on the opposite of each other on the color wheel.



45.0978, 0.3386, 0.3229



55.9487, 0.2917, 0.3352

Split Complementary

Split-complementary colors differ from the complementary color scheme. The scheme consists of three colors, the original color and two neighbors of the complement color.



45.0978, 0.2788, 0.3178



45.0978, 0.3386, 0.3229



45.0978, 0.3025, 0.3502

Square

The Square scheme is like the rectangle color scheme, but the four colors are evenly spaced on the color wheel.



45.0978, 0.3386, 0.3229



45.0978, 0.3374, 0.3603



45.0978, 0.2873, 0.3346



45.0978, 0.2881, 0.2986

Rectangle

The Rectangle color scheme consists of four colors that form a rectangle on the color wheel.



45.0978, 0.3386, 0.3229



45.0978, 0.3487, 0.3482



45.0978, 0.2873, 0.3346



45.0978, 0.2780, 0.3084

Sweetspot

The Sweet Spot groups the original color and five complimentary colors.



45.0998, 0.3386, 0.3229



91.4551, 0.3199, 0.3272



45.5617, 0.3098, 0.2888



19.3279, 0.3210, 0.3269



0.0000, 0.0000, 0.0000



21.4041, 0.3127, 0.3290

Same Dimension

The Same Dimension uses a secret algorithm to generate beautiful new colors.



45.0998, 0.3386, 0.3229



70.5150, 0.3447, 0.3217



49.2287, 0.3409, 0.3427



11.2407, 0.3267, 0.3255



8.1500, 0.6178, 0.3177



0.4295, 0.5701, 0.2914

Inverse Universe

The Inverse Universe completely reimagines the original color for something new.



45.0998, 0.3386, 0.3229



70.5150, 0.3447, 0.3217



51.1485, 0.2879, 0.3149



11.2407, 0.3267, 0.3255



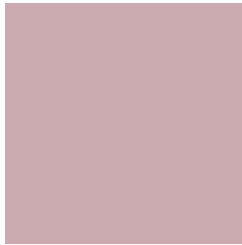
8.1500, 0.6178, 0.3177



0.4295, 0.5701, 0.2914

Previews

White Background



This preview shows how the Yxy color 45.0978, 0.3386, 0.3229 looks on a white background.

Color Contrast Check

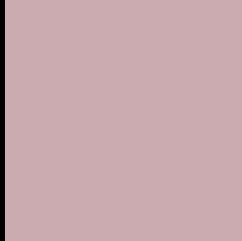
Large Text (above 18pt) WCAG AA × Fail

Any Text WCAG AA × Fail

Large Text (above 18pt) WCAG AAA × Fail

Any Text WCAG AAA × Fail

Black Background



This preview shows how the Yxy color 45.0978, 0.3386, 0.3229 looks on a black background.

Color Contrast Check

Large Text (above 18pt) WCAG AA ✓ Pass

Any Text WCAG AA ✓ Pass

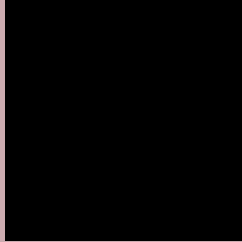
Large Text (above 18pt) WCAG AAA ✓ Pass

Any Text WCAG AAA ✓ Pass

If you want to check with other color combinations, try the [Color Contrast Checker](#).

Yxy 45.0978, 0.3386, 0.3229

Background



This preview shows how black text looks on a background with the Yxy color 45.0978, 0.3386, 0.3229.



This preview shows how white text looks on a background with the Yxy color 45.0978, 0.3386, 0.3229.

Color Blindness Simulation

Color vision deficiency is a very complex topic, and I could not describe the different causes any better than Wikipedia does, so if you want to learn more, you should check out their [article about color blindness](#).

Dichromacy



Original Color

45.0978, 0.3386, 0.3229

Protanopia

45.0812, 0.3146, 0.3264

Deuteranopia

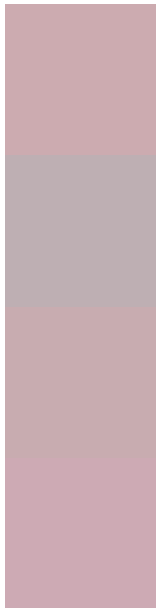
45.0275, 0.3328, 0.3253



Tritanopia

45.1475, 0.3335, 0.3130

Trichromacy



Original Color

45.0978, 0.3386, 0.3229

Protanomaly

44.8618, 0.3227, 0.3239

Deuteranomaly

44.9190, 0.3348, 0.3240

Tritanomaly

45.0239, 0.3362, 0.3167

Monochromacy



Original Color

45.0978, 0.3386, 0.3229

Achromatopsia

46.2077, 0.3127, 0.3290

Achromatomaly

45.5178, 0.3216, 0.3264

CSS Examples

Text

The CSS property to change the color of the text to Yxy 45.0978, 0.3386, 0.3229 is called "color". The color property can be set on classes, ids or directly on the HTML element.

This example shows how text in the color `rgb(204, 171, 176)` looks like.

```
.text, #text, p{  
    color:rgb(204, 171, 176)  
}
```

If you want to add a text shadow in that color use the text-shadow property, you can generate a text shadow directly with our [CSS Text Shadow Generator](#).

Here you see how black text with a 4 pixel rgb(204, 171, 176) colored shadow looks like.

```
.shadow{ text-shadow: 4px 4px 2px rgb(204, 171, 176) }
```

Border

The CSS property to change the border of an element to Yxy 45.0978, 0.3386, 0.3229 is called "border". The border property can be set on classes, ids or directly on the HTML element.

This example shows the color as border, it can be applied via the CSS property "border" or "border-color".

```
.border, #border, table{ border:4px solid rgb(204, 171, 176) }
```

If only the border color should be changed use the property `border-color`.

```
.border{ border-color:rgb(204, 171, 176) }
```

If you want to add a box shadow in that color use:

Here you see how a box with a 4 pixel `rgb(204, 171, 176)` colored shadow looks like.

```
.boxshadow{ -moz-box-shadow:4px 4px 4px  
4px rgb(204, 171, 176); -webkit-box-  
shadow:4px 4px 4px 4px rgb(204, 171, 176);  
box-shadow:4px 4px 4px 4px rgb(204, 171,  
176) }
```


Background

The CSS property to change the background color of an element to Yxy 45.0978, 0.3386, 0.3229 is called "background". The background property can be set on classes, ids or directly on the HTML element.

```
.background, #background, body{  
background: rgb(204, 171, 176) }
```

If only the background color should be changed can be used:

```
.background{ background-color: rgb(204,  
171, 176) }
```

This example shows the color as background, it is applied via the CSS property "background".

To optimize and compress your CSS code, you can use our [online CSS compressor and optimizer](#) based on csstidy. If you want to create a linear or radial gradient as background or border, check our [CSS Gradient Generator](#).

Hey! You found this booklet interesting? Support Converting Colors with the new Membership Option!

The pro membership hides all ads, plus gives you double the colors in the color bucket, and more awesome pro features!

[Learn more, Memberships starting at \\$2.50/m!](#)

**Follow me
on Twitter!**

@ConvertingColor