

# Converting Colors

$Yxy(45.0375, 0.3423, 0.3513)$

Have a look what the booklet for  
Yxy(45.0375, 0.3423, 0.3513)  
contains.

<b>Yxy(44.8913, 0.3425, 0.3512)</b> .....	3
<b>Conversions</b> .....	4
<b>Details</b> .....	6
<b>Harmonies</b> .....	12
<b>Previews</b> .....	24
<b>Color Blindness Simulation</b> .....	27
<b>CSS Examples</b> .....	30

# Color

**Yxy(44.8913, 0.3425, 0.3512)**

# Conversions

## Conversions Part 1

<b>Format</b>	<b>Color</b>
Hex	C1B09F
RGB	193, 176, 159
RGB Percent	76%, 69%, 62%
CMY	0.2430, 0.3098, 0.3765
CMYK	0.00, 0.09, 0.18, 0.24
HSL	30°, 22%, 69%
HSV	30°, 18%, 76%
XYZ	43.7792, 44.8913, 39.1521
YIQ	179.1450, 15.5890, -1.6830

# Conversions

## Conversions Part 2

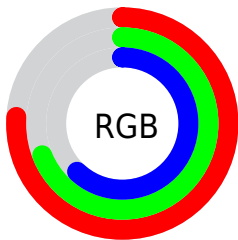
Format	Color
<a href="#">RYB</a>	<a href="#">193, 193, 159</a>
Decimal	<a href="#">12693663</a>
CIELab	<a href="#">72.82, 3.30, 10.92</a>
CIELCh	<a href="#">73, 11.405, 73.203</a>
Yxy	<a href="#">44.8913, 0.3425, 0.3512</a>
Android (android.graphics.Color)	<a href="#">4290883743</a> ( <a href="#">0xFFC1B09F</a> )
YUV	<a href="#">179.1450, -9.9315, 12.1508</a>
Hunter-Lab	<a href="#">67.0010, -0.6176, 12.2545</a>

# Details

The Yxy color **44.8913, 0.3425, 0.3512** is a light color, and the websafe version is hex **CCCCCC**. A complement of this color would be **42.2773, 0.2853, 0.3057**, and the grayscale version is **45.2103, 0.3127, 0.3290**.

A 20% lighter version of the original color is **82.8923, 0.3369, 0.3473**, and **20.9870, 0.3503, 0.3575** is the 20% darker color. If you saturate the color by 10%, you get **40.6218, 0.3626, 0.3646**, and if you desaturate by 10%, it is **49.5388, 0.3248, 0.3383**.

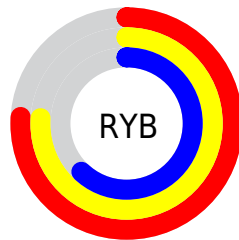
# Distribution



Red (76%)

Green (69%)

Blue (62%)



Red (76%)

Yellow (76%)

Blue (62%)

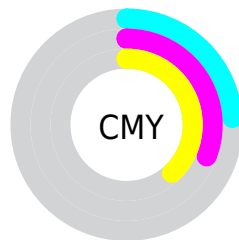


Cyan (0%)

Magenta (9%)

Yellow (18%)

Black (24%)



Cyan (24%)

Magenta (31%)


Yellow (38%)

# Brightness & Saturation Gradients

These gradients show how the Yxy color 44.8913, 0.3425, 0.3512 changes by changing the brightness by 10 percent. The first figure shows a shift by +10% for each color and the second figure -10%.


Similar to the brightness gradients but the following saturation gradients show a change of the Yxy color 44.8913, 0.3425, 0.3512 by changing the saturation by 10% instead.





 44.8913, 0.3425,  
0.3512

 44.8913, 0.3425,  
0.3512


366.3331, 0.3275,  
0.3401

 31.3718, 0.3463,  
0.3539


 82.5573, 0.3370,  
0.3472

 20.8821, 0.3512,  
0.3575


 107.4725, 0.3349,  
0.3457

 13.0379, 0.3578,  
0.3621


136.9552, 0.3332,  
0.3444

 7.4546, 0.3670,  
0.3685

171.3897, 0.3317,  
0.3433

 3.7480, 0.3809,  
0.3779

211.1603, 0.3304,  
0.3424

 1.5336, 0.4051,  
0.3940

256.6515, 0.3293,

 0.3122, 0.5471,

0.3415

0.4529

308.2476, 0.3283,  
0.3408

0.0000, 0.0000,  
0.0000

44.8913, 0.3425,  
0.3512

44.8913, 0.3425,  
0.3512

40.6218, 0.3626,  
0.3646

49.5388, 0.3248,  
0.3383

36.7139, 0.3852,  
0.3780

54.5683, 0.3092,  
0.3262

33.1587, 0.4100,  
0.3908

59.9912, 0.2957,  
0.3149

29.9444, 0.4366,  
0.4021

65.8166, 0.2839,  
0.3045

27.0587, 0.4641,  
0.4108

72.0212, 0.2739,  
0.2954

■ 24.4880, 0.4909,  
0.4156

■ 77.3683, 0.2748,  
0.3062

■ 22.2172, 0.5155,  
0.4155

■ 83.0151, 0.2757,  
0.3167

■ 20.2272, 0.5364,  
0.4100

■ 88.9661, 0.2766,  
0.3270

■ 19.7917, 0.5412,  
0.4085

■ 90.0807, 0.2768,  
0.3289

# Harmonies

## Analogous

The Analogous color harmony consists of three colors that are next to each other on the color wheel.



44.8913, 0.3443, 0.3396



44.8913, 0.3425, 0.3512



44.8913, 0.3326, 0.3571

# Triad

The Triadic color harmony groups three colors that are evenly spaced from another and form a triangle on the color wheel.



44.8913, 0.3425, 0.3512



44.8913, 0.2886, 0.3316



44.8913, 0.3073, 0.3043

# Complementary

The Complementary color scheme is a pair of colors which are on the opposite of each other on the color wheel.



44.8913, 0.3425, 0.3512



42.2773, 0.2853, 0.3057

# Split Complementary

Split-complementary colors differ from the complementary color scheme. The scheme consists of three colors, the original color and two neighbors of the complement color.



44.8913, 0.2928, 0.3018



44.8913, 0.3425, 0.3512



44.8913, 0.2822, 0.3171

# Square

The Square scheme is like the rectangle color scheme, but the four colors are evenly spaced on the color wheel.



44.8913, 0.3425, 0.3512



44.8913, 0.3014, 0.3458



44.8913, 0.2837, 0.3063



44.8913, 0.3237, 0.3130



# Rectangle

The Rectangle color scheme consists of four colors that form a rectangle on the color wheel.



44.8913, 0.3425, 0.3512



44.8913, 0.3228, 0.3568



44.8913, 0.2837, 0.3063



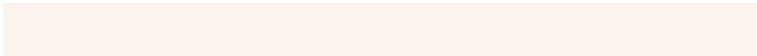
44.8913, 0.3021, 0.3027

# Sweetspot

The Sweet Spot groups the original color and five complimentary colors.



44.8933, 0.3425, 0.3512



90.9343, 0.3206, 0.3352



39.2900, 0.3296, 0.3062



19.3746, 0.3217, 0.3360



97.7402, 0.3127, 0.3290



20.4902, 0.3127, 0.3290

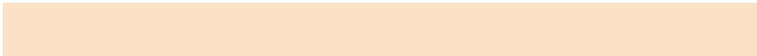


# Same Dimension

The Same Dimension uses a secret algorithm to generate beautiful new colors.



44.8933, 0.3425, 0.3512



77.4783, 0.3497, 0.3561



51.7439, 0.3390, 0.3716



10.8909, 0.3277, 0.3405



13.3201, 0.5392, 0.4100



0.7134, 0.5056, 0.4368

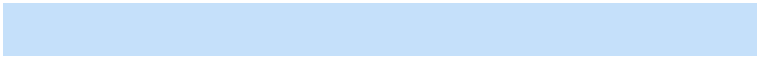


# Inverse Universe

The Inverse Universe completely reimagines the original color for something new.



42.2773, 0.2853, 0.3057



71.9589, 0.2794, 0.3003



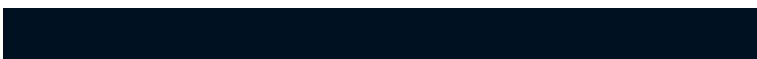
36.2085, 0.2842, 0.2825



10.5618, 0.2984, 0.3172



8.3516, 0.1777, 0.1596

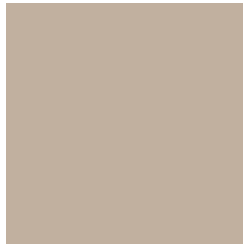


0.4987, 0.1890, 0.2002



# Previews

## White Background



This preview shows how the Yxy color 44.8913, 0.3425, 0.3512 looks on a white background.

## Color Contrast Check

Large Text (above 18pt) WCAG AA × Fail

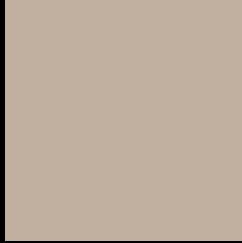
Any Text WCAG AA × Fail

Large Text (above 18pt) WCAG AAA × Fail

Any Text WCAG AAA × Fail



# Black Background



This preview shows how the Yxy color 44.8913, 0.3425, 0.3512 looks on a black background.

## Color Contrast Check

Large Text (above 18pt) WCAG AA ✓ Pass

Any Text WCAG AA ✓ Pass

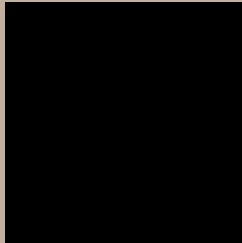
Large Text (above 18pt) WCAG AAA ✓ Pass

Any Text WCAG AAA ✓ Pass

If you want to check with other color combinations, try the [Color Contrast Checker](#).

**Yxy 44.8913, 0.3425, 0.3512**

## **Background**



This preview shows how black text looks on a background with the Yxy color 44.8913, 0.3425, 0.3512.



This preview shows how white text looks on a background with the Yxy color 44.8913, 0.3425, 0.3512.

# Color Blindness Simulation

Color vision deficiency is a very complex topic, and I could not describe the different causes any better than Wikipedia does, so if you want to learn more, you should check out their [article about color blindness](#).

## Dichromacy



### Original Color

44.8913, 0.3425, 0.3512

### Protanopia

44.8180, 0.3348, 0.3529

### Deuteranopia

44.7396, 0.3519, 0.3443



## Tritanopia

44.7860, 0.3225, 0.3114

# Trichromacy



## Original Color

44.8913, 0.3425, 0.3512

## Protanomaly

44.8012, 0.3377, 0.3514

## Deuteranomaly

44.5673, 0.3479, 0.3457

## Tritanomaly

44.6238, 0.3300, 0.3252

# Monochromacy



## Original Color

44.8913, 0.3425, 0.3512

## Achromatopsia

45.0786, 0.3127, 0.3290

## Achromatomaly

45.0097, 0.3229, 0.3369

# CSS Examples

## Text

The CSS property to change the color of the text to Yxy 44.8913, 0.3425, 0.3512 is called "color". The color property can be set on classes, ids or directly on the HTML element.

This example shows how text in the color `rgb(193, 176, 159)` looks like.

```
.text, #text, p{  
    color:rgb(193, 176, 159)  
}
```

If you want to add a text shadow in that color use the text-shadow property, you can generate a text shadow directly with our [CSS Text Shadow Generator](#).

Here you see how black text with a 4 pixel rgb(193, 176, 159) colored shadow looks like.

```
.shadow{ text-shadow: 4px 4px 2px rgb(193, 176, 159) }
```

## Border

The CSS property to change the border of an element to Yxy 44.8913, 0.3425, 0.3512 is called "border". The border property can be set on classes, ids or directly on the HTML element.

This example shows the color as border, it can be applied via the CSS property "border" or "border-color".

```
.border, #border, table{ border:4px solid rgb(193, 176, 159) }
```

If only the border color should be changed use the property `border-color`.

```
.border{ border-color:rgb(193, 176, 159) }
```

If you want to add a box shadow in that color use:

Here you see how a box with a 4 pixel `rgb(193, 176, 159)` colored shadow looks like.

```
.boxshadow{ -moz-box-shadow:4px 4px 4px  
4px rgb(193, 176, 159); -webkit-box-  
shadow:4px 4px 4px 4px rgb(193, 176, 159);  
box-shadow:4px 4px 4px 4px rgb(193, 176,  
159) }
```



# Background

The CSS property to change the background color of an element to Yxy 44.8913, 0.3425, 0.3512 is called "background". The background property can be set on classes, ids or directly on the HTML element.

```
.background, #background, body{  
background: rgb(193, 176, 159) }
```

If only the background color should be changed can be used:

```
.background{ background-color: rgb(193,  
176, 159) }
```

This example shows the color as background, it is applied via the CSS property "background".

To optimize and compress your CSS code, you can use our [online CSS compressor and optimizer](#) based on csstidy. If you want to create a linear or radial gradient as background or border, check our [CSS Gradient Generator](#).

Hey! You found this booklet interesting? Support Converting Colors with the new Membership Option!

The pro membership hides all ads, plus gives you double the colors in the color bucket, and more awesome pro features!

**[Learn more, Memberships starting at \\$2.50/m!](#)**

**Follow me  
on Twitter!**

@ConvertingColor