

Converting Colors

$Y_{xy}(45.2292, 0.3398, 0.3192)$

Have a look what the booklet for
Yxy(45.2292, 0.3398, 0.3192)
contains.

Yxy(45.2292, 0.3398, 0.3192)	3
Conversions	4
Details	6
Harmonies	12
Previews	24
Color Blindness Simulation	27
CSS Examples	30

Color

Yxy(45.2292, 0.3398, 0.3192)

Conversions

Conversions Part 1

Format	Color
Hex	CFAAB2
RGB	207, 170, 178
RGB Percent	81%, 67%, 70%
CMY	0.1881, 0.3334, 0.3019
CMYK	0.00, 0.18, 0.14, 0.19
HSL	347°, 28%, 74%
HSV	347°, 18%, 81%
XYZ	48.1481, 45.2292, 48.3182
YIQ	181.9750, 19.4840, 10.3320

Conversions

Conversions Part 2

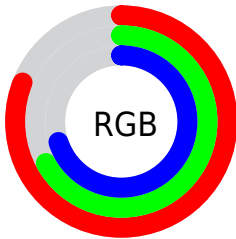
Format	Color
R_{YB}	207, 170, 178
Decimal	13609650
CIE _{Lab}	73.04, 14.78, 0.97
CIE _{LCh}	73, 14.809, 3.760
Yxy	45.2292, 0.3398, 0.3192
Android (android.graphics.Color)	4291799730 (0xFFCFAAB2)
YUV	181.9750, -1.9597, 21.9469
Hunter-Lab	67.2527, 10.1012, 4.4795

Details

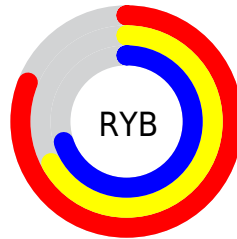
The Yxy color **45.2292, 0.3398, 0.3192** is a light color, and the websafe version is hex **CC9999**. A complement of this color would be **57.3057, 0.2911, 0.3391**, and the grayscale version is **46.7700, 0.3127, 0.3290**.

A 20% lighter version of the original color is **81.0509, 0.3279, 0.3201**, and **21.1129, 0.3478, 0.3175** is the 20% darker color. If you saturate the color by 10%, you get **37.4577, 0.3600, 0.3133**, and if you desaturate by 10%, it is **54.3040, 0.3234, 0.3248**.

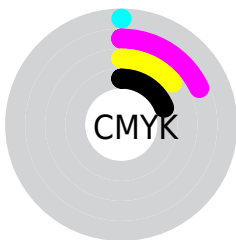
Distribution



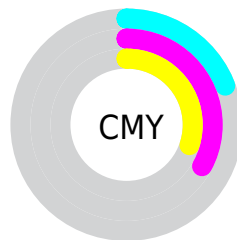
- Red (81%)
- Green (67%)
- Blue (70%)



- Red (81%)
- Yellow (67%)
- Blue (70%)



- Cyan (0%)
- Magenta (18%)
- Yellow (14%)
- Black (19%)




- Cyan (19%)
- Magenta (33%)
- Yellow (30%)

Brightness & Saturation Gradients


These gradients show how the Yxy color 45.2292, 0.3398, 0.3192 changes by changing the brightness by 10 percent. The first figure shows a shift by +10% for each color and the second figure -10%.


Similar to the brightness gradients but the following saturation gradients show a change of the Yxy color 45.2292, 0.3398, 0.3192 by changing the saturation by 10% instead.


 45.2292, 0.3398,
0.3192

 45.2292, 0.3398,
0.3192


367.7010, 0.3262,
0.3242

 31.6380, 0.3432,
0.3179


 83.0642, 0.3348,
0.3210

 21.0851, 0.3477,
0.3163


108.0769, 0.3330,
0.3217

 13.1863, 0.3536,
0.3141


137.6654, 0.3314,
0.3223

 7.5569, 0.3620,
0.3110

172.2143, 0.3300,
0.3228

 3.8128, 0.3746,
0.3062

212.1079, 0.3289,
0.3232

 1.5694, 0.3959,
0.2981

257.7307, 0.3279,

 0.3368, 0.5172,

0.3236

0.2558

309.4669, 0.3270,
0.3239

0.0000, 0.0000,
0.0000

45.2292, 0.3398,
0.3192

45.2292, 0.3398,
0.3192

37.4577, 0.3600,
0.3133

54.3040, 0.3234,
0.3248

30.9237, 0.3847,
0.3075

64.7318, 0.3101,
0.3301

25.5647, 0.4145,
0.3021

76.5673, 0.2994,
0.3349

21.3105, 0.4494,
0.2979

89.8602, 0.2906,
0.3393

18.0834, 0.4884,
0.2957

92.0086, 0.2844,
0.3289

■ 15.7951, 0.5291,
0.2965

■ 14.3429, 0.5674,
0.3011

■ 13.5792, 0.5988,
0.3089

■ 13.4567, 0.6046,
0.3104

Harmonies

Analogous

The Analogous color harmony consists of three colors that are next to each other on the color wheel.



45.2292, 0.3203, 0.3042



45.2292, 0.3398, 0.3192



45.2292, 0.3521, 0.3369

Triad

The Triadic color harmony groups three colors that are evenly spaced from another and form a triangle on the color wheel.



45.2292, 0.3398, 0.3192



45.2292, 0.3253, 0.3652



45.2292, 0.2736, 0.3031

Complementary

The Complementary color scheme is a pair of colors which are on the opposite of each other on the color wheel.



45.2292, 0.3398, 0.3192



57.3057, 0.2911, 0.3391

Split Complementary

Split-complementary colors differ from the complementary color scheme. The scheme consists of three colors, the original color and two neighbors of the complement color.



45.2292, 0.2749, 0.3189



45.2292, 0.3398, 0.3192



45.2292, 0.3043, 0.3558

Square

The Square scheme is like the rectangle color scheme, but the four colors are evenly spaced on the color wheel.



45.2292, 0.3398, 0.3192



45.2292, 0.3434, 0.3640



45.2292, 0.2860, 0.3385



45.2292, 0.2823, 0.2948

Rectangle

The Rectangle color scheme consists of four colors that form a rectangle on the color wheel.



45.2292, 0.3398, 0.3192



45.2292, 0.3542, 0.3483



45.2292, 0.2860, 0.3385



45.2292, 0.2729, 0.3077

Sweetspot

The Sweet Spot groups the original color and five complimentary colors.



45.2312, 0.3398, 0.3192



91.5064, 0.3194, 0.3263



45.3959, 0.3078, 0.2841



19.3403, 0.3204, 0.3260



0.0000, 0.0000, 0.0000



21.4041, 0.3127, 0.3290

Same Dimension

The Same Dimension uses a secret algorithm to generate beautiful new colors.



45.2312, 0.3398, 0.3192



68.0498, 0.3461, 0.3172



49.0100, 0.3448, 0.3420



11.8495, 0.3257, 0.3240



8.4879, 0.6014, 0.3087



0.4867, 0.5491, 0.2799

Inverse Universe

The Inverse Universe completely reimagines the original color for something new.



45.2312, 0.3398, 0.3192



68.0498, 0.3461, 0.3172



52.7716, 0.2853, 0.3156



11.8495, 0.3257, 0.3240



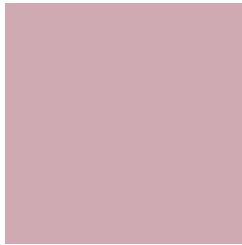
8.4879, 0.6014, 0.3087



0.4867, 0.5491, 0.2799

Previews

White Background



This preview shows how the Yxy color 45.2292, 0.3398, 0.3192 looks on a white background.

Color Contrast Check

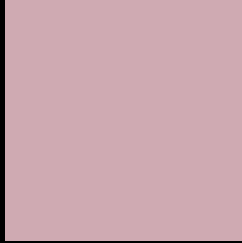
Large Text (above 18pt) WCAG AA × Fail

Any Text WCAG AA × Fail

Large Text (above 18pt) WCAG AAA × Fail

Any Text WCAG AAA × Fail

Black Background



This preview shows how the Yxy color 45.2292, 0.3398, 0.3192 looks on a black background.

Color Contrast Check

Large Text (above 18pt) WCAG AA ✓ Pass

Any Text WCAG AA ✓ Pass

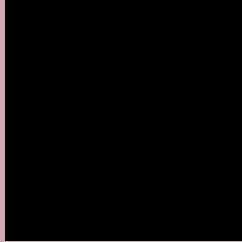
Large Text (above 18pt) WCAG AAA ✓ Pass

Any Text WCAG AAA ✓ Pass

If you want to check with other color combinations, try the [Color Contrast Checker](#).

Yxy 45.2292, 0.3398, 0.3192

Background



This preview shows how black text looks on a background with the Yxy color 45.2292, 0.3398, 0.3192.



This preview shows how white text looks on a background with the Yxy color 45.2292, 0.3398, 0.3192.

Color Blindness Simulation

Color vision deficiency is a very complex topic, and I could not describe the different causes any better than Wikipedia does, so if you want to learn more, you should check out their [article about color blindness](#).

Dichromacy



Original Color

45.2292, 0.3398, 0.3192

Protanopia

45.6042, 0.3121, 0.3238

Deuteranopia

45.4522, 0.3318, 0.3253



Tritanopia

45.1632, 0.3373, 0.3132

Trichromacy



Original Color

45.2292, 0.3398, 0.3192

Protanomaly

45.4632, 0.3218, 0.3226

Deuteranomaly

45.4790, 0.3347, 0.3241

Tritanomaly

45.1220, 0.3382, 0.3144

Monochromacy



Original Color

45.2292, 0.3398, 0.3192

Achromatopsia

46.7784, 0.3127, 0.3290

Achromatomaly

46.2534, 0.3216, 0.3252

CSS Examples

Text

The CSS property to change the color of the text to Yxy 45.2292, 0.3398, 0.3192 is called "color". The color property can be set on classes, ids or directly on the HTML element.

This example shows how text in the color `rgb(207, 170, 178)` looks like.

```
.text, #text, p{  
    color:rgb(207, 170, 178)  
}
```

If you want to add a text shadow in that color use the text-shadow property, you can generate a text shadow directly with our [CSS Text Shadow Generator](#).

Here you see how black text with a 4 pixel rgb(207, 170, 178) colored shadow looks like.

```
.shadow{ text-shadow: 4px 4px 2px rgb(207, 170, 178) }
```

Border

The CSS property to change the border of an element to Yxy 45.2292, 0.3398, 0.3192 is called "border". The border property can be set on classes, ids or directly on the HTML element.

This example shows the color as border, it can be applied via the CSS property "border" or "border-color".

```
.border, #border, table{ border:4px solid rgb(207, 170, 178) }
```

If only the border color should be changed use the property `border-color`.

```
.border{ border-color:rgb(207, 170, 178) }
```

If you want to add a box shadow in that color use:

Here you see how a box with a 4 pixel `rgb(207, 170, 178)` colored shadow looks like.

```
.boxshadow{ -moz-box-shadow:4px 4px 4px  
4px rgb(207, 170, 178); -webkit-box-  
shadow:4px 4px 4px 4px rgb(207, 170, 178);  
box-shadow:4px 4px 4px 4px rgb(207, 170,  
178) }
```


Background

The CSS property to change the background color of an element to Yxy 45.2292, 0.3398, 0.3192 is called "background". The background property can be set on classes, ids or directly on the HTML element.

```
.background, #background, body{  
background: rgb(207, 170, 178) }
```

If only the background color should be changed can be used:

```
.background{ background-color: rgb(207,  
170, 178) }
```

This example shows the color as background, it is applied via the CSS property "background".

To optimize and compress your CSS code, you can use our [online CSS compressor and optimizer](#) based on csstidy. If you want to create a linear or radial gradient as background or border, check our [CSS Gradient Generator](#).

Hey! You found this booklet interesting? Support Converting Colors with the new Membership Option!

The pro membership hides all ads, plus gives you double the colors in the color bucket, and more awesome pro features!

[Learn more, Memberships starting at \\$2.50/m!](#)

**Follow me
on Twitter!**

@ConvertingColor