

Converting Colors

$Y_{xy}(45.2347, 0.4548, 0.3700)$

Have a look what the booklet for
Yxy(45.2347, 0.4548, 0.3700)
contains.

Yxy(45.2347, 0.4548, 0.3700)	3
Conversions	4
Details	6
Harmonies	12
Previews	24
Color Blindness Simulation	27
CSS Examples	30

Color

Yxy(45.2347, 0.4548, 0.3700)

Conversions

Conversions Part 1

Format	Color
Hex	FF9971
RGB	255, 153, 113
RGB Percent	100%, 60%, 44%
CMY	0.0001, 0.3999, 0.5569
CMYK	0.00, 0.40, 0.56, 0.00
HSL	17°, 100%, 72%
HSV	17°, 56%, 100%
XYZ	55.6020, 45.2347, 21.4192
YIQ	178.9380, 73.6320, 9.1840

Conversions

Conversions Part 2

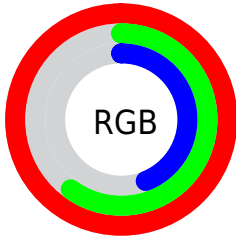
Format	Color
R_{YB}	255, 169, 113
Decimal	16750961
CIE _{Lab}	73.05, 34.35, 37.21
CIE _{LCh}	73, 50.642, 47.288
Yxy	45.2347, 0.4548, 0.3700
Android (android.graphics.Color)	4294941041 (0xFFFF9971)
YUV	178.9380, -32.5074, 66.7064
Hunter-Lab	67.2567, 29.8689, 28.1976

Details

The Yxy color **45.2347, 0.4548, 0.3700** is a light color, and the websafe version is hex **FF9966**. A complement of this color would be **59.2906, 0.2319, 0.2799**, and the grayscale version is **45.1934, 0.3127, 0.3290**.

A 20% lighter version of the original color is **69.0884, 0.3818, 0.3737**, and **21.1469, 0.4930, 0.3747** is the 20% darker color. If you saturate the color by 10%, you get **39.2000, 0.4925, 0.3742**, and if you desaturate by 10%, it is **52.3546, 0.4200, 0.3636**.

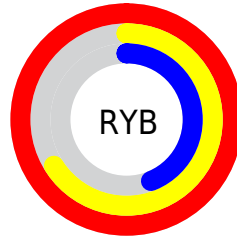
Distribution



Red (100%)

Green (60%)

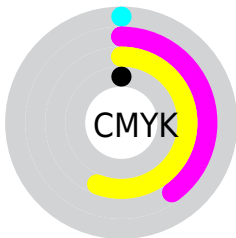
Blue (44%)



Red (100%)

Yellow (66%)

Blue (44%)

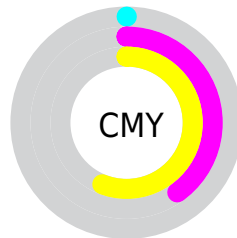


Cyan (0%)

Magenta (40%)

Yellow (56%)

Black (0%)



Cyan (0%)


Magenta (40%)

Yellow (56%)

Brightness & Saturation Gradients


These gradients show how the Yxy color 45.2347, 0.4548, 0.3700 changes by changing the brightness by 10 percent. The first figure shows a shift by +10% for each color and the second figure -10%.

Similar to the brightness gradients but the following saturation gradients show a change of the Yxy color 45.2347, 0.4548, 0.3700 by changing the saturation by 10% instead.


 45.2347, 0.4548,
0.3700

 45.2347, 0.4548,
0.3700


367.7233, 0.3836,
0.3541

 31.6423, 0.4720,
0.3723


 83.0725, 0.4292,
0.3655

 21.0885, 0.4935,
0.3741


 108.0867, 0.4195,
0.3634

 13.1887, 0.5209,
0.3749


 137.6770, 0.4112,
0.3615

 7.5586, 0.5562,
0.3725

 172.2277, 0.4041,
0.3597

 3.8138, 0.6133,
0.3696

212.1233, 0.3980,
0.3581

 1.5700, 0.6630,
0.3370

257.7482, 0.3926,

 0.3372, 0.7807,

0.3567

0.2193

309.4867, 0.3878,
0.3554

0.0000, 1.0000,
0.0000

0.0000, 0.0000,
0.0000

45.2347, 0.4548,
0.3700

45.2347, 0.4548,
0.3700

39.2000, 0.4925,
0.3742

52.3546, 0.4200,
0.3636

34.1880, 0.5307,
0.3749


60.6043, 0.3894,
0.3561


30.1398, 0.5658,
0.3713

70.0338, 0.3630,
0.3482

26.9862, 0.5939,
0.3631

80.6884, 0.3407,
0.3404

 25.8759, 0.6037,
0.3588

 92.6106, 0.3220,
0.3330

99.9935, 0.3127,
0.3290

Harmonies

Analogous

The Analogous color harmony consists of three colors that are next to each other on the color wheel.



45.2347, 0.4299, 0.3169



45.2347, 0.4548, 0.3700



45.2347, 0.4360, 0.4210

Triad

The Triadic color harmony groups three colors that are evenly spaced from another and form a triangle on the color wheel.



45.2347, 0.4548, 0.3700



45.2347, 0.2518, 0.4004



45.2347, 0.2348, 0.2201

Complementary

The Complementary color scheme is a pair of colors which are on the opposite of each other on the color wheel.



45.2347, 0.4548, 0.3700



59.2906, 0.2319, 0.2799

Split Complementary

Split-complementary colors differ from the complementary color scheme. The scheme consists of three colors, the original color and two neighbors of the complement color.



45.2347, 0.1984, 0.2281



45.2347, 0.4548, 0.3700



45.2347, 0.2063, 0.3251

Square

The Square scheme is like the rectangle color scheme, but the four colors are evenly spaced on the color wheel.



45.2347, 0.4548, 0.3700



45.2347, 0.3168, 0.4526



45.2347, 0.1885, 0.2628



45.2347, 0.2952, 0.2353

Rectangle

The Rectangle color scheme consists of four colors that form a rectangle on the color wheel.



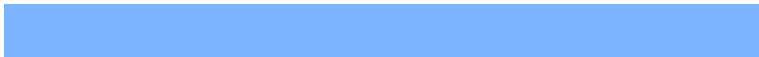
45.2347, 0.4548, 0.3700



45.2347, 0.4042, 0.4474



45.2347, 0.1885, 0.2628



45.2347, 0.2198, 0.2200

Sweetspot

The Sweet Spot groups the original color and five complimentary colors.



45.2370, 0.4548, 0.3700



79.2402, 0.3434, 0.3414



38.0762, 0.3559, 0.2271



16.4880, 0.3477, 0.3430



0.0000, 0.0000, 0.0000



21.4041, 0.3127, 0.3290

Same Dimension

The Same Dimension uses a secret algorithm to generate beautiful new colors.



45.2370, 0.4548, 0.3700



38.4953, 0.4975, 0.3745



74.6017, 0.4105, 0.4358



18.8210, 0.3287, 0.3358



13.7412, 0.6009, 0.3611



1.5135, 0.5788, 0.3786

Inverse Universe

The Inverse Universe completely reimagines the original color for something new.



59.2906, 0.2319, 0.2799



53.6490, 0.2196, 0.2679



31.3211, 0.2127, 0.1895



19.5646, 0.2980, 0.3221



21.7534, 0.1984, 0.2343



2.3035, 0.2018, 0.2464

Previews

White Background



This preview shows how the Yxy color 45.2347, 0.4548, 0.3700 looks on a white background.

Color Contrast Check

Large Text (above 18pt) WCAG AA × Fail

Any Text WCAG AA × Fail

Large Text (above 18pt) WCAG AAA × Fail

Any Text WCAG AAA × Fail

Black Background



This preview shows how the Yxy color 45.2347, 0.4548, 0.3700 looks on a black background.

Color Contrast Check

Large Text (above 18pt) WCAG AA ✓ Pass

Any Text WCAG AA ✓ Pass

Large Text (above 18pt) WCAG AAA ✓ Pass

Any Text WCAG AAA ✓ Pass

If you want to check with other color combinations, try the [Color Contrast Checker](#).

Yxy 45.2347, 0.4548, 0.3700

Background



This preview shows how black text looks on a background with the Yxy color 45.2347, 0.4548, 0.3700.



This preview shows how white text looks on a background with the Yxy color 45.2347, 0.4548, 0.3700.

Color Blindness Simulation

Color vision deficiency is a very complex topic, and I could not describe the different causes any better than Wikipedia does, so if you want to learn more, you should check out their [article about color blindness](#).

Dichromacy



Original Color

45.2347, 0.4548, 0.3700

Protanopia

45.5671, 0.3722, 0.4018

Deuteranopia

45.5146, 0.4118, 0.4037



Tritanopia

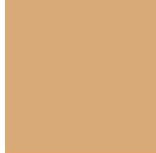
45.2581, 0.4103, 0.3188

Trichromacy



Original Color

45.2347, 0.4548, 0.3700



Protanomaly

44.7044, 0.4016, 0.3896



Deuteranomaly

45.0250, 0.4277, 0.3912



Tritanomaly

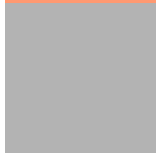
45.0257, 0.4277, 0.3377

Monochromacy



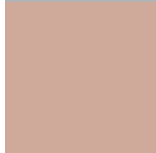
Original Color

45.2347, 0.4548, 0.3700



Achromatopsia

45.0786, 0.3127, 0.3290



Achromatomaly

44.3814, 0.3608, 0.3479

CSS Examples

Text

The CSS property to change the color of the text to Yxy 45.2347, 0.4548, 0.3700 is called "color". The color property can be set on classes, ids or directly on the HTML element.

This example shows how text in the color `rgb(255, 153, 113)` looks like.

```
.text, #text, p{  
    color:rgb(255, 153, 113)  
}
```

If you want to add a text shadow in that color use the text-shadow property, you can generate a text shadow directly with our [CSS Text Shadow Generator](#).

Here you see how black text with a 4 pixel rgb(255, 153, 113) colored shadow looks like.

```
.shadow{ text-shadow: 4px 4px 2px rgb(255, 153, 113) }
```

Border

The CSS property to change the border of an element to Yxy 45.2347, 0.4548, 0.3700 is called "border". The border property can be set on classes, ids or directly on the HTML element.

This example shows the color as border, it can be applied via the CSS property "border" or "border-color".

```
.border, #border, table{ border:4px solid rgb(255, 153, 113) }
```

If only the border color should be changed use the property `border-color`.

```
.border{ border-color:rgb(255, 153, 113) }
```

If you want to add a box shadow in that color use:

Here you see how a box with a 4 pixel `rgb(255, 153, 113)` colored shadow looks like.

```
.boxshadow{ -moz-box-shadow:4px 4px 4px  
4px rgb(255, 153, 113); -webkit-box-  
shadow:4px 4px 4px 4px rgb(255, 153, 113);  
box-shadow:4px 4px 4px 4px rgb(255, 153,  
113) }
```


Background

The CSS property to change the background color of an element to Yxy 45.2347, 0.4548, 0.3700 is called "background". The background property can be set on classes, ids or directly on the HTML element.

```
.background, #background, body{  
background: rgb(255, 153, 113) }
```

If only the background color should be changed can be used:

```
.background{ background-color: rgb(255,  
153, 113) }
```

This example shows the color as background, it is applied via the CSS property "background".

To optimize and compress your CSS code, you can use our [online CSS compressor and optimizer](#) based on csstidy. If you want to create a linear or radial gradient as background or border, check our [CSS Gradient Generator](#).

Hey! You found this booklet interesting? Support Converting Colors with the new Membership Option!

The pro membership hides all ads, plus gives you double the colors in the color bucket, and more awesome pro features!

[Learn more, Memberships starting at \\$2.50/m!](#)

**Follow me
on Twitter!**

@ConvertingColor