

Converting Colors

$Yxy(45.3695, 0.3544, 0.3467)$

Have a look what the booklet for
Yxy(45.3695, 0.3544, 0.3467)
contains.

Yxy(45.3695, 0.3544, 0.3467)	3
Conversions	4
Details	6
Harmonies	12
Previews	24
Color Blindness Simulation	27
CSS Examples	30

Color

Yxy(45.3695, 0.3544, 0.3467)

Conversions

Conversions Part 1

Format	Color
Hex	CDAD9F
RGB	205, 173, 159
RGB Percent	80%, 68%, 62%
CMY	0.1961, 0.3215, 0.3765
CMYK	0.00, 0.16, 0.22, 0.20
HSL	18°, 31%, 71%
HSV	18°, 22%, 80%
XYZ	46.3771, 45.3695, 39.1143
YIQ	180.9720, 23.5660, 2.4300

Conversions

Conversions Part 2

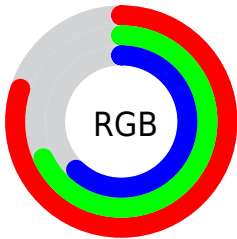
Format	Color
RYB	205, 179, 159
Decimal	13479327
CIELab	73.13, 9.43, 11.51
CIELCh	73, 14.878, 50.654
Yxy	45.3695, 0.3544, 0.3467
Android (android.graphics.Color)	4291669407 (0xFFCDAD9F)
YUV	180.9720, -10.8322, 21.0726
Hunter-Lab	67.3569, 5.0278, 12.7199

Details

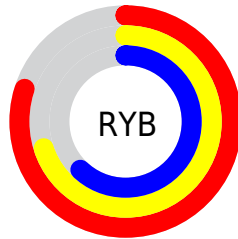
The Yxy color **45.3695, 0.3544, 0.3467** is a light color, and the websafe version is hex **CC9999**. A complement of this color would be **49.0354, 0.2783, 0.3106**, and the grayscale version is **46.2434, 0.3127, 0.3290**.

A 20% lighter version of the original color is **81.6018, 0.3411, 0.3431**, and **21.2415, 0.3657, 0.3512** is the 20% darker color. If you saturate the color by 10%, you get **39.5384, 0.3786, 0.3551**, and if you desaturate by 10%, it is **51.9063, 0.3338, 0.3385**.

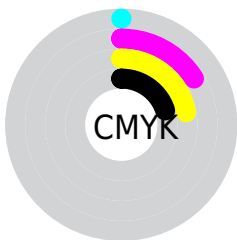
Distribution



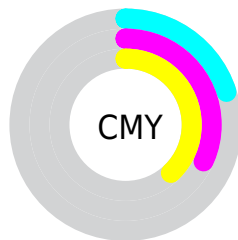
- Red (80%)
- Green (68%)
- Blue (62%)



- Red (80%)
- Yellow (70%)
- Blue (62%)



- Cyan (0%)
- Magenta (16%)
- Yellow (22%)
- Black (20%)





- Cyan (20%)
- Magenta (32%)
- Yellow (38%)

Brightness & Saturation Gradients


These gradients show how the Yxy color 45.3695, 0.3544, 0.3467 changes by changing the brightness by 10 percent. The first figure shows a shift by +10% for each color and the second figure -10%.


Similar to the brightness gradients but the following saturation gradients show a change of the Yxy color 45.3695, 0.3544, 0.3467 by changing the saturation by 10% instead.


 45.3695, 0.3544,
0.3467


 45.3695, 0.3544,
0.3467


368.2680, 0.3333,
0.3381

 31.7486, 0.3597,
0.3487


 83.2746, 0.3467,
0.3437

 21.1695, 0.3666,
0.3513


 108.3276, 0.3438,
0.3425

 13.2480, 0.3758,
0.3546


137.9600, 0.3414,
0.3415

 7.5995, 0.3888,
0.3589

172.5563, 0.3393,
0.3406

 3.8398, 0.4083,
0.3649

212.5009, 0.3375,
0.3399

 1.5843, 0.4419,
0.3741

258.1781, 0.3359,

 0.3470, 0.6175,

0.3392

0.3825

309.9723, 0.3345,
0.3387

0.0000, 0.0000,
0.0000

45.3695, 0.3544,
0.3467

45.3695, 0.3544,
0.3467

39.5384, 0.3786,
0.3551

51.9063, 0.3338,
0.3385

34.3827, 0.4068,
0.3634

59.1653, 0.3165,
0.3308

29.8790, 0.4389,
0.3708

67.1705, 0.3019,
0.3236

26.0002, 0.4743,
0.3764

75.9426, 0.2896,
0.3171

22.7170, 0.5111,
0.3791

85.0759, 0.2826,
0.3177

■ 19.9976, 0.5466,
0.3777

■ 91.7182, 0.2833,
0.3289

■ 17.8067, 0.5773,
0.3716

■ 16.4697, 0.5962,
0.3648

Harmonies

Analogous

The Analogous color harmony consists of three colors that are next to each other on the color wheel.



45.3695, 0.3480, 0.3291



45.3695, 0.3544, 0.3467



45.3695, 0.3491, 0.3605

Triad

The Triadic color harmony groups three colors that are evenly spaced from another and form a triangle on the color wheel.



45.3695, 0.3544, 0.3467



45.3695, 0.2932, 0.3468



45.3695, 0.2910, 0.2939

Complementary

The Complementary color scheme is a pair of colors which are on the opposite of each other on the color wheel.



45.3695, 0.3544, 0.3467



49.0354, 0.2783, 0.3106

Split Complementary

Split-complementary colors differ from the complementary color scheme. The scheme consists of three colors, the original color and two neighbors of the complement color.



45.3695, 0.2772, 0.2972



45.3695, 0.3544, 0.3467



45.3695, 0.2785, 0.3273

Square

The Square scheme is like the rectangle color scheme, but the four colors are evenly spaced on the color wheel.



45.3695, 0.3544, 0.3467



45.3695, 0.3134, 0.3613



45.3695, 0.2728, 0.3092



45.3695, 0.3109, 0.2994

Rectangle

The Rectangle color scheme consists of four colors that form a rectangle on the color wheel.



45.3695, 0.3544, 0.3467



45.3695, 0.3399, 0.3654



45.3695, 0.2728, 0.3092



45.3695, 0.2855, 0.2940

Sweetspot

The Sweet Spot groups the original color and five complimentary colors.



45.3716, 0.3544, 0.3467



91.2366, 0.3242, 0.3343



41.5457, 0.3275, 0.2895



19.3728, 0.3253, 0.3348



0.0000, 0.0000, 0.0000



21.4041, 0.3127, 0.3290

Same Dimension

The Same Dimension uses a secret algorithm to generate beautiful new colors.



45.3716, 0.3544, 0.3467



69.4933, 0.3658, 0.3508



54.8692, 0.3485, 0.3740



11.7615, 0.3283, 0.3361



10.4019, 0.5937, 0.3668



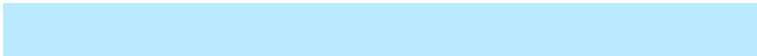
0.6713, 0.5546, 0.3978

Inverse Universe

The Inverse Universe completely reimagines the original color for something new.



49.0354, 0.2783, 0.3106



76.5430, 0.2709, 0.3060



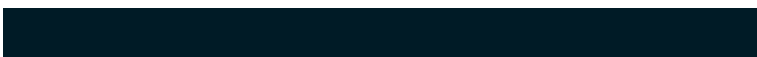
39.8582, 0.2760, 0.2795



12.1279, 0.2983, 0.3218



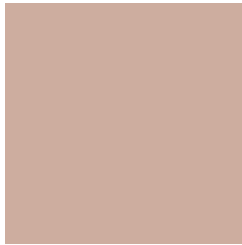
15.0687, 0.1965, 0.2274



0.9073, 0.2027, 0.2496

Previews

White Background



This preview shows how the Yxy color 45.3695, 0.3544, 0.3467 looks on a white background.

Color Contrast Check

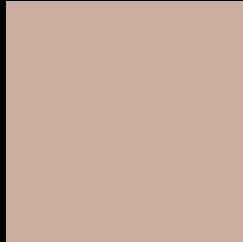
Large Text (above 18pt) WCAG AA × Fail

Any Text WCAG AA × Fail

Large Text (above 18pt) WCAG AAA × Fail

Any Text WCAG AAA × Fail

Black Background



This preview shows how the Yxy color 45.3695, 0.3544, 0.3467 looks on a black background.

Color Contrast Check

Large Text (above 18pt) WCAG AA ✓ Pass

Any Text WCAG AA ✓ Pass

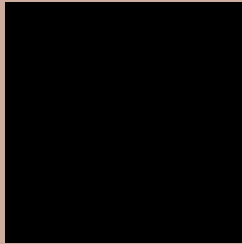
Large Text (above 18pt) WCAG AAA ✓ Pass

Any Text WCAG AAA ✓ Pass

If you want to check with other color combinations, try the [Color Contrast Checker](#).

Yxy 45.3695, 0.3544, 0.3467

Background



This preview shows how black text looks on a background with the Yxy color 45.3695, 0.3544, 0.3467.



This preview shows how white text looks on a background with the Yxy color 45.3695, 0.3544, 0.3467.

Color Blindness Simulation

Color vision deficiency is a very complex topic, and I could not describe the different causes any better than Wikipedia does, so if you want to learn more, you should check out their [article about color blindness](#).

Dichromacy



Original Color

45.3695, 0.3544, 0.3467

Protanopia

45.4136, 0.3338, 0.3514

Deuteranopia

45.3695, 0.3544, 0.3467



Tritanopia

45.5782, 0.3362, 0.3132

Trichromacy



Original Color

45.3695, 0.3544, 0.3467

Protanomaly

45.4868, 0.3414, 0.3498

Deuteranomaly

45.3695, 0.3544, 0.3467

Tritanomaly

45.4472, 0.3432, 0.3254

Monochromacy



Original Color

45.3695, 0.3544, 0.3467

Achromatopsia

46.2077, 0.3127, 0.3290

Achromatomaly

45.8051, 0.3274, 0.3355

CSS Examples

Text

The CSS property to change the color of the text to Yxy 45.3695, 0.3544, 0.3467 is called "color". The color property can be set on classes, ids or directly on the HTML element.

This example shows how text in the color `rgb(205, 173, 159)` looks like.

```
.text, #text, p{  
    color:rgb(205, 173, 159)  
}
```

If you want to add a text shadow in that color use the text-shadow property, you can generate a text shadow directly with our [CSS Text Shadow Generator](#).

Here you see how black text with a 4 pixel rgb(205, 173, 159) colored shadow looks like.

```
.shadow{ text-shadow: 4px 4px 2px rgb(205, 173, 159) }
```

Border

The CSS property to change the border of an element to Yxy 45.3695, 0.3544, 0.3467 is called "border". The border property can be set on classes, ids or directly on the HTML element.

This example shows the color as border, it can be applied via the CSS property "border" or "border-color".

```
.border, #border, table{ border:4px solid rgb(205, 173, 159) }
```

If only the border color should be changed use the property `border-color`.

```
.border{ border-color:rgb(205, 173, 159) }
```

If you want to add a box shadow in that color use:

Here you see how a box with a 4 pixel `rgb(205, 173, 159)` colored shadow looks like.

```
.boxshadow{ -moz-box-shadow:4px 4px 4px  
4px rgb(205, 173, 159); -webkit-box-  
shadow:4px 4px 4px 4px rgb(205, 173, 159);  
box-shadow:4px 4px 4px 4px rgb(205, 173,  
159) }
```


Background

The CSS property to change the background color of an element to Yxy 45.3695, 0.3544, 0.3467 is called "background". The background property can be set on classes, ids or directly on the HTML element.

```
.background, #background, body{  
background: rgb(205, 173, 159) }
```

If only the background color should be changed can be used:

```
.background{ background-color: rgb(205,  
173, 159) }
```

This example shows the color as background, it is applied via the CSS property "background".

To optimize and compress your CSS code, you can use our [online CSS compressor and optimizer](#) based on csstidy. If you want to create a linear or radial gradient as background or border, check our [CSS Gradient Generator](#).

Hey! You found this booklet interesting? Support Converting Colors with the new Membership Option!

The pro membership hides all ads, plus gives you double the colors in the color bucket, and more awesome pro features!

[Learn more, Memberships starting at \\$2.50/m!](#)

**Follow me
on Twitter!**

@ConvertingColor