

Converting Colors

$Yxy(45.4282, 0.3178, 0.3188)$

Have a look what the booklet for
Yxy(45.4282, 0.3178, 0.3188)
contains.

Yxy(45.3302, 0.3176, 0.3188)	3
Conversions	4
Details	6
Harmonies	12
Previews	24
Color Blindness Simulation	27
CSS Examples	30

Color

Yxy(45.3302, 0.3176, 0.3188)

Conversions

Conversions Part 1

Format	Color
Hex	BDB0B8
RGB	189, 176, 184
RGB Percent	74%, 69%, 72%
CMY	0.2588, 0.3098, 0.2785
CMYK	0.00, 0.07, 0.03, 0.26
HSL	323°, 9%, 72%
HSV	323°, 7%, 74%
XYZ	45.1596, 45.3302, 51.7003
YIQ	180.7990, 5.1800, 5.2440

Conversions

Conversions Part 2

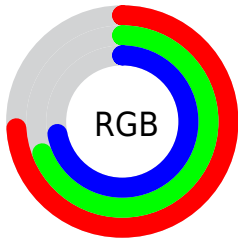
Format	Color
R _Y B	189, 176, 184
Decimal	12431544
CIE Lab	73.11, 6.07, -2.39
CIE LCh	73, 6.524, 338.470
Yxy	45.3302, 0.3176, 0.3188
Android (android.graphics.Color)	4290621624 (0xFFBDB0B8)
YUV	180.7990, 1.5781, 7.1923
Hunter-Lab	67.3277, 1.9041, 1.6012

Details

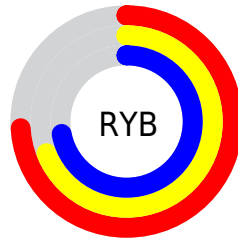
The Yxy color **45.3302, 0.3176, 0.3188** is a light color, and the websafe version is hex **CCCCCC**. A complement of this color would be **48.9616, 0.3081, 0.3394**, and the grayscale version is **46.0833, 0.3127, 0.3290**.

A 20% lighter version of the original color is **83.4170, 0.3165, 0.3210**, and **21.2882, 0.3193, 0.3168** is the 20% darker color. If you saturate the color by 10%, you get **38.1302, 0.3258, 0.3033**, and if you desaturate by 10%, it is **53.5818, 0.3107, 0.3335**.

Distribution



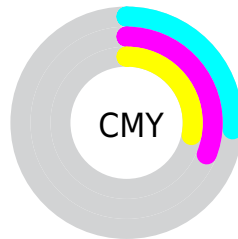
- Red (74%)
- Green (69%)
- Blue (72%)



- Red (74%)
- Yellow (69%)
- Blue (72%)



- Cyan (0%)
- Magenta (7%)
- Yellow (3%)
- Black (26%)



- Cyan (26%)
- Magenta (31%)
- Yellow (28%)

Brightness & Saturation Gradients

These gradients show how the Yxy color 45.3302, 0.3176, 0.3188 changes by changing the brightness by 10 percent. The first figure shows a shift by +10% for each color and the second figure -10%.

Similar to the brightness gradients but the following saturation gradients show a change of the Yxy color 45.3302, 0.3176, 0.3188 by changing the saturation by 10% instead.

■ 45.3302, 0.3176,
0.3188

■ 45.3302, 0.3176,
0.3188

368.1092, 0.3152,
0.3239

■ 31.7176, 0.3182,
0.3175

■ 83.2157, 0.3167,
0.3206

■ 21.1459, 0.3190,
0.3159

108.2574, 0.3164,
0.3213

■ 13.2307, 0.3200,
0.3137

137.8775, 0.3161,
0.3219

■ 7.5876, 0.3215,
0.3107

172.4605, 0.3159,
0.3224

■ 3.8322, 0.3236,
0.3062

212.3908, 0.3157,
0.3229

■ 1.5802, 0.3272,
0.2987

258.0528, 0.3155,

■ 0.3442, 0.3491,

0.3233

0.2528

309.8308, 0.3153,
0.3236

0.0000, 0.0000,
0.0000

45.3302, 0.3176,
0.3188

45.3302, 0.3176,
0.3188

38.1302, 0.3258,
0.3033

53.5818, 0.3107,
0.3335

31.9334, 0.3356,
0.2873

62.9192, 0.3049,
0.3473

26.6960, 0.3470,
0.2713

73.3826, 0.3001,
0.3600

22.3690, 0.3602,
0.2560

85.0079, 0.2961,
0.3718

18.8990, 0.3750,
0.2422

87.5335, 0.2923,
0.3669

■ 16.2269, 0.3912,
0.2310

■ 87.9307, 0.2885,
0.3586

■ 14.2859, 0.4085,
0.2236

■ 88.3451, 0.2847,
0.3505

■ 12.9984, 0.4261,
0.2210

■ 88.7768, 0.2809,
0.3424

■ 12.2585, 0.4435,
0.2234

■ 89.2261, 0.2773,
0.3345

Harmonies

Analogous

The Analogous color harmony consists of three colors that are next to each other on the color wheel.



45.3302, 0.3083, 0.3143



45.3302, 0.3176, 0.3188



45.3302, 0.3257, 0.3260

Triad

The Triadic color harmony groups three colors that are evenly spaced from another and form a triangle on the color wheel.



45.3302, 0.3176, 0.3188



45.3302, 0.3252, 0.3447



45.3302, 0.2954, 0.3236

Complementary

The Complementary color scheme is a pair of colors which are on the opposite of each other on the color wheel.



45.3302, 0.3176, 0.3188



48.9616, 0.3081, 0.3394

Split Complementary

Split-complementary colors differ from the complementary color scheme. The scheme consists of three colors, the original color and two neighbors of the complement color.



45.3302, 0.2998, 0.3319



45.3302, 0.3176, 0.3188



45.3302, 0.3170, 0.3443

Square

The Square scheme is like the rectangle color scheme, but the four colors are evenly spaced on the color wheel.



45.3302, 0.3176, 0.3188



45.3302, 0.3301, 0.3409



45.3302, 0.3077, 0.3396



45.3302, 0.2956, 0.3169

Rectangle

The Rectangle color scheme consists of four colors that form a rectangle on the color wheel.



45.3302, 0.3176, 0.3188



45.3302, 0.3293, 0.3314



45.3302, 0.3077, 0.3396



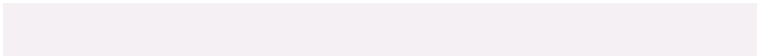
45.3302, 0.2964, 0.3263

Sweetspot

The Sweet Spot groups the original color and five complimentary colors.



45.3322, 0.3176, 0.3188



88.1056, 0.3141, 0.3260



44.5507, 0.3066, 0.3121



18.9799, 0.3140, 0.3262



95.5105, 0.3127, 0.3290



19.5994, 0.3127, 0.3290

Same Dimension

The Same Dimension uses a secret algorithm to generate beautiful new colors.



45.3322, 0.3176, 0.3188



79.4713, 0.3186, 0.3169



45.0680, 0.3230, 0.3271



9.6320, 0.3195, 0.3150



8.1411, 0.4468, 0.2235



0.3313, 0.4092, 0.2028

Inverse Universe

The Inverse Universe completely reimagines the original color for something new.



45.3322, 0.3176, 0.3188



79.4713, 0.3186, 0.3169



49.2325, 0.3033, 0.3309



9.6320, 0.3195, 0.3150



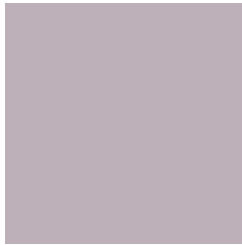
8.1411, 0.4468, 0.2235



0.3313, 0.4092, 0.2028

Previews

White Background



This preview shows how the Yxy color 45.3302, 0.3176, 0.3188 looks on a white background.

Color Contrast Check

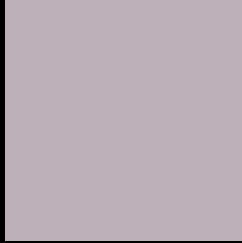
Large Text (above 18pt) WCAG AA × Fail

Any Text WCAG AA × Fail

Large Text (above 18pt) WCAG AAA × Fail

Any Text WCAG AAA × Fail

Black Background



This preview shows how the Yxy color 45.3302, 0.3176, 0.3188 looks on a black background.

Color Contrast Check

Large Text (above 18pt) WCAG AA ✓ Pass

Any Text WCAG AA ✓ Pass

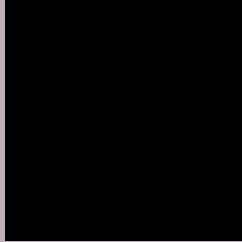
Large Text (above 18pt) WCAG AAA ✓ Pass

Any Text WCAG AAA ✓ Pass

If you want to check with other color combinations, try the [Color Contrast Checker](#).

Yxy 45.3302, 0.3176, 0.3188

Background



This preview shows how black text looks on a background with the Yxy color 45.3302, 0.3176, 0.3188.



This preview shows how white text looks on a background with the Yxy color 45.3302, 0.3176, 0.3188.

Color Blindness Simulation

Color vision deficiency is a very complex topic, and I could not describe the different causes any better than Wikipedia does, so if you want to learn more, you should check out their [article about color blindness](#).

Dichromacy



Original Color

45.3302, 0.3176, 0.3188

Protanopia

45.5667, 0.3097, 0.3212

Deuteranopia

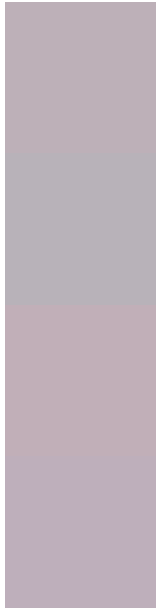
45.3349, 0.3231, 0.3164



Tritanopia

45.2812, 0.3144, 0.3112

Trichromacy



Original Color

45.3302, 0.3176, 0.3188

Protanomaly

45.5339, 0.3123, 0.3199

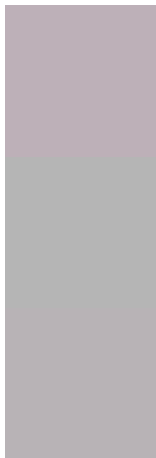
Deuteranomaly

45.4581, 0.3212, 0.3176

Tritanomaly

45.1950, 0.3161, 0.3137

Monochromacy



Original Color

45.3302, 0.3176, 0.3188

Achromatopsia

46.2077, 0.3127, 0.3290

Achromatomaly

45.8079, 0.3146, 0.3251

CSS Examples

Text

The CSS property to change the color of the text to Yxy 45.3302, 0.3176, 0.3188 is called "color". The color property can be set on classes, ids or directly on the HTML element.

This example shows how text in the color `rgb(189, 176, 184)` looks like.

```
.text, #text, p{  
    color:rgb(189, 176, 184)  
}
```

If you want to add a text shadow in that color use the text-shadow property, you can generate a text shadow directly with our [CSS Text Shadow Generator](#).

Here you see how black text with a 4 pixel rgb(189, 176, 184) colored shadow looks like.

```
.shadow{ text-shadow: 4px 4px 2px rgb(189, 176, 184) }
```

Border

The CSS property to change the border of an element to Yxy 45.3302, 0.3176, 0.3188 is called "border". The border property can be set on classes, ids or directly on the HTML element.

This example shows the color as border, it can be applied via the CSS property "border" or "border-color".

```
.border, #border, table{ border:4px solid rgb(189, 176, 184) }
```

If only the border color should be changed use the property `border-color`.

```
.border{ border-color:rgb(189, 176, 184) }
```

If you want to add a box shadow in that color use:

Here you see how a box with a 4 pixel `rgb(189, 176, 184)` colored shadow looks like.

```
.boxshadow{ -moz-box-shadow:4px 4px 4px  
4px rgb(189, 176, 184); -webkit-box-  
shadow:4px 4px 4px 4px rgb(189, 176, 184);  
box-shadow:4px 4px 4px 4px rgb(189, 176,  
184) }
```


Background

The CSS property to change the background color of an element to Yxy 45.3302, 0.3176, 0.3188 is called "background". The background property can be set on classes, ids or directly on the HTML element.

```
.background, #background, body{  
background: rgb(189, 176, 184) }
```

If only the background color should be changed can be used:

```
.background{ background-color: rgb(189,  
176, 184) }
```

This example shows the color as background, it is applied via the CSS property "background".

To optimize and compress your CSS code, you can use our [online CSS compressor and optimizer](#) based on csstidy. If you want to create a linear or radial gradient as background or border, check our [CSS Gradient Generator](#).

Hey! You found this booklet interesting? Support Converting Colors with the new Membership Option!

The pro membership hides all ads, plus gives you double the colors in the color bucket, and more awesome pro features!

[Learn more, Memberships starting at \\$2.50/m!](#)

**Follow me
on Twitter!**

@ConvertingColor