

Converting Colors

$Y_{xy}(45.4585, 0.3428, 0.3301)$

Have a look what the booklet for
Yxy(45.4585, 0.3428, 0.3301)
contains.

Yxy(45.2827, 0.3429, 0.3303)	3
<i>Conversions</i>	4
<i>Details</i>	6
<i>Harmonies</i>	12
<i>Previews</i>	24
<i>Color Blindness Simulation</i>	27
<i>CSS Examples</i>	30

Color

Yxy(45.2827, 0.3429, 0.3303)

Conversions

Conversions Part 1

Format	Color
Hex	CCACAB
RGB	204, 172, 171
RGB Percent	80%, 67%, 67%
CMY	0.1999, 0.3255, 0.3293
CMYK	0.00, 0.16, 0.16, 0.20
HSL	2°, 24%, 74%
HSV	2°, 16%, 80%
XYZ	47.0101, 45.2827, 44.8029
YIQ	181.4540, 19.3930, 6.4730

Conversions

Conversions Part 2

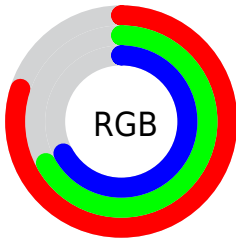
Format	Color
RYB	204, 172, 171
Decimal	13413547
CIELab	73.08, 11.46, 4.82
CIELCh	73, 12.435, 22.830
Yxy	45.2827, 0.3429, 0.3303
Android (android.graphics.Color)	4291603627 (0xFFCCACAB)
YUV	181.4540, -5.1538, 19.7728
Hunter-Lab	67.2924, 6.9374, 7.6298

Details

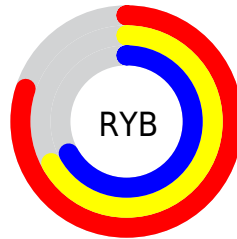
The Yxy color **45.2827, 0.3429, 0.3303** is a light color, and the websafe version is hex **CC9999**. A complement of this color would be **55.7544, 0.2884, 0.3277**, and the grayscale version is **46.4901, 0.3127, 0.3290**.

A 20% lighter version of the original color is **81.6892, 0.3331, 0.3301**, and **21.1544, 0.3509, 0.3308** is the 20% darker color. If you saturate the color by 10%, you get **37.5819, 0.3677, 0.3312**, and if you desaturate by 10%, it is **54.2306, 0.3230, 0.3295**.

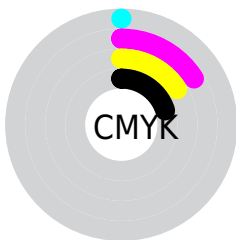
Distribution



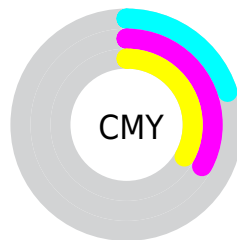
- Red (80%)
- Green (67%)
- Blue (67%)



- Red (80%)
- Yellow (67%)
- Blue (67%)



- Cyan (0%)
- Magenta (16%)
- Yellow (16%)
- Black (20%)



- Cyan (20%)
- Magenta (33%)
- Yellow (33%)

Brightness & Saturation Gradients


These gradients show how the Yxy color 45.2827, 0.3429, 0.3303 changes by changing the brightness by 10 percent. The first figure shows a shift by +10% for each color and the second figure -10%.


Similar to the brightness gradients but the following saturation gradients show a change of the Yxy color 45.2827, 0.3429, 0.3303 by changing the saturation by 10% instead.


 45.2827, 0.3429,
0.3303

 45.2827, 0.3429,
0.3303

367.9173, 0.3276,
0.3298

 31.6802, 0.3468,
0.3304

 83.1445, 0.3373,
0.3302

 21.1173, 0.3518,
0.3304


108.1725, 0.3352,
0.3301

 13.2098, 0.3585,
0.3305


137.7778, 0.3335,
0.3300

 7.5732, 0.3679,
0.3304

172.3448, 0.3320,
0.3300

 3.8231, 0.3823,
0.3301

212.2578, 0.3307,
0.3299

 1.5751, 0.4066,
0.3290

257.9013, 0.3295,

 0.3407, 0.6172,

0.3299

0.3484

309.6597, 0.3285,
0.3299

0.0000, 0.0000,
0.0000

45.2827, 0.3429,
0.3303

45.2827, 0.3429,
0.3303

37.5819, 0.3677,
0.3312

54.2306, 0.3230,
0.3295

31.0672, 0.3982,
0.3321

64.4711, 0.3070,
0.3287

25.6814, 0.4352,
0.3329

76.0548, 0.2941,
0.3280

21.3604, 0.4782,
0.3336

89.0278, 0.2837,
0.3274

18.0336, 0.5251,
0.3339

91.5797, 0.2827,
0.3289

■ 15.6219, 0.5709,
0.3336

■ 14.0341, 0.6087,
0.3328

■ 13.1600, 0.6322,
0.3315

■ 12.9701, 0.6382,
0.3315

Harmonies

Analogous

The Analogous color harmony consists of three colors that are next to each other on the color wheel.



45.2827, 0.3300, 0.3157



45.2827, 0.3429, 0.3303



45.2827, 0.3475, 0.3450

Triad

The Triadic color harmony groups three colors that are evenly spaced from another and form a triangle on the color wheel.



45.2827, 0.3429, 0.3303



45.2827, 0.3121, 0.3552



45.2827, 0.2835, 0.3019

Complementary

The Complementary color scheme is a pair of colors which are on the opposite of each other on the color wheel.



45.2827, 0.3429, 0.3303



55.7544, 0.2884, 0.3277

Split Complementary

Split-complementary colors differ from the complementary color scheme. The scheme consists of three colors, the original color and two neighbors of the complement color.



45.2827, 0.2791, 0.3116



45.2827, 0.3429, 0.3303



45.2827, 0.2953, 0.3427

Square

The Square scheme is like the rectangle color scheme, but the four colors are evenly spaced on the color wheel.



45.2827, 0.3429, 0.3303



45.2827, 0.3294, 0.3600



45.2827, 0.2834, 0.3265



45.2827, 0.2956, 0.2996

Rectangle

The Rectangle color scheme consists of four colors that form a rectangle on the color wheel.



45.2827, 0.3429, 0.3303



45.2827, 0.3452, 0.3530



45.2827, 0.2834, 0.3265



45.2827, 0.2811, 0.3044

Sweetspot

The Sweet Spot groups the original color and five complimentary colors.



45.2847, 0.3429, 0.3303



91.5630, 0.3210, 0.3294



46.3092, 0.3150, 0.2900



19.3540, 0.3223, 0.3294



0.0000, 0.0000, 0.0000



21.4041, 0.3127, 0.3290

Same Dimension

The Same Dimension uses a secret algorithm to generate beautiful new colors.



45.2847, 0.3429, 0.3303



70.8433, 0.3500, 0.3306



51.7776, 0.3398, 0.3500



11.2657, 0.3289, 0.3297



8.1859, 0.6376, 0.3319



0.4413, 0.6294, 0.3384

Inverse Universe

The Inverse Universe completely reimagines the original color for something new.



55.7544, 0.2884, 0.3277



91.0339, 0.2840, 0.3274



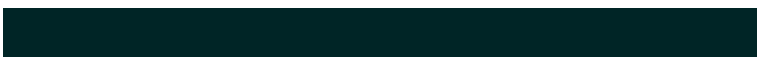
48.5496, 0.2875, 0.3070



12.6681, 0.2984, 0.3283



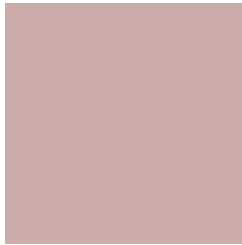
28.1883, 0.2222, 0.3198



1.4724, 0.2227, 0.3217

Previews

White Background



This preview shows how the Yxy color 45.2827, 0.3429, 0.3303 looks on a white background.

Color Contrast Check

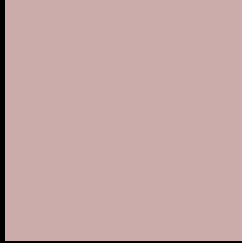
Large Text (above 18pt) WCAG AA × Fail

Any Text WCAG AA × Fail

Large Text (above 18pt) WCAG AAA × Fail

Any Text WCAG AAA × Fail

Black Background



This preview shows how the Yxy color 45.2827, 0.3429, 0.3303 looks on a black background.

Color Contrast Check

Large Text (above 18pt) WCAG AA ✓ Pass

Any Text WCAG AA ✓ Pass

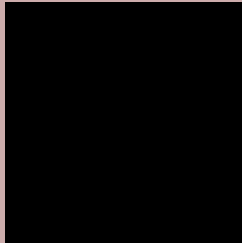
Large Text (above 18pt) WCAG AAA ✓ Pass

Any Text WCAG AAA ✓ Pass

If you want to check with other color combinations, try the [Color Contrast Checker](#).

Yxy 45.2827, 0.3429, 0.3303

Background



This preview shows how black text looks on a background with the Yxy color 45.2827, 0.3429, 0.3303.



This preview shows how white text looks on a background with the Yxy color 45.2827, 0.3429, 0.3303.

Color Blindness Simulation

Color vision deficiency is a very complex topic, and I could not describe the different causes any better than Wikipedia does, so if you want to learn more, you should check out their [article about color blindness](#).

Dichromacy



Original Color

45.2827, 0.3429, 0.3303

Protanopia

45.5257, 0.3203, 0.3343

Deuteranopia

45.1068, 0.3390, 0.3316



Tritanopia

45.2902, 0.3344, 0.3131

Trichromacy



Original Color

45.2827, 0.3429, 0.3303

Protanomaly

45.1830, 0.3277, 0.3316

Deuteranomaly

45.2449, 0.3399, 0.3316

Tritanomaly

45.3596, 0.3369, 0.3192

Monochromacy



Original Color

45.2827, 0.3429, 0.3303

Achromatopsia

46.2077, 0.3127, 0.3290

Achromatomaly

45.8339, 0.3232, 0.3303

CSS Examples

Text

The CSS property to change the color of the text to Yxy 45.2827, 0.3429, 0.3303 is called "color". The color property can be set on classes, ids or directly on the HTML element.

This example shows how text in the color `rgb(204, 172, 171)` looks like.

```
.text, #text, p{  
    color:rgb(204, 172, 171)  
}
```

If you want to add a text shadow in that color use the text-shadow property, you can generate a text shadow directly with our [CSS Text Shadow Generator](#).

Here you see how black text with a 4 pixel rgb(204, 172, 171) colored shadow looks like.

```
.shadow{ text-shadow: 4px 4px 2px rgb(204, 172, 171) }
```

Border

The CSS property to change the border of an element to Yxy 45.2827, 0.3429, 0.3303 is called "border". The border property can be set on classes, ids or directly on the HTML element.

This example shows the color as border, it can be applied via the CSS property "border" or "border-color".

```
.border, #border, table{ border:4px solid rgb(204, 172, 171) }
```

If only the border color should be changed use the property `border-color`.

```
.border{ border-color:rgb(204, 172, 171) }
```

If you want to add a box shadow in that color use:

Here you see how a box with a 4 pixel `rgb(204, 172, 171)` colored shadow looks like.

```
.boxshadow{ -moz-box-shadow:4px 4px 4px  
4px rgb(204, 172, 171); -webkit-box-  
shadow:4px 4px 4px 4px rgb(204, 172, 171);  
box-shadow:4px 4px 4px 4px rgb(204, 172,  
171) }
```


Background

The CSS property to change the background color of an element to Yxy 45.2827, 0.3429, 0.3303 is called "background". The background property can be set on classes, ids or directly on the HTML element.

```
.background, #background, body{  
background: rgb(204, 172, 171) }
```

If only the background color should be changed can be used:

```
.background{ background-color: rgb(204,  
172, 171) }
```

This example shows the color as background, it is applied via the CSS property "background".

To optimize and compress your CSS code, you can use our [online CSS compressor and optimizer](#) based on csstidy. If you want to create a linear or radial gradient as background or border, check our [CSS Gradient Generator](#).

Hey! You found this booklet interesting? Support Converting Colors with the new Membership Option!

The pro membership hides all ads, plus gives you double the colors in the color bucket, and more awesome pro features!

[Learn more, Memberships starting at \\$2.50/m!](#)

**Follow me
on Twitter!**

@ConvertingColor