

Converting Colors

$Y_{xy}(45.4653, 0.3516, 0.3251)$

Have a look what the booklet for
Yxy(45.4653, 0.3516, 0.3251)
contains.

Yxy(45.6506, 0.3520, 0.3255)	3
<i>Conversions</i>	4
<i>Details</i>	6
<i>Harmonies</i>	12
<i>Previews</i>	24
<i>Color Blindness Simulation</i>	27
<i>CSS Examples</i>	30

Color

Yxy(45.6506, 0.3520, 0.3255)

Conversions

Conversions Part 1

Format	Color
Hex	D6A9AC
RGB	214, 169, 172
RGB Percent	84%, 66%, 67%
CMY	0.1607, 0.3372, 0.3256
CMYK	0.00, 0.21, 0.20, 0.16
HSL	356°, 35%, 75%
HSV	356°, 21%, 84%
XYZ	49.3672, 45.6506, 45.2299
YIQ	182.7970, 25.8570, 10.4730

Conversions

Conversions Part 2

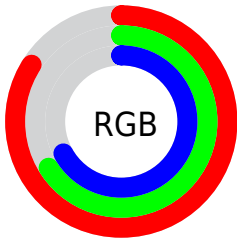
Format	Color
RYB	214, 169, 172
Decimal	14068140
CIELab	73.32, 16.92, 4.77
CIELCh	73, 17.584, 15.735
Yxy	45.6506, 0.3520, 0.3255
Android (android.graphics.Color)	4292258220 (0xFFD6A9AC)
YUV	182.7970, -5.3229, 27.3650
Hunter-Lab	67.5652, 12.1835, 7.6054

Details

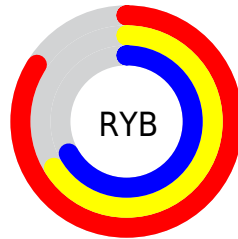
The Yxy color $45.6506, 0.3520, 0.3255$ is a light color, and the websafe version is hex $CC9999$. A complement of this color would be $61.2397, 0.2834, 0.3326$, and the grayscale version is $47.2570, 0.3127, 0.3290$.

A 20% lighter version of the original color is $80.1174, 0.3328, 0.3261$, and $21.4496, 0.3636, 0.3243$ is the 20% darker color. If you saturate the color by 10%, you get $37.6198, 0.3781, 0.3237$, and if you desaturate by 10%, it is $55.1043, 0.3310, 0.3272$.

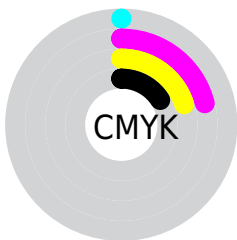
Distribution



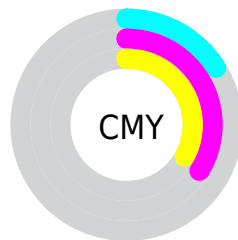
- Red (84%)
- Green (66%)
- Blue (67%)



- Red (84%)
- Yellow (66%)
- Blue (67%)



- Cyan (0%)
- Magenta (21%)
- Yellow (20%)
- Black (16%)



- Cyan (16%)
- Magenta (34%)
- Yellow (33%)

Brightness & Saturation Gradients


These gradients show how the Yxy color 45.6506, 0.3520, 0.3255 changes by changing the brightness by 10 percent. The first figure shows a shift by +10% for each color and the second figure -10%.


Similar to the brightness gradients but the following saturation gradients show a change of the Yxy color 45.6506, 0.3520, 0.3255 by changing the saturation by 10% instead.


 45.6506, 0.3520,
0.3255


 45.6506, 0.3520,
0.3255


369.4022, 0.3322,
0.3275

 31.9702, 0.3570,
0.3249


 83.6958, 0.3447,
0.3263

 21.3387, 0.3635,
0.3242


 108.8295, 0.3420,
0.3266

 13.3718, 0.3721,
0.3230


138.5496, 0.3398,
0.3268

 7.6851, 0.3844,
0.3214

173.2407, 0.3378,
0.3270

 3.8941, 0.4028,
0.3185

213.2871, 0.3361,
0.3271

 1.6145, 0.4338,
0.3130

259.0732, 0.3346,

 0.3673, 0.6372,

0.3273

0.3071

310.9834, 0.3333,
0.3274

0.0000, 0.0000,
0.0000

45.6506, 0.3520,
0.3255

45.6506, 0.3520,
0.3255

37.6198, 0.3781,
0.3237

55.1043, 0.3310,
0.3272

30.9372, 0.4101,
0.3221

66.0384, 0.3142,
0.3288

25.5307, 0.4484,
0.3207

78.5151, 0.3008,
0.3303

21.3190, 0.4921,
0.3199

92.5909, 0.2899,
0.3317

18.2115, 0.5385,
0.3202

93.0381, 0.2883,
0.3289

■ 16.1047, 0.5819,
0.3216

■ 14.8752, 0.6156,
0.3243

■ 14.3303, 0.6341,
0.3267

Harmonies

Analogous

The Analogous color harmony consists of three colors that are next to each other on the color wheel.



45.6506, 0.3314, 0.3062



45.6506, 0.3520, 0.3255



45.6506, 0.3617, 0.3463

Triad

The Triadic color harmony groups three colors that are evenly spaced from another and form a triangle on the color wheel.



45.6506, 0.3520, 0.3255



45.6506, 0.3176, 0.3692



45.6506, 0.2694, 0.2932

Complementary

The Complementary color scheme is a pair of colors which are on the opposite of each other on the color wheel.



45.6506, 0.3520, 0.3255



61.2397, 0.2834, 0.3326

Split Complementary

Split-complementary colors differ from the complementary color scheme. The scheme consists of three colors, the original color and two neighbors of the complement color.



45.6506, 0.2661, 0.3086



45.6506, 0.3520, 0.3255



45.6506, 0.2933, 0.3535

Square

The Square scheme is like the rectangle color scheme, but the four colors are evenly spaced on the color wheel.



45.6506, 0.3520, 0.3255



45.6506, 0.3412, 0.3727



45.6506, 0.2747, 0.3307



45.6506, 0.2838, 0.2878

Rectangle

The Rectangle color scheme consists of four colors that form a rectangle on the color wheel.



45.6506, 0.3520, 0.3255



45.6506, 0.3605, 0.3587



45.6506, 0.2747, 0.3307



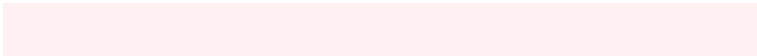
45.6506, 0.2670, 0.2973

Sweetspot

The Sweet Spot groups the original color and five complimentary colors.



45.6527, 0.3520, 0.3255



89.7374, 0.3222, 0.3280



47.0831, 0.3126, 0.2767



18.9791, 0.3233, 0.3279



0.0000, 0.0000, 0.0000



21.4041, 0.3127, 0.3290

Same Dimension

The Same Dimension uses a secret algorithm to generate beautiful new colors.



45.6527, 0.3520, 0.3255



62.5922, 0.3623, 0.3248



53.3461, 0.3500, 0.3524



12.4340, 0.3281, 0.3275



8.6660, 0.6324, 0.3258



0.5275, 0.6096, 0.3132

Inverse Universe

The Inverse Universe completely reimagines the original color for something new.



45.6527, 0.3520, 0.3255



62.5922, 0.3623, 0.3248



52.1012, 0.2799, 0.3044



12.4340, 0.3281, 0.3275



8.6660, 0.6324, 0.3258



0.5275, 0.6096, 0.3132

Previews

White Background



This preview shows how the Yxy color 45.6506, 0.3520, 0.3255 looks on a white background.

Color Contrast Check

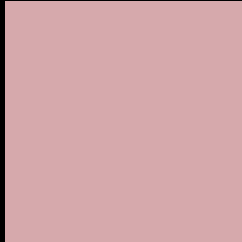
Large Text (above 18pt) WCAG AA × Fail

Any Text WCAG AA × Fail

Large Text (above 18pt) WCAG AAA × Fail

Any Text WCAG AAA × Fail

Black Background



This preview shows how the Yxy color 45.6506, 0.3520, 0.3255 looks on a black background.

Color Contrast Check

Large Text (above 18pt) WCAG AA ✓ Pass

Any Text WCAG AA ✓ Pass

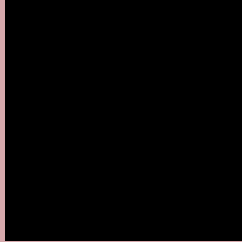
Large Text (above 18pt) WCAG AAA ✓ Pass

Any Text WCAG AAA ✓ Pass

If you want to check with other color combinations, try the [Color Contrast Checker](#).

Yxy 45.6506, 0.3520, 0.3255

Background



This preview shows how black text looks on a background with the Yxy color 45.6506, 0.3520, 0.3255.



This preview shows how white text looks on a background with the Yxy color 45.6506, 0.3520, 0.3255.

Color Blindness Simulation

Color vision deficiency is a very complex topic, and I could not describe the different causes any better than Wikipedia does, so if you want to learn more, you should check out their [article about color blindness](#).

Dichromacy



Original Color

45.6506, 0.3520, 0.3255

Protanopia

45.6449, 0.3179, 0.3303

Deuteranopia

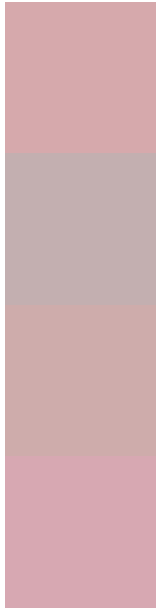
45.6299, 0.3397, 0.3329



Tritanopia

45.7885, 0.3449, 0.3135

Trichromacy



Original Color

45.6506, 0.3520, 0.3255

Protanomaly

45.3966, 0.3298, 0.3278

Deuteranomaly

45.5671, 0.3448, 0.3303

Tritanomaly

45.6667, 0.3476, 0.3171

Monochromacy



Original Color

45.6506, 0.3520, 0.3255

Achromatopsia

47.3531, 0.3127, 0.3290

Achromatomaly

46.5648, 0.3259, 0.3278

CSS Examples

Text

The CSS property to change the color of the text to Yxy 45.6506, 0.3520, 0.3255 is called "color". The color property can be set on classes, ids or directly on the HTML element.

This example shows how text in the color `rgb(214, 169, 172)` looks like.

```
.text, #text, p{  
    color:rgb(214, 169, 172)  
}
```

If you want to add a text shadow in that color use the text-shadow property, you can generate a text shadow directly with our [CSS Text Shadow Generator](#).

Here you see how black text with a 4 pixel rgb(214, 169, 172) colored shadow looks like.

```
.shadow{ text-shadow: 4px 4px 2px rgb(214, 169, 172) }
```

Border

The CSS property to change the border of an element to Yxy 45.6506, 0.3520, 0.3255 is called "border". The border property can be set on classes, ids or directly on the HTML element.

This example shows the color as border, it can be applied via the CSS property "border" or "border-color".

```
.border, #border, table{ border:4px solid rgb(214, 169, 172) }
```

If only the border color should be changed use the property `border-color`.

```
.border{ border-color:rgb(214, 169, 172) }
```

If you want to add a box shadow in that color use:

Here you see how a box with a 4 pixel `rgb(214, 169, 172)` colored shadow looks like.

```
.boxshadow{ -moz-box-shadow:4px 4px 4px  
4px rgb(214, 169, 172); -webkit-box-  
shadow:4px 4px 4px 4px rgb(214, 169, 172);  
box-shadow:4px 4px 4px 4px rgb(214, 169,  
172) }
```


Background

The CSS property to change the background color of an element to Yxy 45.6506, 0.3520, 0.3255 is called "background". The background property can be set on classes, ids or directly on the HTML element.

```
.background, #background, body{  
background: rgb(214, 169, 172) }
```

If only the background color should be changed can be used:

```
.background{ background-color: rgb(214,  
169, 172) }
```

This example shows the color as background, it is applied via the CSS property "background".

To optimize and compress your CSS code, you can use our [online CSS compressor and optimizer](#) based on csstidy. If you want to create a linear or radial gradient as background or border, check our [CSS Gradient Generator](#).

Hey! You found this booklet interesting? Support Converting Colors with the new Membership Option!

The pro membership hides all ads, plus gives you double the colors in the color bucket, and more awesome pro features!

[Learn more, Memberships starting at \\$2.50/m!](#)

**Follow me
on Twitter!**

@ConvertingColor