

Converting Colors

$Y_{xy}(45.6675, 0.3400, 0.3222)$

Have a look what the booklet for
Yxy(45.6675, 0.3400, 0.3222)
contains.

Yxy(45.5655, 0.3405, 0.3217)	3
Conversions	4
Details	6
Harmonies	12
Previews	24
Color Blindness Simulation	27
CSS Examples	30

Color

Yxy(45.5655, 0.3405, 0.3217)

Conversions

Conversions Part 1

Format	Color
Hex	CFABB1
RGB	207, 171, 177
RGB Percent	81%, 67%, 69%
CMY	0.1883, 0.3294, 0.3059
CMYK	0.00, 0.17, 0.14, 0.19
HSL	350°, 27%, 74%
HSV	350°, 17%, 81%
XYZ	48.2283, 45.5655, 47.8459
YIQ	182.4480, 19.5300, 9.4980

Conversions

Conversions Part 2

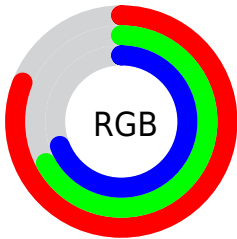
Format	Color
R _Y B	207, 171, 177
Decimal	13609905
CIE Lab	73.26, 14.05, 1.85
CIE LCh	73, 14.171, 7.499
Yxy	45.5655, 0.3405, 0.3217
Android (android.graphics.Color)	4291799985 (0xFFCFABB1)
YUV	182.4480, -2.6859, 21.5321
Hunter-Lab	67.5022, 9.4040, 5.2265

Details

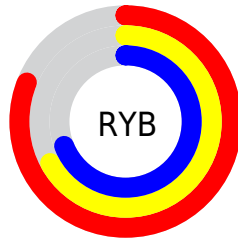
The Yxy color **45.5655, 0.3405, 0.3217** is a light color, and the websafe version is hex **CC9999**. A complement of this color would be **57.4971, 0.2905, 0.3365**, and the grayscale version is **47.0436, 0.3127, 0.3290**.

A 20% lighter version of the original color is **81.5359, 0.3285, 0.3221**, and **21.3497, 0.3475, 0.3192** is the 20% darker color. If you saturate the color by 10%, you get **37.7049, 0.3618, 0.3172**, and if you desaturate by 10%, it is **54.7417, 0.3233, 0.3260**.

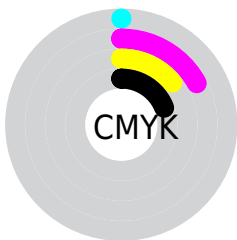
Distribution



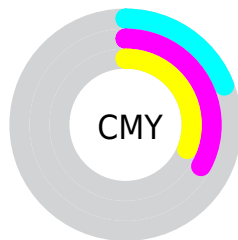
- Red (81%)
- Green (67%)
- Blue (69%)



- Red (81%)
- Yellow (67%)
- Blue (69%)



- Cyan (0%)
- Magenta (17%)
- Yellow (14%)
- Black (19%)





- Cyan (19%)
- Magenta (33%)
- Yellow (31%)

Brightness & Saturation Gradients


These gradients show how the Yxy color 45.5655, 0.3405, 0.3217 changes by changing the brightness by 10 percent. The first figure shows a shift by +10% for each color and the second figure -10%.


Similar to the brightness gradients but the following saturation gradients show a change of the Yxy color 45.5655, 0.3405, 0.3217 by changing the saturation by 10% instead.

 45.5655, 0.3405,
0.3217

 45.5655, 0.3405,
0.3217

369.0590, 0.3265,
0.3255

 31.9031, 0.3440,
0.3207


 83.5684, 0.3354,
0.3231

 21.2875, 0.3486,
0.3195

108.6776, 0.3335,
0.3236

 13.3343, 0.3547,
0.3178


138.3712, 0.3319,
0.3240

 7.6592, 0.3632,
0.3153


173.0336, 0.3305,
0.3244

 3.8776, 0.3762,
0.3116

213.0492, 0.3293,
0.3247

 1.6053, 0.3980,
0.3050

258.8024, 0.3283,

 0.3612, 0.5233,

0.3250

0.2754

310.6775, 0.3273,
0.3252

0.0000, 0.0000,
0.0000

45.5655, 0.3405,
0.3217

45.5655, 0.3405,
0.3217

37.7049, 0.3618,
0.3172

54.7417, 0.3233,
0.3260

31.0937, 0.3880,
0.3127

65.2835, 0.3094,
0.3300

25.6692, 0.4197,
0.3086

77.2459, 0.2981,
0.3337

21.3608, 0.4568,
0.3055

90.6789, 0.2890,
0.3371

18.0903, 0.4982,
0.3040

92.0040, 0.2844,
0.3289

■ 15.7696, 0.5409,
0.3051

■ 14.2956, 0.5801,
0.3092

■ 13.5278, 0.6106,
0.3158

■ 13.3821, 0.6172,
0.3174

Harmonies

Analogous

The Analogous color harmony consists of three colors that are next to each other on the color wheel.



45.5655, 0.3225, 0.3069



45.5655, 0.3405, 0.3217



45.5655, 0.3510, 0.3387

Triad

The Triadic color harmony groups three colors that are evenly spaced from another and form a triangle on the color wheel.



45.5655, 0.3405, 0.3217



45.5655, 0.3223, 0.3630



45.5655, 0.2759, 0.3029

Complementary

The Complementary color scheme is a pair of colors which are on the opposite of each other on the color wheel.



45.5655, 0.3405, 0.3217



57.4971, 0.2905, 0.3365

Split Complementary

Split-complementary colors differ from the complementary color scheme. The scheme consists of three colors, the original color and two neighbors of the complement color.



45.5655, 0.2759, 0.3173



45.5655, 0.3405, 0.3217



45.5655, 0.3022, 0.3528

Square

The Square scheme is like the rectangle color scheme, but the four colors are evenly spaced on the color wheel.



45.5655, 0.3405, 0.3217



45.5655, 0.3402, 0.3631



45.5655, 0.2854, 0.3357



45.5655, 0.2853, 0.2959

Rectangle

The Rectangle color scheme consists of four colors that form a rectangle on the color wheel.



45.5655, 0.3405, 0.3217



45.5655, 0.3522, 0.3494



45.5655, 0.2854, 0.3357



45.5655, 0.2748, 0.3070

Sweetspot

The Sweet Spot groups the original color and five complimentary colors.



45.5675, 0.3405, 0.3217



91.4674, 0.3198, 0.3270



46.0505, 0.3095, 0.2856



19.3309, 0.3208, 0.3267



0.0000, 0.0000, 0.0000



21.4041, 0.3127, 0.3290

Same Dimension

The Same Dimension uses a secret algorithm to generate beautiful new colors.



45.5675, 0.3405, 0.3217



67.9146, 0.3482, 0.3200



50.0728, 0.3434, 0.3438



11.8399, 0.3265, 0.3252



8.4417, 0.6144, 0.3159



0.4822, 0.5671, 0.2897

Inverse Universe

The Inverse Universe completely reimagines the original color for something new.



45.5675, 0.3405, 0.3217



67.9146, 0.3482, 0.3200



52.1922, 0.2860, 0.3137



11.8399, 0.3265, 0.3252



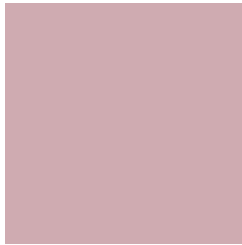
8.4417, 0.6144, 0.3159



0.4822, 0.5671, 0.2897

Previews

White Background



This preview shows how the Yxy color 45.5655, 0.3405, 0.3217 looks on a white background.

Color Contrast Check

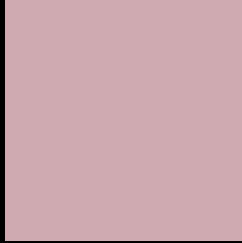
Large Text (above 18pt) WCAG AA × Fail

Any Text WCAG AA × Fail

Large Text (above 18pt) WCAG AAA × Fail

Any Text WCAG AAA × Fail

Black Background



This preview shows how the Yxy color 45.5655, 0.3405, 0.3217 looks on a black background.

Color Contrast Check

Large Text (above 18pt) WCAG AA ✓ Pass

Any Text WCAG AA ✓ Pass

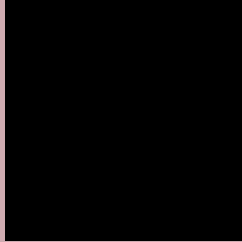
Large Text (above 18pt) WCAG AAA ✓ Pass

Any Text WCAG AAA ✓ Pass

If you want to check with other color combinations, try the [Color Contrast Checker](#).

Yxy 45.5655, 0.3405, 0.3217

Background



This preview shows how black text looks on a background with the Yxy color 45.5655, 0.3405, 0.3217.



This preview shows how white text looks on a background with the Yxy color 45.5655, 0.3405, 0.3217.

Color Blindness Simulation

Color vision deficiency is a very complex topic, and I could not describe the different causes any better than Wikipedia does, so if you want to learn more, you should check out their [article about color blindness](#).

Dichromacy



Original Color

45.5655, 0.3405, 0.3217

Protanopia

45.6849, 0.3138, 0.3251

Deuteranopia

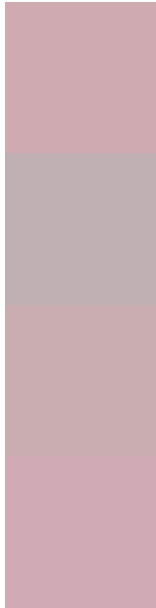
45.5488, 0.3335, 0.3265



Tritanopia

45.5782, 0.3362, 0.3132

Trichromacy



Original Color

45.5655, 0.3405, 0.3217

Protanomaly

45.5524, 0.3236, 0.3239

Deuteranomaly

45.5783, 0.3364, 0.3253

Tritanomaly

45.4955, 0.3380, 0.3156

Monochromacy



Original Color

45.5655, 0.3405, 0.3217

Achromatopsia

46.7784, 0.3127, 0.3290

Achromatomaly

46.2124, 0.3225, 0.3265

CSS Examples

Text

The CSS property to change the color of the text to Yxy 45.5655, 0.3405, 0.3217 is called "color". The color property can be set on classes, ids or directly on the HTML element.

This example shows how text in the color `rgb(207, 171, 177)` looks like.

```
.text, #text, p{  
    color:rgb(207, 171, 177)  
}
```

If you want to add a text shadow in that color use the text-shadow property, you can generate a text shadow directly with our [CSS Text Shadow Generator](#).

Here you see how black text with a 4 pixel rgb(207, 171, 177) colored shadow looks like.

```
.shadow{ text-shadow: 4px 4px 2px rgb(207, 171, 177) }
```

Border

The CSS property to change the border of an element to Yxy 45.5655, 0.3405, 0.3217 is called "border". The border property can be set on classes, ids or directly on the HTML element.

This example shows the color as border, it can be applied via the CSS property "border" or "border-color".

```
.border, #border, table{ border:4px solid rgb(207, 171, 177) }
```

If only the border color should be changed use the property `border-color`.

```
.border{ border-color:rgb(207, 171, 177) }
```

If you want to add a box shadow in that color use:

Here you see how a box with a 4 pixel `rgb(207, 171, 177)` colored shadow looks like.

```
.boxshadow{ -moz-box-shadow:4px 4px 4px  
4px rgb(207, 171, 177); -webkit-box-  
shadow:4px 4px 4px 4px rgb(207, 171, 177);  
box-shadow:4px 4px 4px 4px rgb(207, 171,  
177) }
```


Background

The CSS property to change the background color of an element to Yxy 45.5655, 0.3405, 0.3217 is called "background". The background property can be set on classes, ids or directly on the HTML element.

```
.background, #background, body{  
background: rgb(207, 171, 177) }
```

If only the background color should be changed can be used:

```
.background{ background-color: rgb(207,  
171, 177) }
```

This example shows the color as background, it is applied via the CSS property "background".

To optimize and compress your CSS code, you can use our [online CSS compressor and optimizer](#) based on csstidy. If you want to create a linear or radial gradient as background or border, check our [CSS Gradient Generator](#).

Hey! You found this booklet interesting? Support Converting Colors with the new Membership Option!

The pro membership hides all ads, plus gives you double the colors in the color bucket, and more awesome pro features!

[Learn more, Memberships starting at \\$2.50/m!](#)

**Follow me
on Twitter!**

@ConvertingColor