

Converting Colors

$Yxy(45.6957, 0.3489, 0.3248)$

Have a look what the booklet for
Yxy(45.6957, 0.3489, 0.3248)
contains.

Yxy(45.7636, 0.3490, 0.3255)	3
Conversions	4
Details	6
Harmonies	12
Previews	24
Color Blindness Simulation	27
CSS Examples	30

Color

Yxy(45.7636, 0.3490, 0.3255)

Conversions

Conversions Part 1

Format	Color
Hex	D4AAAD
RGB	212, 170, 173
RGB Percent	83%, 67%, 68%
CMY	0.1686, 0.3333, 0.3217
CMYK	0.00, 0.20, 0.18, 0.17
HSL	356°, 33%, 75%
HSV	356°, 20%, 83%
XYZ	49.0676, 45.7636, 45.7636
YIQ	182.9000, 24.0690, 9.8370

Conversions

Conversions Part 2

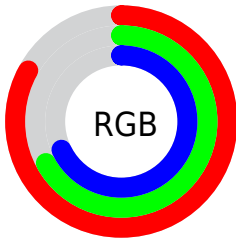
Format	Color
R _Y B	212, 170, 173
Decimal	13937325
CIE Lab	73.39, 15.79, 4.31
CIE LCh	73, 16.370, 15.267
Yxy	45.7636, 0.3490, 0.3255
Android (android.graphics.Color)	4292127405 (0xFFD4AAAD)
YUV	182.9000, -4.8807, 25.5207
Hunter-Lab	67.6488, 11.0857, 7.2452

Details

The Yxy color $45.7636, 0.3490, 0.3255$ is a light color, and the websafe version is hex $CC9999$. A complement of this color would be $60.2434, 0.2851, 0.3326$, and the grayscale version is $47.3139, 0.3127, 0.3290$.

A 20% lighter version of the original color is $80.7119, 0.3320, 0.3261$, and $21.5054, 0.3594, 0.3243$ is the 20% darker color. If you saturate the color by 10%, you get $37.7399, 0.3742, 0.3236$, and if you desaturate by 10%, it is $55.1857, 0.3287, 0.3273$.

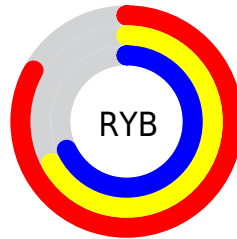
Distribution



Red (83%)

Green (67%)

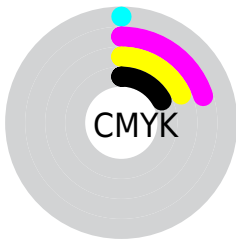
Blue (68%)



Red (83%)

Yellow (67%)

Blue (68%)

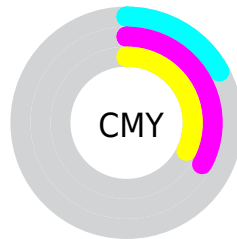


Cyan (0%)

Magenta (20%)

Yellow (18%)

Black (17%)



Cyan (17%)


Magenta (33%)

Yellow (32%)

Brightness & Saturation Gradients


These gradients show how the Yxy color 45.7636, 0.3490, 0.3255 changes by changing the brightness by 10 percent. The first figure shows a shift by +10% for each color and the second figure -10%.


Similar to the brightness gradients but the following saturation gradients show a change of the Yxy color 45.7636, 0.3490, 0.3255 by changing the saturation by 10% instead.


 45.7636, 0.3490,
0.3255

 45.7636, 0.3490,
0.3255


369.8574, 0.3307,
0.3275

 32.0593, 0.3536,
0.3250


 83.8651, 0.3423,
0.3263

 21.4068, 0.3596,
0.3242


109.0311, 0.3398,
0.3265

 13.4217, 0.3676,
0.3232

138.7864, 0.3377,
0.3268

 7.7196, 0.3788,
0.3216

173.5156, 0.3359,
0.3269

 3.9160, 0.3958,
0.3189

213.6028, 0.3343,
0.3271

 1.6267, 0.4244,
0.3139

259.4326, 0.3330,

 0.3755, 0.6059,

0.3272

0.3064

311.3894, 0.3318,
0.3274

0.0000, 0.0000,
0.0000

45.7636, 0.3490,
0.3255

45.7636, 0.3490,
0.3255

37.7399, 0.3742,
0.3236

55.1857, 0.3287,
0.3273

31.0423, 0.4053,
0.3218

66.0619, 0.3124,
0.3290

25.6010, 0.4426,
0.3203

78.4522, 0.2994,
0.3306

21.3378, 0.4856,
0.3194

92.4117, 0.2888,
0.3320

18.1654, 0.5317,
0.3194

92.7382, 0.2872,
0.3289

■ 15.9847, 0.5758,
0.3208

■ 14.6783, 0.6112,
0.3235

■ 14.0422, 0.6332,
0.3264

■ 14.0325, 0.6336,
0.3264

Harmonies

Analogous

The Analogous color harmony consists of three colors that are next to each other on the color wheel.



45.7636, 0.3298, 0.3075



45.7636, 0.3490, 0.3255



45.7636, 0.3582, 0.3450

Triad

The Triadic color harmony groups three colors that are evenly spaced from another and form a triangle on the color wheel.



45.7636, 0.3490, 0.3255



45.7636, 0.3176, 0.3664



45.7636, 0.2722, 0.2959

Complementary

The Complementary color scheme is a pair of colors which are on the opposite of each other on the color wheel.



45.7636, 0.3490, 0.3255



60.2434, 0.2851, 0.3326

Split Complementary

Split-complementary colors differ from the complementary color scheme. The scheme consists of three colors, the original color and two neighbors of the complement color.



45.7636, 0.2693, 0.3104



45.7636, 0.3490, 0.3255



45.7636, 0.2950, 0.3520

Square

The Square scheme is like the rectangle color scheme, but the four colors are evenly spaced on the color wheel.



45.7636, 0.3490, 0.3255



45.7636, 0.3396, 0.3695



45.7636, 0.2775, 0.3310



45.7636, 0.2855, 0.2906

Rectangle

The Rectangle color scheme consists of four colors that form a rectangle on the color wheel.



45.7636, 0.3490, 0.3255



45.7636, 0.3572, 0.3565



45.7636, 0.2775, 0.3310



45.7636, 0.2700, 0.2998

Sweetspot

The Sweet Spot groups the original color and five complimentary colors.



45.7657, 0.3490, 0.3255



89.7413, 0.3222, 0.3280



46.9892, 0.3120, 0.2797



18.9800, 0.3233, 0.3279



0.0000, 0.0000, 0.0000



21.4041, 0.3127, 0.3290

Same Dimension

The Same Dimension uses a secret algorithm to generate beautiful new colors.



45.7657, 0.3490, 0.3255



63.8369, 0.3595, 0.3247



52.6568, 0.3477, 0.3501



12.4349, 0.3280, 0.3274



8.6677, 0.6319, 0.3255



0.5279, 0.6078, 0.3122

Inverse Universe

The Inverse Universe completely reimagines the original color for something new.



45.7657, 0.3490, 0.3255



63.8369, 0.3595, 0.3247



52.1102, 0.2819, 0.3069



12.4349, 0.3280, 0.3274



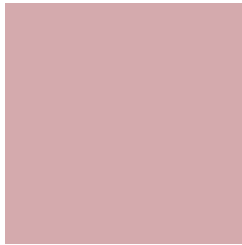
8.6677, 0.6319, 0.3255



0.5279, 0.6078, 0.3122

Previews

White Background



This preview shows how the Yxy color 45.7636, 0.3490, 0.3255 looks on a white background.

Color Contrast Check

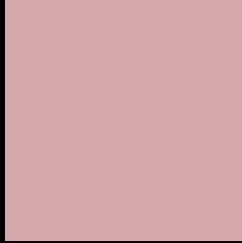
Large Text (above 18pt) WCAG AA × Fail

Any Text WCAG AA × Fail

Large Text (above 18pt) WCAG AAA × Fail

Any Text WCAG AAA × Fail

Black Background



This preview shows how the Yxy color 45.7636, 0.3490, 0.3255 looks on a black background.

Color Contrast Check

Large Text (above 18pt) WCAG AA ✓ Pass

Any Text WCAG AA ✓ Pass

Large Text (above 18pt) WCAG AAA ✓ Pass

Any Text WCAG AAA ✓ Pass

If you want to check with other color combinations, try the [Color Contrast Checker](#).

Yxy 45.7636, 0.3490, 0.3255

Background



This preview shows how black text looks on a background with the Yxy color 45.7636, 0.3490, 0.3255.



This preview shows how white text looks on a background with the Yxy color 45.7636, 0.3490, 0.3255.

Color Blindness Simulation

Color vision deficiency is a very complex topic, and I could not describe the different causes any better than Wikipedia does, so if you want to learn more, you should check out their [article about color blindness](#).

Dichromacy



Original Color

45.7636, 0.3490, 0.3255

Protanopia

46.0472, 0.3178, 0.3316

Deuteranopia

45.6682, 0.3389, 0.3316



Tritanopia

45.8995, 0.3419, 0.3134

Trichromacy



Original Color

45.7636, 0.3490, 0.3255

Protanomaly

45.6546, 0.3287, 0.3290

Deuteranomaly

45.8448, 0.3427, 0.3303

Tritanomaly

45.7767, 0.3446, 0.3170

Monochromacy



Original Color

45.7636, 0.3490, 0.3255

Achromatopsia

47.3531, 0.3127, 0.3290

Achromatomaly

46.5648, 0.3259, 0.3278

CSS Examples

Text

The CSS property to change the color of the text to Yxy 45.7636, 0.3490, 0.3255 is called "color". The color property can be set on classes, ids or directly on the HTML element.

This example shows how text in the color `rgb(212, 170, 173)` looks like.

```
.text, #text, p{  
    color:rgb(212, 170, 173)  
}
```

If you want to add a text shadow in that color use the text-shadow property, you can generate a text shadow directly with our [CSS Text Shadow Generator](#).

Here you see how black text with a 4 pixel rgb(212, 170, 173) colored shadow looks like.

```
.shadow{ text-shadow: 4px 4px 2px rgb(212, 170, 173) }
```

Border

The CSS property to change the border of an element to Yxy 45.7636, 0.3490, 0.3255 is called "border". The border property can be set on classes, ids or directly on the HTML element.

This example shows the color as border, it can be applied via the CSS property "border" or "border-color".

```
.border, #border, table{ border:4px solid rgb(212, 170, 173) }
```

If only the border color should be changed use the property `border-color`.

```
.border{ border-color:rgb(212, 170, 173) }
```

If you want to add a box shadow in that color use:

Here you see how a box with a 4 pixel `rgb(212, 170, 173)` colored shadow looks like.

```
.boxshadow{ -moz-box-shadow:4px 4px 4px  
4px rgb(212, 170, 173); -webkit-box-  
shadow:4px 4px 4px 4px rgb(212, 170, 173);  
box-shadow:4px 4px 4px 4px rgb(212, 170,  
173) }
```


Background

The CSS property to change the background color of an element to Yxy 45.7636, 0.3490, 0.3255 is called "background". The background property can be set on classes, ids or directly on the HTML element.

```
.background, #background, body{  
background: rgb(212, 170, 173) }
```

If only the background color should be changed can be used:

```
.background{ background-color: rgb(212,  
170, 173) }
```

This example shows the color as background, it is applied via the CSS property "background".

To optimize and compress your CSS code, you can use our [online CSS compressor and optimizer](#) based on csstidy. If you want to create a linear or radial gradient as background or border, check our [CSS Gradient Generator](#).

Hey! You found this booklet interesting? Support Converting Colors with the new Membership Option!

The pro membership hides all ads, plus gives you double the colors in the color bucket, and more awesome pro features!

[Learn more, Memberships starting at \\$2.50/m!](#)

**Follow me
on Twitter!**

@ConvertingColor