

Converting Colors

$Yxy(46.1601, 0.3505, 0.3312)$

Have a look what the booklet for
Yxy(46.1601, 0.3505, 0.3312)
contains.

Yxy(46.2562, 0.3503, 0.3316)	3
<i>Conversions</i>	4
<i>Details</i>	6
<i>Harmonies</i>	12
<i>Previews</i>	24
<i>Color Blindness Simulation</i>	27
<i>CSS Examples</i>	30

Color

Yxy(46.2562, 0.3503, 0.3316)

Conversions

Conversions Part 1

Format	Color
Hex	D3ACAA
RGB	211, 172, 170
RGB Percent	83%, 67%, 67%
CMY	0.1727, 0.3254, 0.3334
CMYK	0.00, 0.18, 0.19, 0.17
HSL	3°, 32%, 75%
HSV	3°, 19%, 83%
XYZ	48.8647, 46.2562, 44.3730
YIQ	183.4330, 23.8860, 7.6460

Conversions

Conversions Part 2

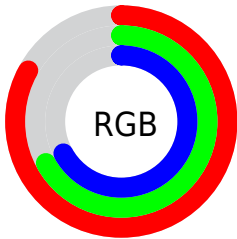
Format	Color
R _Y B	211, 172, 170
Decimal	13872298
CIE Lab	73.71, 13.86, 6.39
CIE LCh	74, 15.266, 24.765
Yxy	46.2562, 0.3503, 0.3316
Android (android.graphics.Color)	4292062378 (0xFFD3ACAA)
YUV	183.4330, -6.6225, 24.1763
Hunter-Lab	68.0119, 9.2266, 8.9257

Details

The Yxy color $46.2562, 0.3503, 0.3316$ is a light color, and the websafe version is hex $CC9999$. A complement of this color would be $58.8151, 0.2836, 0.3264$, and the grayscale version is $47.6307, 0.3127, 0.3290$.

A 20% lighter version of the original color is $81.6344, 0.3338, 0.3311$, and $21.8089, 0.3612, 0.3324$ is the 20% darker color. If you saturate the color by 10%, you get $38.4575, 0.3767, 0.3331$, and if you desaturate by 10%, it is $55.3385, 0.3290, 0.3302$.

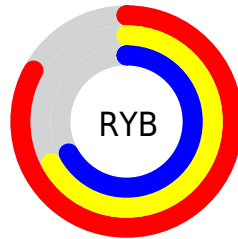
Distribution



Red (83%)

Green (67%)

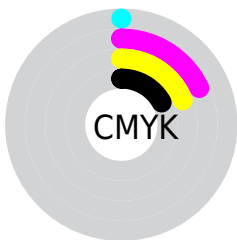
Blue (67%)



Red (83%)

Yellow (67%)

Blue (67%)

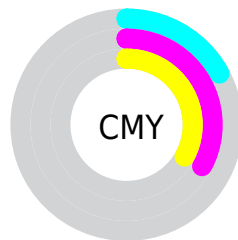


Cyan (0%)

Magenta (18%)

Yellow (19%)

Black (17%)



Cyan (17%)


Magenta (33%)

Yellow (33%)

Brightness & Saturation Gradients


These gradients show how the Yxy color 46.2562, 0.3503, 0.3316 changes by changing the brightness by 10 percent. The first figure shows a shift by +10% for each color and the second figure -10%.


Similar to the brightness gradients but the following saturation gradients show a change of the Yxy color 46.2562, 0.3503, 0.3316 by changing the saturation by 10% instead.


 46.2562, 0.3503,
0.3316

 46.2562, 0.3503,
0.3316


371.8377, 0.3314,
0.3306

 32.4480, 0.3551,
0.3318


 84.6023, 0.3434,
0.3313

 21.7039, 0.3612,
0.3320


109.9090, 0.3408,
0.3311

 13.6395, 0.3695,
0.3321


139.8174, 0.3386,
0.3310

 7.8704, 0.3811,
0.3322

174.7118, 0.3367,
0.3309

 4.0121, 0.3986,
0.3320

214.9766, 0.3351,
0.3308

 1.6803, 0.4279,
0.3307

260.9963, 0.3337,

 0.4109, 0.6393,

0.3307

0.3604

313.1552, 0.3325,
0.3306

0.0000, 0.0000,
0.0000

46.2562, 0.3503,
0.3316

46.2562, 0.3503,
0.3316

38.4575, 0.3767,
0.3331

55.3385, 0.3290,
0.3302

31.8786, 0.4090,
0.3345

65.7520, 0.3118,
0.3289

26.4598, 0.4476,
0.3358

77.5496, 0.2980,
0.3278

22.1337, 0.4917,
0.3366

90.7794, 0.2868,
0.3267

18.8262, 0.5385,
0.3368

92.5849, 0.2866,
0.3289

■ 16.4537, 0.5824,
0.3360

■ 14.9196, 0.6164,
0.3343

■ 14.1015, 0.6362,
0.3324

■ 14.0725, 0.6370,
0.3324

Harmonies

Analogous

The Analogous color harmony consists of three colors that are next to each other on the color wheel.



46.2562, 0.3350, 0.3139



46.2562, 0.3503, 0.3316



46.2562, 0.3552, 0.3493

Triad

The Triadic color harmony groups three colors that are evenly spaced from another and form a triangle on the color wheel.



46.2562, 0.3503, 0.3316



46.2562, 0.3105, 0.3604



46.2562, 0.2780, 0.2956

Complementary

The Complementary color scheme is a pair of colors which are on the opposite of each other on the color wheel.



46.2562, 0.3503, 0.3316



58.8151, 0.2836, 0.3264

Split Complementary

Split-complementary colors differ from the complementary color scheme. The scheme consists of three colors, the original color and two neighbors of the complement color.



46.2562, 0.2720, 0.3067



46.2562, 0.3503, 0.3316



46.2562, 0.2904, 0.3445

Square

The Square scheme is like the rectangle color scheme, but the four colors are evenly spaced on the color wheel.



46.2562, 0.3503, 0.3316



46.2562, 0.3317, 0.3669



46.2562, 0.2765, 0.3245



46.2562, 0.2930, 0.2935

Rectangle

The Rectangle color scheme consists of four colors that form a rectangle on the color wheel.



46.2562, 0.3503, 0.3316



46.2562, 0.3518, 0.3588



46.2562, 0.2765, 0.3245



46.2562, 0.2748, 0.2984

Sweetspot

The Sweet Spot groups the original color and five complimentary colors.



46.2583, 0.3503, 0.3316



90.1250, 0.3228, 0.3298



47.2207, 0.3161, 0.2826



19.0703, 0.3240, 0.3299



0.0000, 0.0000, 0.0000



21.4041, 0.3127, 0.3290

Same Dimension

The Same Dimension uses a secret algorithm to generate beautiful new colors.



46.2583, 0.3503, 0.3316



66.2301, 0.3597, 0.3322



54.3769, 0.3459, 0.3553



11.9011, 0.3289, 0.3302



8.5394, 0.6361, 0.3332



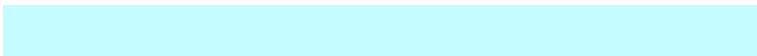
0.5113, 0.6233, 0.3433

Inverse Universe

The Inverse Universe completely reimagines the original color for something new.



58.8151, 0.2836, 0.3264



88.6773, 0.2783, 0.3258



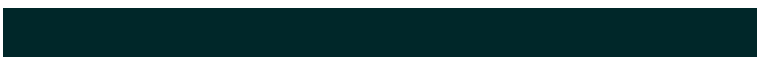
49.6884, 0.2821, 0.3012



13.3022, 0.2983, 0.3278



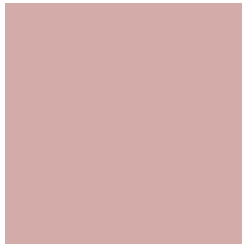
27.9580, 0.2204, 0.3135



1.5948, 0.2213, 0.3165

Previews

White Background



This preview shows how the Yxy color 46.2562, 0.3503, 0.3316 looks on a white background.

Color Contrast Check

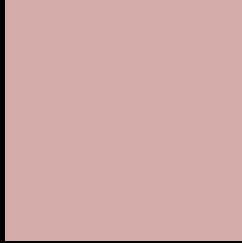
Large Text (above 18pt) WCAG AA × Fail

Any Text WCAG AA × Fail

Large Text (above 18pt) WCAG AAA × Fail

Any Text WCAG AAA × Fail

Black Background



This preview shows how the Yxy color 46.2562, 0.3503, 0.3316 looks on a black background.

Color Contrast Check

Large Text (above 18pt) WCAG AA ✓ Pass

Any Text WCAG AA ✓ Pass

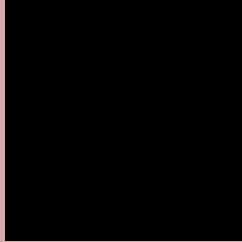
Large Text (above 18pt) WCAG AAA ✓ Pass

Any Text WCAG AAA ✓ Pass

If you want to check with other color combinations, try the [Color Contrast Checker](#).

Yxy 46.2562, 0.3503, 0.3316

Background



This preview shows how black text looks on a background with the Yxy color 46.2562, 0.3503, 0.3316.



This preview shows how white text looks on a background with the Yxy color 46.2562, 0.3503, 0.3316.

Color Blindness Simulation

Color vision deficiency is a very complex topic, and I could not describe the different causes any better than Wikipedia does, so if you want to learn more, you should check out their [article about color blindness](#).

Dichromacy



Original Color

46.2562, 0.3503, 0.3316

Protanopia

46.5820, 0.3219, 0.3368

Deuteranopia

46.2210, 0.3432, 0.3366



Tritanopia

46.3145, 0.3408, 0.3134

Trichromacy



Original Color

46.2562, 0.3503, 0.3316

Protanomaly

46.4600, 0.3319, 0.3354

Deuteranomaly

46.2585, 0.3461, 0.3353

Tritanomaly

46.3372, 0.3442, 0.3206

Monochromacy



Original Color

46.2562, 0.3503, 0.3316

Achromatopsia

47.3531, 0.3127, 0.3290

Achromatomaly

46.7920, 0.3258, 0.3303

CSS Examples

Text

The CSS property to change the color of the text to Yxy 46.2562, 0.3503, 0.3316 is called "color". The color property can be set on classes, ids or directly on the HTML element.

This example shows how text in the color `rgb(211, 172, 170)` looks like.

```
.text, #text, p{  
    color:rgb(211, 172, 170)  
}
```

If you want to add a text shadow in that color use the text-shadow property, you can generate a text shadow directly with our [CSS Text Shadow Generator](#).

Here you see how black text with a 4 pixel rgb(211, 172, 170) colored shadow looks like.

```
.shadow{ text-shadow: 4px 4px 2px rgb(211, 172, 170) }
```

Border

The CSS property to change the border of an element to Yxy 46.2562, 0.3503, 0.3316 is called "border". The border property can be set on classes, ids or directly on the HTML element.

This example shows the color as border, it can be applied via the CSS property "border" or "border-color".

```
.border, #border, table{ border:4px solid rgb(211, 172, 170) }
```

If only the border color should be changed use the property `border-color`.

```
.border{ border-color:rgb(211, 172, 170) }
```

If you want to add a box shadow in that color use:

Here you see how a box with a 4 pixel `rgb(211, 172, 170)` colored shadow looks like.

```
.boxshadow{ -moz-box-shadow:4px 4px 4px  
4px rgb(211, 172, 170); -webkit-box-  
shadow:4px 4px 4px 4px rgb(211, 172, 170);  
box-shadow:4px 4px 4px 4px rgb(211, 172,  
170) }
```


Background

The CSS property to change the background color of an element to Yxy 46.2562, 0.3503, 0.3316 is called "background". The background property can be set on classes, ids or directly on the HTML element.

```
.background, #background, body{  
background: rgb(211, 172, 170) }
```

If only the background color should be changed can be used:

```
.background{ background-color: rgb(211,  
172, 170) }
```

This example shows the color as background, it is applied via the CSS property "background".

To optimize and compress your CSS code, you can use our [online CSS compressor and optimizer](#) based on csstidy. If you want to create a linear or radial gradient as background or border, check our [CSS Gradient Generator](#).

Hey! You found this booklet interesting? Support Converting Colors with the new Membership Option!

The pro membership hides all ads, plus gives you double the colors in the color bucket, and more awesome pro features!

[Learn more, Memberships starting at \\$2.50/m!](#)

**Follow me
on Twitter!**

@ConvertingColor