

Converting Colors

Yxy(46.5082, 0.3432, 0.3413)

Have a look what the booklet for
Yxy(46.5082, 0.3432, 0.3413)
contains.

Yxy(46.6518, 0.3427, 0.3417)	3
Conversions	4
Details	6
Harmonies	12
Previews	24
Color Blindness Simulation	27
CSS Examples	30

Color

Yxy(46.6518, 0.3427, 0.3417)

Conversions

Conversions Part 1

Format	Color
Hex	C9B1A7
RGB	201, 177, 167
RGB Percent	79%, 69%, 65%
CMY	0.2117, 0.3059, 0.3452
CMYK	0.00, 0.12, 0.17, 0.21
HSL	18°, 24%, 72%
HSV	18°, 17%, 79%
XYZ	46.7883, 46.6518, 43.0884
YIQ	183.0360, 17.5140, 1.9780

Conversions

Conversions Part 2

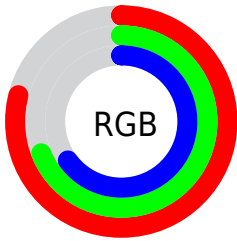
Format	Color
R_{YB}	201, 181, 167
Decimal	13218215
CIE Lab	73.97, 7.01, 8.28
CIE LCh	74, 10.846, 49.760
Yxy	46.6518, 0.3427, 0.3417
Android (android.graphics.Color)	4291408295 (0xFFC9B1A7)
YUV	183.0360, -7.9057, 15.7544
Hunter-Lab	68.3021, 2.7474, 10.4084

Details

The Yxy color **46.6518, 0.3427, 0.3417** is a light color, and the websafe version is hex **CC9999**. A complement of this color would be **49.6981, 0.2868, 0.3159**, and the grayscale version is **47.4135, 0.3127, 0.3290**.

A 20% lighter version of the original color is **84.8118, 0.3350, 0.3400**, and **21.8562, 0.3520, 0.3445** is the 20% darker color. If you saturate the color by 10%, you get **40.6506, 0.3649, 0.3497**, and if you desaturate by 10%, it is **53.3555, 0.3239, 0.3340**.

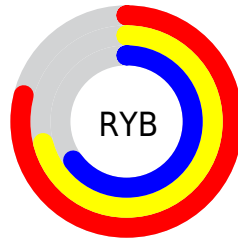
Distribution



Red (79%)

Green (69%)

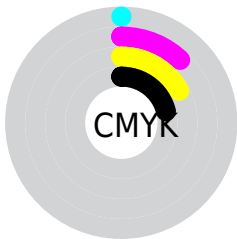
Blue (65%)



Red (79%)

Yellow (71%)

Blue (65%)

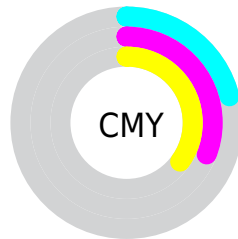


Cyan (0%)

Magenta (12%)

Yellow (17%)

Black (21%)



Cyan (21%)


Magenta (31%)


Yellow (35%)

Brightness & Saturation Gradients


These gradients show how the Yxy color 46.6518, 0.3427, 0.3417 changes by changing the brightness by 10 percent. The first figure shows a shift by +10% for each color and the second figure -10%.


Similar to the brightness gradients but the following saturation gradients show a change of the Yxy color 46.6518, 0.3427, 0.3417 by changing the saturation by 10% instead.


 46.6518, 0.3427,
0.3417


 46.6518, 0.3427,
0.3417


373.4229, 0.3276,
0.3355

 32.7605, 0.3465,
0.3432


 85.1936, 0.3372,
0.3395

 21.9430, 0.3514,
0.3451


 110.6129, 0.3351,
0.3387

 13.8150, 0.3579,
0.3475


140.6437, 0.3334,
0.3379

 7.9921, 0.3671,
0.3508

175.6703, 0.3319,
0.3373

 4.0899, 0.3808,
0.3555

216.0771, 0.3306,
0.3368

 1.7240, 0.4037,
0.3625

262.2486, 0.3295,

 0.4391, 0.5726,

0.3363

0.4274

314.5690, 0.3285,
0.3359

0.0000, 0.0000,
0.0000

46.6518, 0.3427,
0.3417

46.6518, 0.3427,
0.3417

40.6506, 0.3649,
0.3497

53.3555, 0.3239,
0.3340

35.3227, 0.3910,
0.3579

60.7775, 0.3082,
0.3269

30.6457, 0.4213,
0.3655

68.9407, 0.2949,
0.3203

26.5939, 0.4553,
0.3720

77.8653, 0.2837,
0.3142

23.1395, 0.4920,
0.3763

86.7393, 0.2806,
0.3215

■ 20.2525, 0.5291,
0.3772

■ 91.1612, 0.2811,
0.3289

■ 17.9001, 0.5632,
0.3736

■ 16.0442, 0.5909,
0.3656

■ 15.5637, 0.5985,
0.3630

Harmonies

Analogous

The Analogous color harmony consists of three colors that are next to each other on the color wheel.



46.6518, 0.3379, 0.3288



46.6518, 0.3427, 0.3417



46.6518, 0.3392, 0.3516

Triad

The Triadic color harmony groups three colors that are evenly spaced from another and form a triangle on the color wheel.



46.6518, 0.3427, 0.3417



46.6518, 0.2991, 0.3421



46.6518, 0.2966, 0.3034

Complementary

The Complementary color scheme is a pair of colors which are on the opposite of each other on the color wheel.



46.6518, 0.3427, 0.3417



49.6981, 0.2868, 0.3159

Split Complementary

Split-complementary colors differ from the complementary color scheme. The scheme consists of three colors, the original color and two neighbors of the complement color.



46.6518, 0.2867, 0.3062



46.6518, 0.3427, 0.3417



46.6518, 0.2881, 0.3284

Square

The Square scheme is like the rectangle color scheme, but the four colors are evenly spaced on the color wheel.



46.6518, 0.3427, 0.3417



46.6518, 0.3138, 0.3523



46.6518, 0.2836, 0.3152



46.6518, 0.3110, 0.3071

Rectangle

The Rectangle color scheme consists of four colors that form a rectangle on the color wheel.



46.6518, 0.3427, 0.3417



46.6518, 0.3328, 0.3551



46.6518, 0.2836, 0.3152



46.6518, 0.2927, 0.3036

Sweetspot

The Sweet Spot groups the original color and five complimentary colors.



46.6539, 0.3427, 0.3417



93.5980, 0.3208, 0.3327



43.8303, 0.3229, 0.2989



19.8467, 0.3220, 0.3332



0.0000, 0.0000, 0.0000



21.4041, 0.3127, 0.3290

Same Dimension

The Same Dimension uses a secret algorithm to generate beautiful new colors.



46.6539, 0.3427, 0.3417



76.2848, 0.3497, 0.3444



53.6386, 0.3393, 0.3620



11.1370, 0.3282, 0.3359



9.9226, 0.5960, 0.3650



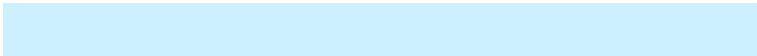
0.5978, 0.5539, 0.3984

Inverse Universe

The Inverse Universe completely reimagines the original color for something new.



49.6981, 0.2868, 0.3159



82.3752, 0.2817, 0.3131



42.8425, 0.2858, 0.2937



11.5201, 0.2984, 0.3220



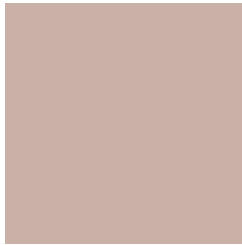
14.9557, 0.1976, 0.2312



0.8293, 0.2039, 0.2540

Previews

White Background



This preview shows how the Yxy color 46.6518, 0.3427, 0.3417 looks on a white background.

Color Contrast Check

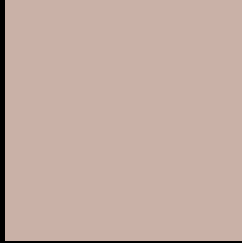
Large Text (above 18pt) WCAG AA × Fail

Any Text WCAG AA × Fail

Large Text (above 18pt) WCAG AAA × Fail

Any Text WCAG AAA × Fail

Black Background



This preview shows how the Yxy color 46.6518, 0.3427, 0.3417 looks on a black background.

Color Contrast Check

Large Text (above 18pt) WCAG AA ✓ Pass

Any Text WCAG AA ✓ Pass

Large Text (above 18pt) WCAG AAA ✓ Pass

Any Text WCAG AAA ✓ Pass

If you want to check with other color combinations, try the [Color Contrast Checker](#).

Yxy 46.6518, 0.3427, 0.3417

Background



This preview shows how black text looks on a background with the Yxy color 46.6518, 0.3427, 0.3417.



This preview shows how white text looks on a background with the Yxy color 46.6518, 0.3427, 0.3417.

Color Blindness Simulation

Color vision deficiency is a very complex topic, and I could not describe the different causes any better than Wikipedia does, so if you want to learn more, you should check out their [article about color blindness](#).

Dichromacy



Original Color

46.6518, 0.3427, 0.3417

Protanopia

46.6037, 0.3285, 0.3447

Deuteranopia

46.8198, 0.3465, 0.3403



Tritanopia

46.7403, 0.3277, 0.3119

Trichromacy



Original Color

46.6518, 0.3427, 0.3417

Protanomaly

46.8071, 0.3340, 0.3445

Deuteranomaly

46.6781, 0.3456, 0.3403

Tritanomaly

46.6517, 0.3336, 0.3229

Monochromacy



Original Color

46.6518, 0.3427, 0.3417

Achromatopsia

47.3531, 0.3127, 0.3290

Achromatomaly

47.1692, 0.3237, 0.3342

CSS Examples

Text

The CSS property to change the color of the text to Yxy 46.6518, 0.3427, 0.3417 is called "color". The color property can be set on classes, ids or directly on the HTML element.

This example shows how text in the color `rgb(201, 177, 167)` looks like.

```
.text, #text, p{  
    color:rgb(201, 177, 167)  
}
```

If you want to add a text shadow in that color use the text-shadow property, you can generate a text shadow directly with our [CSS Text Shadow Generator](#).

Here you see how black text with a 4 pixel rgb(201, 177, 167) colored shadow looks like.

```
.shadow{ text-shadow: 4px 4px 2px rgb(201, 177, 167) }
```

Border

The CSS property to change the border of an element to Yxy 46.6518, 0.3427, 0.3417 is called "border". The border property can be set on classes, ids or directly on the HTML element.

This example shows the color as border, it can be applied via the CSS property "border" or "border-color".

```
.border, #border, table{ border:4px solid rgb(201, 177, 167) }
```

If only the border color should be changed use the property `border-color`.

```
.border{ border-color:rgb(201, 177, 167) }
```

If you want to add a box shadow in that color use:

Here you see how a box with a 4 pixel `rgb(201, 177, 167)` colored shadow looks like.

```
.boxshadow{ -moz-box-shadow:4px 4px 4px  
4px rgb(201, 177, 167); -webkit-box-  
shadow:4px 4px 4px 4px rgb(201, 177, 167);  
box-shadow:4px 4px 4px 4px rgb(201, 177,  
167) }
```


Background

The CSS property to change the background color of an element to Yxy 46.6518, 0.3427, 0.3417 is called "background". The background property can be set on classes, ids or directly on the HTML element.

```
.background, #background, body{  
background: rgb(201, 177, 167) }
```

If only the background color should be changed can be used:

```
.background{ background-color: rgb(201,  
177, 167) }
```

This example shows the color as background, it is applied via the CSS property "background".

To optimize and compress your CSS code, you can use our [online CSS compressor and optimizer](#) based on csstidy. If you want to create a linear or radial gradient as background or border, check our [CSS Gradient Generator](#).

Hey! You found this booklet interesting? Support Converting Colors with the new Membership Option!

The pro membership hides all ads, plus gives you double the colors in the color bucket, and more awesome pro features!

[Learn more, Memberships starting at \\$2.50/m!](#)

**Follow me
on Twitter!**

@ConvertingColor