

# Converting Colors

$Y_{xy}(46.5175, 0.3370, 0.3293)$

Have a look what the booklet for  
Yxy(46.5175, 0.3370, 0.3293)  
contains.

<b>Yxy(46.3116, 0.3370, 0.3291)</b> .....	3
<b>Conversions</b> .....	4
<b>Details</b> .....	6
<b>Harmonies</b> .....	12
<b>Previews</b> .....	24
<b>Color Blindness Simulation</b> .....	27
<b>CSS Examples</b> .....	30

# Color

**Yxy(46.3116, 0.3370, 0.3291)**

# Conversions

## Conversions Part 1

Format	Color
Hex	CAAFAF
RGB	202, 175, 175
RGB Percent	79%, 69%, 69%
CMY	0.2078, 0.3137, 0.3138
CMYK	0.00, 0.13, 0.13, 0.21
HSL	0°, 20%, 74%
HSV	0°, 13%, 79%
XYZ	47.4233, 46.3116, 46.9871
YIQ	183.0730, 16.0920, 5.7240

# Conversions

## Conversions Part 2

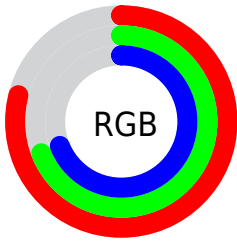
Format	Color
R <sub>Y</sub> B	202, 175, 175
Decimal	13283247
CIE Lab	73.75, 9.73, 3.60
CIE LCh	74, 10.374, 20.306
Yxy	46.3116, 0.3370, 0.3291
Android (android.graphics.Color)	4291473327 (0xFFCAAFAF)
YUV	183.0730, -3.9800, 16.5990
Hunter-Lab	68.0526, 5.2978, 6.6999

# Details

The Yxy color  $46.3116, 0.3370, 0.3291$  is a light color, and the websafe version is hex  $CC9999$ . A complement of this color would be  $55.6056, 0.2925, 0.3289$ , and the grayscale version is  $47.4121, 0.3127, 0.3290$ .

A 20% lighter version of the original color is  $84.1250, 0.3299, 0.3300$ , and  $21.8919, 0.3438, 0.3291$  is the 20% darker color. If you saturate the color by 10%, you get  $38.3005, 0.3605, 0.3292$ , and if you desaturate by 10%, it is  $55.6196, 0.3182, 0.3290$ .

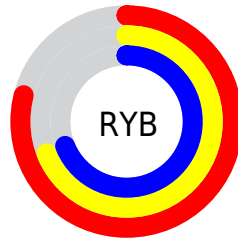
# Distribution



Red (79%)

Green (69%)

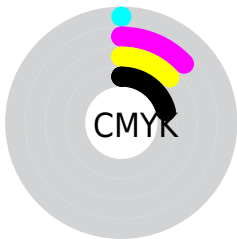
Blue (69%)



Red (79%)

Yellow (69%)

Blue (69%)

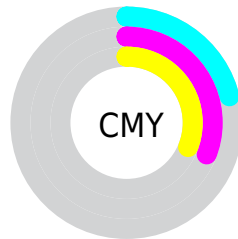


Cyan (0%)

Magenta (13%)

Yellow (13%)

Black (21%)



Cyan (21%)

Magenta (31%)


Yellow (31%)


# Brightness & Saturation Gradients

These gradients show how the Yxy color 46.3116, 0.3370, 0.3291 changes by changing the brightness by 10 percent. The first figure shows a shift by +10% for each color and the second figure -10%.


Similar to the brightness gradients but the following saturation gradients show a change of the Yxy color 46.3116, 0.3370, 0.3291 by changing the saturation by 10% instead.




 46.3116, 0.3370,  
0.3291

 46.3116, 0.3370,  
0.3291

372.0600, 0.3248,  
0.3292

 32.4918, 0.3401,  
0.3291


 84.6851, 0.3325,  
0.3291

 21.7374, 0.3440,  
0.3290


110.0077, 0.3309,  
0.3292

 13.6641, 0.3493,  
0.3288


139.9332, 0.3295,  
0.3292

 7.8874, 0.3568,  
0.3286

174.8461, 0.3283,  
0.3292

 4.0230, 0.3681,  
0.3281

215.1309, 0.3272,  
0.3292

 1.6864, 0.3870,  
0.3269

261.1719, 0.3263,

 0.4148, 0.5068,

0.3292

0.3328

313.3534, 0.3255,  
0.3292

0.0000, 0.0000,  
0.0000

46.3116, 0.3370,  
0.3291

46.3116, 0.3370,  
0.3291

38.3005, 0.3605,  
0.3292

55.6196, 0.3182,  
0.3290

31.5229, 0.3898,  
0.3293

66.2719, 0.3031,  
0.3290

25.9195, 0.4256,  
0.3294

78.3211, 0.2910,  
0.3289

21.4236, 0.4679,  
0.3296

91.2966, 0.2816,  
0.3289

17.9617, 0.5149,  
0.3297

■ 15.4517, 0.5622,  
0.3299

■ 13.7988, 0.6027,  
0.3300

■ 12.8889, 0.6294,  
0.3300

■ 12.5606, 0.6400,  
0.3300

# Harmonies

## Analogous

The Analogous color harmony consists of three colors that are next to each other on the color wheel.



46.3116, 0.3259, 0.3171



46.3116, 0.3370, 0.3291



46.3116, 0.3415, 0.3414

# Triad

The Triadic color harmony groups three colors that are evenly spaced from another and form a triangle on the color wheel.



46.3116, 0.3370, 0.3291



46.3116, 0.3135, 0.3512



46.3116, 0.2879, 0.3070

# Complementary

The Complementary color scheme is a pair of colors which are on the opposite of each other on the color wheel.



46.3116, 0.3370, 0.3291



55.6056, 0.2925, 0.3289

# Split Complementary

Split-complementary colors differ from the complementary color scheme. The scheme consists of three colors, the original color and two neighbors of the complement color.



46.3116, 0.2848, 0.3156



46.3116, 0.3370, 0.3291



46.3116, 0.2994, 0.3414

# Square

The Square scheme is like the rectangle color scheme, but the four colors are evenly spaced on the color wheel.



46.3116, 0.3370, 0.3291



46.3116, 0.3277, 0.3546



46.3116, 0.2890, 0.3282



46.3116, 0.2975, 0.3044



# Rectangle

The Rectangle color scheme consists of four colors that form a rectangle on the color wheel.



46.3116, 0.3370, 0.3291



46.3116, 0.3400, 0.3482



46.3116, 0.2890, 0.3282



46.3116, 0.2861, 0.3093

# Sweetspot

The Sweet Spot groups the original color and five complimentary colors.



46.3137, 0.3370, 0.3291



93.0299, 0.3193, 0.3290



47.4738, 0.3142, 0.2963



19.6406, 0.3206, 0.3290



0.0000, 0.0000, 0.0000



21.4041, 0.3127, 0.3290



# Same Dimension

The Same Dimension uses a secret algorithm to generate beautiful new colors.



46.3137, 0.3370, 0.3291



74.3388, 0.3432, 0.3291



51.8276, 0.3347, 0.3457



11.2153, 0.3290, 0.3291



8.0833, 0.6400, 0.3300



0.4176, 0.6397, 0.3302

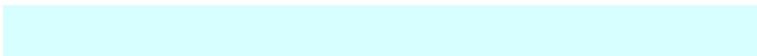


# Inverse Universe

The Inverse Universe completely reimagines the original color for something new.



55.6056, 0.2925, 0.3289



93.0422, 0.2884, 0.3289



49.5528, 0.2920, 0.3117



12.7252, 0.2984, 0.3289



29.8701, 0.2246, 0.3285

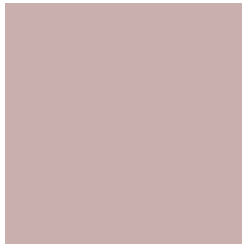


1.5416, 0.2246, 0.3285



# Previews

## White Background



This preview shows how the Yxy color 46.3116, 0.3370, 0.3291 looks on a white background.

## Color Contrast Check

Large Text (above 18pt) WCAG AA × Fail

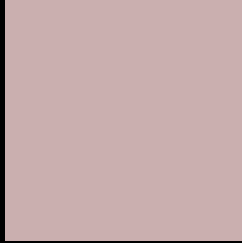
Any Text WCAG AA × Fail

Large Text (above 18pt) WCAG AAA × Fail

Any Text WCAG AAA × Fail



# Black Background



This preview shows how the Yxy color 46.3116, 0.3370, 0.3291 looks on a black background.

## Color Contrast Check

Large Text (above 18pt) WCAG AA ✓ Pass

Any Text WCAG AA ✓ Pass

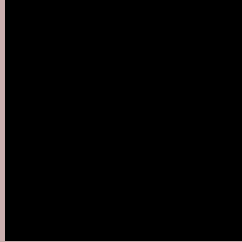
Large Text (above 18pt) WCAG AAA ✓ Pass

Any Text WCAG AAA ✓ Pass

If you want to check with other color combinations, try the [Color Contrast Checker](#).

**Yxy 46.3116, 0.3370, 0.3291**

## Background



This preview shows how black text looks on a background with the Yxy color 46.3116, 0.3370, 0.3291.



This preview shows how white text looks on a background with the Yxy color 46.3116, 0.3370, 0.3291.

# Color Blindness Simulation

Color vision deficiency is a very complex topic, and I could not describe the different causes any better than Wikipedia does, so if you want to learn more, you should check out their [article about color blindness](#).

## Dichromacy



### Original Color

46.3116, 0.3370, 0.3291

### Protanopia

46.5764, 0.3186, 0.3329

### Deuteranopia

46.1726, 0.3361, 0.3291



## Tritanopia

46.3124, 0.3287, 0.3119

# Trichromacy



## Original Color

46.3116, 0.3370, 0.3291

## Protanomaly

46.4909, 0.3248, 0.3316

## Deuteranomaly

46.1726, 0.3361, 0.3291

## Tritanomaly

46.3875, 0.3311, 0.3179

# Monochromacy



## Original Color

46.3116, 0.3370, 0.3291

## Achromatopsia

47.3531, 0.3127, 0.3290

## Achromatomaly

46.8850, 0.3214, 0.3290

# CSS Examples

## Text

The CSS property to change the color of the text to Yxy 46.3116, 0.3370, 0.3291 is called "color". The color property can be set on classes, ids or directly on the HTML element.

This example shows how text in the color `rgb(202, 175, 175)` looks like.

```
.text, #text, p{  
    color:rgb(202, 175, 175)  
}
```

If you want to add a text shadow in that color use the text-shadow property, you can generate a text shadow directly with our [CSS Text Shadow Generator](#).

Here you see how black text with a 4 pixel rgb(202, 175, 175) colored shadow looks like.

```
.shadow{ text-shadow: 4px 4px 2px rgb(202, 175, 175) }
```

## Border

The CSS property to change the border of an element to Yxy 46.3116, 0.3370, 0.3291 is called "border". The border property can be set on classes, ids or directly on the HTML element.

This example shows the color as border, it can be applied via the CSS property "border" or "border-color".

```
.border, #border, table{ border:4px solid rgb(202, 175, 175) }
```

If only the border color should be changed use the property border-color.

```
.border{ border-color:rgb(202, 175, 175) }
```

If you want to add a box shadow in that color use:

Here you see how a box with a 4 pixel rgb(202, 175, 175) colored shadow looks like.

```
.boxshadow{ -moz-box-shadow:4px 4px 4px  
4px rgb(202, 175, 175); -webkit-box-  
shadow:4px 4px 4px 4px rgb(202, 175, 175);  
box-shadow:4px 4px 4px 4px rgb(202, 175,  
175) }
```



# Background

The CSS property to change the background color of an element to Yxy 46.3116, 0.3370, 0.3291 is called "background". The background property can be set on classes, ids or directly on the HTML element.

```
.background, #background, body{  
background: rgb(202, 175, 175) }
```

If only the background color should be changed can be used:

```
.background{ background-color: rgb(202,  
175, 175) }
```

This example shows the color as background, it is applied via the CSS property "background".

To optimize and compress your CSS code, you can use our [online CSS compressor and optimizer](#) based on csstidy. If you want to create a linear or radial gradient as background or border, check our [CSS Gradient Generator](#).

Hey! You found this booklet interesting? Support Converting Colors with the new Membership Option!

The pro membership hides all ads, plus gives you double the colors in the color bucket, and more awesome pro features!

**[Learn more, Memberships starting at \\$2.50/m!](#)**

**Follow me  
on Twitter!**

@ConvertingColor