

# Converting Colors

$Yxy(46.5337, 0.3282, 0.3311)$

Have a look what the booklet for  
Yxy(46.5337, 0.3282, 0.3311)  
contains.

<b>Yxy(46.4447, 0.3285, 0.3316)</b> .....	3
<b>Conversions</b> .....	4
<b>Details</b> .....	6
<b>Harmonies</b> .....	12
<b>Previews</b> .....	24
<b>Color Blindness Simulation</b> .....	27
<b>CSS Examples</b> .....	30

# Color

**Yxy(46.4447, 0.3285, 0.3316)**

# Conversions

## Conversions Part 1

<b>Format</b>	<b>Color</b>
Hex	C2B2B0
RGB	194, 178, 176
RGB Percent	76%, 70%, 69%
CMY	0.2391, 0.3020, 0.3099
CMYK	0.00, 0.08, 0.09, 0.24
HSL	7°, 13%, 73%
HSV	7°, 9%, 76%
XYZ	46.0105, 46.4447, 47.6072
YIQ	182.5560, 10.1780, 2.7700

# Conversions

## Conversions Part 2

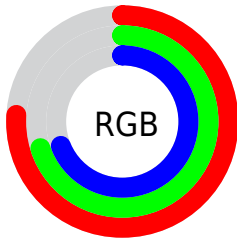
Format	Color
<a href="#">RYB</a>	<a href="#">194, 178, 176</a>
Decimal	<a href="#">12759728</a>
CIELab	<a href="#">73.83, 5.38, 3.09</a>
CIELCh	<a href="#">74, 6.204, 29.834</a>
Yxy	<a href="#">46.4447, 0.3285, 0.3316</a>
Android (android.graphics.Color)	<a href="#">4290949808</a> ( <a href="#">0xFFC2B2B0</a> )
YUV	<a href="#">182.5560, -3.2321, 10.0364</a>
Hunter-Lab	<a href="#">68.1503, 1.2480, 6.2875</a>

# Details

The Yxy color  $46.4447, 0.3285, 0.3316$  is a light color, and the websafe version is hex `CCCCCC`. A complement of this color would be  $50.8373, 0.2985, 0.3264$ , and the grayscale version is  $47.1147, 0.3127, 0.3290$ .

A 20% lighter version of the original color is  $85.1811, 0.3256, 0.3310$ , and  $21.6979, 0.3322, 0.3308$  is the 20% darker color. If you saturate the color by 10%, you get  $39.2960, 0.3492, 0.3346$ , and if you desaturate by 10%, it is  $54.5701, 0.3116, 0.3288$ .

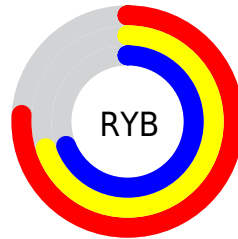
# Distribution



Red (76%)

Green (70%)

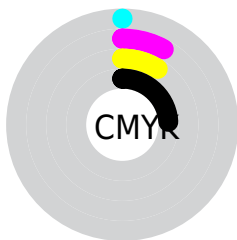
Blue (69%)



Red (76%)

Yellow (70%)

Blue (69%)

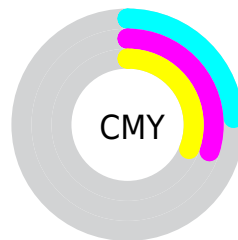


Cyan (0%)

Magenta (8%)

Yellow (9%)

Black (24%)



Cyan (24%)

Magenta (30%)

Yellow (31%)

# Brightness & Saturation Gradients

These gradients show how the Yxy color 46.4447, 0.3285, 0.3316 changes by changing the brightness by 10 percent. The first figure shows a shift by +10% for each color and the second figure -10%.


Similar to the brightness gradients but the following saturation gradients show a change of the Yxy color 46.4447, 0.3285, 0.3316 by changing the saturation by 10% instead.





 46.4447, 0.3285,  
0.3316

 46.4447, 0.3285,  
0.3316


372.5936, 0.3206,  
0.3304

 32.5969, 0.3305,  
0.3319


 84.8841, 0.3256,  
0.3312

 21.8178, 0.3331,  
0.3323


110.2446, 0.3245,  
0.3310

 13.7231, 0.3365,  
0.3328


140.2113, 0.3236,  
0.3308

 7.9283, 0.3413,  
0.3334

175.1687, 0.3228,  
0.3307

 4.0491, 0.3486,  
0.3343

215.5013, 0.3222,  
0.3306

 1.7011, 0.3608,  
0.3357

261.5934, 0.3216,

 0.4244, 0.4436,

0.3305

0.3521

313.8293, 0.3210,  
0.3304

0.0000, 0.0000,  
0.0000

46.4447, 0.3285,  
0.3316

46.4447, 0.3285,  
0.3316

39.2960, 0.3492,  
0.3346

54.5701, 0.3116,  
0.3288

33.0813, 0.3745,  
0.3377

63.7008, 0.2979,  
0.3263

27.7638, 0.4052,  
0.3408

73.8715, 0.2866,  
0.3239

23.3021, 0.4416,  
0.3436

85.1136, 0.2773,  
0.3219

19.6513, 0.4832,  
0.3456

90.2140, 0.2773,  
0.3289

■ 16.7625, 0.5277,  
0.3462

■ 14.5813, 0.5707,  
0.3450

■ 13.0464, 0.6061,  
0.3416

■ 12.0810, 0.6298,  
0.3372

# Harmonies

## Analogous

The Analogous color harmony consists of three colors that are next to each other on the color wheel.



46.4447, 0.3230, 0.3240



46.4447, 0.3285, 0.3316



46.4447, 0.3297, 0.3386

# Triad

The Triadic color harmony groups three colors that are evenly spaced from another and form a triangle on the color wheel.



46.4447, 0.3285, 0.3316



46.4447, 0.3105, 0.3406



46.4447, 0.2993, 0.3149

# Complementary

The Complementary color scheme is a pair of colors which are on the opposite of each other on the color wheel.



46.4447, 0.3285, 0.3316



50.8373, 0.2985, 0.3264

# Split Complementary

Split-complementary colors differ from the complementary color scheme. The scheme consists of three colors, the original color and two neighbors of the complement color.



46.4447, 0.2960, 0.3191



46.4447, 0.3285, 0.3316



46.4447, 0.3024, 0.3340

# Square

The Square scheme is like the rectangle color scheme, but the four colors are evenly spaced on the color wheel.



46.4447, 0.3285, 0.3316



46.4447, 0.3192, 0.3440



46.4447, 0.2972, 0.3261



46.4447, 0.3061, 0.3145



# Rectangle

The Rectangle color scheme consists of four colors that form a rectangle on the color wheel.



46.4447, 0.3285, 0.3316



46.4447, 0.3279, 0.3420



46.4447, 0.2972, 0.3261



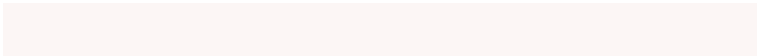
46.4447, 0.2977, 0.3159

# Sweetspot

The Sweet Spot groups the original color and five complimentary colors.



46.4467, 0.3285, 0.3316



93.1050, 0.3176, 0.3298



46.3360, 0.3152, 0.3087



20.1233, 0.3189, 0.3301



0.0000, 0.0000, 0.0000



21.4041, 0.3127, 0.3290

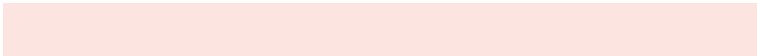


# Same Dimension

The Same Dimension uses a secret algorithm to generate beautiful new colors.



46.4467, 0.3285, 0.3316



81.5575, 0.3321, 0.3322



50.0709, 0.3273, 0.3427



10.2542, 0.3286, 0.3316



7.9688, 0.6298, 0.3381



0.4058, 0.5996, 0.3621



# Inverse Universe

The Inverse Universe completely reimagines the original color for something new.



50.8373, 0.2985, 0.3264



90.9889, 0.2957, 0.3258



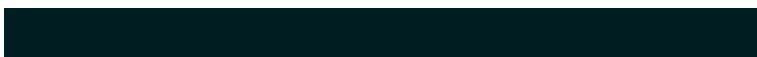
47.0778, 0.2985, 0.3149



11.2310, 0.2984, 0.3264



22.1428, 0.2150, 0.2940

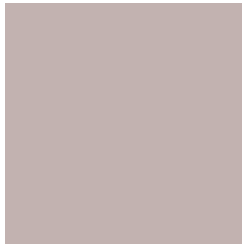


1.0123, 0.2174, 0.3025



# Previews

## White Background



This preview shows how the Yxy color 46.4447, 0.3285, 0.3316 looks on a white background.

## Color Contrast Check

Large Text (above 18pt) WCAG AA × Fail

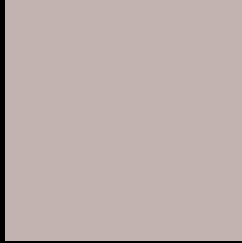
Any Text WCAG AA × Fail

Large Text (above 18pt) WCAG AAA × Fail

Any Text WCAG AAA × Fail



# Black Background



This preview shows how the Yxy color 46.4447, 0.3285, 0.3316 looks on a black background.

## Color Contrast Check

Large Text (above 18pt) WCAG AA ✓ Pass

Any Text WCAG AA ✓ Pass

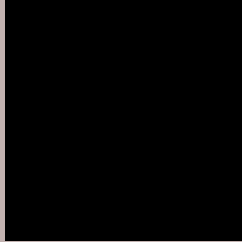
Large Text (above 18pt) WCAG AAA ✓ Pass

Any Text WCAG AAA ✓ Pass

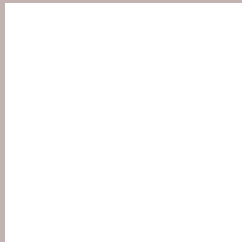
If you want to check with other color combinations, try the [Color Contrast Checker](#).

**Yxy 46.4447, 0.3285, 0.3316**

## Background



This preview shows how black text looks on a background with the Yxy color 46.4447, 0.3285, 0.3316.



This preview shows how white text looks on a background with the Yxy color 46.4447, 0.3285, 0.3316.

# Color Blindness Simulation

Color vision deficiency is a very complex topic, and I could not describe the different causes any better than Wikipedia does, so if you want to learn more, you should check out their [article about color blindness](#).

## Dichromacy



### Original Color

46.4447, 0.3285, 0.3316

### Protanopia

46.6612, 0.3202, 0.3342

### Deuteranopia

46.6028, 0.3350, 0.3291



## Tritanopia

46.5041, 0.3188, 0.3115

# Trichromacy



## Original Color

46.4447, 0.3285, 0.3316

## Protanomaly

46.6357, 0.3230, 0.3329

## Deuteranomaly

46.5846, 0.3322, 0.3303

## Tritanomaly

46.5492, 0.3219, 0.3190

# Monochromacy



## Original Color

46.4447, 0.3285, 0.3316

## Achromatopsia

47.3531, 0.3127, 0.3290

## Achromatomaly

46.9078, 0.3187, 0.3303

# CSS Examples

## Text

The CSS property to change the color of the text to Yxy 46.4447, 0.3285, 0.3316 is called "color". The color property can be set on classes, ids or directly on the HTML element.

This example shows how text in the color `rgb(194, 178, 176)` looks like.

```
.text, #text, p{  
    color:rgb(194, 178, 176)  
}
```

If you want to add a text shadow in that color use the text-shadow property, you can generate a text shadow directly with our [CSS Text Shadow Generator](#).

Here you see how black text with a 4 pixel rgb(194, 178, 176) colored shadow looks like.

```
.shadow{ text-shadow: 4px 4px 2px rgb(194, 178, 176) }
```

## Border

The CSS property to change the border of an element to Yxy 46.4447, 0.3285, 0.3316 is called "border". The border property can be set on classes, ids or directly on the HTML element.

This example shows the color as border, it can be applied via the CSS property "border" or "border-color".

```
.border, #border, table{ border:4px solid rgb(194, 178, 176) }
```

If only the border color should be changed use the property `border-color`.

```
.border{ border-color:rgb(194, 178, 176) }
```

If you want to add a box shadow in that color use:

Here you see how a box with a 4 pixel `rgb(194, 178, 176)` colored shadow looks like.

```
.boxshadow{ -moz-box-shadow:4px 4px 4px  
4px rgb(194, 178, 176); -webkit-box-  
shadow:4px 4px 4px 4px rgb(194, 178, 176);  
box-shadow:4px 4px 4px 4px rgb(194, 178,  
176) }
```



# Background

The CSS property to change the background color of an element to Yxy 46.4447, 0.3285, 0.3316 is called "background". The background property can be set on classes, ids or directly on the HTML element.

```
.background, #background, body{  
background: rgb(194, 178, 176) }
```

If only the background color should be changed can be used:

```
.background{ background-color: rgb(194,  
178, 176) }
```

This example shows the color as background, it is applied via the CSS property "background".

To optimize and compress your CSS code, you can use our [online CSS compressor and optimizer](#) based on csstidy. If you want to create a linear or radial gradient as background or border, check our [CSS Gradient Generator](#).

Hey! You found this booklet interesting? Support Converting Colors with the new Membership Option!

The pro membership hides all ads, plus gives you double the colors in the color bucket, and more awesome pro features!

**[Learn more, Memberships starting at \\$2.50/m!](#)**

**Follow me  
on Twitter!**

@ConvertingColor