

Converting Colors

$Yxy(46.6128, 0.3413, 0.3250)$

Have a look what the booklet for
Yxy(46.6128, 0.3413, 0.3250)
contains.

Yxy(46.4714, 0.3411, 0.3242)	3
<i>Conversions</i>	4
<i>Details</i>	6
<i>Harmonies</i>	12
<i>Previews</i>	24
<i>Color Blindness Simulation</i>	27
<i>CSS Examples</i>	30

Color

Yxy(46.4714, 0.3411, 0.3242)

Conversions

Conversions Part 1

Format	Color
Hex	D0ADB1
RGB	208, 173, 177
RGB Percent	82%, 68%, 69%
CMY	0.1842, 0.3216, 0.3060
CMYK	0.00, 0.17, 0.15, 0.18
HSL	353°, 27%, 75%
HSV	353°, 17%, 82%
XYZ	48.8939, 46.4714, 47.9765
YIQ	183.9210, 19.5760, 8.6640

Conversions

Conversions Part 2

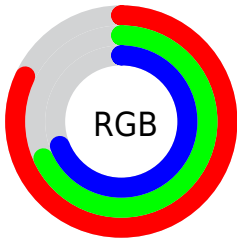
Format	Color
R_{YB}	208, 173, 177
Decimal	13675953
CIE _{Lab}	73.85, 13.34, 2.72
CIE _{LCh}	74, 13.618, 11.541
Yxy	46.4714, 0.3411, 0.3242
Android (android.graphics.Color)	4291866033 (0xFFD0ADB1)
YUV	183.9210, -3.4121, 21.1173
Hunter-Lab	68.1699, 8.7291, 5.9920

Details

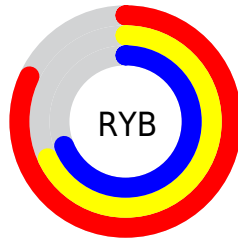
The Yxy color $46.4714, 0.3411, 0.3242$ is a light color, and the websafe version is hex `CC9999`. A complement of this color would be $58.3668, 0.2900, 0.3339$, and the grayscale version is $47.8993, 0.3127, 0.3290$.

A 20% lighter version of the original color is $83.1818, 0.3282, 0.3251$, and $21.9023, 0.3495, 0.3242$ is the 20% darker color. If you saturate the color by 10%, you get $38.4209, 0.3636, 0.3212$, and if you desaturate by 10%, it is $55.8674, 0.3230, 0.3271$.

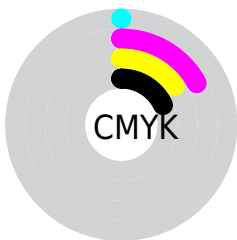
Distribution



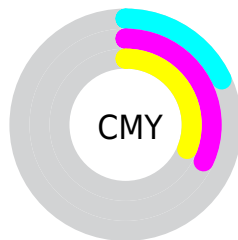
- Red (82%)
- Green (68%)
- Blue (69%)



- Red (82%)
- Yellow (68%)
- Blue (69%)



- Cyan (0%)
- Magenta (17%)
- Yellow (15%)
- Black (18%)





- Cyan (18%)
- Magenta (32%)
- Yellow (31%)

Brightness & Saturation Gradients


These gradients show how the Yxy color 46.4714, 0.3411, 0.3242 changes by changing the brightness by 10 percent. The first figure shows a shift by +10% for each color and the second figure -10%.


Similar to the brightness gradients but the following saturation gradients show a change of the Yxy color 46.4714, 0.3411, 0.3242 by changing the saturation by 10% instead.


 46.4714, 0.3411,
0.3242

 46.4714, 0.3411,
0.3242

372.7006, 0.3268,
0.3267

 32.6180, 0.3447,
0.3235


 84.9241, 0.3359,
0.3251

 21.8340, 0.3493,
0.3227


110.2921, 0.3340,
0.3255

 13.7349, 0.3555,
0.3215


140.2671, 0.3323,
0.3258

 7.9365, 0.3641,
0.3198

175.2334, 0.3309,
0.3260

 4.0544, 0.3772,
0.3171

215.5756, 0.3297,
0.3262

 1.7040, 0.3990,
0.3122

261.6779, 0.3286,

 0.4263, 0.5108,

0.3264

0.2979

313.9248, 0.3277,
0.3266

0.0000, 0.0000,
0.0000

46.4714, 0.3411,
0.3242

46.4714, 0.3411,
0.3242

38.4209, 0.3636,
0.3212

55.8674, 0.3230,
0.3271

31.6485, 0.3913,
0.3181

66.6599, 0.3084,
0.3298

26.0901, 0.4249,
0.3154

78.9051, 0.2967,
0.3323

21.6739, 0.4643,
0.3133

91.8808, 0.2871,
0.3333

18.3203, 0.5080,
0.3126

92.1526, 0.2849,
0.3289

■ 15.9395, 0.5525,
0.3136

■ 14.4270, 0.5919,
0.3169

■ 13.6467, 0.6206,
0.3218

■ 13.4771, 0.6275,
0.3230

Harmonies

Analogous

The Analogous color harmony consists of three colors that are next to each other on the color wheel.



46.4714, 0.3246, 0.3095



46.4714, 0.3411, 0.3242



46.4714, 0.3499, 0.3405

Triad

The Triadic color harmony groups three colors that are evenly spaced from another and form a triangle on the color wheel.



46.4714, 0.3411, 0.3242



46.4714, 0.3193, 0.3606



46.4714, 0.2782, 0.3027

Complementary

The Complementary color scheme is a pair of colors which are on the opposite of each other on the color wheel.



46.4714, 0.3411, 0.3242



58.3668, 0.2900, 0.3339

Split Complementary

Split-complementary colors differ from the complementary color scheme. The scheme consists of three colors, the original color and two neighbors of the complement color.



46.4714, 0.2770, 0.3157



46.4714, 0.3411, 0.3242



46.4714, 0.3003, 0.3498

Square

The Square scheme is like the rectangle color scheme, but the four colors are evenly spaced on the color wheel.



46.4714, 0.3411, 0.3242



46.4714, 0.3370, 0.3621



46.4714, 0.2849, 0.3330



46.4714, 0.2884, 0.2971

Rectangle

The Rectangle color scheme consists of four colors that form a rectangle on the color wheel.



46.4714, 0.3411, 0.3242



46.4714, 0.3500, 0.3503



46.4714, 0.2849, 0.3330



46.4714, 0.2767, 0.3063

Sweetspot

The Sweet Spot groups the original color and five complimentary colors.



46.4735, 0.3411, 0.3242



91.4266, 0.3202, 0.3276



47.2703, 0.3112, 0.2872



19.3210, 0.3213, 0.3274



0.0000, 0.0000, 0.0000



21.4041, 0.3127, 0.3290

Same Dimension

The Same Dimension uses a secret algorithm to generate beautiful new colors.



46.4735, 0.3411, 0.3242



69.0887, 0.3482, 0.3232



51.7266, 0.3419, 0.3454



11.8298, 0.3273, 0.3264



8.4052, 0.6252, 0.3218



0.4775, 0.5877, 0.3011

Inverse Universe

The Inverse Universe completely reimagines the original color for something new.



46.4735, 0.3411, 0.3242



69.0887, 0.3482, 0.3232



52.2883, 0.2867, 0.3120



11.8298, 0.3273, 0.3264



8.4052, 0.6252, 0.3218



0.4775, 0.5877, 0.3011

Previews

White Background



This preview shows how the Yxy color 46.4714, 0.3411, 0.3242 looks on a white background.

Color Contrast Check

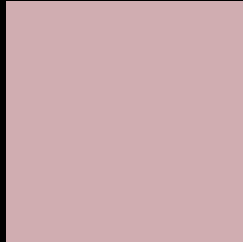
Large Text (above 18pt) WCAG AA × Fail

Any Text WCAG AA × Fail

Large Text (above 18pt) WCAG AAA × Fail

Any Text WCAG AAA × Fail

Black Background



This preview shows how the Yxy color 46.4714, 0.3411, 0.3242 looks on a black background.

Color Contrast Check

Large Text (above 18pt) WCAG AA ✓ Pass

Any Text WCAG AA ✓ Pass

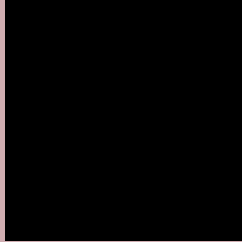
Large Text (above 18pt) WCAG AAA ✓ Pass

Any Text WCAG AAA ✓ Pass

If you want to check with other color combinations, try the [Color Contrast Checker](#).

Yxy 46.4714, 0.3411, 0.3242

Background



This preview shows how black text looks on a background with the Yxy color 46.4714, 0.3411, 0.3242.



This preview shows how white text looks on a background with the Yxy color 46.4714, 0.3411, 0.3242.

Color Blindness Simulation

Color vision deficiency is a very complex topic, and I could not describe the different causes any better than Wikipedia does, so if you want to learn more, you should check out their [article about color blindness](#).

Dichromacy



Original Color

46.4714, 0.3411, 0.3242

Protanopia

46.6982, 0.3161, 0.3290

Deuteranopia

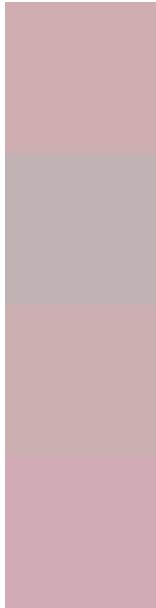
46.6028, 0.3350, 0.3291



Tritanopia

46.5631, 0.3351, 0.3133

Trichromacy



Original Color

46.4714, 0.3411, 0.3242

Protanomaly

46.4735, 0.3242, 0.3265

Deuteranomaly

46.6319, 0.3379, 0.3278

Tritanomaly

46.4378, 0.3377, 0.3169

Monochromacy



Original Color

46.4714, 0.3411, 0.3242

Achromatopsia

47.9320, 0.3127, 0.3290

Achromatomaly

47.3162, 0.3232, 0.3278

CSS Examples

Text

The CSS property to change the color of the text to Yxy 46.4714, 0.3411, 0.3242 is called "color". The color property can be set on classes, ids or directly on the HTML element.

This example shows how text in the color `rgb(208, 173, 177)` looks like.

```
.text, #text, p{  
    color:rgb(208, 173, 177)  
}
```

If you want to add a text shadow in that color use the text-shadow property, you can generate a text shadow directly with our [CSS Text Shadow Generator](#).

Here you see how black text with a 4 pixel rgb(208, 173, 177) colored shadow looks like.

```
.shadow{ text-shadow: 4px 4px 2px rgb(208, 173, 177) }
```

Border

The CSS property to change the border of an element to Yxy 46.4714, 0.3411, 0.3242 is called "border". The border property can be set on classes, ids or directly on the HTML element.

This example shows the color as border, it can be applied via the CSS property "border" or "border-color".

```
.border, #border, table{ border:4px solid rgb(208, 173, 177) }
```

If only the border color should be changed use the property `border-color`.

```
.border{ border-color:rgb(208, 173, 177) }
```

If you want to add a box shadow in that color use:

Here you see how a box with a 4 pixel `rgb(208, 173, 177)` colored shadow looks like.

```
.boxshadow{ -moz-box-shadow:4px 4px 4px  
4px rgb(208, 173, 177); -webkit-box-  
shadow:4px 4px 4px 4px rgb(208, 173, 177);  
box-shadow:4px 4px 4px 4px rgb(208, 173,  
177) }
```


Background

The CSS property to change the background color of an element to Yxy 46.4714, 0.3411, 0.3242 is called "background". The background property can be set on classes, ids or directly on the HTML element.

```
.background, #background, body{  
background: rgb(208, 173, 177) }
```

If only the background color should be changed can be used:

```
.background{ background-color: rgb(208,  
173, 177) }
```

This example shows the color as background, it is applied via the CSS property "background".

To optimize and compress your CSS code, you can use our [online CSS compressor and optimizer](#) based on csstidy. If you want to create a linear or radial gradient as background or border, check our [CSS Gradient Generator](#).

Hey! You found this booklet interesting? Support Converting Colors with the new Membership Option!

The pro membership hides all ads, plus gives you double the colors in the color bucket, and more awesome pro features!

[Learn more, Memberships starting at \\$2.50/m!](#)

**Follow me
on Twitter!**

@ConvertingColor