

Converting Colors

$Yxy(46.6637, 0.3350, 0.3414)$

Have a look what the booklet for
Yxy(46.6637, 0.3350, 0.3414)
contains.

Yxy(46.7069, 0.3351, 0.3418)	3
Conversions	4
Details	6
Harmonies	12
Previews	24
Color Blindness Simulation	27
CSS Examples	30

Color

Yxy(46.7069, 0.3351, 0.3418)

Conversions

Conversions Part 1

Format	Color
Hex	C3B3A9
RGB	195, 179, 169
RGB Percent	76%, 70%, 66%
CMY	0.2352, 0.2980, 0.3371
CMYK	0.00, 0.08, 0.13, 0.24
HSL	23°, 18%, 71%
HSV	23°, 13%, 76%
XYZ	45.7913, 46.7069, 44.1515
YIQ	182.6440, 12.7460, 0.2820

Conversions

Conversions Part 2

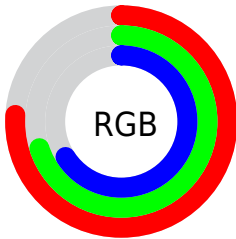
Format	Color
R_{YB}	195, 185, 169
Decimal	12825513
CIE _{Lab}	74.00, 4.03, 7.14
CIE _{LCh}	74, 8.201, 60.569
Yxy	46.7069, 0.3351, 0.3418
Android (android.graphics.Color)	4291015593 (0xFFC3B3A9)
YUV	182.6440, -6.7265, 10.8362
Hunter-Lab	68.3424, 0.0007, 9.5364

Details

The Yxy color **46.7069, 0.3351, 0.3418** is a light color, and the websafe version is hex **CCCCCC**. A complement of this color would be **47.0942, 0.2923, 0.3159**, and the grayscale version is **47.1837, 0.3127, 0.3290**.

A 20% lighter version of the original color is **85.4939, 0.3313, 0.3400**, and **21.8688, 0.3414, 0.3447** is the 20% darker color. If you saturate the color by 10%, you get **41.4207, 0.3552, 0.3520**, and if you desaturate by 10%, it is **52.5264, 0.3179, 0.3321**.

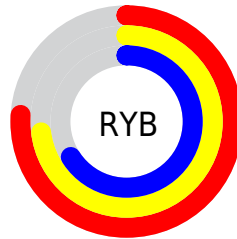
Distribution



Red (76%)

Green (70%)

Blue (66%)



Red (76%)

Yellow (73%)

Blue (66%)

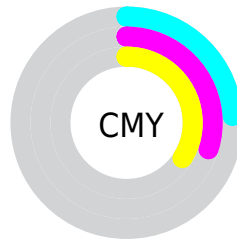


Cyan (0%)

Magenta (8%)

Yellow (13%)

Black (24%)



Cyan (24%)

Magenta (30%)

Yellow (34%)

Brightness & Saturation Gradients

These gradients show how the Yxy color 46.7069, 0.3351, 0.3418 changes by changing the brightness by 10 percent. The first figure shows a shift by +10% for each color and the second figure -10%.

Similar to the brightness gradients but the following saturation gradients show a change of the Yxy color 46.7069, 0.3351, 0.3418 by changing the saturation by 10% instead.

■ 46.7069, 0.3351,
0.3418

■ 46.7069, 0.3351,
0.3418

373.6434, 0.3239,
0.3355

■ 32.8040, 0.3379,
0.3434

■ 85.2760, 0.3310,
0.3395

■ 21.9763, 0.3416,
0.3453

110.7109, 0.3295,
0.3387

■ 13.8395, 0.3464,
0.3479

140.7587, 0.3282,
0.3379

■ 8.0091, 0.3532,
0.3515

175.8036, 0.3271,
0.3373

■ 4.1008, 0.3634,
0.3568

216.2302, 0.3261,
0.3368

■ 1.7301, 0.3804,
0.3651

262.4227, 0.3253,

■ 0.4430, 0.5397,

0.3363

0.4603

314.7657, 0.3245,
0.3359

0.0000, 0.0000,
0.0000

46.7069, 0.3351,
0.3418

46.7069, 0.3351,
0.3418

41.4207, 0.3552,
0.3520

52.5264, 0.3179,
0.3321

36.6461, 0.3784,
0.3625

58.8878, 0.3031,
0.3230

32.3689, 0.4050,
0.3728

65.8073, 0.2905,
0.3147

28.5719, 0.4347,
0.3821

73.2987, 0.2798,
0.3070

25.2369, 0.4667,
0.3894

80.6095, 0.2764,
0.3119

■ 22.3440, 0.4997,
0.3935

■ 87.8859, 0.2775,
0.3248

■ 19.8719, 0.5313,
0.3931

■ 90.3436, 0.2778,
0.3289

■ 17.7966, 0.5588,
0.3875

■ 16.6125, 0.5748,
0.3818

Harmonies

Analogous

The Analogous color harmony consists of three colors that are next to each other on the color wheel.



46.7069, 0.3337, 0.3326



46.7069, 0.3351, 0.3418



46.7069, 0.3304, 0.3478

Triad

The Triadic color harmony groups three colors that are evenly spaced from another and form a triangle on the color wheel.



46.7069, 0.3351, 0.3418



46.7069, 0.2989, 0.3353



46.7069, 0.3043, 0.3100

Complementary

The Complementary color scheme is a pair of colors which are on the opposite of each other on the color wheel.



46.7069, 0.3351, 0.3418



47.0942, 0.2923, 0.3159

Split Complementary

Split-complementary colors differ from the complementary color scheme. The scheme consists of three colors, the original color and two neighbors of the complement color.



46.7069, 0.2952, 0.3104



46.7069, 0.3351, 0.3418



46.7069, 0.2922, 0.3248

Square

The Square scheme is like the rectangle color scheme, but the four colors are evenly spaced on the color wheel.



46.7069, 0.3351, 0.3418



46.7069, 0.3094, 0.3442



46.7069, 0.2908, 0.3157



46.7069, 0.3157, 0.3145

Rectangle

The Rectangle color scheme consists of four colors that form a rectangle on the color wheel.



46.7069, 0.3351, 0.3418



46.7069, 0.3245, 0.3491



46.7069, 0.2908, 0.3157



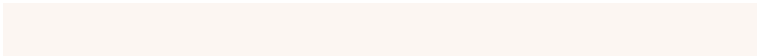
46.7069, 0.3008, 0.3096

Sweetspot

The Sweet Spot groups the original color and five complimentary colors.



46.7090, 0.3351, 0.3418



93.2611, 0.3191, 0.3328



43.4953, 0.3227, 0.3087



20.2421, 0.3203, 0.3335



0.0000, 0.0000, 0.0000



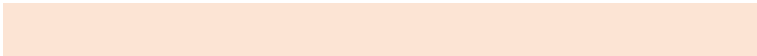
21.4041, 0.3127, 0.3290

Same Dimension

The Same Dimension uses a secret algorithm to generate beautiful new colors.



46.7090, 0.3351, 0.3418



80.7793, 0.3407, 0.3448



52.1598, 0.3329, 0.3579



10.6973, 0.3280, 0.3379



10.9473, 0.5724, 0.3837



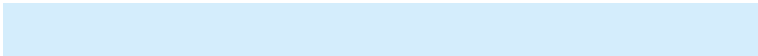
0.6066, 0.5307, 0.4168

Inverse Universe

The Inverse Universe completely reimagines the original color for something new.



47.0942, 0.2923, 0.3159



81.6026, 0.2877, 0.3127



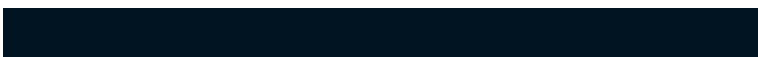
41.9068, 0.2918, 0.2984



10.7582, 0.2984, 0.3200



11.4858, 0.1888, 0.1996



0.6263, 0.1977, 0.2317

Previews

White Background



This preview shows how the Yxy color 46.7069, 0.3351, 0.3418 looks on a white background.

Color Contrast Check

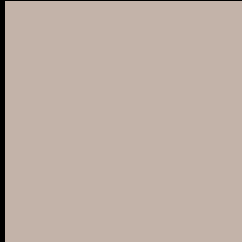
Large Text (above 18pt) WCAG AA × Fail

Any Text WCAG AA × Fail

Large Text (above 18pt) WCAG AAA × Fail

Any Text WCAG AAA × Fail

Black Background



This preview shows how the Yxy color 46.7069, 0.3351, 0.3418 looks on a black background.

Color Contrast Check

Large Text (above 18pt) WCAG AA ✓ Pass

Any Text WCAG AA ✓ Pass

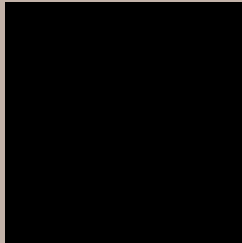
Large Text (above 18pt) WCAG AAA ✓ Pass

Any Text WCAG AAA ✓ Pass

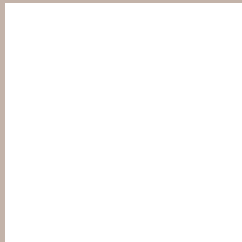
If you want to check with other color combinations, try the [Color Contrast Checker](#).

Yxy 46.7069, 0.3351, 0.3418

Background



This preview shows how black text looks on a background with the Yxy color 46.7069, 0.3351, 0.3418.



This preview shows how white text looks on a background with the Yxy color 46.7069, 0.3351, 0.3418.

Color Blindness Simulation

Color vision deficiency is a very complex topic, and I could not describe the different causes any better than Wikipedia does, so if you want to learn more, you should check out their [article about color blindness](#).

Dichromacy



Original Color

46.7069, 0.3351, 0.3418

Protanopia

46.6414, 0.3277, 0.3433

Deuteranopia

46.7903, 0.3430, 0.3366



Tritanopia

46.7741, 0.3205, 0.3116

Trichromacy



Original Color

46.7069, 0.3351, 0.3418

Protanomaly

46.6212, 0.3305, 0.3420

Deuteranomaly

46.7641, 0.3401, 0.3379

Tritanomaly

46.6920, 0.3262, 0.3228

Monochromacy



Original Color

46.7069, 0.3351, 0.3418

Achromatopsia

47.3531, 0.3127, 0.3290

Achromatomaly

47.2350, 0.3202, 0.3342

CSS Examples

Text

The CSS property to change the color of the text to Yxy 46.7069, 0.3351, 0.3418 is called "color". The color property can be set on classes, ids or directly on the HTML element.

This example shows how text in the color `rgb(195, 179, 169)` looks like.

```
.text, #text, p{  
    color:rgb(195, 179, 169)  
}
```

If you want to add a text shadow in that color use the text-shadow property, you can generate a text shadow directly with our [CSS Text Shadow Generator](#).

Here you see how black text with a 4 pixel rgb(195, 179, 169) colored shadow looks like.

```
.shadow{ text-shadow: 4px 4px 2px rgb(195, 179, 169) }
```

Border

The CSS property to change the border of an element to Yxy 46.7069, 0.3351, 0.3418 is called "border". The border property can be set on classes, ids or directly on the HTML element.

This example shows the color as border, it can be applied via the CSS property "border" or "border-color".

```
.border, #border, table{ border:4px solid rgb(195, 179, 169) }
```

If only the border color should be changed use the property `border-color`.

```
.border{ border-color:rgb(195, 179, 169) }
```

If you want to add a box shadow in that color use:

Here you see how a box with a 4 pixel `rgb(195, 179, 169)` colored shadow looks like.

```
.boxshadow{ -moz-box-shadow:4px 4px 4px  
4px rgb(195, 179, 169); -webkit-box-  
shadow:4px 4px 4px 4px rgb(195, 179, 169);  
box-shadow:4px 4px 4px 4px rgb(195, 179,  
169) }
```


Background

The CSS property to change the background color of an element to Yxy 46.7069, 0.3351, 0.3418 is called "background". The background property can be set on classes, ids or directly on the HTML element.

```
.background, #background, body{  
background: rgb(195, 179, 169) }
```

If only the background color should be changed can be used:

```
.background{ background-color: rgb(195,  
179, 169) }
```

This example shows the color as background, it is applied via the CSS property "background".

To optimize and compress your CSS code, you can use our [online CSS compressor and optimizer](#) based on csstidy. If you want to create a linear or radial gradient as background or border, check our [CSS Gradient Generator](#).

Hey! You found this booklet interesting? Support Converting Colors with the new Membership Option!

The pro membership hides all ads, plus gives you double the colors in the color bucket, and more awesome pro features!

[Learn more, Memberships starting at \\$2.50/m!](#)

**Follow me
on Twitter!**

@ConvertingColor