

Converting Colors

$Yxy(46.6760, 0.3494, 0.3255)$

Have a look what the booklet for
Yxy(46.6760, 0.3494, 0.3255)
contains.

Yxy(46.4780, 0.3497, 0.3255)	3
Conversions	4
Details	6
Harmonies	12
Previews	24
Color Blindness Simulation	27
CSS Examples	30

Color

Yxy(46.4780, 0.3497, 0.3255)

Conversions

Conversions Part 1

Format	Color
Hex	D6ABAE
RGB	214, 171, 174
RGB Percent	84%, 67%, 68%
CMY	0.1608, 0.3294, 0.3177
CMYK	0.00, 0.20, 0.19, 0.16
HSL	356°, 34%, 75%
HSV	356°, 20%, 84%
XYZ	49.9335, 46.4780, 46.3780
YIQ	184.1990, 24.6650, 10.0490

Conversions

Conversions Part 2

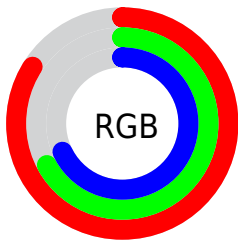
Format	Color
R _Y B	214, 171, 174
Decimal	14068654
CIE Lab	73.85, 16.14, 4.44
CIE LCh	74, 16.744, 15.381
Yxy	46.4780, 0.3497, 0.3255
Android (android.graphics.Color)	4292258734 (0xFFD6ABAE)
YUV	184.1990, -5.0281, 26.1355
Hunter-Lab	68.1748, 11.4336, 7.3884

Details

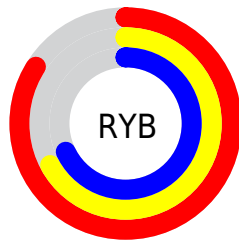
The Yxy color **46.4780, 0.3497, 0.3255** is a light color, and the websafe version is hex **CC9999**. A complement of this color would be **61.4559, 0.2847, 0.3326**, and the grayscale version is **48.0674, 0.3127, 0.3290**.

A 20% lighter version of the original color is **81.3099, 0.3312, 0.3261**, and **21.9697, 0.3603, 0.3243** is the 20% darker color. If you saturate the color by 10%, you get **38.3191, 0.3751, 0.3237**, and if you desaturate by 10%, it is **56.0651, 0.3292, 0.3273**.

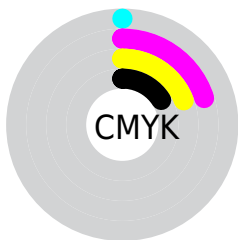
Distribution



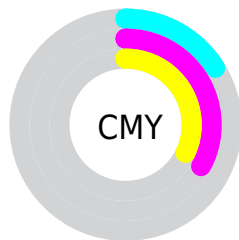
- Red (84%)
- Green (67%)
- Blue (68%)



- Red (84%)
- Yellow (67%)
- Blue (68%)



- Cyan (0%)
- Magenta (20%)
- Yellow (19%)
- Black (16%)





- Cyan (16%)
- Magenta (33%)
- Yellow (32%)

Brightness & Saturation Gradients


These gradients show how the Yxy color 46.4780, 0.3497, 0.3255 changes by changing the brightness by 10 percent. The first figure shows a shift by +10% for each color and the second figure -10%.


Similar to the brightness gradients but the following saturation gradients show a change of the Yxy color 46.4780, 0.3497, 0.3255 by changing the saturation by 10% instead.

 46.4780, 0.3497,
0.3255

 46.4780, 0.3497,
0.3255

372.7270, 0.3311,
0.3275

 32.6232, 0.3544,
0.3249


 84.9339, 0.3429,
0.3263

 21.8379, 0.3604,
0.3242


110.3038, 0.3404,
0.3265

 13.7379, 0.3685,
0.3232


140.2808, 0.3382,
0.3268

 7.9386, 0.3798,
0.3216

175.2494, 0.3364,
0.3269

 4.0557, 0.3969,
0.3189

215.5939, 0.3348,
0.3271

 1.7048, 0.4253,
0.3139

261.6988, 0.3334,

 0.4267, 0.5792,

0.3272

0.3091

313.9484, 0.3322,
0.3274

0.0000, 0.0000,
0.0000

46.4780, 0.3497,
0.3255

46.4780, 0.3497,
0.3255

38.3191, 0.3751,
0.3237

56.0651, 0.3292,
0.3273

31.5142, 0.4064,
0.3219

67.1374, 0.3128,
0.3290

25.9918, 0.4440,
0.3204

79.7566, 0.2997,
0.3305

21.6715, 0.4872,
0.3195

92.9495, 0.2890,
0.3303

18.4637, 0.5334,
0.3196

93.0362, 0.2883,
0.3289

■ 16.2665, 0.5774,
0.3210

■ 14.9590, 0.6124,
0.3237

■ 14.3302, 0.6337,
0.3265

Harmonies

Analogous

The Analogous color harmony consists of three colors that are next to each other on the color wheel.



46.4780, 0.3302, 0.3072



46.4780, 0.3497, 0.3255



46.4780, 0.3590, 0.3453

Triad

The Triadic color harmony groups three colors that are evenly spaced from another and form a triangle on the color wheel.



46.4780, 0.3497, 0.3255



46.4780, 0.3176, 0.3670



46.4780, 0.2715, 0.2952

Complementary

The Complementary color scheme is a pair of colors which are on the opposite of each other on the color wheel.



46.4780, 0.3497, 0.3255



61.4559, 0.2847, 0.3326

Split Complementary

Split-complementary colors differ from the complementary color scheme. The scheme consists of three colors, the original color and two neighbors of the complement color.



46.4780, 0.2686, 0.3099



46.4780, 0.3497, 0.3255



46.4780, 0.2946, 0.3523

Square

The Square scheme is like the rectangle color scheme, but the four colors are evenly spaced on the color wheel.



46.4780, 0.3497, 0.3255



46.4780, 0.3400, 0.3703



46.4780, 0.2768, 0.3309



46.4780, 0.2851, 0.2899

Rectangle

The Rectangle color scheme consists of four colors that form a rectangle on the color wheel.



46.4780, 0.3497, 0.3255



46.4780, 0.3580, 0.3570



46.4780, 0.2768, 0.3309



46.4780, 0.2693, 0.2992

Sweetspot

The Sweet Spot groups the original color and five complimentary colors.



46.4801, 0.3497, 0.3255



89.7403, 0.3222, 0.3280



47.7464, 0.3120, 0.2789



18.9798, 0.3233, 0.3279



0.0000, 0.0000, 0.0000



21.4041, 0.3127, 0.3290

Same Dimension

The Same Dimension uses a secret algorithm to generate beautiful new colors.



46.4801, 0.3497, 0.3255



63.8340, 0.3596, 0.3247



53.5978, 0.3483, 0.3505



12.4346, 0.3280, 0.3274



8.6673, 0.6320, 0.3255



0.5278, 0.6082, 0.3124

Inverse Universe

The Inverse Universe completely reimagines the original color for something new.



46.4801, 0.3497, 0.3255



63.8340, 0.3596, 0.3247



53.0325, 0.2814, 0.3065



12.4346, 0.3280, 0.3274



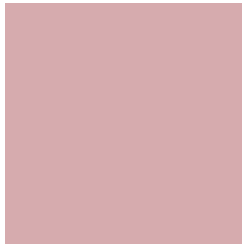
8.6673, 0.6320, 0.3255



0.5278, 0.6082, 0.3124

Previews

White Background



This preview shows how the Yxy color 46.4780, 0.3497, 0.3255 looks on a white background.

Color Contrast Check

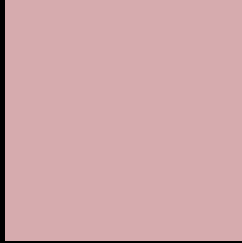
Large Text (above 18pt) WCAG AA × Fail

Any Text WCAG AA × Fail

Large Text (above 18pt) WCAG AAA × Fail

Any Text WCAG AAA × Fail

Black Background



This preview shows how the Yxy color 46.4780, 0.3497, 0.3255 looks on a black background.

Color Contrast Check

Large Text (above 18pt) WCAG AA ✓ Pass

Any Text WCAG AA ✓ Pass

Large Text (above 18pt) WCAG AAA ✓ Pass

Any Text WCAG AAA ✓ Pass

If you want to check with other color combinations, try the [Color Contrast Checker](#).

Yxy 46.4780, 0.3497, 0.3255

Background



This preview shows how black text looks on a background with the Yxy color 46.4780, 0.3497, 0.3255.



This preview shows how white text looks on a background with the Yxy color 46.4780, 0.3497, 0.3255.

Color Blindness Simulation

Color vision deficiency is a very complex topic, and I could not describe the different causes any better than Wikipedia does, so if you want to learn more, you should check out their [article about color blindness](#).

Dichromacy



Original Color

46.4780, 0.3497, 0.3255

Protanopia

46.6573, 0.3169, 0.3303

Deuteranopia

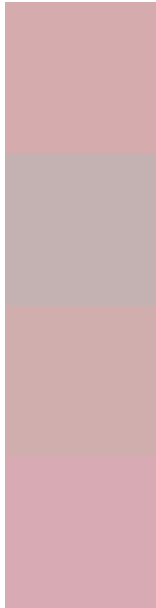
46.7643, 0.3395, 0.3328



Tritanopia

46.6154, 0.3427, 0.3135

Trichromacy



Original Color

46.4780, 0.3497, 0.3255

Protanomaly

46.3944, 0.3287, 0.3278

Deuteranomaly

46.5546, 0.3435, 0.3303

Tritanomaly

46.4918, 0.3454, 0.3171

Monochromacy



Original Color

46.4780, 0.3497, 0.3255

Achromatopsia

47.9320, 0.3127, 0.3290

Achromatomaly

47.1376, 0.3259, 0.3278

CSS Examples

Text

The CSS property to change the color of the text to Yxy 46.4780, 0.3497, 0.3255 is called "color". The color property can be set on classes, ids or directly on the HTML element.

This example shows how text in the color `rgb(214, 171, 174)` looks like.

```
.text, #text, p{  
    color:rgb(214, 171, 174)  
}
```

If you want to add a text shadow in that color use the text-shadow property, you can generate a text shadow directly with our [CSS Text Shadow Generator](#).

Here you see how black text with a 4 pixel rgb(214, 171, 174) colored shadow looks like.

```
.shadow{ text-shadow: 4px 4px 2px rgb(214, 171, 174) }
```

Border

The CSS property to change the border of an element to Yxy 46.4780, 0.3497, 0.3255 is called "border". The border property can be set on classes, ids or directly on the HTML element.

This example shows the color as border, it can be applied via the CSS property "border" or "border-color".

```
.border, #border, table{ border:4px solid rgb(214, 171, 174) }
```

If only the border color should be changed use the property `border-color`.

```
.border{ border-color:rgb(214, 171, 174) }
```

If you want to add a box shadow in that color use:

Here you see how a box with a 4 pixel `rgb(214, 171, 174)` colored shadow looks like.

```
.boxshadow{ -moz-box-shadow:4px 4px 4px  
4px rgb(214, 171, 174); -webkit-box-  
shadow:4px 4px 4px 4px rgb(214, 171, 174);  
box-shadow:4px 4px 4px 4px rgb(214, 171,  
174) }
```


Background

The CSS property to change the background color of an element to Yxy 46.4780, 0.3497, 0.3255 is called "background". The background property can be set on classes, ids or directly on the HTML element.

```
.background, #background, body{  
background: rgb(214, 171, 174) }
```

If only the background color should be changed can be used:

```
.background{ background-color: rgb(214,  
171, 174) }
```

This example shows the color as background, it is applied via the CSS property "background".

To optimize and compress your CSS code, you can use our [online CSS compressor and optimizer](#) based on csstidy. If you want to create a linear or radial gradient as background or border, check our [CSS Gradient Generator](#).

Hey! You found this booklet interesting? Support Converting Colors with the new Membership Option!

The pro membership hides all ads, plus gives you double the colors in the color bucket, and more awesome pro features!

[Learn more, Memberships starting at \\$2.50/m!](#)

**Follow me
on Twitter!**

@ConvertingColor