

Converting Colors

$Yxy(46.7039, 0.3424, 0.3287)$

Have a look what the booklet for
Yxy(46.7039, 0.3424, 0.3287)
contains.

Yxy(46.5935, 0.3426, 0.3291)	3
Conversions	4
Details	6
Harmonies	12
Previews	24
Color Blindness Simulation	27
CSS Examples	30

Color

Yxy(46.5935, 0.3426, 0.3291)

Conversions

Conversions Part 1

Format	Color
Hex	CFAEAE
RGB	207, 174, 174
RGB Percent	81%, 68%, 68%
CMY	0.1883, 0.3176, 0.3177
CMYK	0.00, 0.16, 0.16, 0.19
HSL	0°, 26%, 75%
HSV	0°, 16%, 81%
XYZ	48.5048, 46.5935, 46.4802
YIQ	183.8670, 19.6680, 6.9960

Conversions

Conversions Part 2

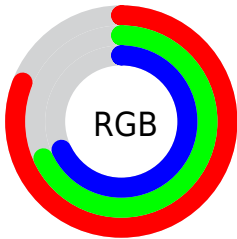
Format	Color
R _{YB}	207, 174, 174
Decimal	13610670
CIE Lab	73.93, 11.94, 4.46
CIE LCh	74, 12.744, 20.480
Yxy	46.5935, 0.3426, 0.3291
Android (android.graphics.Color)	4291800750 (0xFFCFAEAE)
YUV	183.8670, -4.8644, 20.2876
Hunter-Lab	68.2594, 7.3872, 7.4090

Details

The Yxy color **46.5935, 0.3426, 0.3291** is a light color, and the websafe version is hex **CC9999**. A complement of this color would be **58.1156, 0.2888, 0.3289**, and the grayscale version is **47.8751, 0.3127, 0.3290**.

A 20% lighter version of the original color is **83.5108, 0.3307, 0.3300**, and **21.9996, 0.3504, 0.3291** is the 20% darker color. If you saturate the color by 10%, you get **38.4605, 0.3676, 0.3292**, and if you desaturate by 10%, it is **56.0866, 0.3226, 0.3290**.

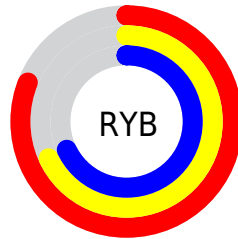
Distribution



Red (81%)

Green (68%)

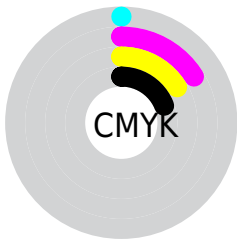
Blue (68%)



Red (81%)

Yellow (68%)

Blue (68%)

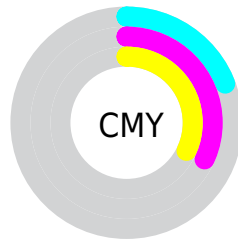


Cyan (0%)

Magenta (16%)

Yellow (16%)

Black (19%)



Cyan (19%)


Magenta (32%)


Yellow (32%)

Brightness & Saturation Gradients


These gradients show how the Yxy color 46.5935, 0.3426, 0.3291 changes by changing the brightness by 10 percent. The first figure shows a shift by +10% for each color and the second figure -10%.


Similar to the brightness gradients but the following saturation gradients show a change of the Yxy color 46.5935, 0.3426, 0.3291 by changing the saturation by 10% instead.


 46.5935, 0.3426,
0.3291

 46.5935, 0.3426,
0.3291


373.1896, 0.3276,
0.3292

 32.7144, 0.3464,
0.3290


 85.1065, 0.3371,
0.3292

 21.9078, 0.3513,
0.3289


110.5093, 0.3351,
0.3292

 13.7891, 0.3578,
0.3287

140.5220, 0.3333,
0.3292

 7.9742, 0.3669,
0.3283

175.5291, 0.3319,
0.3292

 4.0784, 0.3807,
0.3276

215.9151, 0.3306,
0.3292

 1.7175, 0.4038,
0.3258

262.0642, 0.3294,

 0.4350, 0.5415,

0.3292

0.3342

314.3609, 0.3285,
0.3292

0.0000, 0.0000,
0.0000

46.5935, 0.3426,
0.3291

46.5935, 0.3426,
0.3291

38.4605, 0.3676,
0.3292

56.0866, 0.3226,
0.3290

31.6194, 0.3986,
0.3293

66.9913, 0.3067,
0.3290

26.0056, 0.4362,
0.3294

79.3643, 0.2939,
0.3289

21.5466, 0.4801,
0.3295

92.0033, 0.2844,
0.3289

18.1621, 0.5278,
0.3297

■ 15.7616, 0.5741,
0.3298

■ 14.2398, 0.6115,
0.3299

■ 13.4659, 0.6338,
0.3300

■ 13.2649, 0.6401,
0.3300

Harmonies

Analogous

The Analogous color harmony consists of three colors that are next to each other on the color wheel.



46.5935, 0.3289, 0.3145



46.5935, 0.3426, 0.3291



46.5935, 0.3480, 0.3441

Triad

The Triadic color harmony groups three colors that are evenly spaced from another and form a triangle on the color wheel.



46.5935, 0.3426, 0.3291



46.5935, 0.3135, 0.3563



46.5935, 0.2824, 0.3021

Complementary

The Complementary color scheme is a pair of colors which are on the opposite of each other on the color wheel.



46.5935, 0.3426, 0.3291



58.1156, 0.2888, 0.3289

Split Complementary

Split-complementary colors differ from the complementary color scheme. The scheme consists of three colors, the original color and two neighbors of the complement color.



46.5935, 0.2786, 0.3124



46.5935, 0.3426, 0.3291



46.5935, 0.2963, 0.3441

Square

The Square scheme is like the rectangle color scheme, but the four colors are evenly spaced on the color wheel.



46.5935, 0.3426, 0.3291



46.5935, 0.3309, 0.3605



46.5935, 0.2836, 0.3278



46.5935, 0.2942, 0.2991

Rectangle

The Rectangle color scheme consists of four colors that form a rectangle on the color wheel.



46.5935, 0.3426, 0.3291



46.5935, 0.3462, 0.3525



46.5935, 0.2836, 0.3278



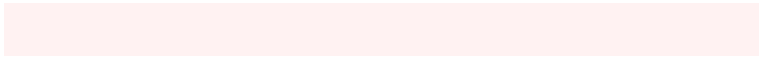
46.5935, 0.2802, 0.3047

Sweetspot

The Sweet Spot groups the original color and five complimentary colors.



46.5956, 0.3426, 0.3291



91.3418, 0.3211, 0.3290



48.0393, 0.3146, 0.2899



19.3005, 0.3223, 0.3290



0.0000, 0.0000, 0.0000



21.4041, 0.3127, 0.3290

Same Dimension

The Same Dimension uses a secret algorithm to generate beautiful new colors.



46.5956, 0.3426, 0.3291



70.1594, 0.3502, 0.3291



53.3597, 0.3395, 0.3491



11.8089, 0.3291, 0.3291



8.3591, 0.6400, 0.3300



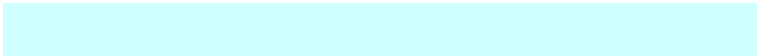
0.4676, 0.6399, 0.3301

Inverse Universe

The Inverse Universe completely reimagines the original color for something new.



58.1156, 0.2888, 0.3289



91.9295, 0.2841, 0.3289



50.5433, 0.2879, 0.3081



13.4064, 0.2983, 0.3290



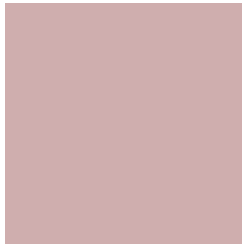
30.9320, 0.2246, 0.3286



1.7298, 0.2246, 0.3287

Previews

White Background



This preview shows how the Yxy color 46.5935, 0.3426, 0.3291 looks on a white background.

Color Contrast Check

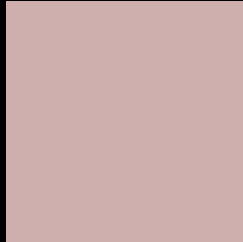
Large Text (above 18pt) WCAG AA × Fail

Any Text WCAG AA × Fail

Large Text (above 18pt) WCAG AAA × Fail

Any Text WCAG AAA × Fail

Black Background



This preview shows how the Yxy color 46.5935, 0.3426, 0.3291 looks on a black background.

Color Contrast Check

Large Text (above 18pt) WCAG AA ✓ Pass

Any Text WCAG AA ✓ Pass

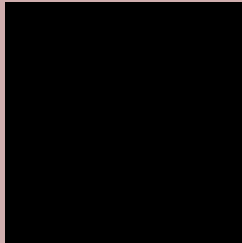
Large Text (above 18pt) WCAG AAA ✓ Pass

Any Text WCAG AAA ✓ Pass

If you want to check with other color combinations, try the [Color Contrast Checker](#).

Yxy 46.5935, 0.3426, 0.3291

Background



This preview shows how black text looks on a background with the Yxy color 46.5935, 0.3426, 0.3291.



This preview shows how white text looks on a background with the Yxy color 46.5935, 0.3426, 0.3291.

Color Blindness Simulation

Color vision deficiency is a very complex topic, and I could not describe the different causes any better than Wikipedia does, so if you want to learn more, you should check out their [article about color blindness](#).

Dichromacy



Original Color

46.5935, 0.3426, 0.3291

Protanopia

46.7012, 0.3194, 0.3329

Deuteranopia

46.8032, 0.3386, 0.3316



Tritanopia

46.4601, 0.3333, 0.3120

Trichromacy



Original Color

46.5935, 0.3426, 0.3291

Protanomaly

46.4844, 0.3276, 0.3303

Deuteranomaly

46.5533, 0.3397, 0.3303

Tritanomaly

46.6744, 0.3367, 0.3181

Monochromacy



Original Color

46.5935, 0.3426, 0.3291

Achromatopsia

47.9320, 0.3127, 0.3290

Achromatomaly

47.1443, 0.3231, 0.3290

CSS Examples

Text

The CSS property to change the color of the text to Yxy 46.5935, 0.3426, 0.3291 is called "color". The color property can be set on classes, ids or directly on the HTML element.

This example shows how text in the color `rgb(207, 174, 174)` looks like.

```
.text, #text, p{  
    color:rgb(207, 174, 174)  
}
```

If you want to add a text shadow in that color use the text-shadow property, you can generate a text shadow directly with our [CSS Text Shadow Generator](#).

Here you see how black text with a 4 pixel rgb(207, 174, 174) colored shadow looks like.

```
.shadow{ text-shadow: 4px 4px 2px rgb(207, 174, 174) }
```

Border

The CSS property to change the border of an element to Yxy 46.5935, 0.3426, 0.3291 is called "border". The border property can be set on classes, ids or directly on the HTML element.

This example shows the color as border, it can be applied via the CSS property "border" or "border-color".

```
.border, #border, table{ border:4px solid rgb(207, 174, 174) }
```

If only the border color should be changed use the property `border-color`.

```
.border{ border-color:rgb(207, 174, 174) }
```

If you want to add a box shadow in that color use:

Here you see how a box with a 4 pixel `rgb(207, 174, 174)` colored shadow looks like.

```
.boxshadow{ -moz-box-shadow:4px 4px 4px  
4px rgb(207, 174, 174); -webkit-box-  
shadow:4px 4px 4px 4px rgb(207, 174, 174);  
box-shadow:4px 4px 4px 4px rgb(207, 174,  
174) }
```


Background

The CSS property to change the background color of an element to Yxy 46.5935, 0.3426, 0.3291 is called "background". The background property can be set on classes, ids or directly on the HTML element.

```
.background, #background, body{  
background: rgb(207, 174, 174) }
```

If only the background color should be changed can be used:

```
.background{ background-color: rgb(207,  
174, 174) }
```

This example shows the color as background, it is applied via the CSS property "background".

To optimize and compress your CSS code, you can use our [online CSS compressor and optimizer](#) based on csstidy. If you want to create a linear or radial gradient as background or border, check our [CSS Gradient Generator](#).

Hey! You found this booklet interesting? Support Converting Colors with the new Membership Option!

The pro membership hides all ads, plus gives you double the colors in the color bucket, and more awesome pro features!

[Learn more, Memberships starting at \\$2.50/m!](#)

**Follow me
on Twitter!**

@ConvertingColor