

Converting Colors

Yxy(46.7184, 0.3469, 0.3547)

Have a look what the booklet for
Yxy(46.7184, 0.3469, 0.3547)
contains.

Yxy(46.7492, 0.3464, 0.3546)	3
<i>Conversions</i>	4
<i>Details</i>	6
<i>Harmonies</i>	12
<i>Previews</i>	24
<i>Color Blindness Simulation</i>	27
<i>CSS Examples</i>	30

Color

Yxy(46.7492, 0.3464, 0.3546)

Conversions

Conversions Part 1

Format	Color
Hex	C6B39F
RGB	198, 179, 159
RGB Percent	78%, 70%, 62%
CMY	0.2235, 0.2980, 0.3765
CMYK	0.00, 0.10, 0.20, 0.22
HSL	31°, 25%, 70%
HSV	31°, 20%, 78%
XYZ	45.6681, 46.7492, 39.4191
YIQ	182.4010, 17.7440, -2.1920

Conversions

Conversions Part 2

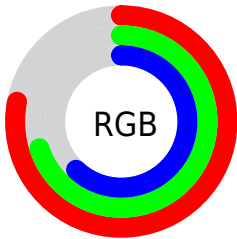
Format	Color
RYB	196, 198, 159
Decimal	13022111
CIELab	74.03, 3.56, 12.68
CIElCh	74, 13.170, 74.314
Yxy	46.7492, 0.3464, 0.3546
Android (android.graphics.Color)	4291212191 (0xFFC6B39F)
YUV	182.4010, -11.5367, 13.6803
Hunter-Lab	68.3734, -0.4292, 13.6791

Details

The Yxy color **46.7492, 0.3464, 0.3546** is a light color, and the websafe version is hex **CCCCCC**. A complement of this color would be **43.2930, 0.2819, 0.3020**, and the grayscale version is **47.0676, 0.3127, 0.3290**.

A 20% lighter version of the original color is **85.5317, 0.3400, 0.3500**, and **21.9337, 0.3559, 0.3603** is the 20% darker color. If you saturate the color by 10%, you get **42.3849, 0.3669, 0.3684**, and if you desaturate by 10%, it is **51.4985, 0.3282, 0.3413**.

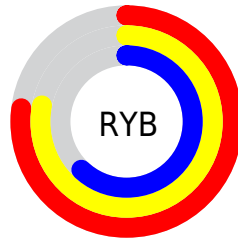
Distribution



Red (78%)

Green (70%)

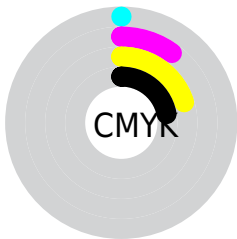
Blue (62%)



Red (77%)

Yellow (78%)

Blue (62%)

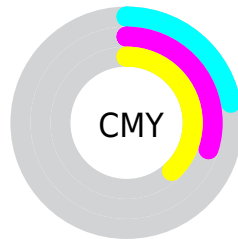


Cyan (0%)

Magenta (10%)

Yellow (20%)

Black (22%)



Cyan (22%)


Magenta (30%)

Yellow (38%)

Brightness & Saturation Gradients

These gradients show how the Yxy color 46.7492, 0.3464, 0.3546 changes by changing the brightness by 10 percent. The first figure shows a shift by +10% for each color and the second figure -10%.


Similar to the brightness gradients but the following saturation gradients show a change of the Yxy color 46.7492, 0.3464, 0.3546 by changing the saturation by 10% instead.


 46.7492, 0.3464,
0.3546


 46.7492, 0.3464,
0.3546


373.8125, 0.3295,
0.3420

 32.8374, 0.3506,
0.3577


 85.3391, 0.3403,
0.3500

 22.0019, 0.3561,
0.3617


 110.7861, 0.3379,
0.3483

 13.8583, 0.3633,
0.3668


140.8469, 0.3360,
0.3469

 8.0222, 0.3733,
0.3740

175.9060, 0.3343,
0.3456

 4.1092, 0.3883,
0.3842

216.3477, 0.3329,
0.3445

 1.7348, 0.4133,
0.4008

262.5564, 0.3316,

 0.4460, 0.5339,

0.3436

0.4661

314.9166, 0.3305,
0.3427

0.0000, 0.0000,
0.0000

46.7492, 0.3464,
0.3546

46.7492, 0.3464,
0.3546

42.3849, 0.3669,
0.3684

51.4985, 0.3282,
0.3413

38.3884, 0.3898,
0.3821

56.6366, 0.3123,
0.3286

34.7507, 0.4147,
0.3950

62.1754, 0.2983,
0.3168

31.4595, 0.4412,
0.4062

68.1243, 0.2861,
0.3059

28.5021, 0.4681,
0.4144

74.2971, 0.2772,
0.2990

■ 25.8641, 0.4940,
0.4185

■ 79.7311, 0.2780,
0.3096

■ 23.5299, 0.5172,
0.4174

■ 85.4656, 0.2788,
0.3200

■ 21.4754, 0.5370,
0.4115

■ 90.7466, 0.2794,
0.3289

■ 21.4168, 0.5376,
0.4113

Harmonies

Analogous

The Analogous color harmony consists of three colors that are next to each other on the color wheel.



46.7492, 0.3489, 0.3415



46.7492, 0.3464, 0.3546



46.7492, 0.3347, 0.3612

Triad

The Triadic color harmony groups three colors that are evenly spaced from another and form a triangle on the color wheel.



46.7492, 0.3464, 0.3546



46.7492, 0.2848, 0.3313



46.7492, 0.3072, 0.3013

Complementary

The Complementary color scheme is a pair of colors which are on the opposite of each other on the color wheel.



46.7492, 0.3464, 0.3546



43.2930, 0.2819, 0.3020

Split Complementary

Split-complementary colors differ from the complementary color scheme. The scheme consists of three colors, the original color and two neighbors of the complement color.



46.7492, 0.2905, 0.2981



46.7492, 0.3464, 0.3546



46.7492, 0.2779, 0.3148

Square

The Square scheme is like the rectangle color scheme, but the four colors are evenly spaced on the color wheel.



46.7492, 0.3464, 0.3546



46.7492, 0.2991, 0.3477



46.7492, 0.2799, 0.3028



46.7492, 0.3259, 0.3113

Rectangle

The Rectangle color scheme consists of four colors that form a rectangle on the color wheel.



46.7492, 0.3464, 0.3546



46.7492, 0.3235, 0.3607



46.7492, 0.2799, 0.3028



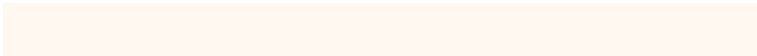
46.7492, 0.3012, 0.2994

Sweetspot

The Sweet Spot groups the original color and five complimentary colors.



46.7513, 0.3464, 0.3546



94.3889, 0.3222, 0.3366



40.0393, 0.3326, 0.3042



20.0757, 0.3233, 0.3375



0.0000, 0.0000, 0.0000



21.4041, 0.3127, 0.3290

Same Dimension

The Same Dimension uses a secret algorithm to generate beautiful new colors.



46.7513, 0.3464, 0.3546



79.0941, 0.3557, 0.3610



54.9008, 0.3421, 0.3775



11.5212, 0.3277, 0.3409



14.0989, 0.5356, 0.4129



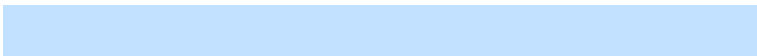
0.8123, 0.5051, 0.4372

Inverse Universe

The Inverse Universe completely reimagines the original color for something new.



43.2930, 0.2819, 0.3020



71.7699, 0.2743, 0.2947



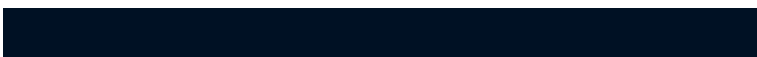
36.2470, 0.2803, 0.2754



11.1263, 0.2983, 0.3169



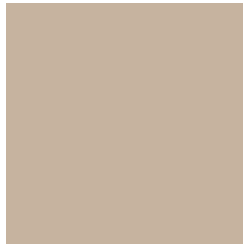
8.3186, 0.1764, 0.1551



0.5388, 0.1872, 0.1937

Previews

White Background



This preview shows how the Yxy color 46.7492, 0.3464, 0.3546 looks on a white background.

Color Contrast Check

Large Text (above 18pt) WCAG AA × Fail

Any Text WCAG AA × Fail

Large Text (above 18pt) WCAG AAA × Fail

Any Text WCAG AAA × Fail

Black Background



This preview shows how the Yxy color 46.7492, 0.3464, 0.3546 looks on a black background.

Color Contrast Check

Large Text (above 18pt) WCAG AA ✓ Pass

Any Text WCAG AA ✓ Pass

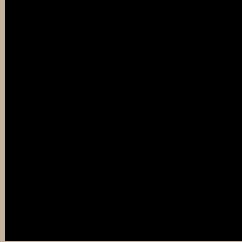
Large Text (above 18pt) WCAG AAA ✓ Pass

Any Text WCAG AAA ✓ Pass

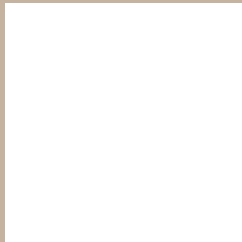
If you want to check with other color combinations, try the [Color Contrast Checker](#).

Yxy 46.7492, 0.3464, 0.3546

Background



This preview shows how black text looks on a background with the Yxy color 46.7492, 0.3464, 0.3546.



This preview shows how white text looks on a background with the Yxy color 46.7492, 0.3464, 0.3546.

Color Blindness Simulation

Color vision deficiency is a very complex topic, and I could not describe the different causes any better than Wikipedia does, so if you want to learn more, you should check out their [article about color blindness](#).

Dichromacy



Original Color

46.7492, 0.3464, 0.3546

Protanopia

46.9411, 0.3376, 0.3577

Deuteranopia

46.6079, 0.3558, 0.3477



Tritanopia

46.8473, 0.3258, 0.3130

Trichromacy



Original Color

46.7492, 0.3464, 0.3546

Protanomaly

46.9233, 0.3405, 0.3562

Deuteranomaly

46.4261, 0.3518, 0.3492

Tritanomaly

46.6425, 0.3342, 0.3278

Monochromacy



Original Color

46.7492, 0.3464, 0.3546

Achromatopsia

46.7784, 0.3127, 0.3290

Achromatomaly

46.7951, 0.3244, 0.3381

CSS Examples

Text

The CSS property to change the color of the text to Yxy 46.7492, 0.3464, 0.3546 is called "color". The color property can be set on classes, ids or directly on the HTML element.

This example shows how text in the color `rgb(198, 179, 159)` looks like.

```
.text, #text, p{  
    color:rgb(198, 179, 159)  
}
```

If you want to add a text shadow in that color use the text-shadow property, you can generate a text shadow directly with our [CSS Text Shadow Generator](#).

Here you see how black text with a 4 pixel rgb(198, 179, 159) colored shadow looks like.

```
.shadow{ text-shadow: 4px 4px 2px rgb(198, 179, 159) }
```

Border

The CSS property to change the border of an element to Yxy 46.7492, 0.3464, 0.3546 is called "border". The border property can be set on classes, ids or directly on the HTML element.

This example shows the color as border, it can be applied via the CSS property "border" or "border-color".

```
.border, #border, table{ border:4px solid rgb(198, 179, 159) }
```

If only the border color should be changed use the property `border-color`.

```
.border{ border-color:rgb(198, 179, 159) }
```

If you want to add a box shadow in that color use:

Here you see how a box with a 4 pixel `rgb(198, 179, 159)` colored shadow looks like.

```
.boxshadow{ -moz-box-shadow:4px 4px 4px  
4px rgb(198, 179, 159); -webkit-box-  
shadow:4px 4px 4px 4px rgb(198, 179, 159);  
box-shadow:4px 4px 4px 4px rgb(198, 179,  
159) }
```


Background

The CSS property to change the background color of an element to Yxy 46.7492, 0.3464, 0.3546 is called "background". The background property can be set on classes, ids or directly on the HTML element.

```
.background, #background, body{  
background: rgb(198, 179, 159) }
```

If only the background color should be changed can be used:

```
.background{ background-color: rgb(198,  
179, 159) }
```

This example shows the color as background, it is applied via the CSS property "background".

To optimize and compress your CSS code, you can use our [online CSS compressor and optimizer](#) based on csstidy. If you want to create a linear or radial gradient as background or border, check our [CSS Gradient Generator](#).

Hey! You found this booklet interesting? Support Converting Colors with the new Membership Option!

The pro membership hides all ads, plus gives you double the colors in the color bucket, and more awesome pro features!

[Learn more, Memberships starting at \\$2.50/m!](#)

**Follow me
on Twitter!**

@ConvertingColor