

Converting Colors

$Yxy(46.8192, 0.3447, 0.3520)$

Have a look what the booklet for
Yxy(46.8192, 0.3447, 0.3520)
contains.

Yxy(46.8192, 0.3447, 0.3520)	3
Conversions	4
Details	6
Harmonies	12
Previews	24
Color Blindness Simulation	27
CSS Examples	30

Color

Yxy(46.8192, 0.3447, 0.3520)

Conversions

Conversions Part 1

Format	Color
Hex	C6B3A1
RGB	198, 179, 161
RGB Percent	78%, 70%, 63%
CMY	0.2234, 0.2981, 0.3686
CMYK	0.00, 0.10, 0.19, 0.22
HSL	29°, 25%, 70%
HSV	29°, 19%, 78%
XYZ	45.8482, 46.8192, 40.3417
YIQ	182.6290, 17.1020, -1.5700

Conversions

Conversions Part 2

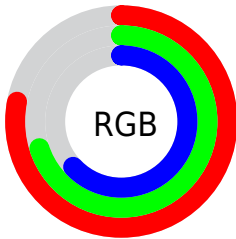
Format	Color
RYB	198, 196, 161
Decimal	13022113
CIELab	74.07, 3.88, 11.65
CIElCh	74, 12.283, 71.579
Yxy	46.8192, 0.3447, 0.3520
Android (android.graphics.Color)	4291212193 (0xFFC6B3A1)
YUV	182.6290, -10.6631, 13.4804
Hunter-Lab	68.4246, -0.1381, 12.9411

Details

The Yxy color **46.8192, 0.3447, 0.3520** is a light color, and the websafe version is hex **CCCCCC**. A complement of this color would be **44.3170, 0.2836, 0.3049**, and the grayscale version is **47.1956, 0.3127, 0.3290**.

A 20% lighter version of the original color is **85.6345, 0.3387, 0.3480**, and **21.9551, 0.3547, 0.3585** is the 20% darker color. If you saturate the color by 10%, you get **42.2451, 0.3653, 0.3651**, and if you desaturate by 10%, it is **51.8096, 0.3266, 0.3394**.

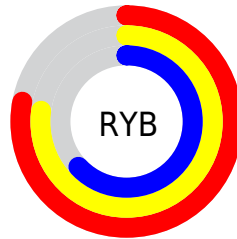
Distribution



Red (78%)

Green (70%)

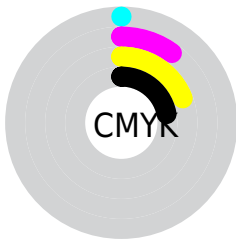
Blue (63%)



Red (78%)

Yellow (77%)

Blue (63%)

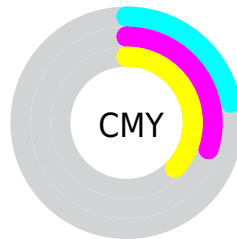


Cyan (0%)

Magenta (10%)

Yellow (19%)

Black (22%)



Cyan (22%)


Magenta (30%)


Yellow (37%)

Brightness & Saturation Gradients


These gradients show how the Yxy color 46.8192, 0.3447, 0.3520 changes by changing the brightness by 10 percent. The first figure shows a shift by +10% for each color and the second figure -10%.


Similar to the brightness gradients but the following saturation gradients show a change of the Yxy color 46.8192, 0.3447, 0.3520 by changing the saturation by 10% instead.


 46.8192, 0.3447,
0.3520


 46.8192, 0.3447,
0.3520


374.0924, 0.3287,
0.3406

 32.8927, 0.3487,
0.3548


 85.4437, 0.3389,
0.3479

 22.0443, 0.3539,
0.3583


 110.9105, 0.3367,
0.3464

 13.8895, 0.3608,
0.3630


140.9929, 0.3348,
0.3451

 8.0438, 0.3703,
0.3694

176.0753, 0.3332,
0.3439

 4.1230, 0.3846,
0.3786

216.5420, 0.3319,
0.3429

 1.7426, 0.4081,
0.3930

262.7775, 0.3307,

 0.4510, 0.5372,

0.3421

0.4628

315.1662, 0.3296,
0.3413

0.0000, 0.0000,
0.0000

46.8192, 0.3447,
0.3520

46.8192, 0.3447,
0.3520

42.2451, 0.3653,
0.3651

51.8096, 0.3266,
0.3394

38.0692, 0.3884,
0.3781

57.2212, 0.3108,
0.3275

34.2816, 0.4139,
0.3905

63.0665, 0.2970,
0.3164

30.8689, 0.4412,
0.4013

69.3560, 0.2851,
0.3062

27.8174, 0.4693,
0.4093

75.7716, 0.2774,
0.3019

■ 25.1117, 0.4968,
0.4133

■ 81.6026, 0.2783,
0.3130

■ 22.7349, 0.5217,
0.4121

■ 87.7700, 0.2791,
0.3239

■ 20.6641, 0.5429,
0.4059

■ 90.7500, 0.2795,
0.3289

■ 20.4134, 0.5456,
0.4050

Harmonies

Analogous

The Analogous color harmony consists of three colors that are next to each other on the color wheel.



46.8192, 0.3461, 0.3395



46.8192, 0.3447, 0.3520



46.8192, 0.3345, 0.3588

Triad

The Triadic color harmony groups three colors that are evenly spaced from another and form a triangle on the color wheel.



46.8192, 0.3447, 0.3520



46.8192, 0.2877, 0.3326



46.8192, 0.3061, 0.3025

Complementary

The Complementary color scheme is a pair of colors which are on the opposite of each other on the color wheel.



46.8192, 0.3447, 0.3520



44.3170, 0.2836, 0.3049

Split Complementary

Split-complementary colors differ from the complementary color scheme. The scheme consists of three colors, the original color and two neighbors of the complement color.



46.8192, 0.2908, 0.3002



46.8192, 0.3447, 0.3520



46.8192, 0.2805, 0.3171

Square

The Square scheme is like the rectangle color scheme, but the four colors are evenly spaced on the color wheel.



46.8192, 0.3447, 0.3520



46.8192, 0.3015, 0.3476



46.8192, 0.2816, 0.3053



46.8192, 0.3234, 0.3114

Rectangle

The Rectangle color scheme consists of four colors that form a rectangle on the color wheel.



46.8192, 0.3447, 0.3520



46.8192, 0.3243, 0.3588



46.8192, 0.2816, 0.3053



46.8192, 0.3005, 0.3010

Sweetspot

The Sweet Spot groups the original color and five complimentary colors.



46.8213, 0.3447, 0.3520



94.1363, 0.3223, 0.3362



40.8032, 0.3308, 0.3047



20.0161, 0.3233, 0.3370



0.0000, 0.0000, 0.0000



21.4041, 0.3127, 0.3290

Same Dimension

The Same Dimension uses a secret algorithm to generate beautiful new colors.



46.8213, 0.3447, 0.3520



79.8555, 0.3519, 0.3567



54.7042, 0.3407, 0.3743



11.4732, 0.3278, 0.3402



13.4408, 0.5435, 0.4067



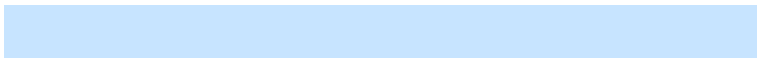
0.7813, 0.5109, 0.4325

Inverse Universe

The Inverse Universe completely reimagines the original color for something new.



44.3170, 0.2836, 0.3049



74.6955, 0.2778, 0.2996



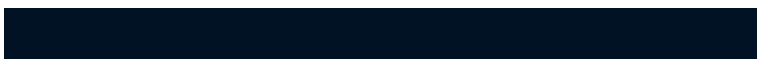
37.3652, 0.2822, 0.2793



11.1743, 0.2983, 0.3175



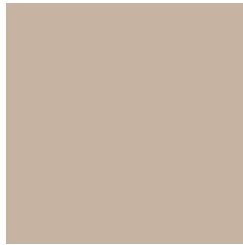
8.9790, 0.1789, 0.1641



0.5698, 0.1892, 0.2012

Previews

White Background



This preview shows how the Yxy color 46.8192, 0.3447, 0.3520 looks on a white background.

Color Contrast Check

Large Text (above 18pt) WCAG AA × Fail

Any Text WCAG AA × Fail

Large Text (above 18pt) WCAG AAA × Fail

Any Text WCAG AAA × Fail

Black Background



This preview shows how the Yxy color 46.8192, 0.3447, 0.3520 looks on a black background.

Color Contrast Check

Large Text (above 18pt) WCAG AA ✓ Pass

Any Text WCAG AA ✓ Pass

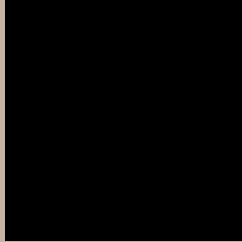
Large Text (above 18pt) WCAG AAA ✓ Pass

Any Text WCAG AAA ✓ Pass

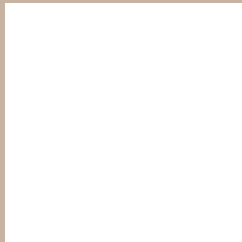
If you want to check with other color combinations, try the [Color Contrast Checker](#).

Yxy 46.8192, 0.3447, 0.3520

Background



This preview shows how black text looks on a background with the Yxy color 46.8192, 0.3447, 0.3520.



This preview shows how white text looks on a background with the Yxy color 46.8192, 0.3447, 0.3520.

Color Blindness Simulation

Color vision deficiency is a very complex topic, and I could not describe the different causes any better than Wikipedia does, so if you want to learn more, you should check out their [article about color blindness](#).

Dichromacy



Original Color

46.8192, 0.3447, 0.3520

Protanopia

47.0117, 0.3360, 0.3551

Deuteranopia

46.9247, 0.3528, 0.3465



Tritanopia

46.8906, 0.3250, 0.3118

Trichromacy



Original Color

46.8192, 0.3447, 0.3520

Protanomaly

46.9938, 0.3389, 0.3536

Deuteranomaly

46.8903, 0.3498, 0.3479

Tritanomaly

46.7228, 0.3325, 0.3253

Monochromacy



Original Color

46.8192, 0.3447, 0.3520

Achromatopsia

47.3531, 0.3127, 0.3290

Achromatomaly

47.2424, 0.3235, 0.3381

CSS Examples

Text

The CSS property to change the color of the text to Yxy 46.8192, 0.3447, 0.3520 is called "color". The color property can be set on classes, ids or directly on the HTML element.

This example shows how text in the color `rgb(198, 179, 161)` looks like.

```
.text, #text, p{  
    color:rgb(198, 179, 161)  
}
```

If you want to add a text shadow in that color use the text-shadow property, you can generate a text shadow directly with our [CSS Text Shadow Generator](#).

Here you see how black text with a 4 pixel rgb(198, 179, 161) colored shadow looks like.

```
.shadow{ text-shadow: 4px 4px 2px rgb(198, 179, 161) }
```

Border

The CSS property to change the border of an element to Yxy 46.8192, 0.3447, 0.3520 is called "border". The border property can be set on classes, ids or directly on the HTML element.

This example shows the color as border, it can be applied via the CSS property "border" or "border-color".

```
.border, #border, table{ border:4px solid rgb(198, 179, 161) }
```

If only the border color should be changed use the property `border-color`.

```
.border{ border-color:rgb(198, 179, 161) }
```

If you want to add a box shadow in that color use:

Here you see how a box with a 4 pixel `rgb(198, 179, 161)` colored shadow looks like.

```
.boxshadow{ -moz-box-shadow:4px 4px 4px  
4px rgb(198, 179, 161); -webkit-box-  
shadow:4px 4px 4px 4px rgb(198, 179, 161);  
box-shadow:4px 4px 4px 4px rgb(198, 179,  
161) }
```


Background

The CSS property to change the background color of an element to Yxy 46.8192, 0.3447, 0.3520 is called "background". The background property can be set on classes, ids or directly on the HTML element.

```
.background, #background, body{  
background: rgb(198, 179, 161) }
```

If only the background color should be changed can be used:

```
.background{ background-color: rgb(198,  
179, 161) }
```

This example shows the color as background, it is applied via the CSS property "background".

To optimize and compress your CSS code, you can use our [online CSS compressor and optimizer](#) based on csstidy. If you want to create a linear or radial gradient as background or border, check our [CSS Gradient Generator](#).

Hey! You found this booklet interesting? Support Converting Colors with the new Membership Option!

The pro membership hides all ads, plus gives you double the colors in the color bucket, and more awesome pro features!

[Learn more, Memberships starting at \\$2.50/m!](#)

**Follow me
on Twitter!**

@ConvertingColor