

Converting Colors

$Yxy(46.8269, 0.3415, 0.3223)$

Have a look what the booklet for
Yxy(46.8269, 0.3415, 0.3223)
contains.

Yxy(46.8435, 0.3411, 0.3218)	3
<i>Conversions</i>	4
<i>Details</i>	6
<i>Harmonies</i>	12
<i>Previews</i>	24
<i>Color Blindness Simulation</i>	27
<i>CSS Examples</i>	30

Color

Yxy(46.8435, 0.3411, 0.3218)

Conversions

Conversions Part 1

Format	Color
Hex	D2ADB3
RGB	210, 173, 179
RGB Percent	82%, 68%, 70%
CMY	0.1766, 0.3215, 0.2980
CMYK	0.00, 0.18, 0.15, 0.18
HSL	350°, 29%, 75%
HSV	350°, 18%, 82%
XYZ	49.6529, 46.8435, 49.0707
YIQ	184.7470, 20.1260, 9.7100

Conversions

Conversions Part 2

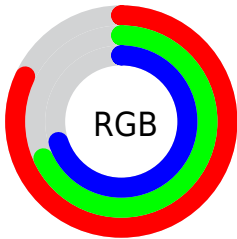
Format	Color
RYB	210, 173, 179
Decimal	13807027
CIELab	74.09, 14.37, 1.99
CIELCh	74, 14.511, 7.876
Yxy	46.8435, 0.3411, 0.3218
Android (android.graphics.Color)	4291997107 (0xFFD2ADB3)
YUV	184.7470, -2.8333, 22.1469
Hunter-Lab	68.4423, 9.7226, 5.4008

Details

The Yxy color $46.8435, 0.3411, 0.3218$ is a light color, and the websafe version is hex $CC9999$. A complement of this color would be $59.3262, 0.2901, 0.3364$, and the grayscale version is $48.3755, 0.3127, 0.3290$.

A 20% lighter version of the original color is $83.2968, 0.3268, 0.3231$, and $22.1497, 0.3495, 0.3209$ is the 20% darker color. If you saturate the color by 10%, you get $38.7476, 0.3627, 0.3174$, and if you desaturate by 10%, it is $56.3000, 0.3237, 0.3260$.

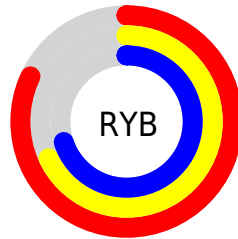
Distribution



Red (82%)

Green (68%)

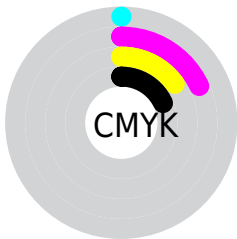
Blue (70%)



Red (82%)

Yellow (68%)

Blue (70%)

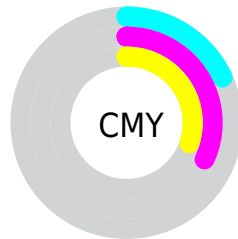


Cyan (0%)

Magenta (18%)

Yellow (15%)

Black (18%)



Cyan (18%)


Magenta (32%)

Yellow (30%)

Brightness & Saturation Gradients


These gradients show how the Yxy color 46.8435, 0.3411, 0.3218 changes by changing the brightness by 10 percent. The first figure shows a shift by +10% for each color and the second figure -10%.


Similar to the brightness gradients but the following saturation gradients show a change of the Yxy color 46.8435, 0.3411, 0.3218 by changing the saturation by 10% instead.


 46.8435, 0.3411,
0.3218

 46.8435, 0.3411,
0.3218


374.1895, 0.3269,
0.3255

 32.9120, 0.3447,
0.3209


 85.4800, 0.3359,
0.3232

 22.0590, 0.3493,
0.3196


110.9537, 0.3340,
0.3237

 13.9003, 0.3554,
0.3180

141.0436, 0.3323,
0.3241

 8.0513, 0.3640,
0.3156

176.1340, 0.3309,
0.3245

 4.1278, 0.3768,
0.3120

216.6095, 0.3297,
0.3248

 1.7453, 0.3983,
0.3057

262.8543, 0.3286,

 0.4527, 0.4920,

0.3250

0.2851

315.2528, 0.3277,
0.3253

0.0000, 0.0000,
0.0000

46.8435, 0.3411,
0.3218

46.8435, 0.3411,
0.3218

38.7476, 0.3627,
0.3174

56.3000, 0.3237,
0.3260

31.9436, 0.3892,
0.3131

67.1692, 0.3096,
0.3299

26.3663, 0.4212,
0.3091

79.5080, 0.2983,
0.3335

21.9425, 0.4587,
0.3061

92.0821, 0.2890,
0.3347

18.5910, 0.5005,
0.3048

92.4380, 0.2860,
0.3289

■ 16.2199, 0.5434,
0.3060

■ 14.7219, 0.5824,
0.3101

■ 13.9486, 0.6125,
0.3167

■ 13.8134, 0.6184,
0.3180

Harmonies

Analogous

The Analogous color harmony consists of three colors that are next to each other on the color wheel.



46.8435, 0.3228, 0.3067



46.8435, 0.3411, 0.3218



46.8435, 0.3517, 0.3391

Triad

The Triadic color harmony groups three colors that are evenly spaced from another and form a triangle on the color wheel.



46.8435, 0.3411, 0.3218



46.8435, 0.3222, 0.3634



46.8435, 0.2754, 0.3023

Complementary

The Complementary color scheme is a pair of colors which are on the opposite of each other on the color wheel.



46.8435, 0.3411, 0.3218



59.3262, 0.2901, 0.3364

Split Complementary

Split-complementary colors differ from the complementary color scheme. The scheme consists of three colors, the original color and two neighbors of the complement color.



46.8435, 0.2753, 0.3169



46.8435, 0.3411, 0.3218



46.8435, 0.3018, 0.3530

Square

The Square scheme is like the rectangle color scheme, but the four colors are evenly spaced on the color wheel.



46.8435, 0.3411, 0.3218



46.8435, 0.3404, 0.3637



46.8435, 0.2848, 0.3356



46.8435, 0.2851, 0.2954

Rectangle

The Rectangle color scheme consists of four colors that form a rectangle on the color wheel.



46.8435, 0.3411, 0.3218



46.8435, 0.3527, 0.3498



46.8435, 0.2848, 0.3356



46.8435, 0.2742, 0.3064

Sweetspot

The Sweet Spot groups the original color and five complimentary colors.



46.8456, 0.3411, 0.3218



91.4639, 0.3198, 0.3270



47.3562, 0.3095, 0.2850



19.3300, 0.3209, 0.3267



0.0000, 0.0000, 0.0000



21.4041, 0.3127, 0.3290

Same Dimension

The Same Dimension uses a secret algorithm to generate beautiful new colors.



46.8456, 0.3411, 0.3218



67.9024, 0.3484, 0.3202



51.5541, 0.3439, 0.3440



11.8390, 0.3265, 0.3253



8.4381, 0.6155, 0.3164



0.4818, 0.5688, 0.2907

Inverse Universe

The Inverse Universe completely reimagines the original color for something new.



46.8456, 0.3411, 0.3218



67.9024, 0.3484, 0.3202



53.7686, 0.2856, 0.3135



11.8390, 0.3265, 0.3253



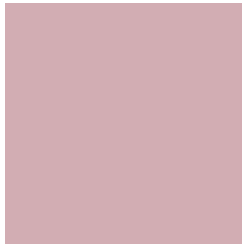
8.4381, 0.6155, 0.3164



0.4818, 0.5688, 0.2907

Previews

White Background



This preview shows how the Yxy color 46.8435, 0.3411, 0.3218 looks on a white background.

Color Contrast Check

Large Text (above 18pt) WCAG AA × Fail

Any Text WCAG AA × Fail

Large Text (above 18pt) WCAG AAA × Fail

Any Text WCAG AAA × Fail

Black Background



This preview shows how the Yxy color 46.8435, 0.3411, 0.3218 looks on a black background.

Color Contrast Check

Large Text (above 18pt) WCAG AA ✓ Pass

Any Text WCAG AA ✓ Pass

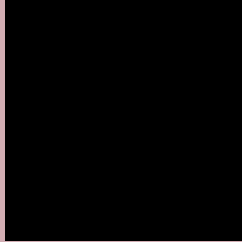
Large Text (above 18pt) WCAG AAA ✓ Pass

Any Text WCAG AAA ✓ Pass

If you want to check with other color combinations, try the [Color Contrast Checker](#).

Yxy 46.8435, 0.3411, 0.3218

Background



This preview shows how black text looks on a background with the Yxy color 46.8435, 0.3411, 0.3218.



This preview shows how white text looks on a background with the Yxy color 46.8435, 0.3411, 0.3218.

Color Blindness Simulation

Color vision deficiency is a very complex topic, and I could not describe the different causes any better than Wikipedia does, so if you want to learn more, you should check out their [article about color blindness](#).

Dichromacy



Original Color

46.8435, 0.3411, 0.3218

Protanopia

46.8227, 0.3138, 0.3251

Deuteranopia

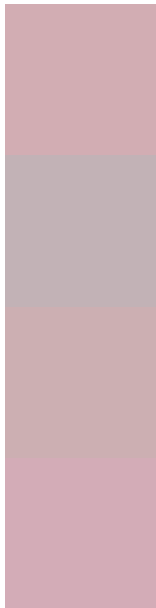
46.6825, 0.3333, 0.3266



Tritanopia

46.8567, 0.3369, 0.3134

Trichromacy



Original Color

46.8435, 0.3411, 0.3218

Protanomaly

46.6875, 0.3234, 0.3240

Deuteranomaly

46.7117, 0.3362, 0.3254

Tritanomaly

46.7728, 0.3387, 0.3158

Monochromacy



Original Color

46.8435, 0.3411, 0.3218

Achromatopsia

48.5150, 0.3127, 0.3290

Achromatomaly

47.9360, 0.3223, 0.3265

CSS Examples

Text

The CSS property to change the color of the text to Yxy 46.8435, 0.3411, 0.3218 is called "color". The color property can be set on classes, ids or directly on the HTML element.

This example shows how text in the color `rgb(210, 173, 179)` looks like.

```
.text, #text, p{  
    color:rgb(210, 173, 179)  
}
```

If you want to add a text shadow in that color use the text-shadow property, you can generate a text shadow directly with our [CSS Text Shadow Generator](#).

Here you see how black text with a 4 pixel rgb(210, 173, 179) colored shadow looks like.

```
.shadow{ text-shadow: 4px 4px 2px rgb(210, 173, 179) }
```

Border

The CSS property to change the border of an element to Yxy 46.8435, 0.3411, 0.3218 is called "border". The border property can be set on classes, ids or directly on the HTML element.

This example shows the color as border, it can be applied via the CSS property "border" or "border-color".

```
.border, #border, table{ border:4px solid rgb(210, 173, 179) }
```

If only the border color should be changed use the property `border-color`.

```
.border{ border-color:rgb(210, 173, 179) }
```

If you want to add a box shadow in that color use:

Here you see how a box with a 4 pixel `rgb(210, 173, 179)` colored shadow looks like.

```
.boxshadow{ -moz-box-shadow:4px 4px 4px  
4px rgb(210, 173, 179); -webkit-box-  
shadow:4px 4px 4px 4px rgb(210, 173, 179);  
box-shadow:4px 4px 4px 4px rgb(210, 173,  
179) }
```


Background

The CSS property to change the background color of an element to Yxy 46.8435, 0.3411, 0.3218 is called "background". The background property can be set on classes, ids or directly on the HTML element.

```
.background, #background, body{  
background: rgb(210, 173, 179) }
```

If only the background color should be changed can be used:

```
.background{ background-color: rgb(210,  
173, 179) }
```

This example shows the color as background, it is applied via the CSS property "background".

To optimize and compress your CSS code, you can use our [online CSS compressor and optimizer](#) based on csstidy. If you want to create a linear or radial gradient as background or border, check our [CSS Gradient Generator](#).

Hey! You found this booklet interesting? Support Converting Colors with the new Membership Option!

The pro membership hides all ads, plus gives you double the colors in the color bucket, and more awesome pro features!

[Learn more, Memberships starting at \\$2.50/m!](#)

**Follow me
on Twitter!**

@ConvertingColor